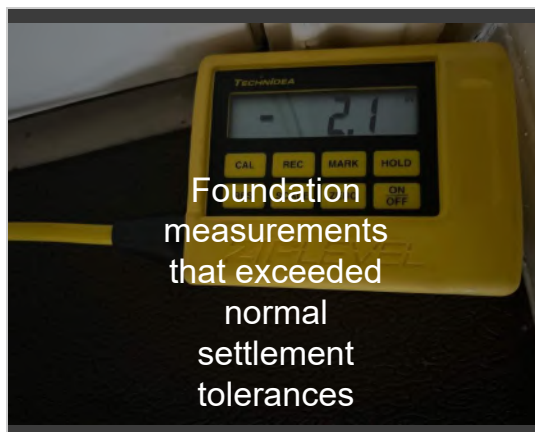
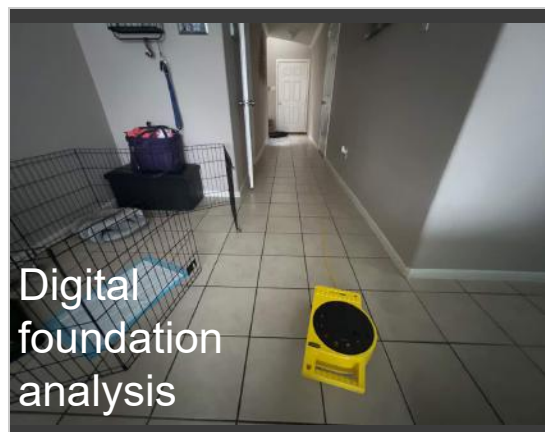
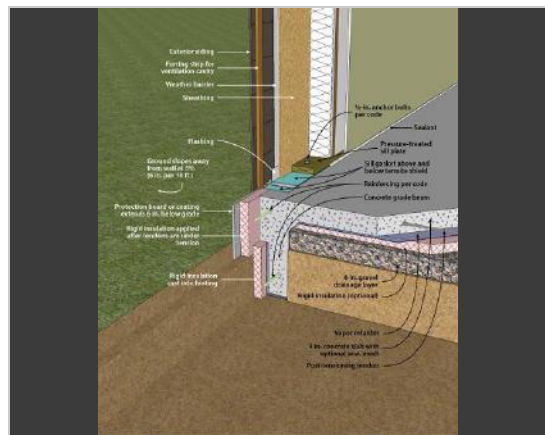


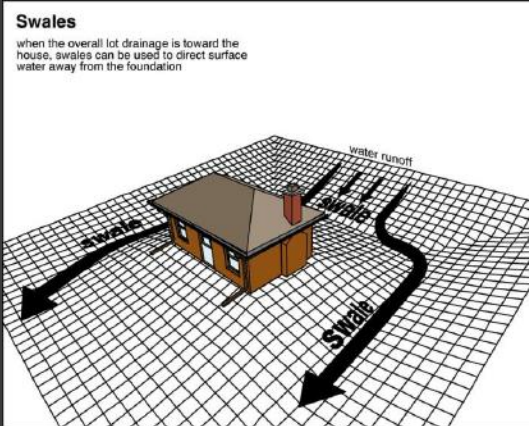
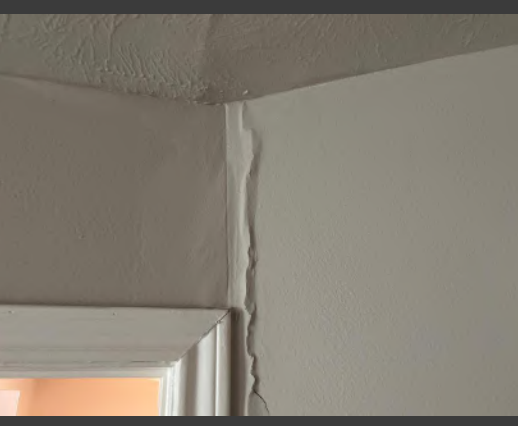


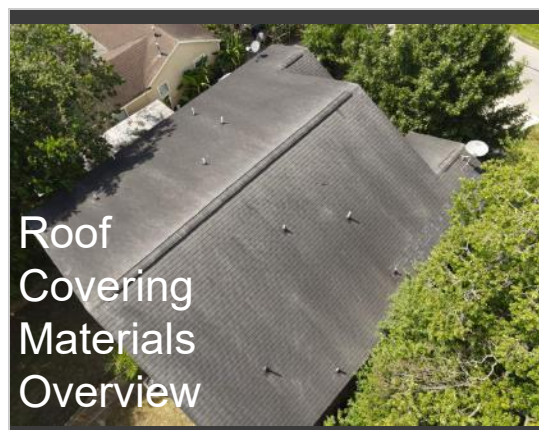
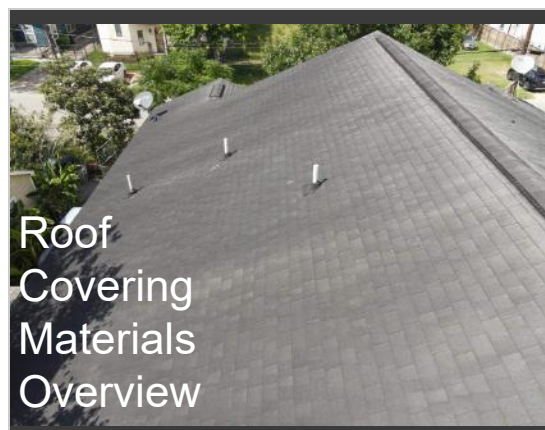
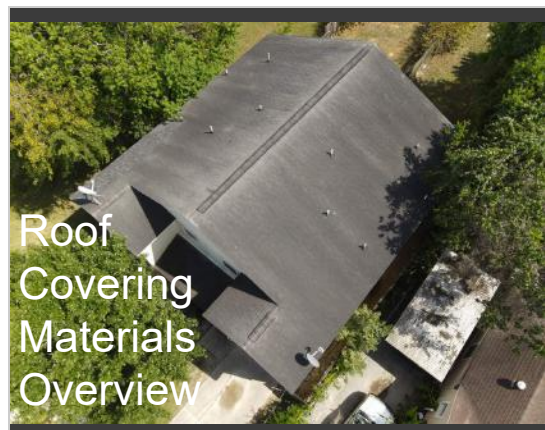
Select Categories

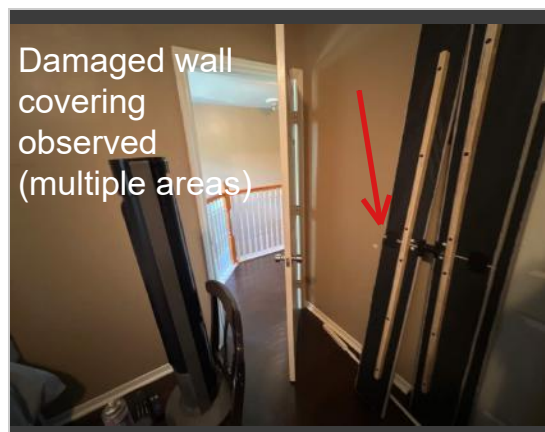
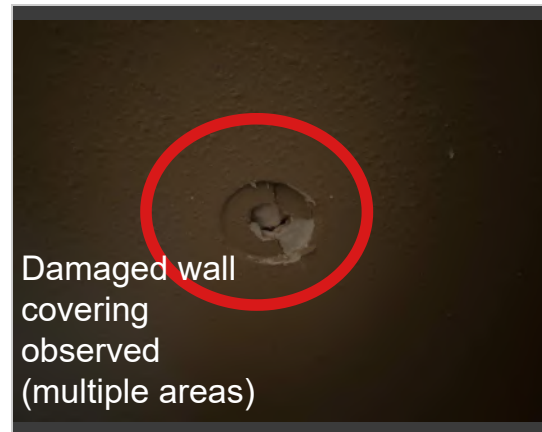


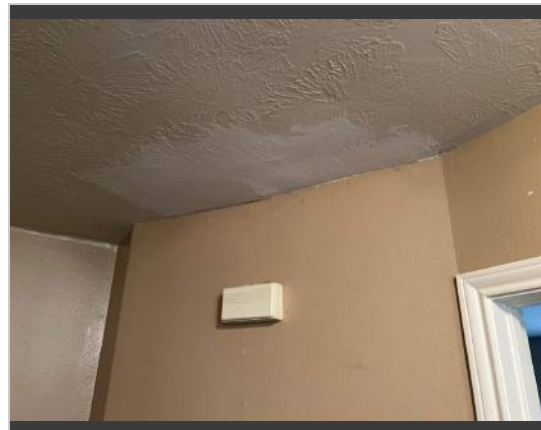
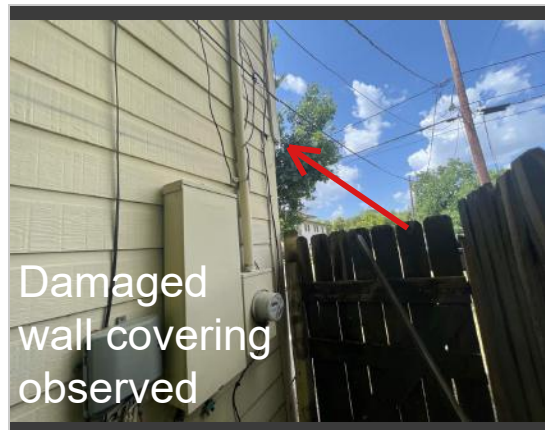
1. I. STRUCTURAL SYSTEMS

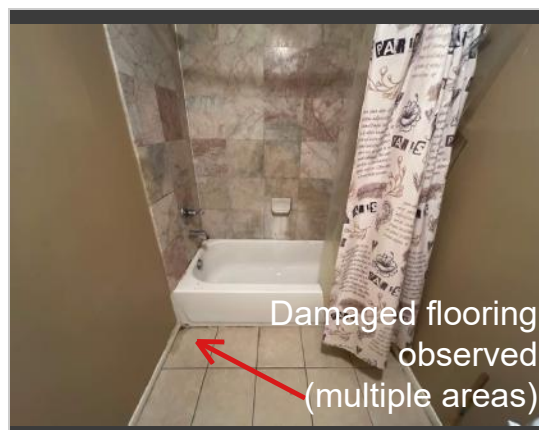
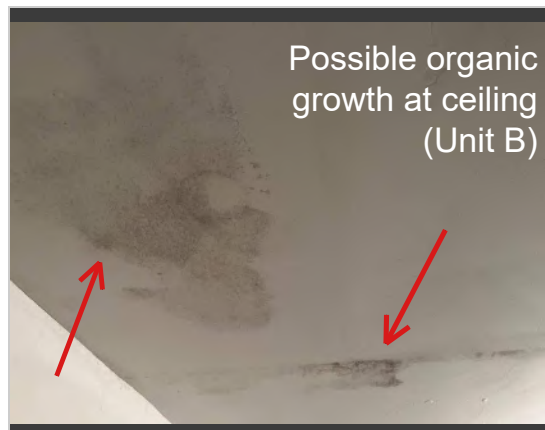
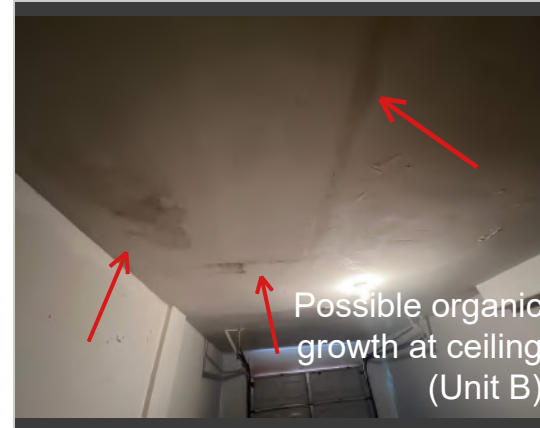
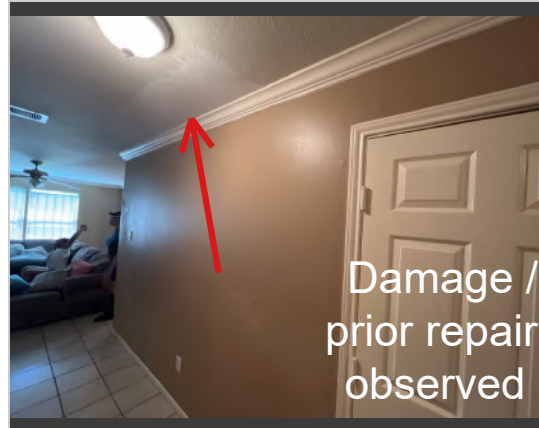
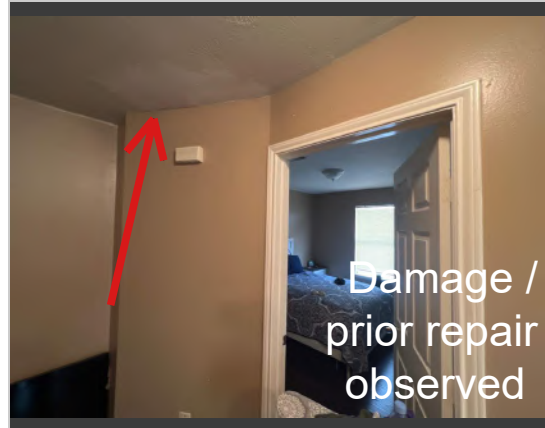


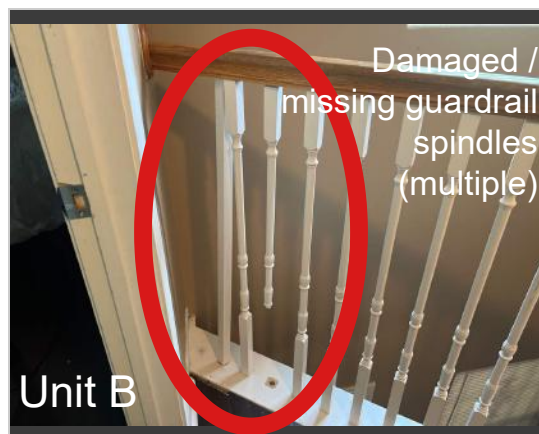
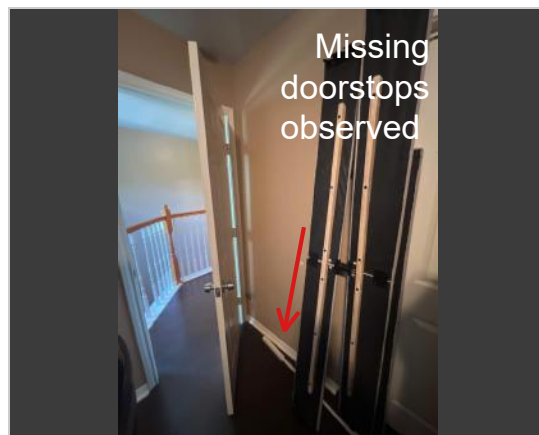
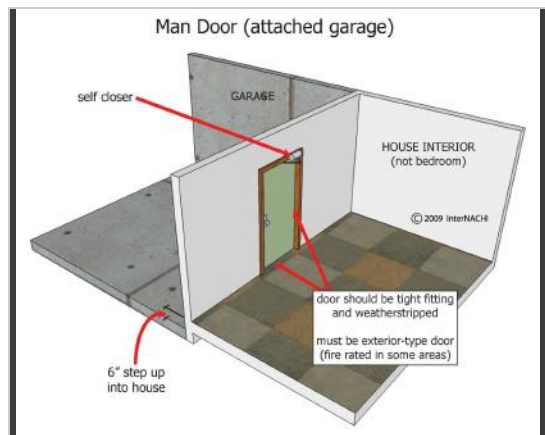
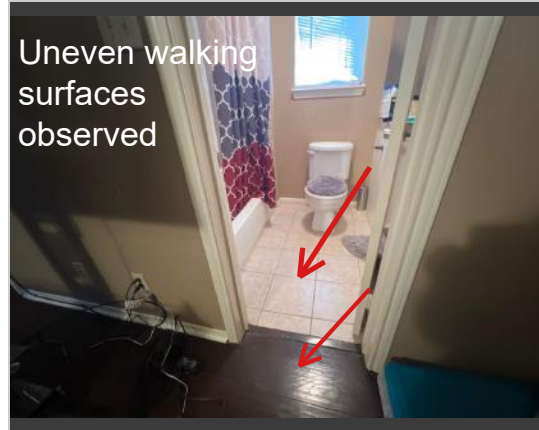


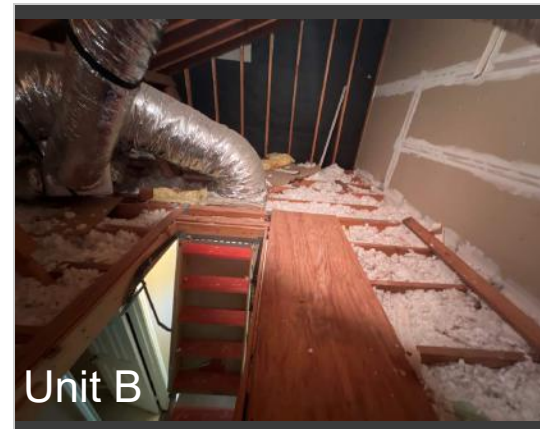
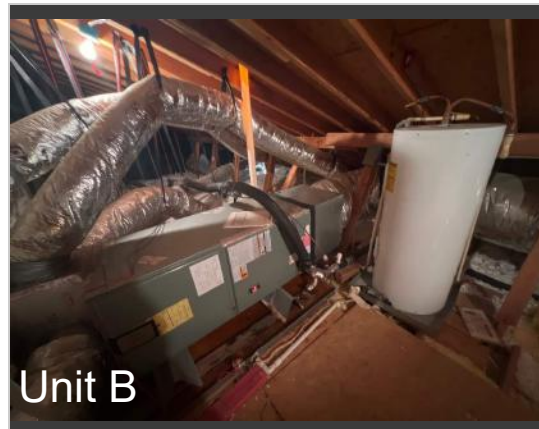
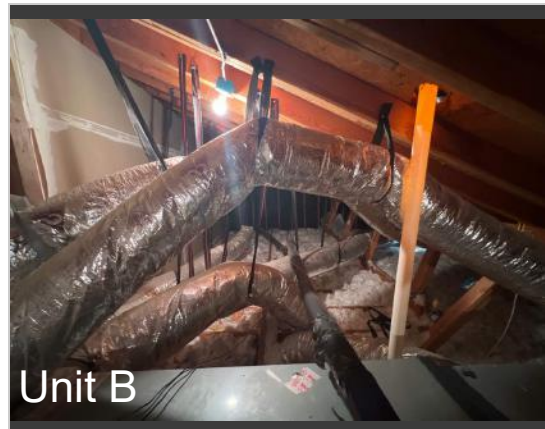
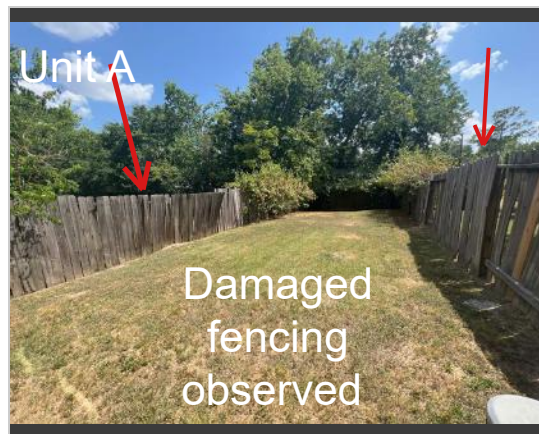
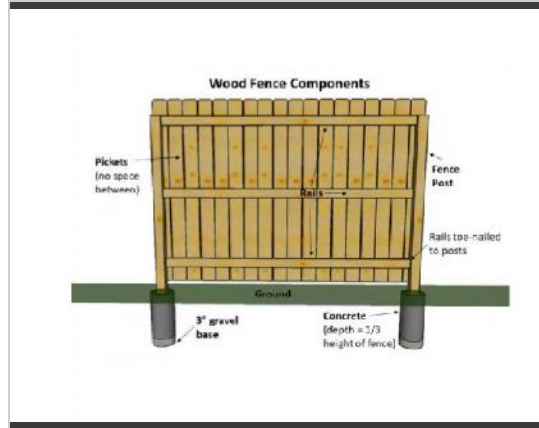


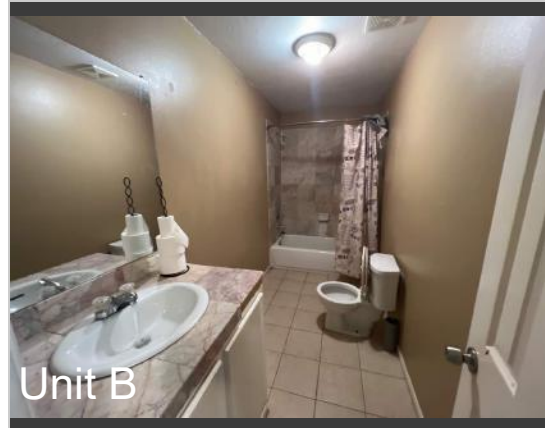




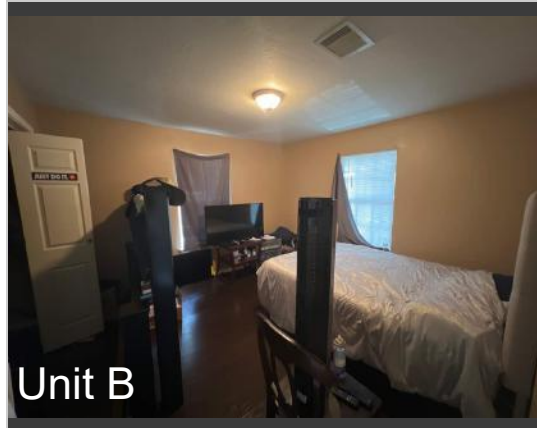




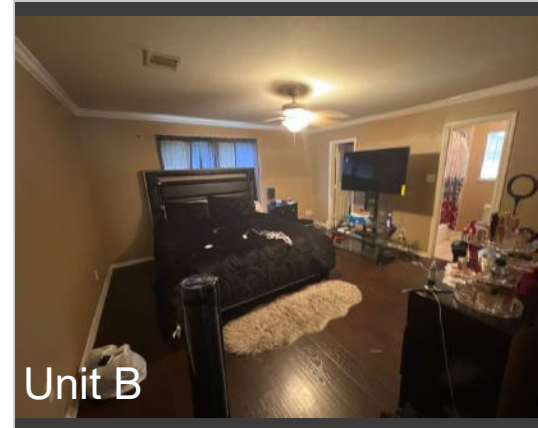




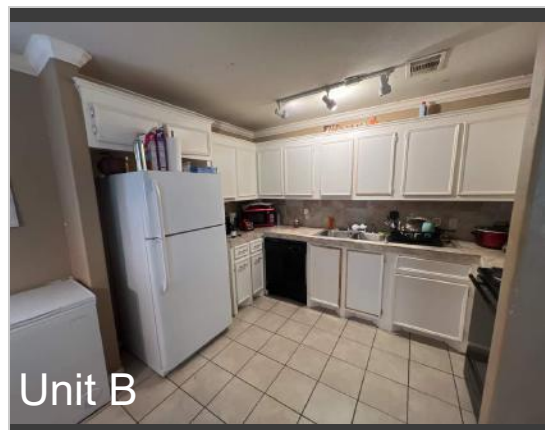
Unit B



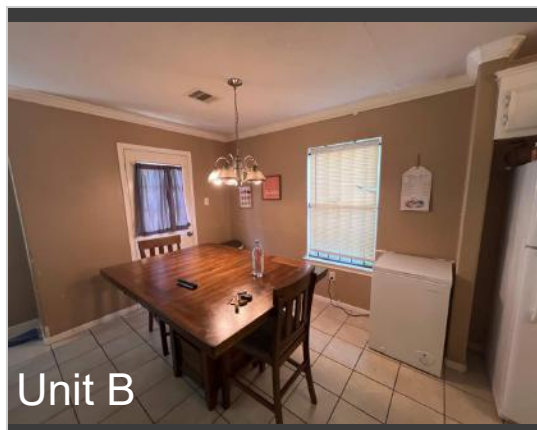
Unit B



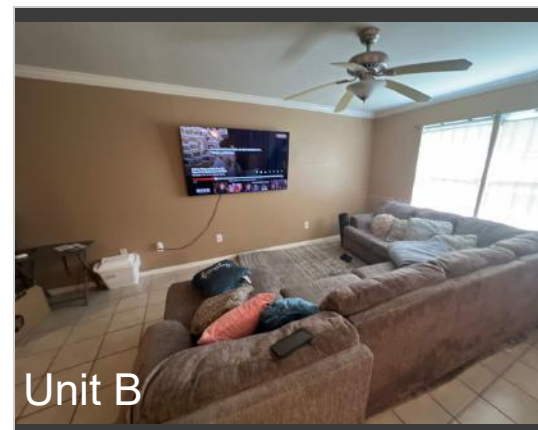
Unit B



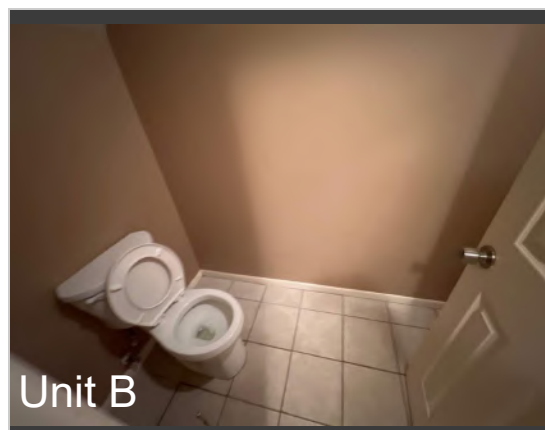
Unit B



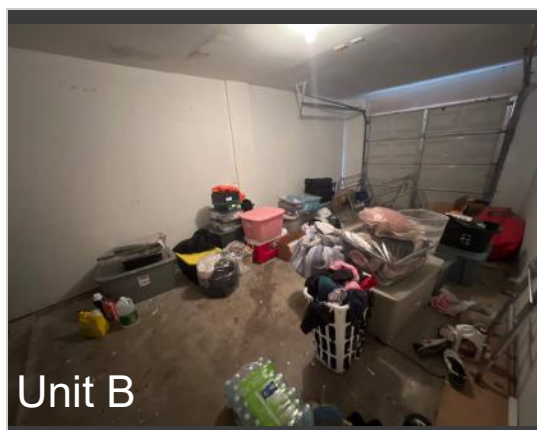
Unit B



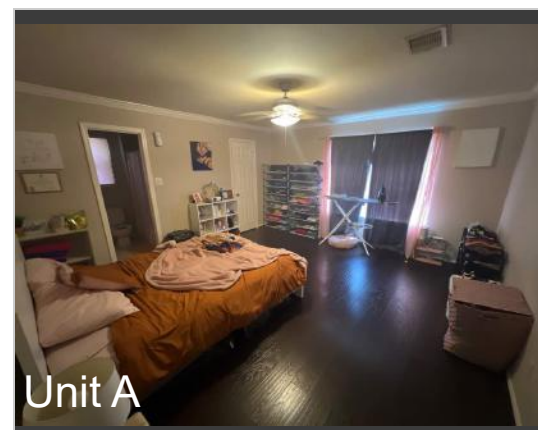
Unit B



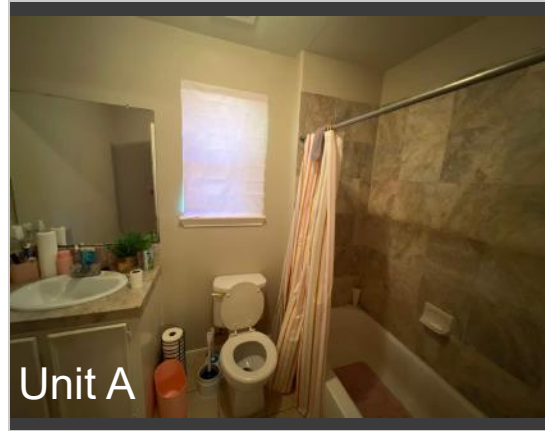
Unit B



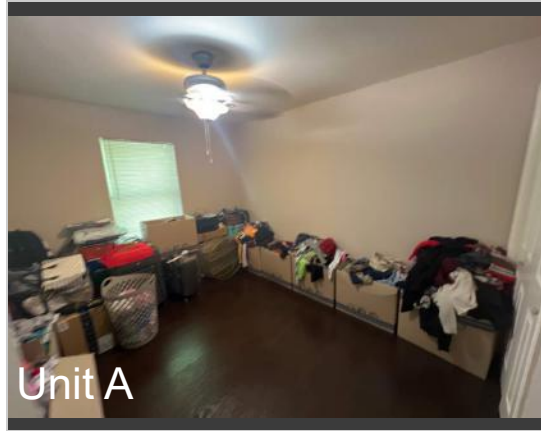
Unit B



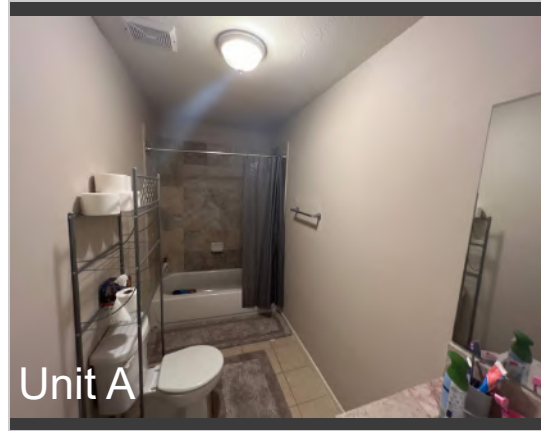
Unit A



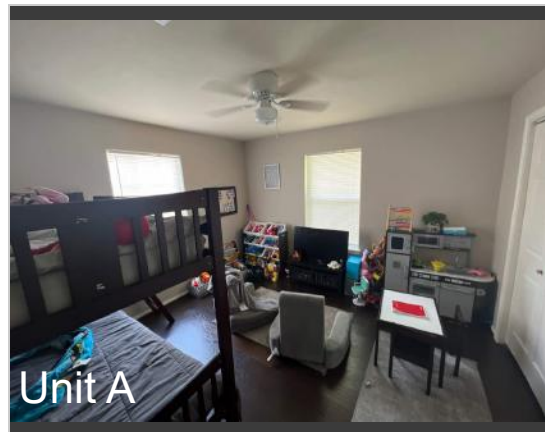
Unit A



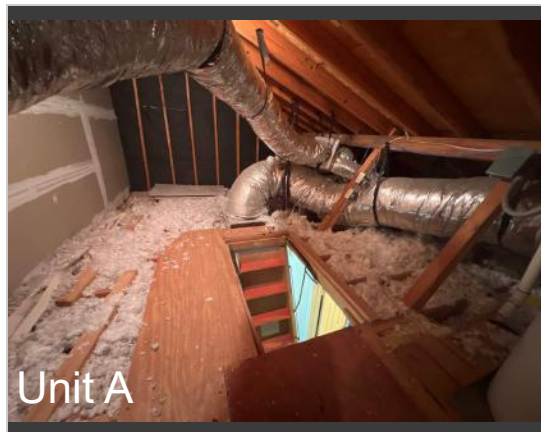
Unit A



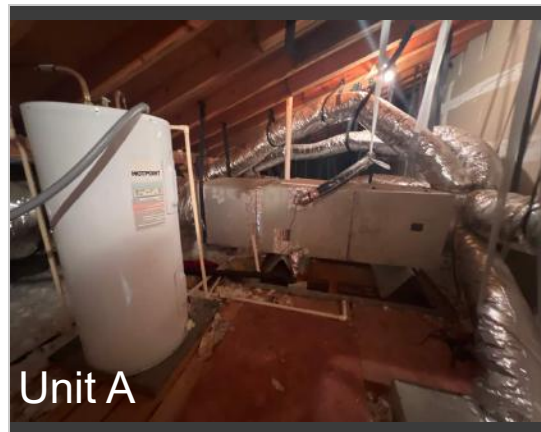
Unit A



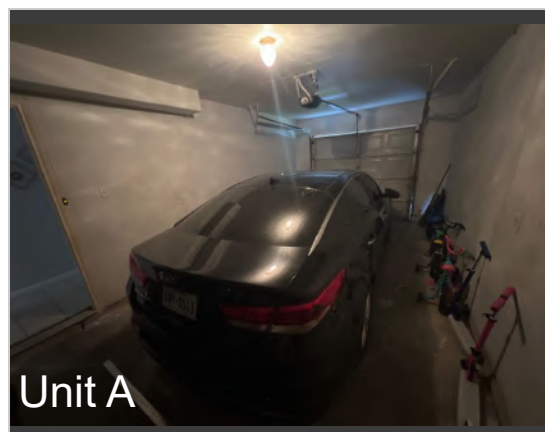
Unit A



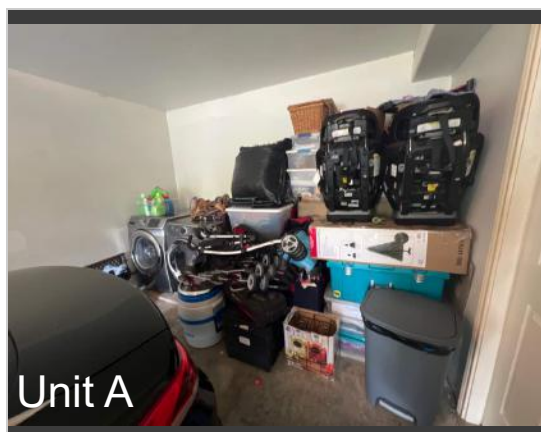
Unit A



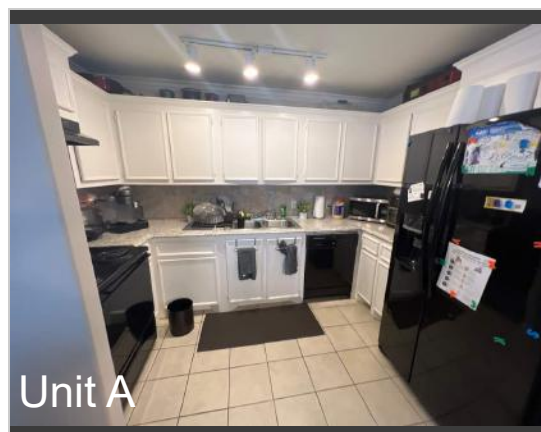
Unit A



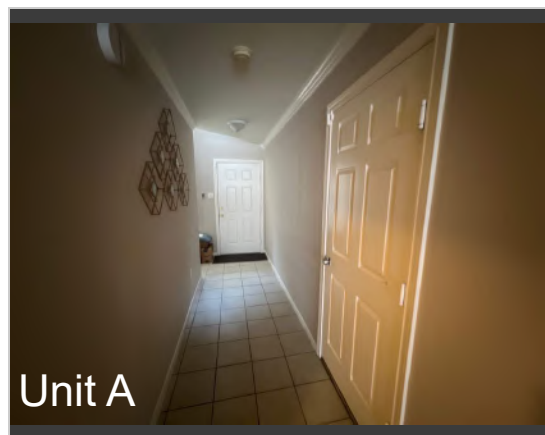
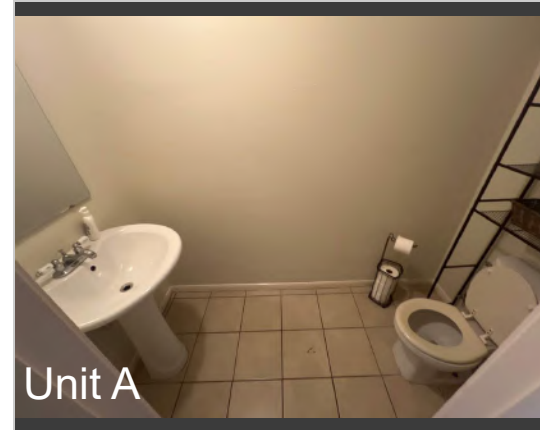
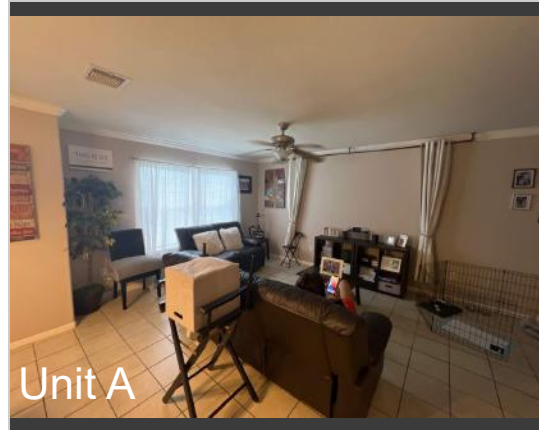
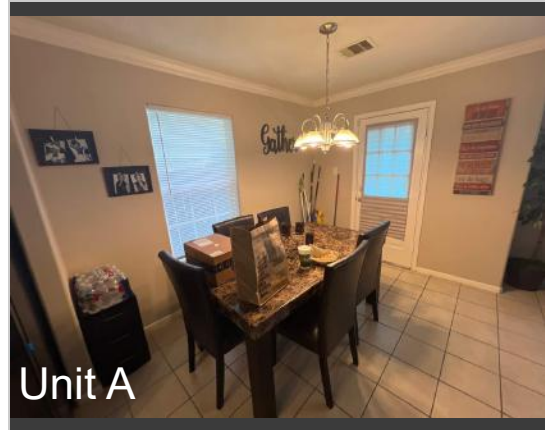
Unit A



Unit A

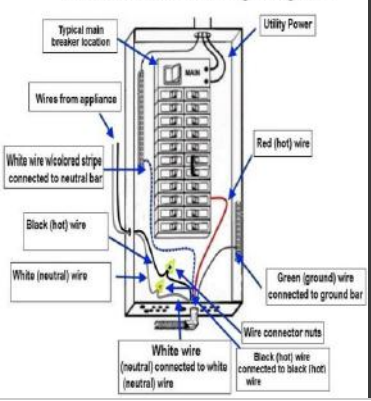


Unit A



2. II. ELECTRICAL SYSTEMS

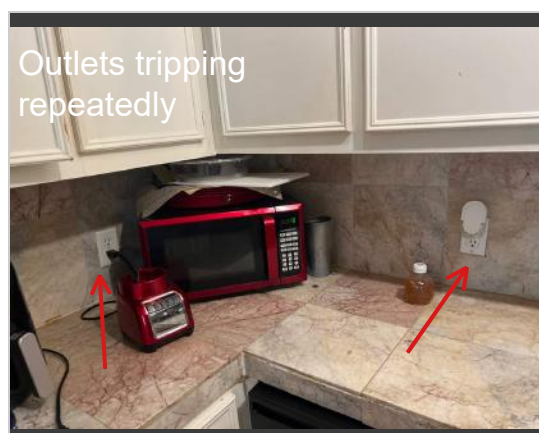
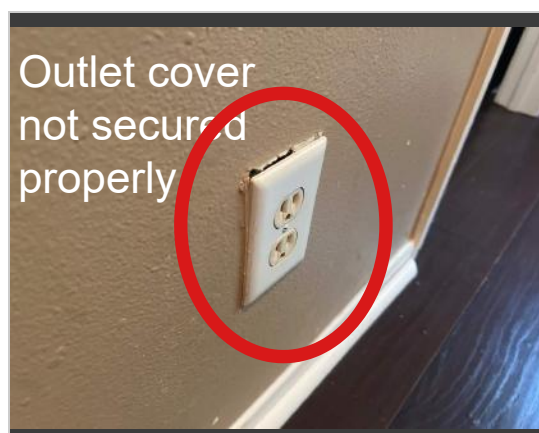
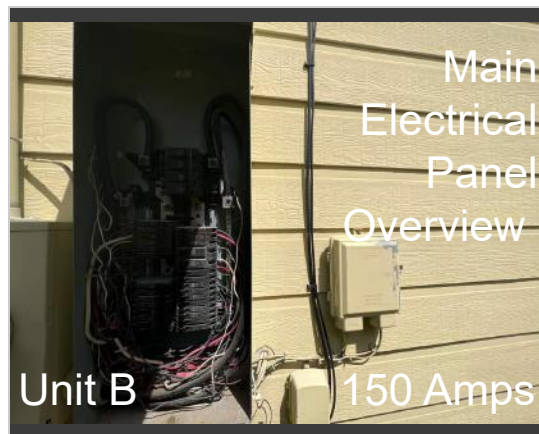
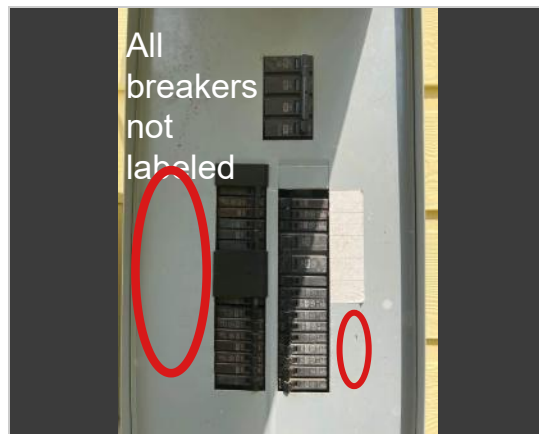
Circuit Breaker Wiring Diagram

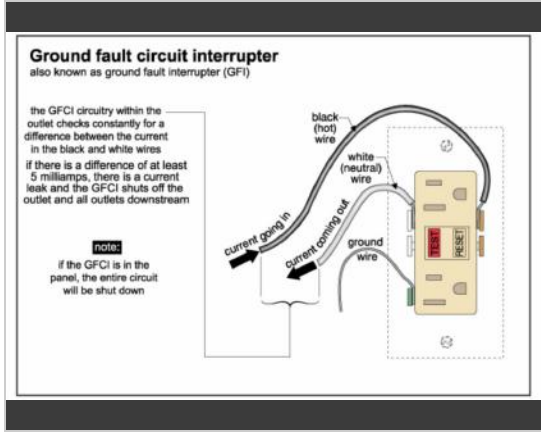
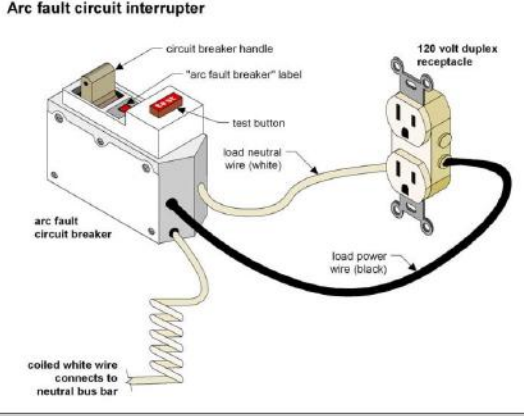


Main Electrical Panel Overview Unit A

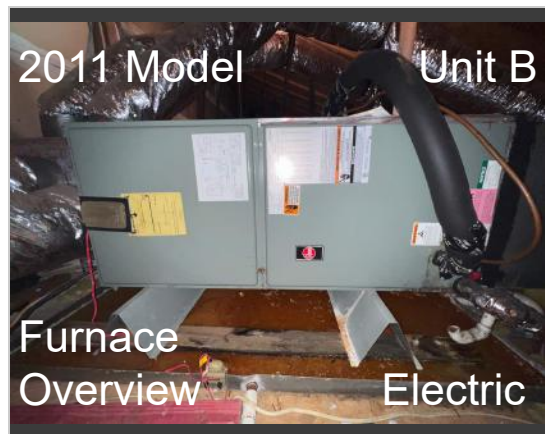
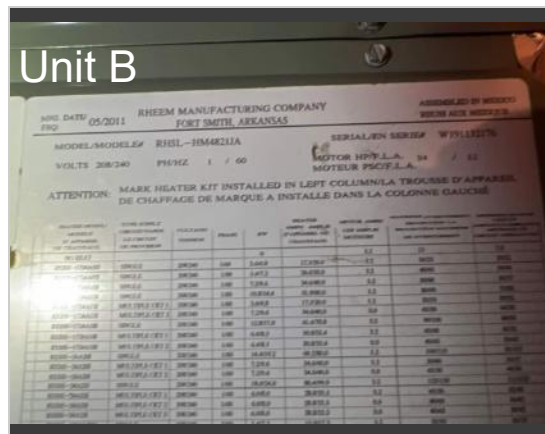


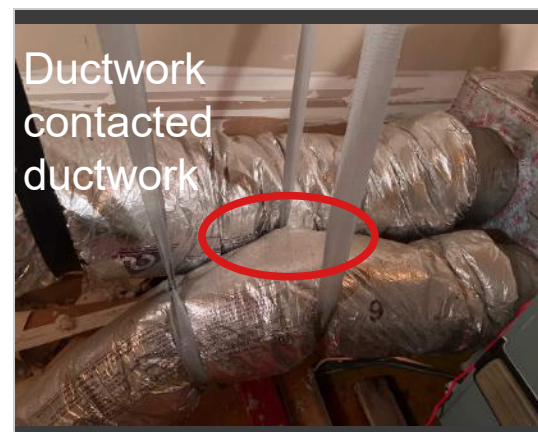
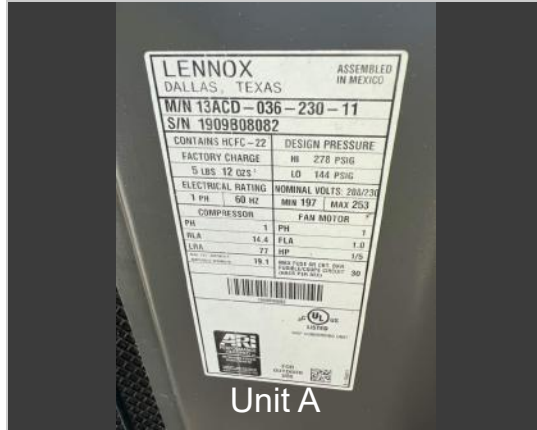
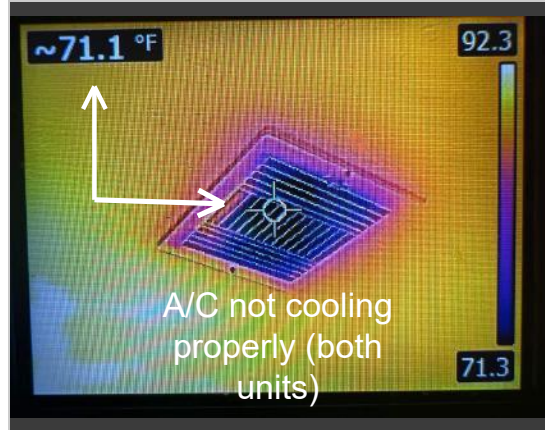
150 Amps





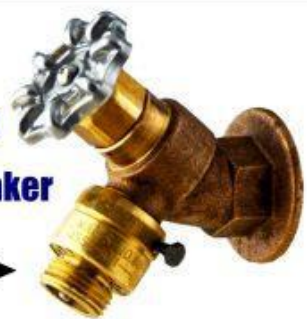
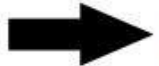
3. III. HEATING, VENTILATION AND AIR CONDITIONING SYSTEMS





4. IV. PLUMBING SYSTEMS

**Hose Bibb
Vacuum Breaker**



Non insulated
water piping
observed in
attic



Main Water
Shut Off
Valve
Location

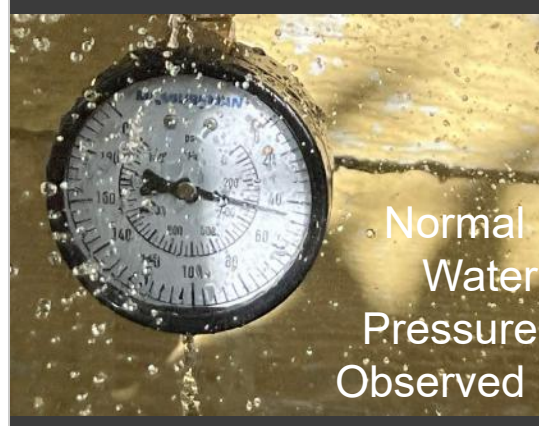
Unit A



Main Water Shut
Off Valve
Location (Unit B)



Normal
Water
Pressure
Observed



Toilets not
anchored
securely

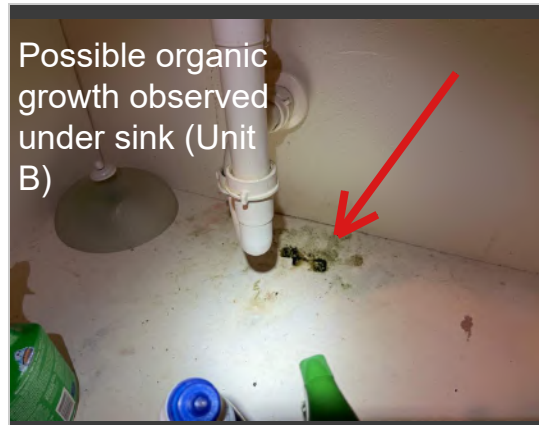


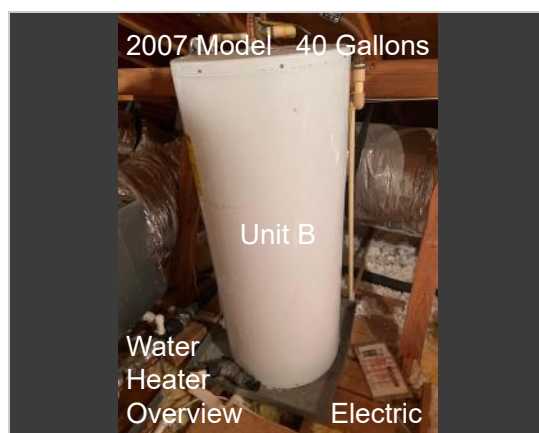
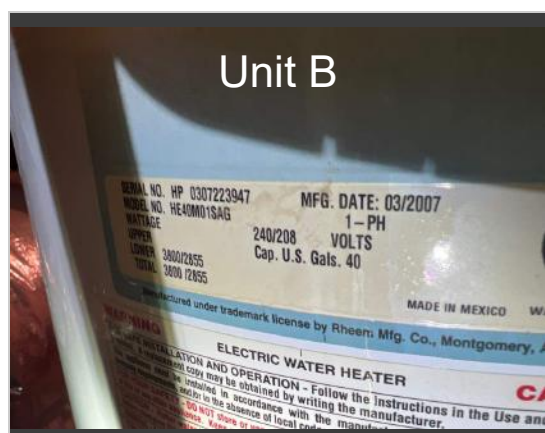
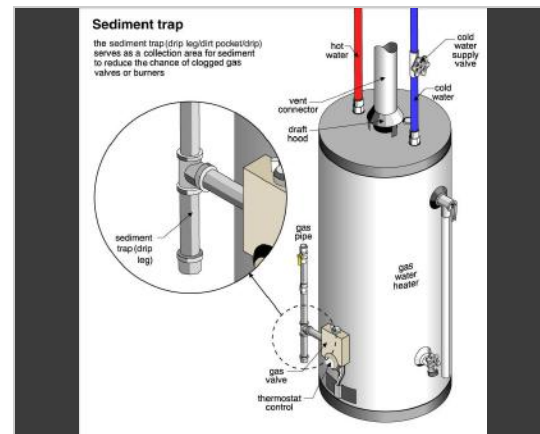
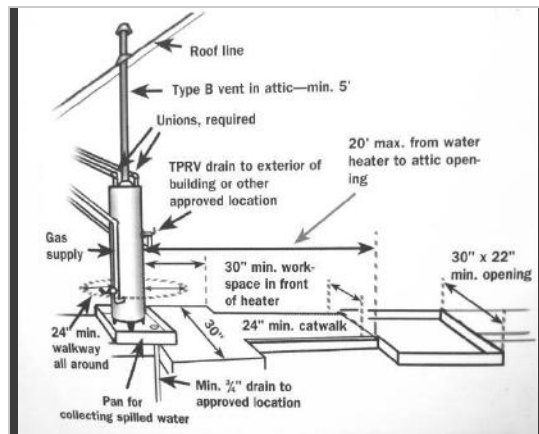
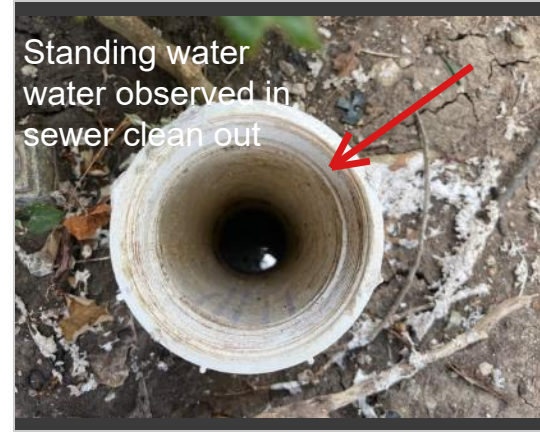
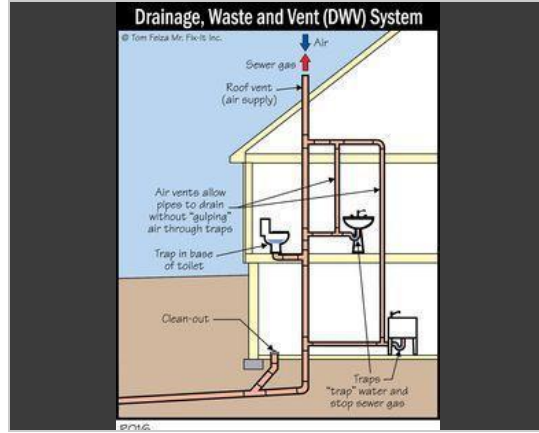
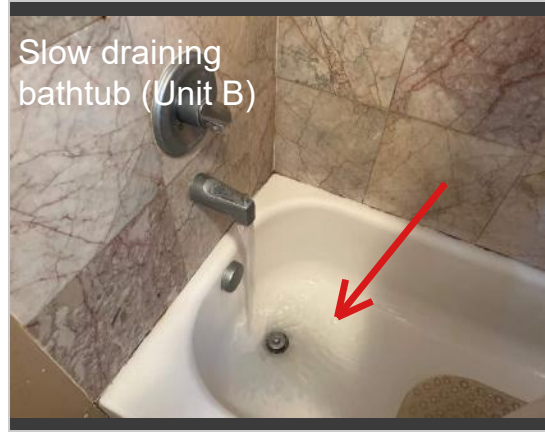
Flush mechanism
did not operate
properly

Unit B



Possible organic
growth observed
under sink (Unit B)





Unit A

SERIAL NO. HP 0407202682 MFG. DATE: 04/2007
MODEL NO. HE40M01SAG 1-PH
WATTAGE 240/208 VOLTS
UPPER Cap. U.S. Gals. 40
LOWER 3800/2855
TOTAL 3800 /2855

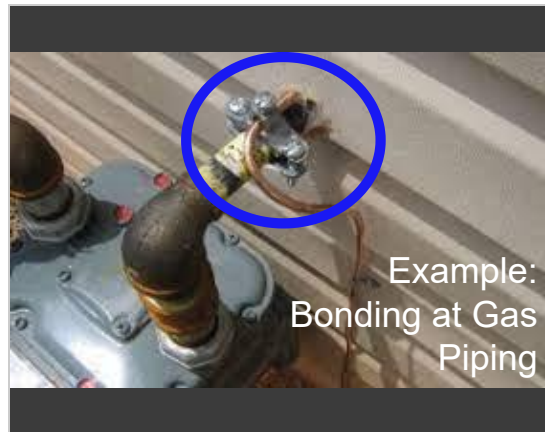
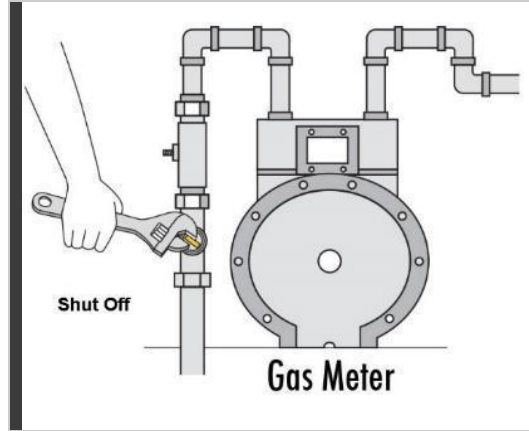
Manufactured under trademark license by Rheem Mfg. Co., Montgomery

WARNING ELECTRIC WATER HEATER
FOR SAFE INSTALLATION AND OPERATION - Follow the instructions in the U.S. provided. A replacement copy may be obtained by writing the manufacturer.
This appliance must be installed by a licensed electrician.

2007 Model - 40 Gallons

Unit A

Water Heater Overview Electric



5. V. APPLIANCES

