



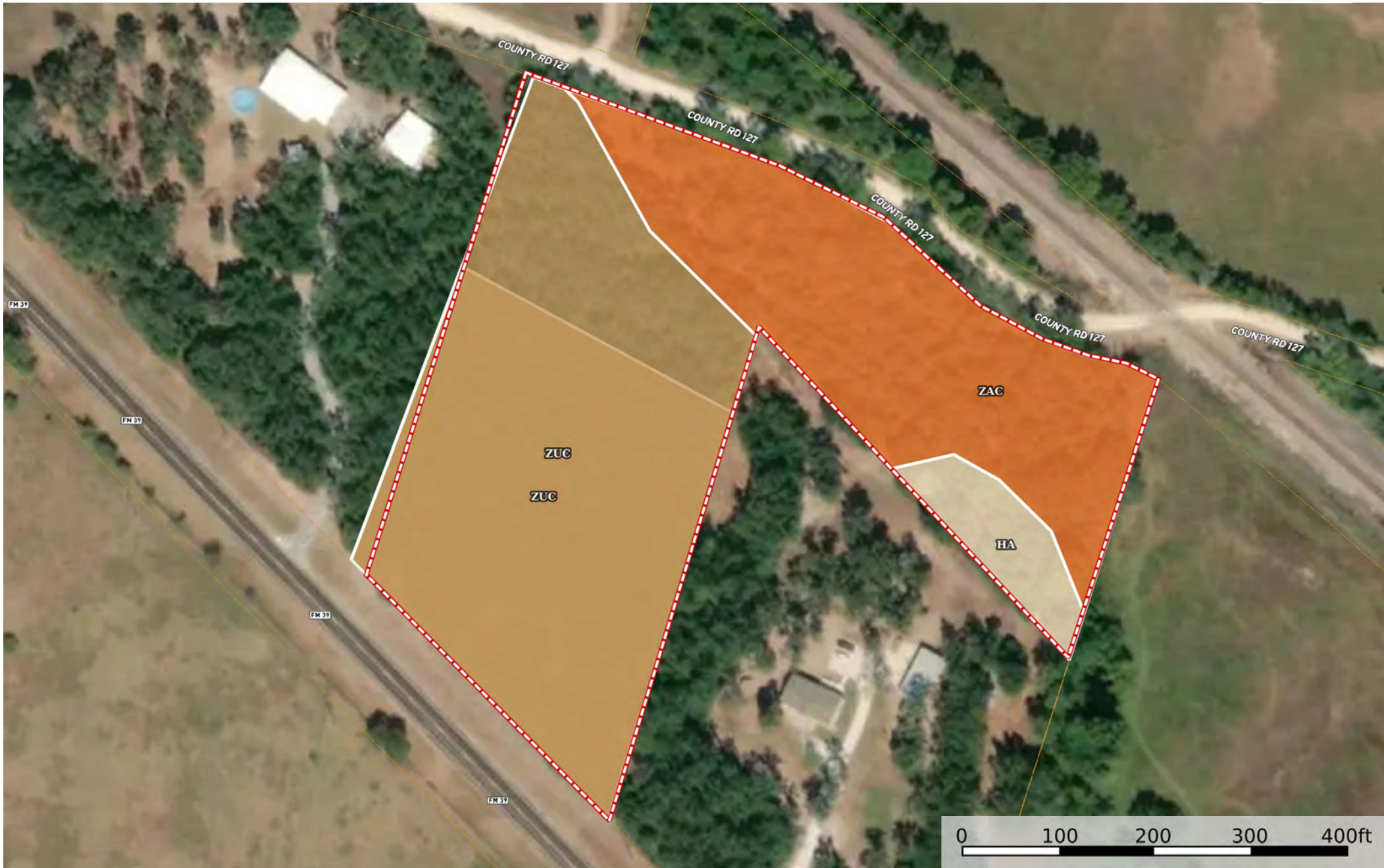
Boundary



Boundary



- Boundary
- 100 Year Floodplain
- 500 Year Floodplain
- Floodway
- Special
- Unmapped/Not Included




Boundary

 All Polygons 9.51 ac

SOIL CODE	SOIL DESCRIPTION	ACRES	%	CPI	NCCPI	CAP
ZuC	Zulch fine sandy loam, 1 to 5 percent slopes	6.8	71.5	0	48	3e
ZaC	Zack fine sandy loam, 1 to 5 percent slopes	2.34	24.61	0	35	4e
Ha	Hatliff fine sandy loam, frequently flooded	0.37	3.89	0	31	5w
TOTALS		9.51(*)	100%	-	44.14	3.32

(*) Total acres may differ in the second decimal compared to the sum of each acreage soil. This is due to a round error because we only show the acres of each soil with two decimal.

 Boundary 2.87 ac

SOIL CODE	SOIL DESCRIPTION	ACRES	%	CPI	NCCPI	CAP
ZuC	Zulch fine sandy loam, 1 to 5 percent slopes	2.87	100	0	48	3e
TOTALS		2.87(*)	100%	-	48.0	3

(*) Total acres may differ in the second decimal compared to the sum of each acreage soil. This is due to a round error because we only show the acres of each soil with two decimal.

 Boundary 6.64 ac

SOIL CODE	SOIL DESCRIPTION	ACRES	%	CPI	NCCPI	CAP
ZuC	Zulch fine sandy loam, 1 to 5 percent slopes	3.93	59.19	0	48	3e
ZaC	Zack fine sandy loam, 1 to 5 percent slopes	2.34	35.24	0	35	4e
Ha	Hatliff fine sandy loam, frequently flooded	0.37	5.57	0	31	5w
TOTALS		6.64(*)	100%	-	42.47	3.46

(*) Total acres may differ in the second decimal compared to the sum of each acreage soil. This is due to a round error because we only show the acres of each soil with two decimal.

Capability Legend

Increased Limitations and Hazards

Decreased Adaptability and Freedom of Choice Users

Land, Capability



'Wild Life'

Forestry

Limited

Moderate

Intense

Limited

Moderate

Intense

Very Intense

Grazing Cultivation

(c) climatic limitations (e) susceptibility to erosion

(s) soil limitations within the rooting zone (w) excess of water