

# HADEN PARK



 **SPRING  
BRANCH  
DISTRICT**  
THE HEART OF HOUSTON®

[SBMD.org](http://SBMD.org)

**swa**



COMMUNITY PARK



NATURE PARK



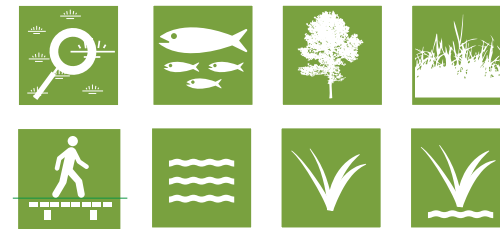
FAMILY PARK

# HADEN PARK



## **COMMUNITY PARK**

- EVENT LAWN / PROMENADE**
- COMMUNITY GARDEN**
- TENNIS**
- DOG PARK**
- SHADE STRUCTURE**
- PARKING**
- RESTROOM**
- MOVIES IN THE PARK**
- LIVE MUSIC**
- WEDDING PHOTO OPPS**
- FESTIVAL SPACE**
- OUTDOOR MARKET**
- FOOD TRUCKS**
- INSTALLATION ART**
- INTERACTIVE ART**
- TRAIL**
- PICNICKING**



## **NATURE PARK**

- INVASIVES REMOVAL**
- FOREST PRESERVATION**
- WILDLIFE HABITAT**
- WILDFLOWER FIELDS**
- WATER CONSERVATION**
- BIOSWALES**
- NATURE TRAIL**
- OUTDOOR EDUCATION**



## **FAMILY PARK**

- PARKING**
- TRAIL**
- PLAYGROUND**
- SPLASH PARK**
- ADVENTURE PLAYGROUND**
- ADVENTURE FOREST**
- SHADE STRUCTURE**
- PICNICKING**

**FAMILY  
PARK**



**NATURE  
PARK**



**COMMUNITY  
PARK**



# ILLUSTRATIVE MASTER PLAN



- ① Parking Lot (23 + 2 accessible spaces & 7 parallel parking spaces)
- ② Entry Grove
- ③ Event Lawn
- ④ Restroom + Trellis
- ⑤ Park Canopy Structure + Stage
- ⑥ Community Garden
- ⑦ Promenade
- ⑧ The Haden Walk
- ⑨ Small Dog Park
- ⑩ Large Dog Park
- ⑪ Shade Structure
- ⑫ Tennis Courts
- ⑬ Wildflower Buffer
- ⑭ Swale
- ⑮ Haden + Old Haden Pond
- ⑯ Outdoor Nature Education + Overlook
- ⑰ Forest Trails
- ⑱ Haden Bioswale
- ⑲ Existing Mitigation Swale
- ⑳ Existing Parking Lot (9 + 2 accessible spaces)
- ㉑ Shade Structure / Picnic
- ㉒ Craig Memorial Bench
- ㉓ Playground
- ㉔ Toddler Playground
- ㉕ Splash Pad
- ㉖ Adventure Play Area
- ㉗ Tree House
- ㉘ Existing Pavilion
- ㉙ Haden Hill

# ILLUSTRATIVE MASTER PLAN

## FAMILY PARK

## NATURE PARK

## COMMUNITY PARK



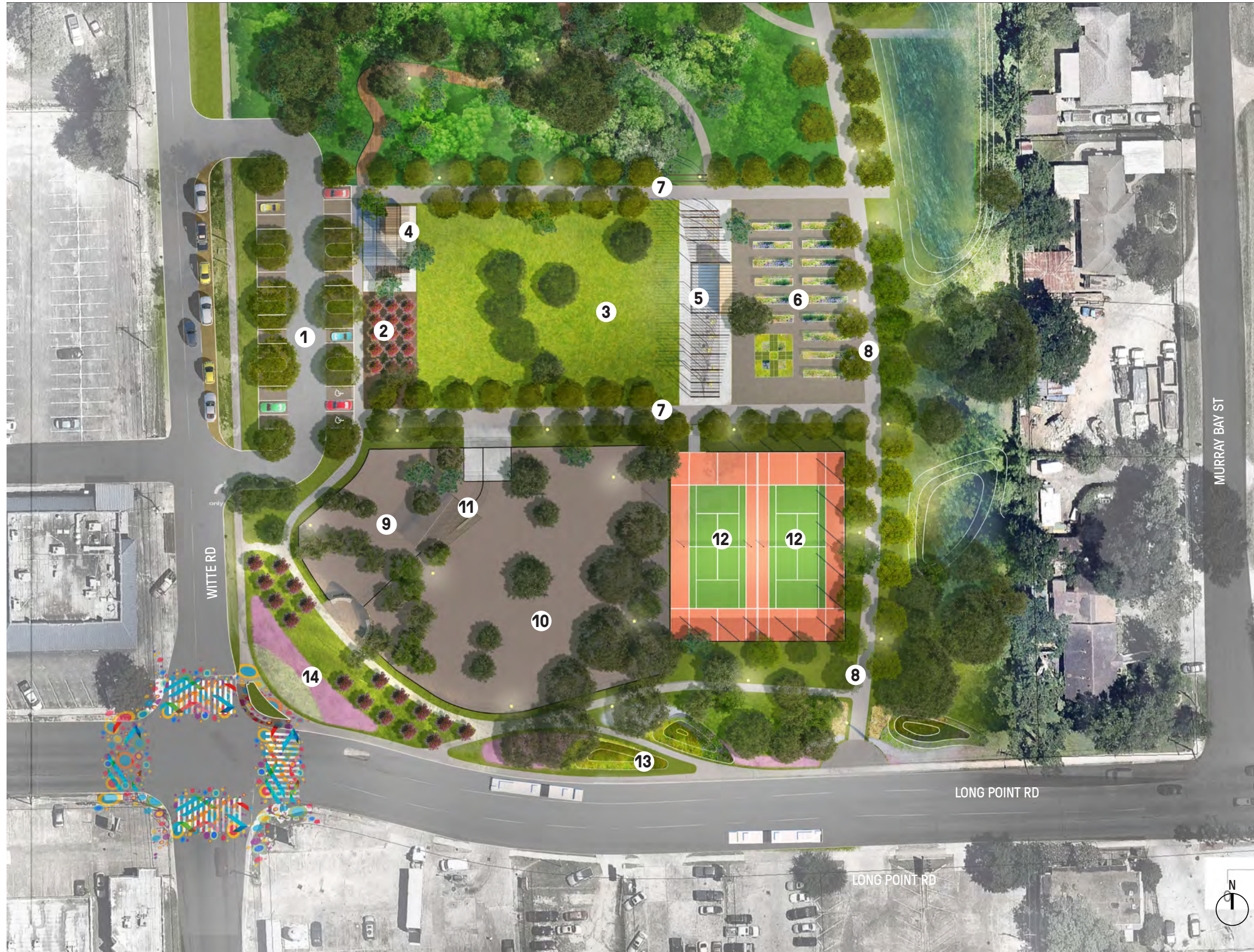
- 1 Parking Lot ((23 + 2 accessible spaces & 7 parallel parking spaces))
- 2 Entry Grove
- 3 Event Lawn
- 4 Restroom + Trellis
- 5 Park Canopy Structure + Stage
- 6 Community Garden
- 7 Promenade
- 8 The Haden Walk
- 9 Small Dog Park
- 10 Large Dog Park
- 11 Shade Structure
- 12 Tennis Courts
- 13 Wildflower Buffer
- 14 Swale
- 15 Haden + Old Haden Pond
- 16 Outdoor Nature Education + Overlook
- 17 Forest Trails
- 18 Haden Bioswale
- 19 Existing Mitigation Swale
- 20 Existing Parking Lot (9 + 2 accessible spaces)
- 21 Shade Structure / Picnic
- 22 Craig Memorial Bench
- 23 Playground
- 24 Toddler Playground
- 25 Splash Pad
- 26 Adventure Play Area
- 27 Tree House
- 28 Existing Pavilion
- 29 Haden Hill

Phase 1



## COMMUNITY PARK

# MASTER PLAN ENLARGEMENT



- 1 Parking Lot (23 + 2 accessible spaces & 7 parallel spaces)
- 2 Entry Grove
- 3 Event Lawn
- 4 Restroom + Trellis
- 5 Park Canopy Structure + Stage
- 6 Community Garden
- 7 Promenade
- 8 The Haden Walk
- 9 Small Dog Park
- 10 Large Dog Park
- 11 Shade Structure
- 12 Tennis Courts
- 13 Bio Swale
- 14 Wildflower Buffer

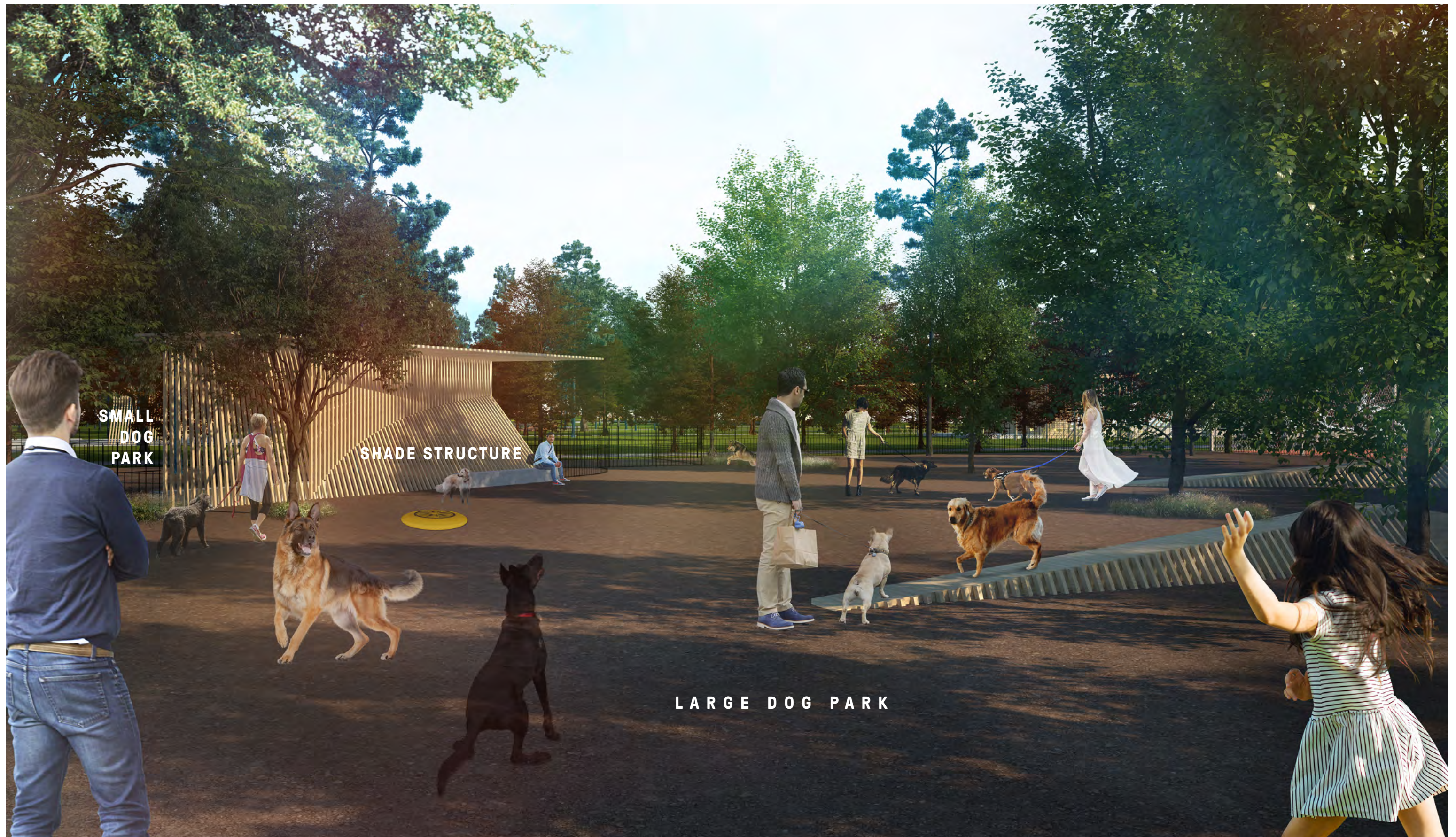
## COMMUNITY PARK



# ENTRY STRUCTURE



LOOKING WEST



**SMALL  
DOG  
PARK**

**SHADE STRUCTURE**

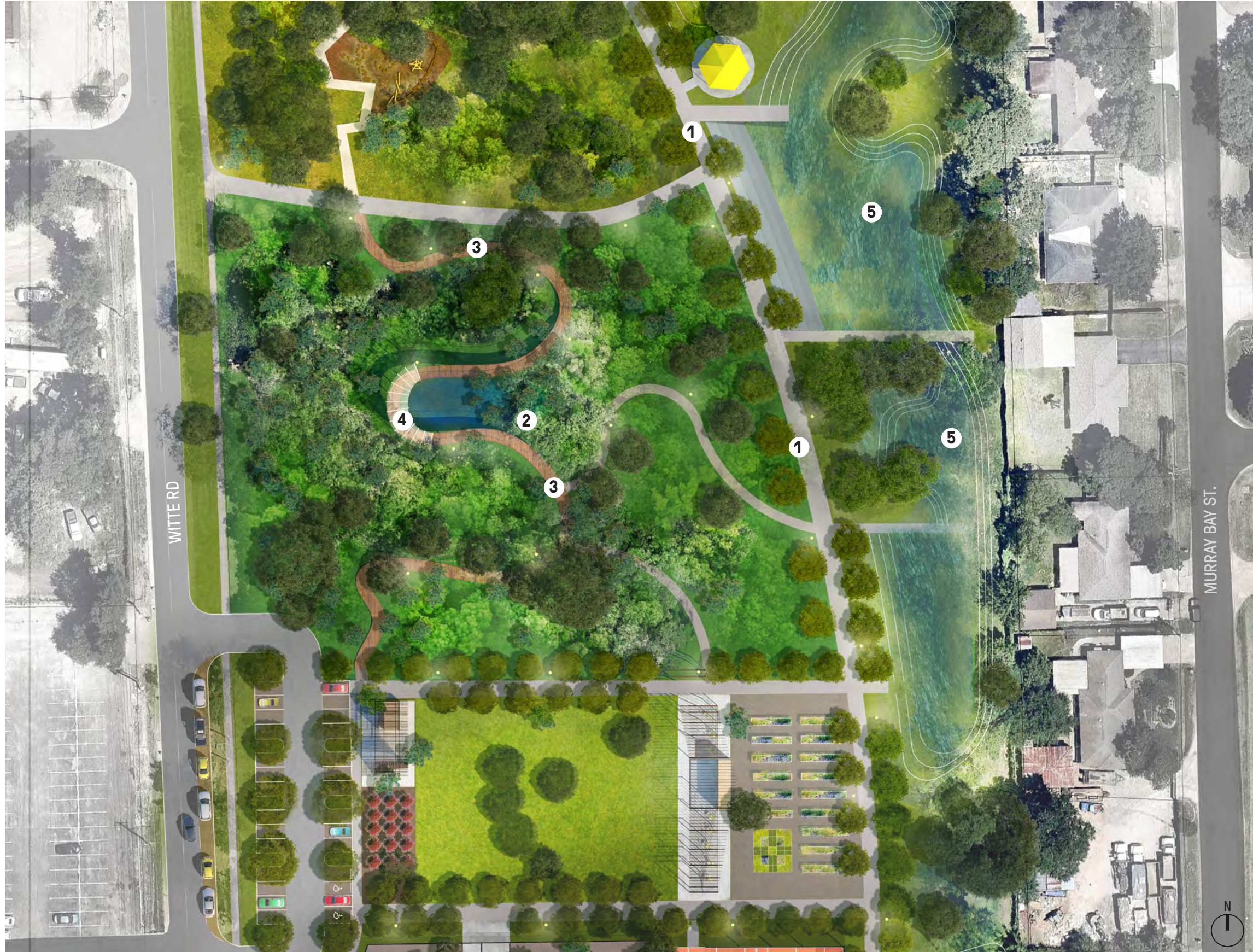
**LARGE DOG PARK**

Phase TBD

NATURE PARK



# MASTER PLAN ENLARGEMENT



- 1 The Haden Walk
- 2 Forest Area+ Old Haden Pond
- 3 Haden Forest + Forest Trail
- 4 Outdoor Nature Education + Overlook
- 5 Haden Bioswale

## NATURE PARK



FOREST TRAIL

OLD HADEN POND

THE HADEN WALK

FAMILY PARK



Phase TBD

# MASTER PLAN ENLARGEMENT



- 1 Haden Bioswale
- 2 Existing Mitigation Swale
- 3 Existing Parking Lot (9 + 2 accessible spaces)
- 4 Shade Structure / Picnic
- 5 Craig Memorial Bench
- 6 Playground
- 7 Toddler Playground
- 8 Splash Pad
- 9 Adventure Play Area
- 10 Tree House
- 11 Haden Hill

## FAMILY PARK

# FAMILY PARK



LOOKING SOUTH



# DRAINAGE DIAGRAM



## Detention Summary:

Proposed New Impervious Cover = 145,695 sq.ft.


Existing Impervious to be Removed = 23,412 sq.ft.

Net Increase Impervious Cover = 122,283 sq.ft = 2.807 ac.

Required Detention = 61,142 cu.ft.

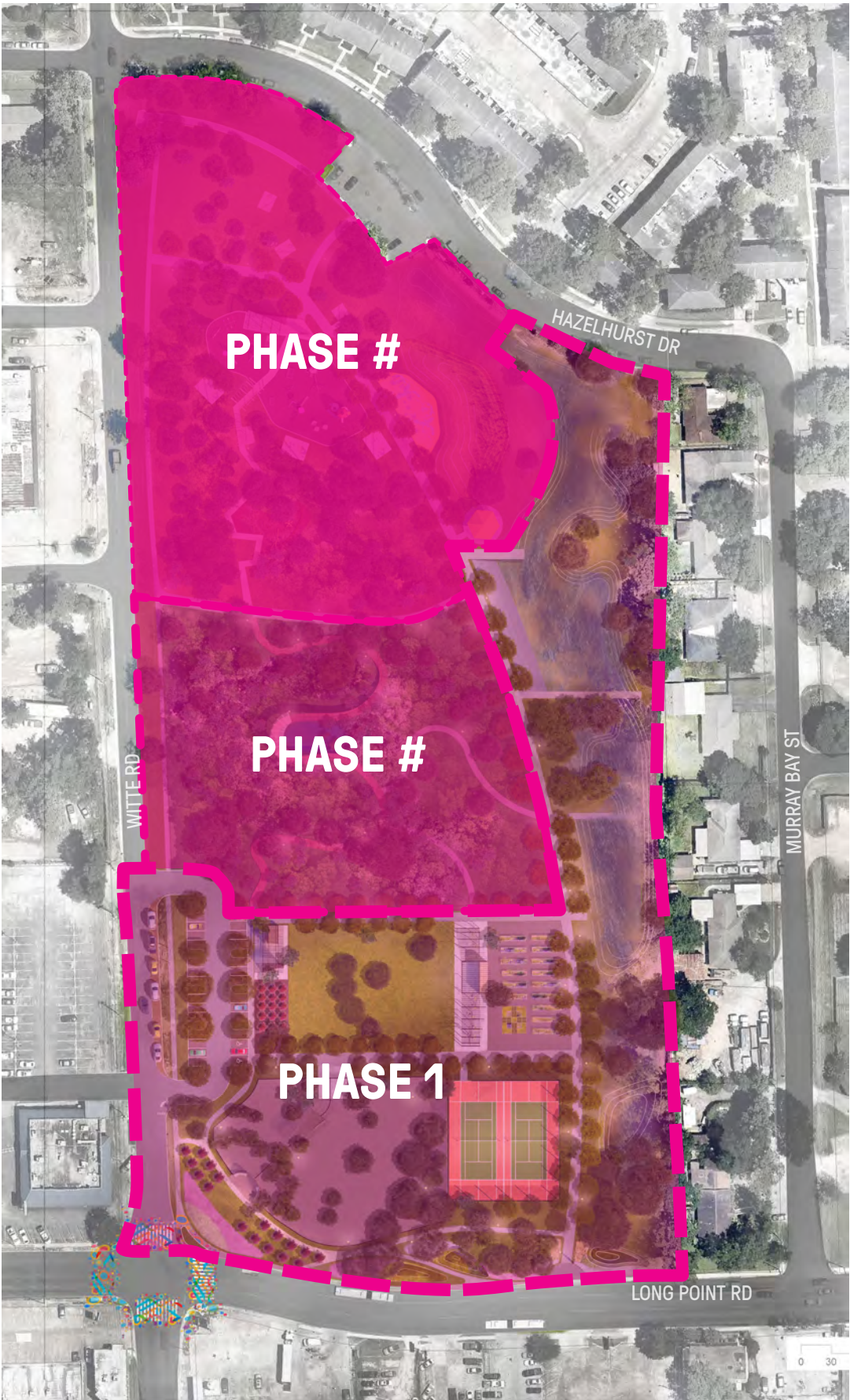
Detention Provided = 95,086 cu.ft.

 Existing Mitigation Pond

 Proposed Detention/Bioswale

 Permeable Paving

# PHASING DIAGRAM



Phase 1  
Community Park

Phase 2 & 3  
To be Determined

# HADEN PARK



 **SPRING  
BRANCH  
DISTRICT**  
THE HEART OF HOUSTON®

[SBMD.org](http://SBMD.org)

LONG POINT RD.

**swa**