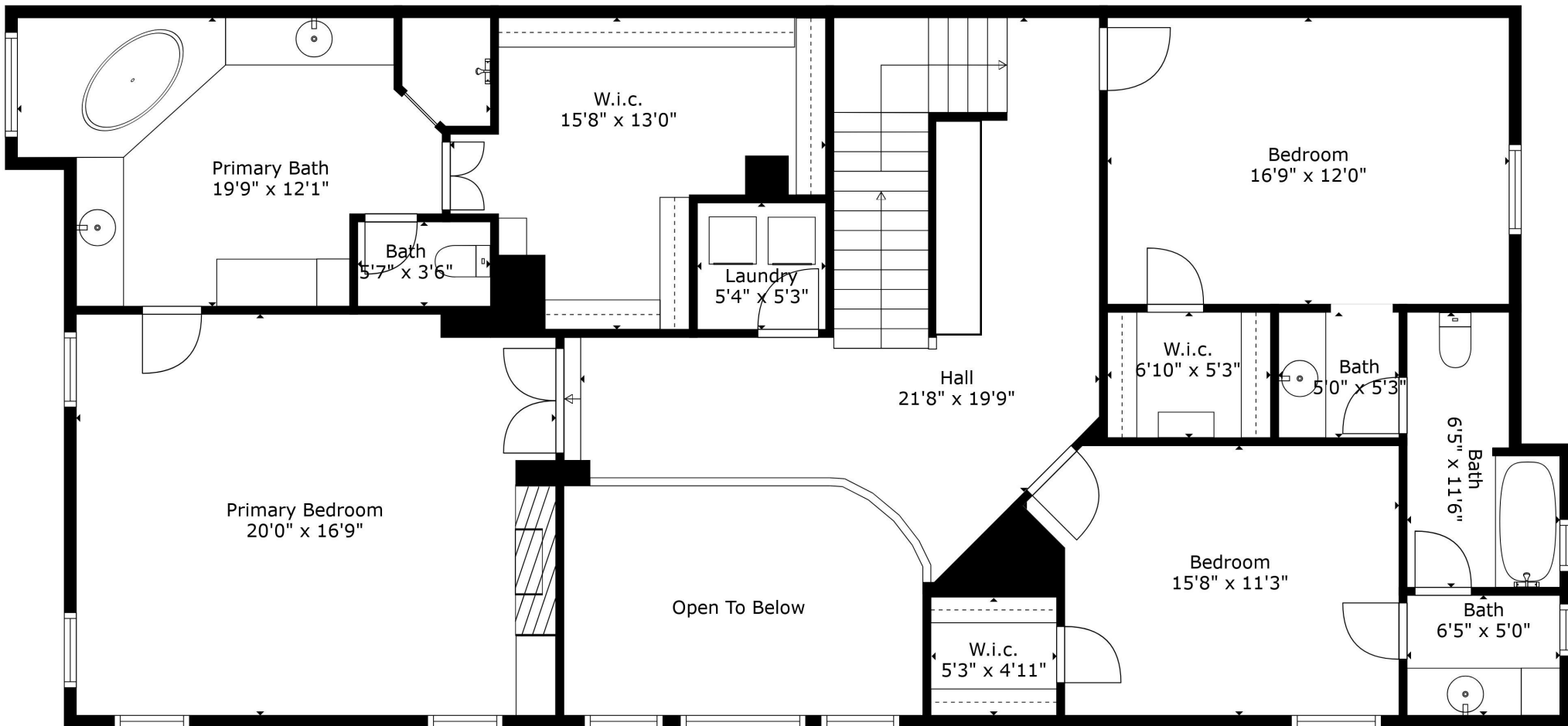


GROSS INTERNAL AREA

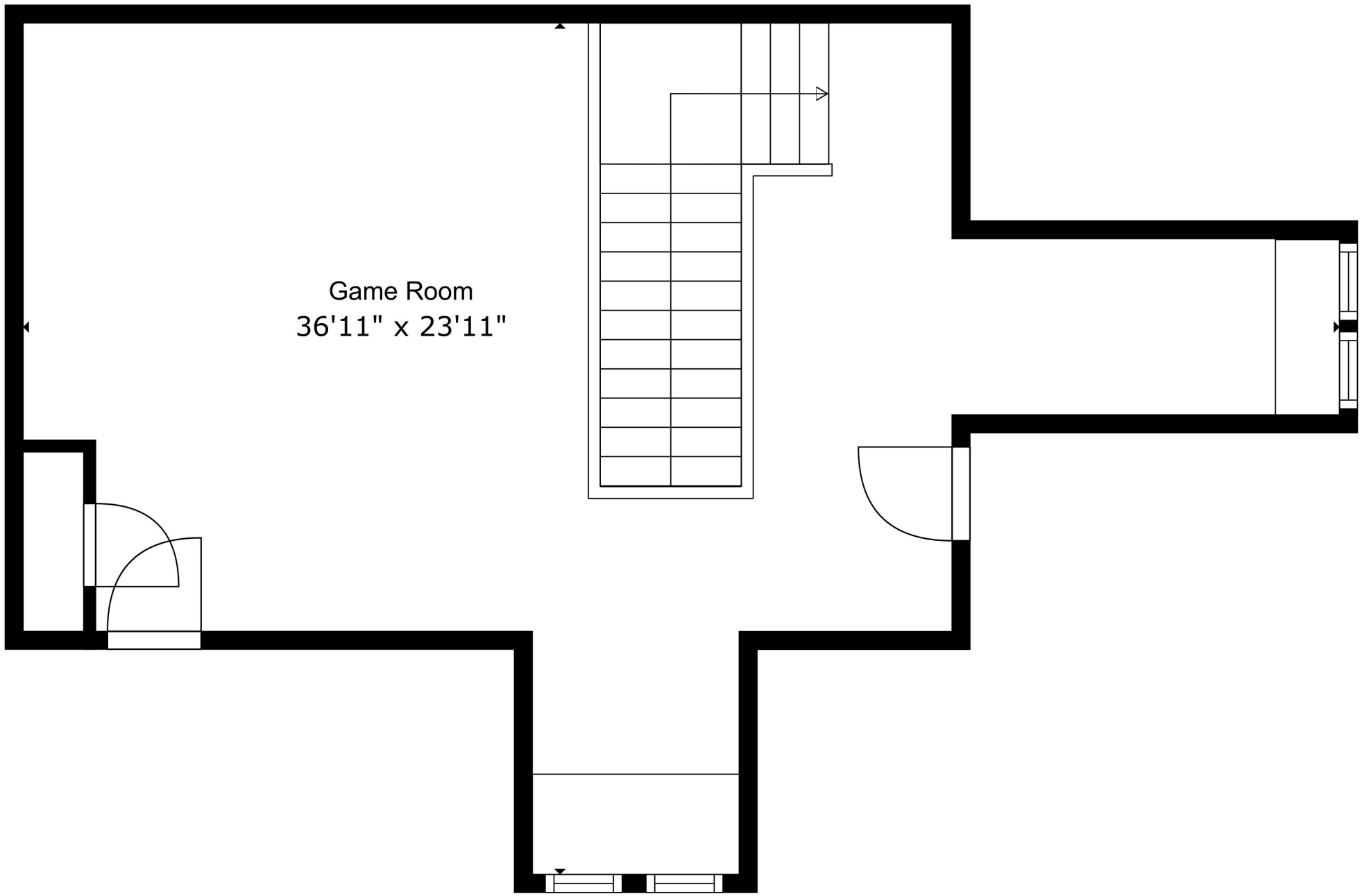
FLOOR 1: 1297 sq. ft, FLOOR 2: 1601 sq. ft, FLOOR 3: 536 sq. ft

EXCLUDED AREAS: GARAGE: 415 sq. ft, PATIO: 733 sq. ft, OPEN TO BELOW: 139 sq. ft

TOTAL: 3434 sq. ft



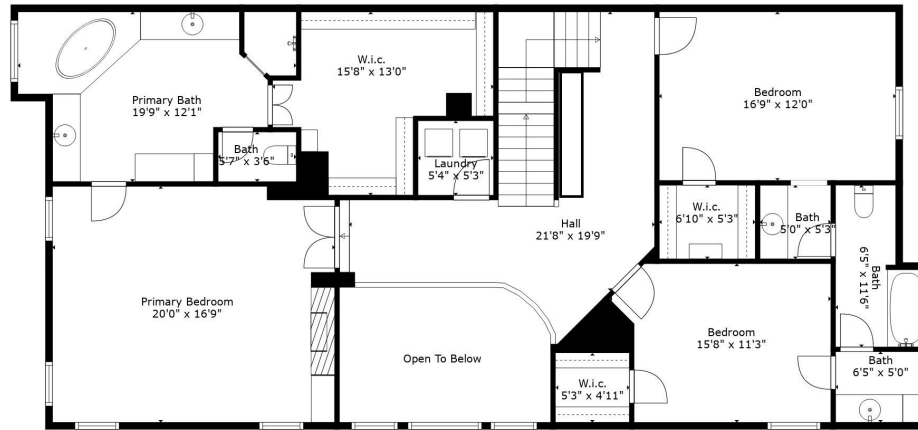
GROSS INTERNAL AREA
 FLOOR 1: 1297 sq. ft, FLOOR 2: 1601 sq. ft, FLOOR 3: 536 sq. ft
 EXCLUDED AREAS: GARAGE: 415 sq. ft, PATIO: 733 sq. ft, OPEN TO BELOW: 139 sq. ft
 TOTAL: 3434 sq. ft



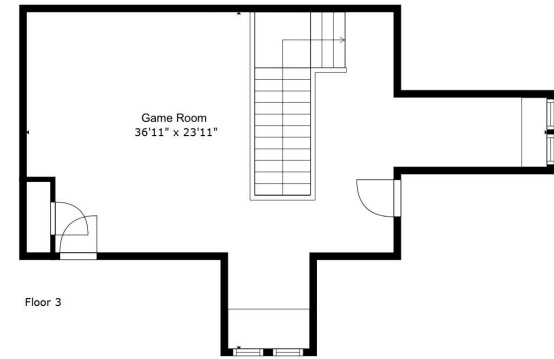
Game Room
36'11" x 23'11"

GROSS INTERNAL AREA
FLOOR 1: 1297 sq. ft, FLOOR 2: 1601 sq. ft, FLOOR 3: 536 sq. ft
EXCLUDED AREAS: GARAGE: 415 sq. ft, PATIO: 733 sq. ft, OPEN TO BELOW: 139 sq. ft
TOTAL: 3434 sq. ft

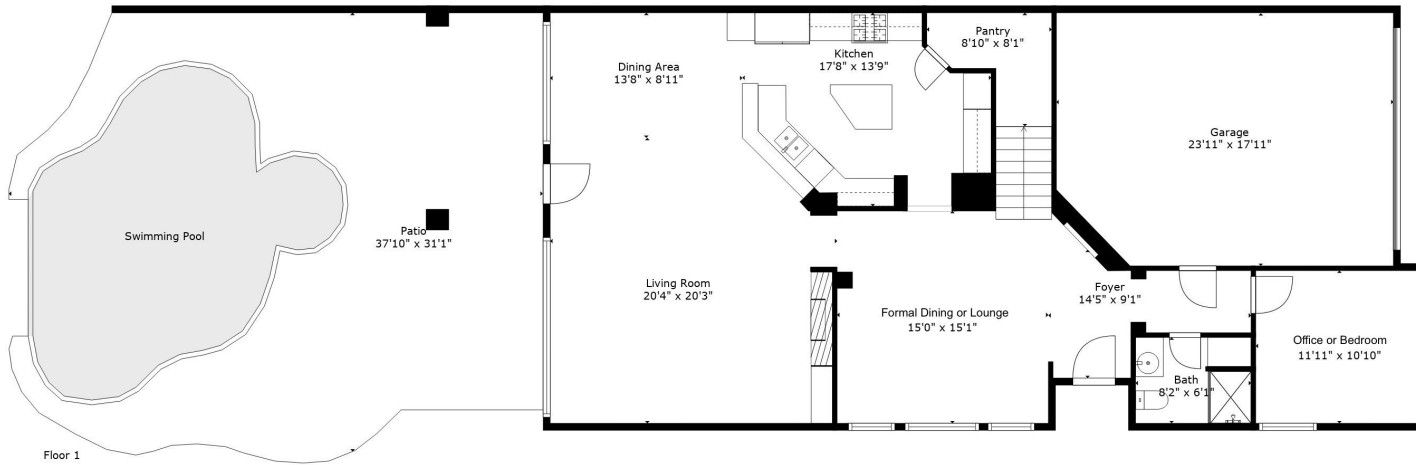
Floor plan is intended for marketing purposes and is to be used as a guide only to give a general indication of the layout. The floor plan contained here, measurements of rooms, square footage and any other items are approximate and is not binding. No responsibility is taken for any error, omission, or misstatement.



Floor 2



Floor 3



Floor 1

GROSS INTERNAL AREA
 FLOOR 1: 1297 sq. ft, FLOOR 2: 1601 sq. ft, FLOOR 3: 536 sq. ft
 EXCLUDED AREAS: GARAGE: 415 sq. ft, PATIO: 733 sq. ft, OPEN TO BELOW: 139 sq. ft
 TOTAL: 3434 sq. ft