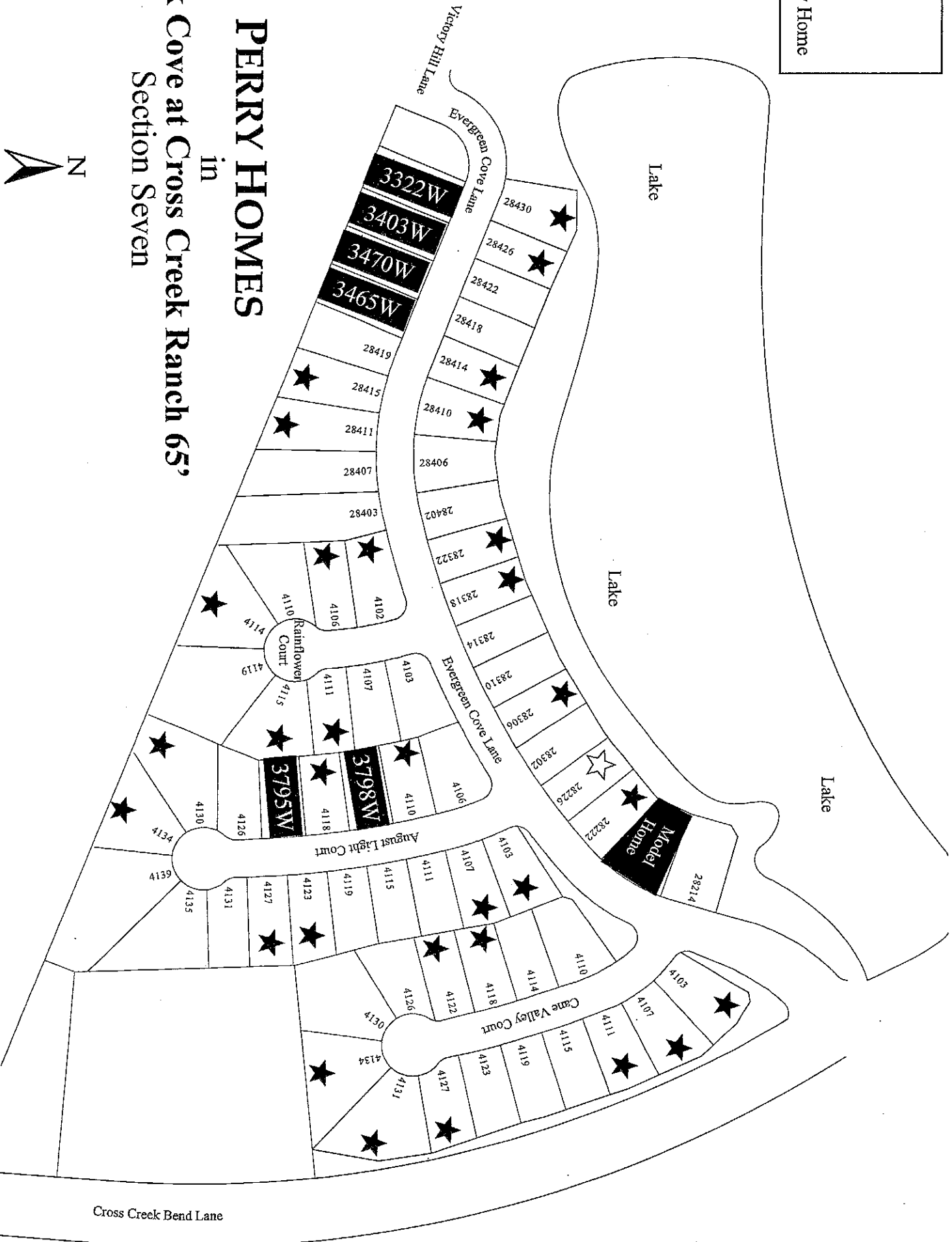


☆	Available Homesites
★	Sold Homesites
\$K	Homesite Premium
<b>1234W</b>	Design # of Inventory Home



**PERRY HOMES**  
in  
**Creek Cove at Cross Creek Ranch 65**  
Section Seven

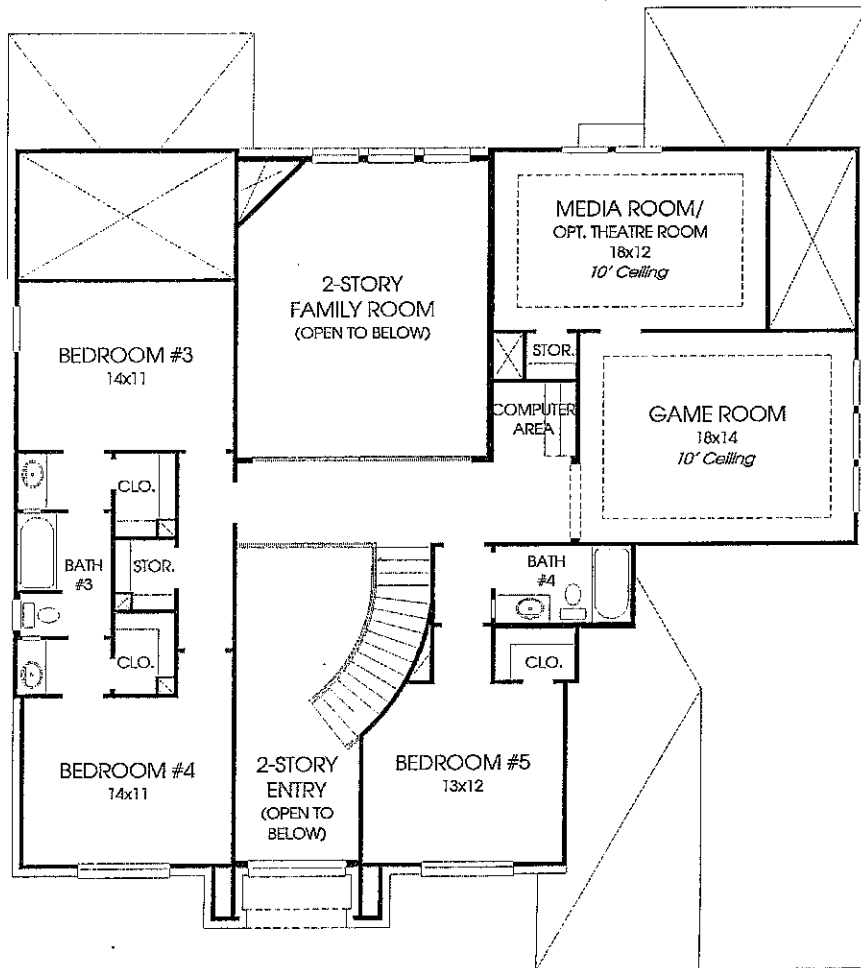
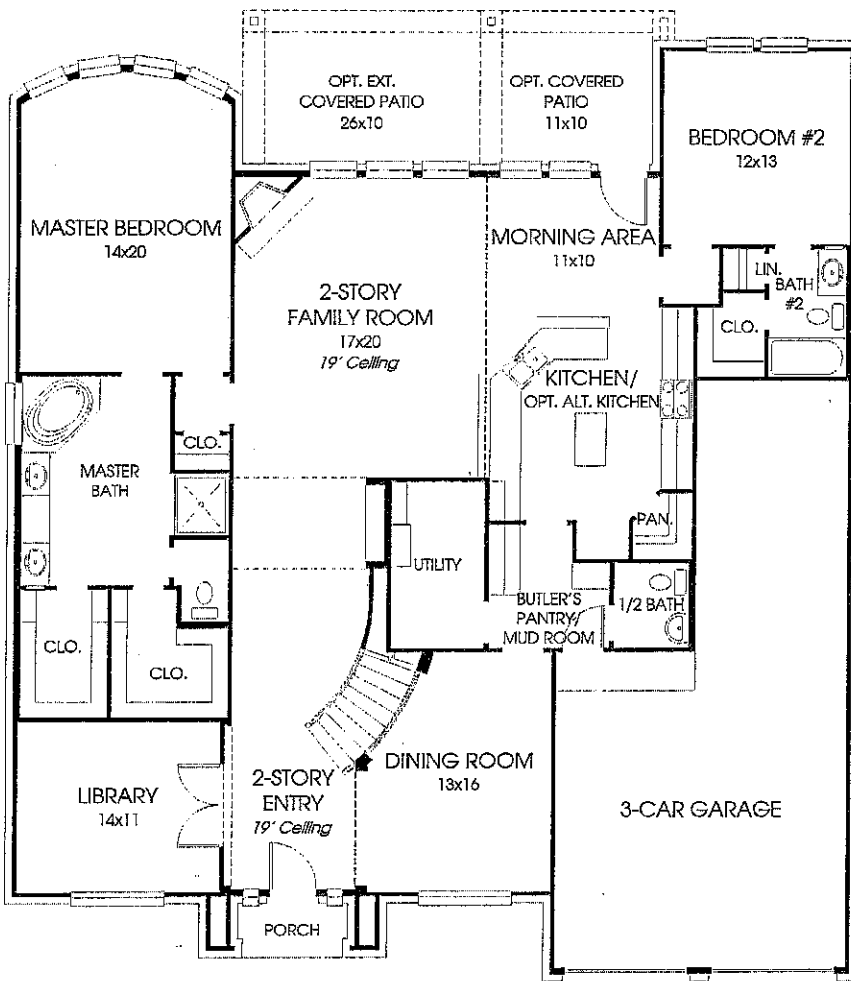


*Plans, pricing and availability are subject to change without notice. 10/6/2017*

# DESIGNS

## Design 3798W

This home contains approximately 3,798 square feet.\*



\*See Page 3 for Details and Disclaimers.  
© Perry Homes, LLC 2016

03/03/2016  
(65' CL)

# PERRY HOMES



## CROSS CREEK RANCH 65' INCLUDED FEATURES

### QUALITY ASSURANCE

- Two year Workmanship Limited Warranty, Ten year Structural Limited Warranty.
- Professionally engineered post-tension foundations inspected at three stages of the foundation process.
- Engineered structural framing inspected and certified on every home.
- Third party quality inspections performed by Burgess Construction Consultants on each home prior to sheetrock and at final stage of construction.
- Third party Home Energy Raters conduct onsite testing and inspections to verify the energy efficiency measures, as well as insulation, air tightness, and duct sealing details on every home.
- Inspections performed by an experienced construction staff at various stages of the construction process.
- All homes are engineered and inspected to meet the wind speed requirements of the International Residential Code.

### ENERGY EFFICIENCY

- Designated RESNET Energy Smart Builder with up to 30% or more improvement in energy efficiency over the HERS® reference home. For more information, please visit [www.resnet.us](http://www.resnet.us).\*
- TechShield® radiant barrier sheathing reduces radiant heat from radiating into the attic (not on detached garages).
- High-efficiency 16.0 SEER Carrier air conditioning system with environmentally-sound Puron® Refrigerant.
- ENERGY STAR® labeled GE dishwasher is more energy efficient than non-ENERGY STAR® models.
- High-efficiency insulated low-E glass vinyl windows to reduce ultraviolet transmission.
- Energy saving LED light bulbs installed throughout the home.\*\*
- Commodes use 1.28 gallons per flush for water conservation.
- Programmable thermostat.
- Fresh Air Intake System for improved indoor air quality.
- Smoke and carbon monoxide detectors.
- ENERGY STAR® rated reversible ceiling fans with nickel or bronze finish in family room and master bedroom.
- Energy efficient Rheem water heater with eco-friendly burner that reduces nitrogen oxide emissions.
- Polycel sealant around all windows, doors, pipes, wiring holes, and exterior base plates for improved energy efficiency and comfort.
- Greenguard certified R-13 batt insulation in walls and R-30 blown insulation in all flat ceilings.
- PEX plumbing system installed for water quality and energy efficiency.
- HardieBacker Cement Board with Moldblock Technology installed in all showers.

### EXTERIOR FINISHES

- 100% brick on first floor
- Brick front porch with decorative coach lights
- Fiber cement siding and soffit with a 25-year limited transferable manufacturer's warranty (varies per design).
- Lifetime limited warranty architectural shingles – nailed, not stapled.
- Insulated and pinch resistant Wayne Dalton garage doors.
- Garage door openers.
- Stained mahogany front door with leaded glass inserts.

### EXTERIOR FINISHES (CONTINUED)

- Kwikset door hardware with Venetian Bronze or Satin Nickel finish.
- Beautifully designed front yard landscape package with fully sodded front and back yard.
- Cedar three-rail fence and gate.

### INTERIOR FINISHES

- Modern rocker light switches.
- Blocked and pre-wired for ceiling fans in secondary bedrooms and game room (varies per design).
- Structured wiring package with CAT5e phone or ethernet wiring and RG6 cable TV wiring.
- Phone or ethernet outlets in all secondary bedrooms.
- Second story subflooring, 3/4" tongue and groove, glued and screw shank nailed for smoother floors.
- Raised square or arch paneled or rectangular five-panel interior doors with nickel or bronze door knobs.
- Remote controlled direct vent fireplace with gas logs, cast stone mantel and surround.
- Wrought iron balusters on staircase (varies per design).
- Powder room has nickel or bronze Delta faucet, pedestal sink, and mirror with beveled edges (varies per design).
- Granite countertops with undermount porcelain sinks in all secondary baths.
- Utility room with cabinet, clothes rod and shelf.
- Ceramic tile flooring in extended entry, powder room, utility room, and secondary baths (varies per design).
- Nickel or bronze decorative light fixtures.
- Luxurious carpet.
- Large 5" baseboards throughout the home and attached garage.

### KITCHEN

- Painted or stained distinctive 42-inch cabinets with decorative corners, full extension drawer guides, and raised or shaker panel doors.
- Granite countertops with ceramic tile backsplash.
- GE gas cooktop with 30" self-cleaning oven with stainless steel finish.
- GE built-in microwave with stainless steel finish.
- GE ENERGY STAR® labeled dishwasher with stainless steel finish.
- Undermount stainless steel sink with pull-down Delta faucet.
- Ceramic tile flooring in kitchen/morning area.

### MASTER BATH

- Granite countertops with undermount porcelain sinks.
- Built-in garden tub with ceramic tile surround.
- Separate glass enclosed shower with ceramic tile surround and floor.
- Ceramic tile flooring in master bath and commode room.
- Delta faucets with Roman tub faucet on garden tub.
- Master bath mirror with beveled accents.

### DESIGN CENTER

- Four (4) hours of complimentary design service to complete your selections

\*Energy use and costs for all Perry Homes will vary based on a variety of factors such as home type, plan options, features, usage, orientation, site, utility rates, climate and operation of the home.

\*\*Available on homes started after June 1, 2017.

All trademarks, product names, brands and logos remain property of their respective holders, and are used only to directly describe the products offered. Their use in no way indicates any relationship, endorsement, or sponsorship between Perry Homes and the holders of said trademarks. Plan pricing, elevations and features are subject to change without notice. Room dimensions and square footage are approximate and may change with selected options. Please contact Perry Homes or see your Sales Professional for more details.

