

5003 LEAFY HOLLOW COURT

FEATURES

GENERAL DESCRIPTION

City Houston
Zip Code 77018
Square Ft. 2,511/Appraisal District
Year Built 1963/Appraisal District
Lot Size 9,525/Appraisal District
Garage 2 Car Detached
Bedrooms 3
Bathrooms 2 Full
Tax Rate 2.2019/2022
School District Houston ISD

ROOM DIMENSIONS

Living Room 24 x 19
Den 19 x 14
Dining Room 14 x 13
Kitchen 16 x 16
Breakfast 13 x 11
Primary Bedroom 19 x 15
Bedroom 2 13 x 12
Bedroom 3 13 x 12

INTERIOR FEATURES

Fireplace Yes
Oven Electric
Range Gas Cooktop
Countertops Granite
Microwave Yes
Dishwasher Yes
A/C Central Electric
Heat Central Gas

EXTERIOR FEATURES

Roof Composition
Foundation Slab
Exterior Brick
Patio/Deck Yes
Mosquito Control System

MLS# 79347499



Exclusively Marketed by
BRAD FLEMING
REALTOR®

713.240.6200
brad@flemingteam.com
garygreene.com

**Better
Homes
and Gardens.**
REAL ESTATE

**GARY
GREENE**

©2022 Better Homes and Gardens Real Estate LLC. Better Homes and Gardens® is a registered trademark of Meredith Corporation licensed to Better Homes and Gardens Real Estate LLC. Equal Opportunity Company. Equal Housing Opportunity. Each Franchise is Independently Owned and Operated. If your property is currently listed with a real estate broker, please disregard. It is not our intention to solicit the offerings of other real estate brokers.

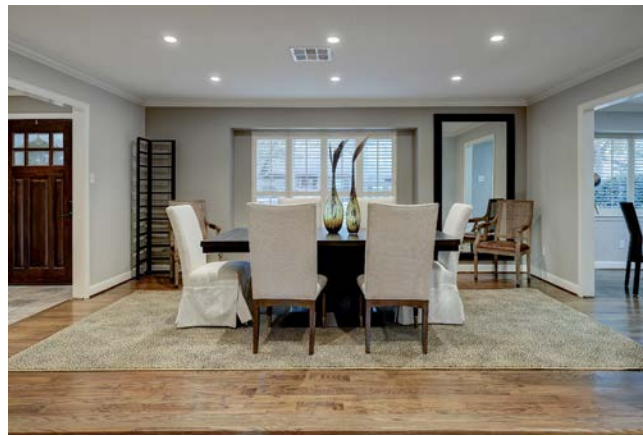


5003 LEAFY HOLLOW COURT | CANDLELIGHT ESTATES

Marketed Exclusively by Brad Fleming

5003 LEAFY HOLLOW COURT Candlelight Estates

Fabulous Custom Home in the heart of Candlelight Estates. Just a short distance to many restaurants, great shopping, bakery and coffee houses, live music and family friendly Parks. Spectacular floorplan and great for entertaining. Gorgeous hardwood floor, plantation shutters, custom fixtures, and designer elements. Gourmet kitchen which offers granite countertops, breakfast bar, stainless Viking appliances and custom cabinets. Large primary bedroom! Spacious primary bathroom and two generous custom closets. Enjoy the peaceful outdoor living areas featuring a 1,300 sqft deck, mature trees, mosquito misting system, TV and Klipsch Sound System. Some other features include: updated windows, AV 5.1 sound systems, LED lighting inside and out, keyless entry, tankless water heater, exterior camera system, WIFI sprinkler system, and new roof. The home is a rare jewel in a great location!



Family Room | Entryway | Formal Dining Room | Study



Den | Kitchen | Open Floorplan | Primary Bedroom | Primary Closet | Secondary Bedroom