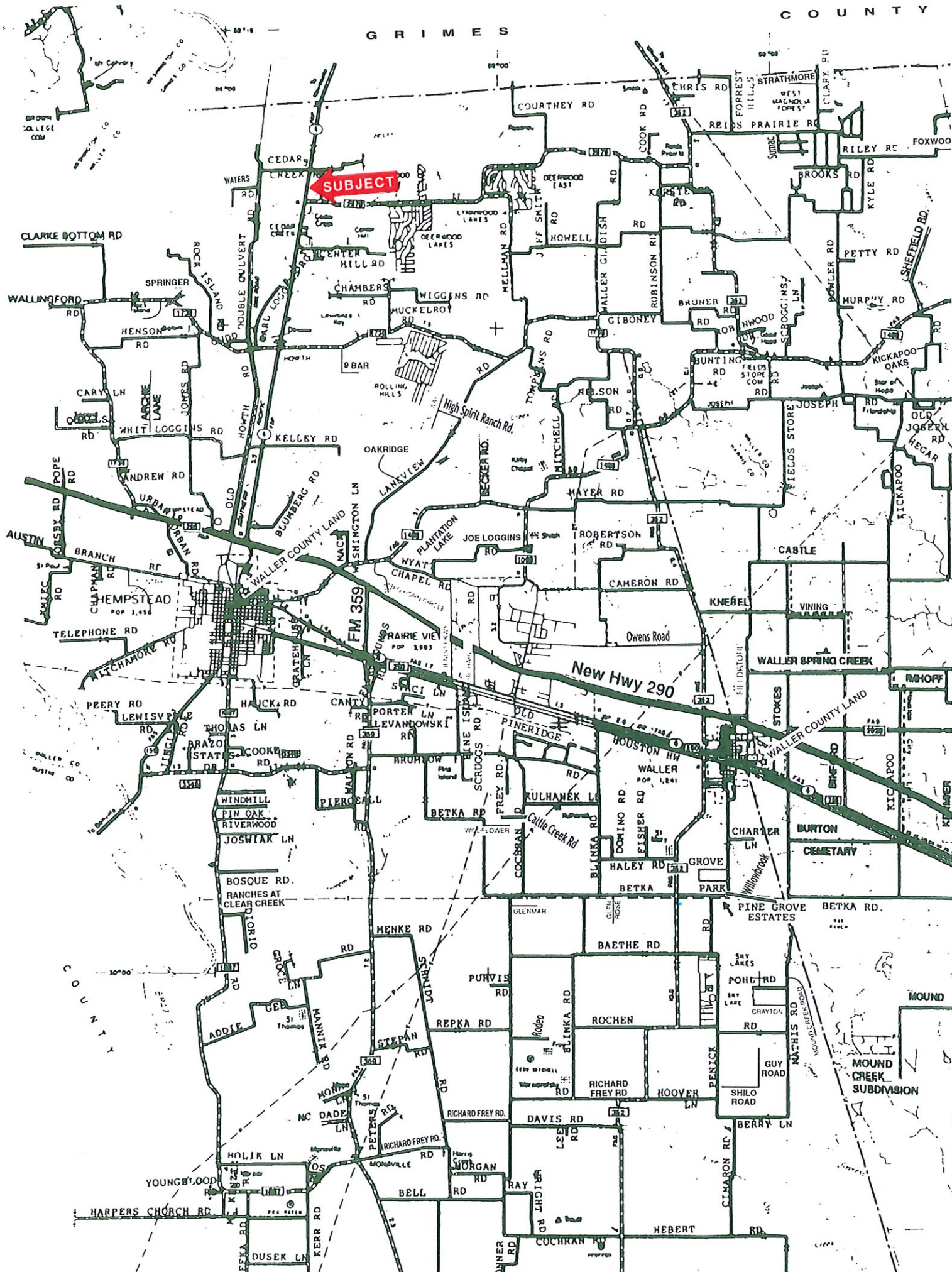


GRIMES

COUNTY



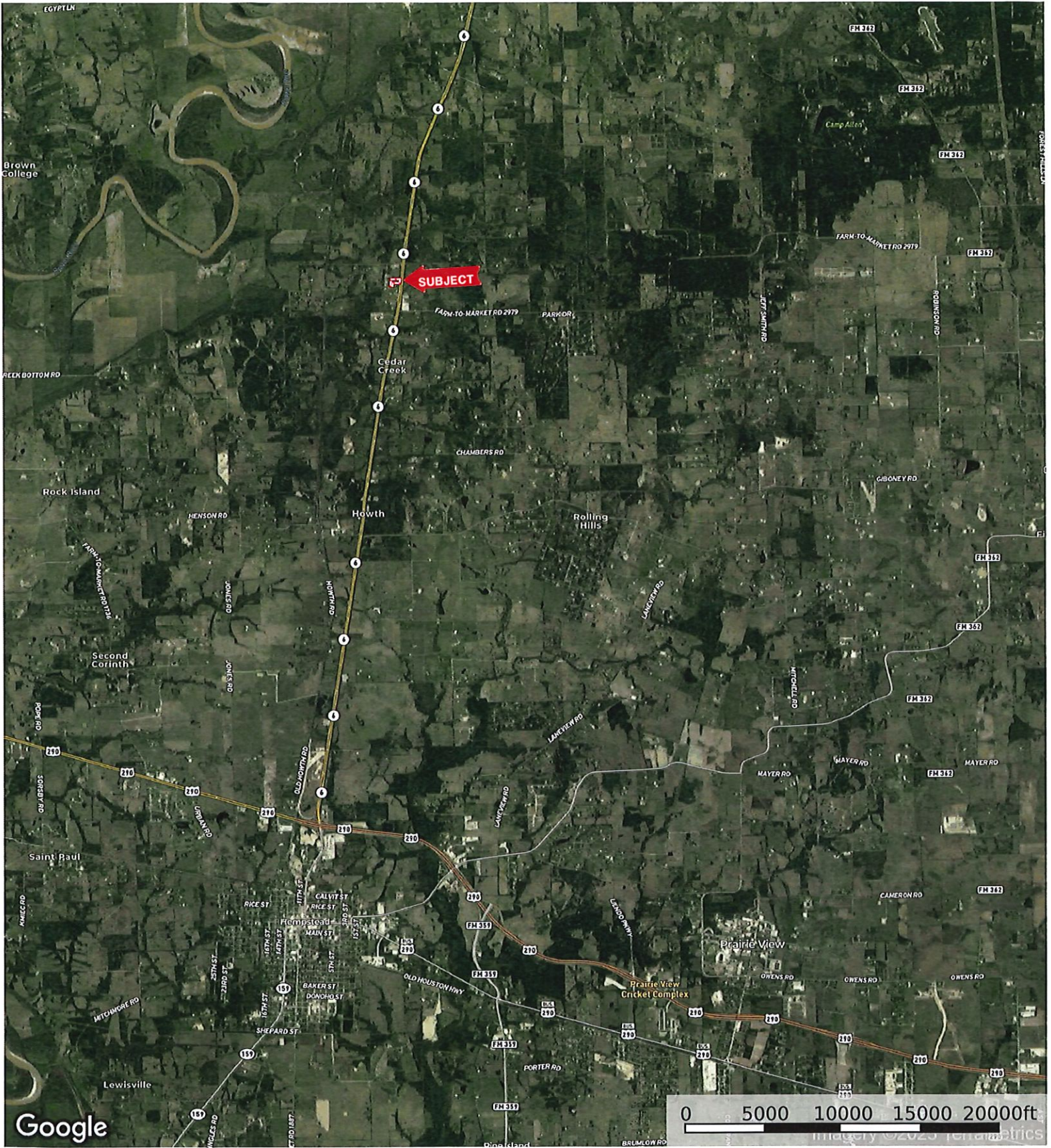
SUBJECT

New Hwy 290

FM 359

MOUND CREEK SUBDIVISION

29645 N. Hwy 6
Waller County, Texas, AC +/-



Boundary

Timothy Phelan
P: (936) 372-9181

WallerCountyLand.com

P.O. Box 1274, Waller, Texas 77484

id. The information contained herein was obtained from sources deemed to be reliable. Land id™ Services makes no warranties or guarantees as to the completeness or accuracy thereof.

29645 N. Hwy 6
Waller County, Texas, AC +/-




Google ©2023 Houston-Galveston Area Council, Maxar Technologies, Texas General Land Office, U.S. Geological Survey

 Boundary

Timothy Phelan
P: (936) 372-9181

WallerCountyLand.com

P.O. Box 1274, Waller, Texas 77484

 The information contained herein was obtained from sources deemed to be reliable. Land id™ Services makes no warranties or guarantees as to the completeness or accuracy thereof.

29645 N. Hwy 6
Waller County, Texas, AC +/-



- Boundary
- 100 Year Floodplain
- 500 Year Floodplain
- Floodway
- Special
- Unmapped/ Not Included

Timothy Phelan

P: (936) 372-9181

WallerCountyLand.com

P.O. Box 1274, Waller, Texas 77484



The information contained herein was obtained from sources deemed to be reliable. Land id™ Services makes no warranties or guarantees as to the completeness or accuracy thereof.