



KB HOME LONE STAR INC., a Texas corporation
 11314 Richmond Avenue,
 Houston, TX, 77082
 (281) 668-3916

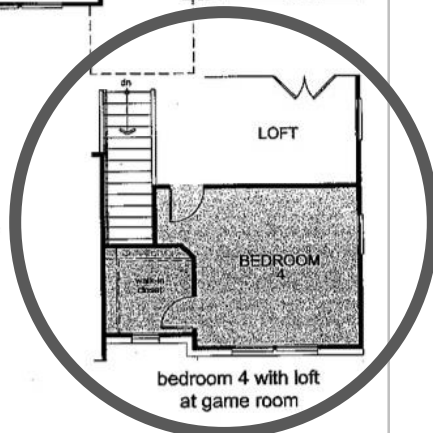
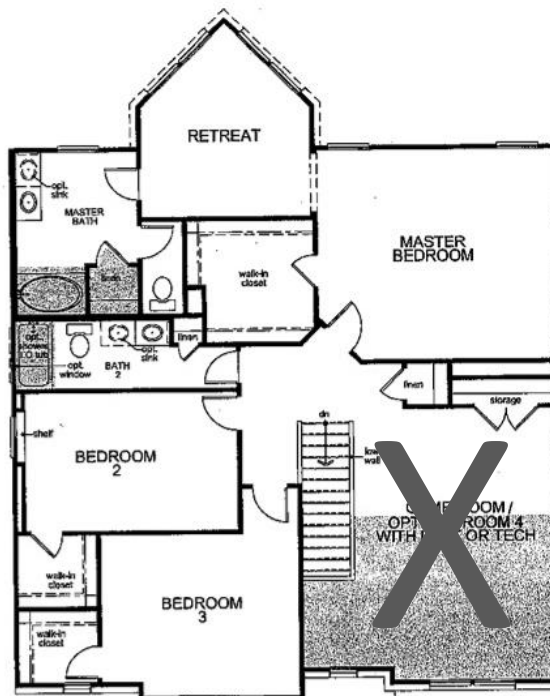
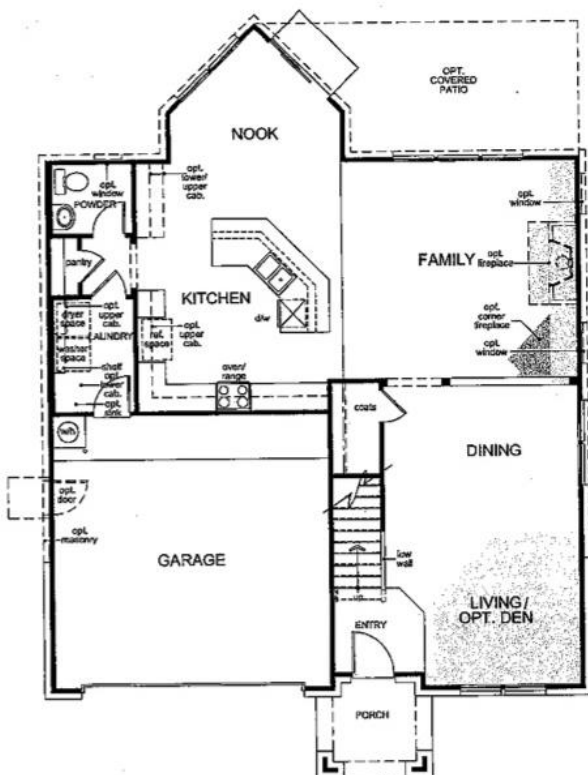
SUPPLEMENTAL DISCLOSURE

First Floor Options

- Kitchen: • Breakfast bar island. Upgrade kitchen
- Nook: • Atrium door ILO sliding glass door, Door with window ILO sliding glass door
- Family: • Covered patio
- Den: • Double doors
- Laundry: • Lower and upper cabinets, Sink

Second Floor Options

- Master Bath: • Vanity with dual sinks, 42" garden tub, Shower ILO of tub, Separate tub and shower with low wall, Medicine cabinet
- Bath 2: • Extended vanity with knee space, Extended vanity with dual sinks, Shower ILO tub, Medicine cabinet
- Game Room: • Bedroom 4 with loft, Bedroom 4 with tech
- Windows: • Optional per plan
- Ceilings: • Volume, tray & coffered per plan



Handwritten signatures and initials.



Your new KB home can be built to order so you'll enjoy the features you want most. Plus you can choose from a variety of personalizing interior features and details at KB Home Studio. Select appliances, cabinets, countertops, lighting, flooring, and more. Everything you need to create a home as unique as you.

© 2012 KB Home. All rights reserved. KB Home reserves the right to change floor plan specifications, prices, financing, terms and availability without prior notice and may vary by neighborhood, home location and home series. Special wall and window treatments, custom paint colors, photographs, upgraded floor coverings, furniture, landscaping, custom designed walks and patio treatments and many other items featured in and around the model homes are decorator suggested, are not included in the purchase price and are not available for purchase from KB Home. Windows, columns, porches and patios may vary per elevation and predetermined home. Readings and floor plans are artist conceptions; square footage is approximate and based upon design area may vary according to construction; landscaping shown is not standard. See Built to Order™ options and upgrades offered at KB Home Studio. All options/upgrades require additional charges, may require ordering at predetermined stages of construction and are subject to change/discontinuation anytime by KB Home. KB Home is not a custom homebuilder and Built to Order™ only applies to options referenced. See sales representative for details. Equal Housing Opportunity. Truskey at Vineyard Meadow (SP1) Plan 239.2812 - 06/28/12

Tuscany at Vineyard Meadow- Included Features



Energy Conservation

- Energy Star 3.0 Certified Home
- R-15 Exterior Wall Fiberglass Insulation
- R-19 Ceiling Fiberglass Insulation- Slope Ceiling
- R-38 Ceiling Fiberglass Insulation- Flat Ceiling
- Energy Efficient Gas Water Heater- size per plan
- High Efficiency **14-SEER Carrier** HVAC WITH Digital Thermostat
- R-6 Insulated Air Conditioning Duct Work
- Radiant Barrier – **Tech Shield**
- **Upgraded Polycel** Sealant Around All Windows, Doors and Exterior Walls
- Efficient Toilets & Shower Heads
- **Double Pane High Performance** Low E Windows to Increase Energy Efficiency
- Complies with the International Residential Code and exceeds the International Energy Conservation Code
- Energy Star Appliances

Exterior Construction

- ACME Clay Brick on Front (Per Plan and Elevation; 8 colors available)
- **Cemplank** Fiber Cement Siding (A James **Hardie** Building Product)
- **Hardie** Ventilated Soffit
- **Hardiplank** Fiber Cement Fascia
- **Louisiana-Pacific** Smart Trim on Window and Corner Trim
- Structural Engineered Post-Tension Foundation
- Engineered Panelized Wall Systems to Assure Sound Construction, Plumbness, Squareness and Structural Integrity
- Perfectly Engineered Trusses for Maximum Strength
- 25 Year Warranty 3-Tab Shingles
- Durable **Thermosheath** Sheathing in Brick Areas
- Elegant Six Panel Fiberglass Front Door- Painted
- Rear 6'-8" door with 3' x 3' concrete stoop
- Double Pane High Performance; 1/1 Front, Side and Rear Windows White or Beige Finish with Low E Glass
- Screens on All Operable Windows
- Three-Tone Exterior Paint- **Sherwin Williams** Pure Acrylic Primer with Latex Satin Top Coat
- Durable Concrete Walks and Drives
- **Address Numbers**-Ceramic Tile on Masonry Front and 4" Black Numbers on Siding Fronts
- Side and Rear Exterior Water Faucets
- Front and Rear GFCI Outdoor Electrical Outlets
- Sealed Roof Penetration

Safety/Security

- **Kwikset Tylo** Key Entry Knob with Deadbolt Lock in Satin Chrome Finish
- Doorbell
- Peephole
- Responsive Smoke Detectors with Battery Back-Ups
- Reinforced Steel Raised Panel Garage Door
- Ground Fault Interrupter (GFCI) & Arc Fault Protection
- Exterior Lighting at Front and Rear Doors
- Fully Enclosed 6-Foot Tall Backyard Fence
- Fence to Start at Rear Corners of Home with One Gate on Garage Side
- 4 ft. Public Sidewalks

KB Home Advantage

- 10 Year KB Home Limited Warranty
- **"Sewer Cam"** Video Inspection of Sewer Lines by Independent Inspector
- Four Strategic Point Inspections Conducted Throughout the Construction Process by Independent, Registered Engineers and FHA Inspectors
- **HomeTeam** Pest Defense Tubes in the Wall (Service not Included)
- Toll-Free 24-hour Customer Care Line
- Professional Design Assistance at KB Home Studio
- Internationally Recognized Builder Listed on the NYSE

Interior Construction

- Elegant Wood Grain Flush Panel Interiors Doors
- **Kwikset Tylo** Knobs in Satin Chrome Finish
- 3 1/4" Colonial Baseboards and 2" Door Casings
- Daytona 13"x13" tile in Entryway
- Powder Bath (per plan)
- Stairs Feature Half Wall with 1" x 8" Painted Cap
- **Shaw** Wall-to Wall Carpeting with 3/8" Carpet Pad (Level A)
- **Armstrong** Vinyl Flooring in Kitchen/Breakfast, Laundry, Master Bath, Secondary Baths(Level A)
- Telephone Jack in Kitchen and One Additional Room
- Cable TV Outlet in Main Living Area and One Additional Room
- Zero VOC Flat Latex Walls and Ceilings in **Sherwin Williams** Swiss Coffee
- Zero VOC Gloss Trim and Moldings in **Sherwin Williams** Swiss Coffee
- Eight Foot Ceilings Throughout
- MDF Wood Shelving in All Closets
- Garage Walls and Ceiling Fully Sheet Rocked and Painted
- Garage – Prewired for Garage Door Opener
- Washer and Electric Dryer connections in Laundry Rooms
- Ceiling Light and Fan Pre-Wire in Bedrooms, Main Living Area and Game Room
- R-10 Insulation Scuttle Door

Kitchen Appointments

- **30" Quality SeaCrest Oak Cabinets in 2 Finishes and 30" Quality SeaCrest Birch Cabinets in 4 Finishes**
- Pre-Plumb for Icemaker Line
- 1/3 HP Garbage Disposal
- 5 – 12" Shelves in Pantry and Linen
- Dual-Compartment Stainless Steel Sink
- Single Handle Chrome Finish **Moen** Faucet
- **Wilsonart** Laminate Square Edge Countertops with 4" Block Backsplash
- **Whirlpool** Free-Standing Gas Range in White or Black
- **Whirlpool** Large Capacity 5-Cycle Dishwasher in White or Black
- **Whirlpool** Venthood – Exterior Exhaust at Range in White or Black
- Recessed Can Light in Breakfast Nook (per plan)

Master Bathroom Appointments

- 36" x 60" Sterling Ensemble Vikrell Tub with Daytona 13" x 13" tile surround
- Pressure Balancing Shower Valves
- Marble Countertops with Ogee Edge and 4" Backsplash
- Integrated Cultured Marble Vanity Bowls (Two per vanity area)
- Elongated Toilet
- Chrome Hardware and Chrome Finish **Moen** Faucet with Acrylic Knobs
- **Quality SeaCrest Cabinets- Same finishes available as Kitchen**
- Energy Star Ventilation Fan

Secondary Bathroom Appointments

- 30" x 60" Sterling All-Pro Vikrell Tub with Daytona 13" x 13" tile surround
- Extended Vanity with Kneespace (per plan)
- Pressure Balancing Shower Valves
- Marble Countertops with Ogee Edge and 4" Backsplash
- Integrated Cultured Marble Vanity Bowls (One per vanity area)
- Chrome Hardware and Chrome Finish **Moen** Faucet with Acrylic Knobs
- **Quality SeaCrest Cabinets- Same finishes available as Kitchen**
- Energy Star Ventilation Fan

Landscaping

- Fully Sodded Front and Side Yards to Fence
- Professionally Designed Landscape Front Yard
- Assorted Shrubs per plan

Rev January 26, 2014

2013 KBHome. All rights reserved. Khome reserves the right to change floorplan specifications, prices, financing terms and availability without prior notice and may vary by neighborhood, homesite location and home series. Special wall and window treatments, custom paint colors, photographs, upgraded floor coverings, furniture, landscaping, custom designed walks and patio treatments and many other items featured in and around the model homes are decorator suggested, and are not included in the purchase price and are not available for purchase from KB Home. Windows, columns, porches and posts may vary per elevation and predetermined homesite. Renderings and floor plans are artist conception; square footage is approximate and based upon design; area may vary according to construction; landscaping shown is not standard. See Built to Order options and upgrades offered at KB Home Studio. All options/ upgrades require additional charges, may require ordering at predetermined stages of construction and are subject to change/ discontinuation anytime by KB Home. KB Home is not a costume homebuilder and Built to Order only applies to options referenced. See sales representative for details. Equal Housing Opportunity.

