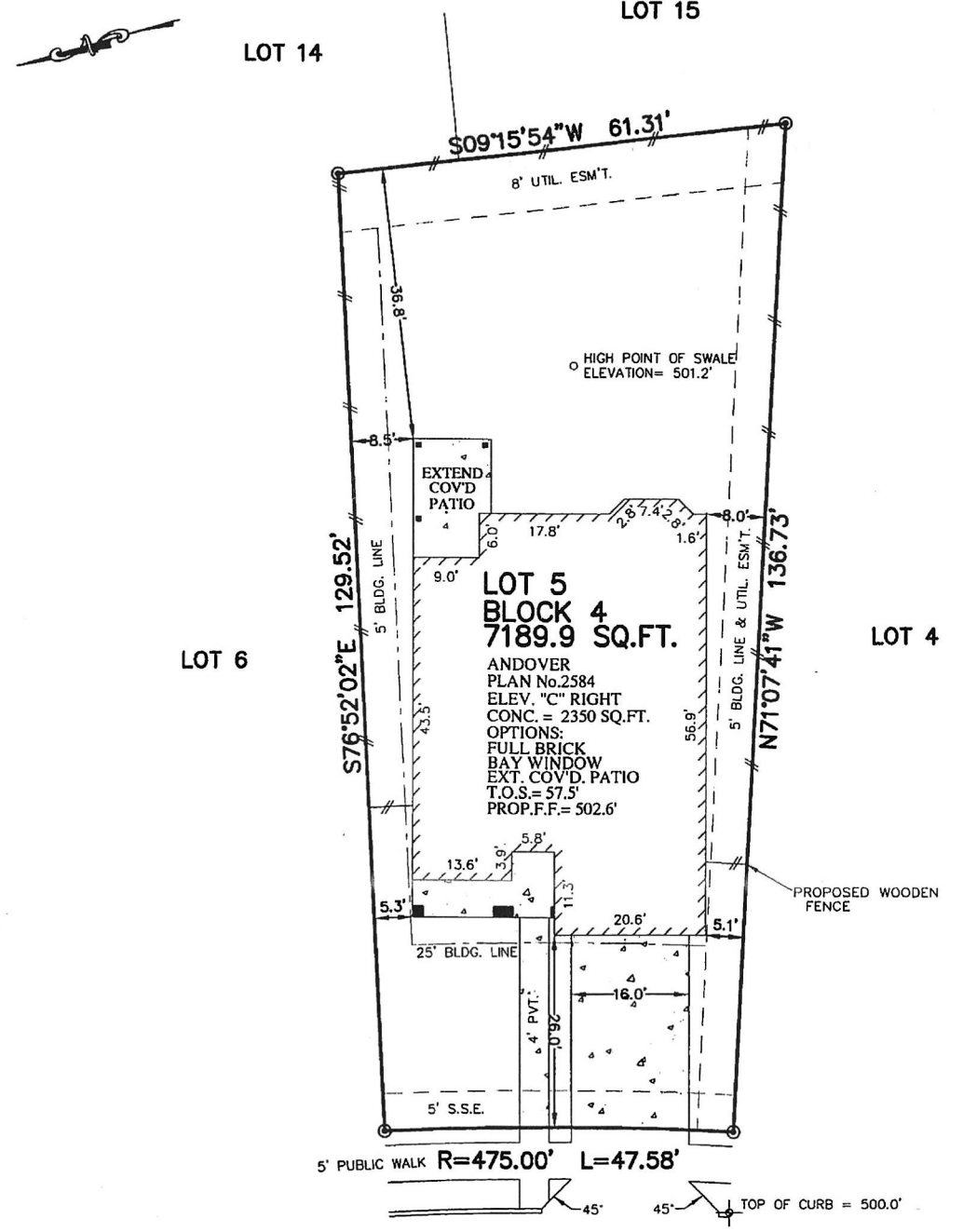


2584.
7189.



2518 RIVER RIDGE
(50' R.O.W.)
28' CONCRETE PAVEMENT


- NOTES:
1. ALL BEARINGS SHOWN HEREON ARE BASED ON THE RECORDED PLAT.
 2. THIS PLOT PLAN WAS PREPARED WITHOUT BENEFIT OF A TITLE REPORT. THERE MAY BE EASEMENTS, BUILDING LINES & OTHER MATTERS OF RECORD NOT SHOWN HEREON. SURVEYOR OR ALLPOINTS SERVICES CORP. IS NOT LIABLE FOR ANY DAMAGES THAT MAY INCUR IN ANY EVENT THE BUILDER BUILDS ANY IMPROVEMENTS CLOSER THAN 5.0' OR WITHIN AN EASEMENT.

PLOT PLAN
SCALE: 1 = 20'

APPROX. LOT COVERAGE:	32.68%
FRONT SOD:	121 SQ. YD.
BACK SOD:	374 SQ. YD.
APPROX. SQ. FT. OF FLATWORK:	
4" PAVING:	711 SQ. FT.
INTURN:	207 SQ. FT.
A/C PAD:	16 SQ. FT.
FENCE:	LINEAR FT.
BACK:	61 FT.
LEFT:	86 FT.
RIGHT:	100 FT.
FRONT LT.	6 FT.
FRONT RT.	6 FT.

©2015, ALLPOINTS SERVICES CORP., ALL RIGHTS RESERVED

FOR: RYLAND HOMES
ADDRESS:
2518 RIVER RIDGE
ALLPOINTS JOB #: RH100231
G.F.: NH



ALLPOINTS
SERVICES CORP
PHONE: 713-468-7707
FAX: 713-827-1861

LOT 5, BLOCK 4,
SIENNA VILLAGE OF DESTREHAN, SECTION 3,
PLAT NO. 20150016, PLAT RECORDS,
FORT BEND COUNTY, TEXAS

**RYLAND
HOMES®**

ISSUE DATE: 6/16/2015