

# PINE FOREST ACRES

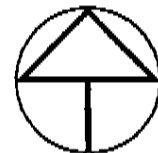
25 LOTS

5 RESERVES

LIVINGSTON LAKE

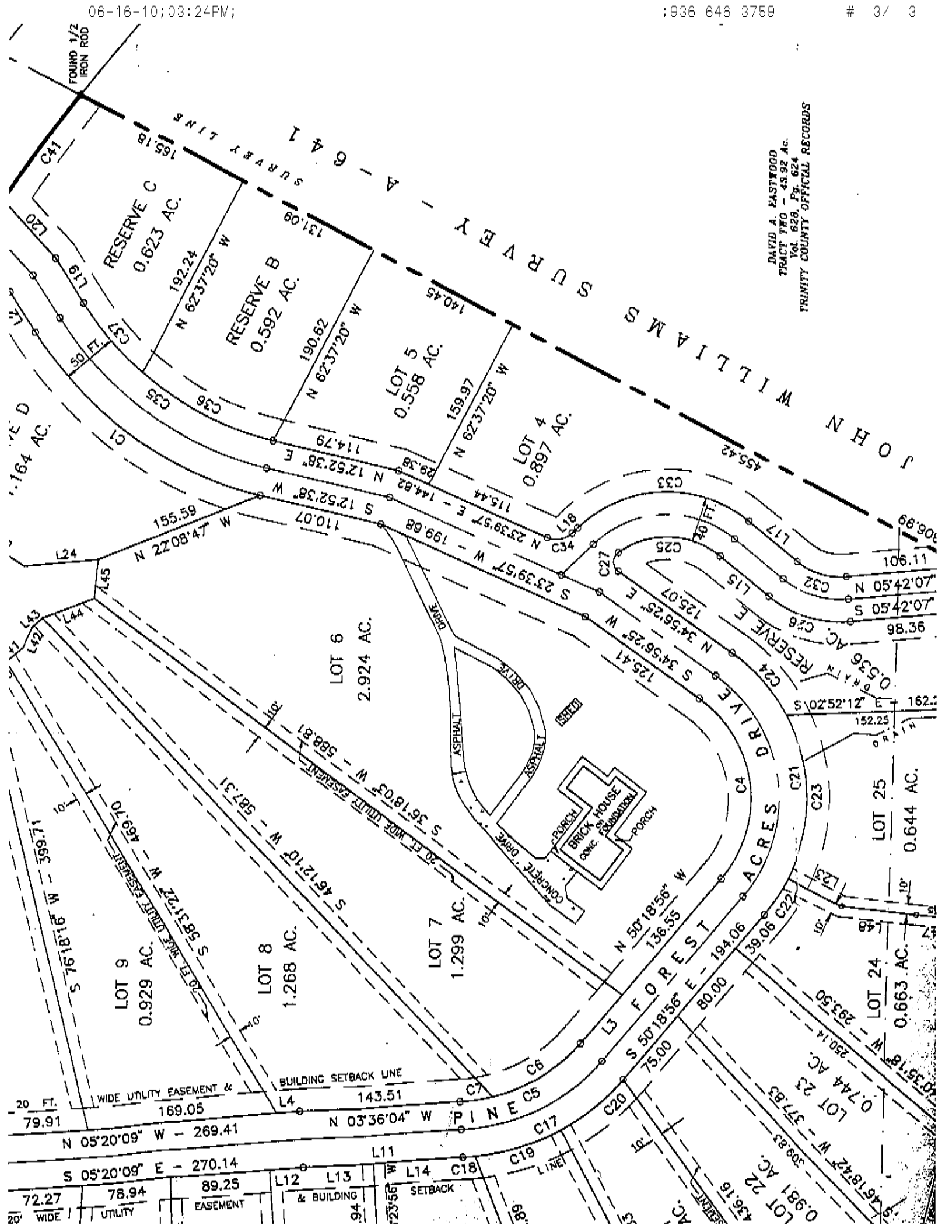
EDWARD TYLER SURVEY 4-691

RESERVE A LORILEY SURVEY LINE



NORTH





DAVID A. EASTWOOD  
 TRACT #10 -- 43.92 AC.  
 Vol. 620, Pg. 624  
 TRINITY COUNTY OFFICIAL RECORDS

JOHN WILLIAMS SURVEY - A - 6 4 1

RESERVE C  
 0.623 AC.  
 N 62°37'20" W  
 192.24

RESERVE B  
 0.592 AC.  
 N 62°37'20" W  
 190.62

LOT 5  
 0.558 AC.  
 N 62°37'20" W  
 159.97

LOT 4  
 0.897 AC.  
 N 62°37'20" W  
 140.45

LOT 6  
 2.924 AC.

LOT 7  
 1.299 AC.

LOT 8  
 1.268 AC.

LOT 9  
 0.929 AC.

LOT 25  
 0.644 AC.

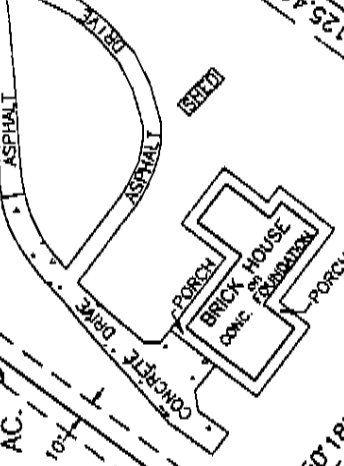
LOT 24  
 0.663 AC.

LOT 23  
 0.744 AC.

LOT 22  
 0.981 AC.

20 FT. WIDE UTILITY EASEMENT & BUILDING SETBACK  
 169.05  
 N 05°20'09" W - 269.41

72.27  
 20' WIDE UTILITY EASEMENT  
 78.94  
 89.25



FOREST ACRES DRIVE  
 N 50°18'56" W  
 136.55  
 S 45°18'05" W  
 75.00  
 S 80°00'00" W  
 194.06  
 S 39°06'00" W  
 39.06

20 FT. WIDE UTILITY EASEMENT  
 S 56°12'10" W - 469.70  
 S 56°12'10" W - 587.31  
 S 56°12'10" W - 588.81

20 FT. WIDE UTILITY EASEMENT  
 S 56°12'10" W - 469.70  
 S 56°12'10" W - 587.31  
 S 56°12'10" W - 588.81

FOUND 1/2 IRON ROD  
 C41  
 L20  
 L19  
 L18  
 L17  
 L16  
 L15  
 L14  
 L13  
 L12  
 L11  
 L10  
 L9  
 L8  
 L7  
 L6  
 L5  
 L4  
 L3  
 L2  
 L1