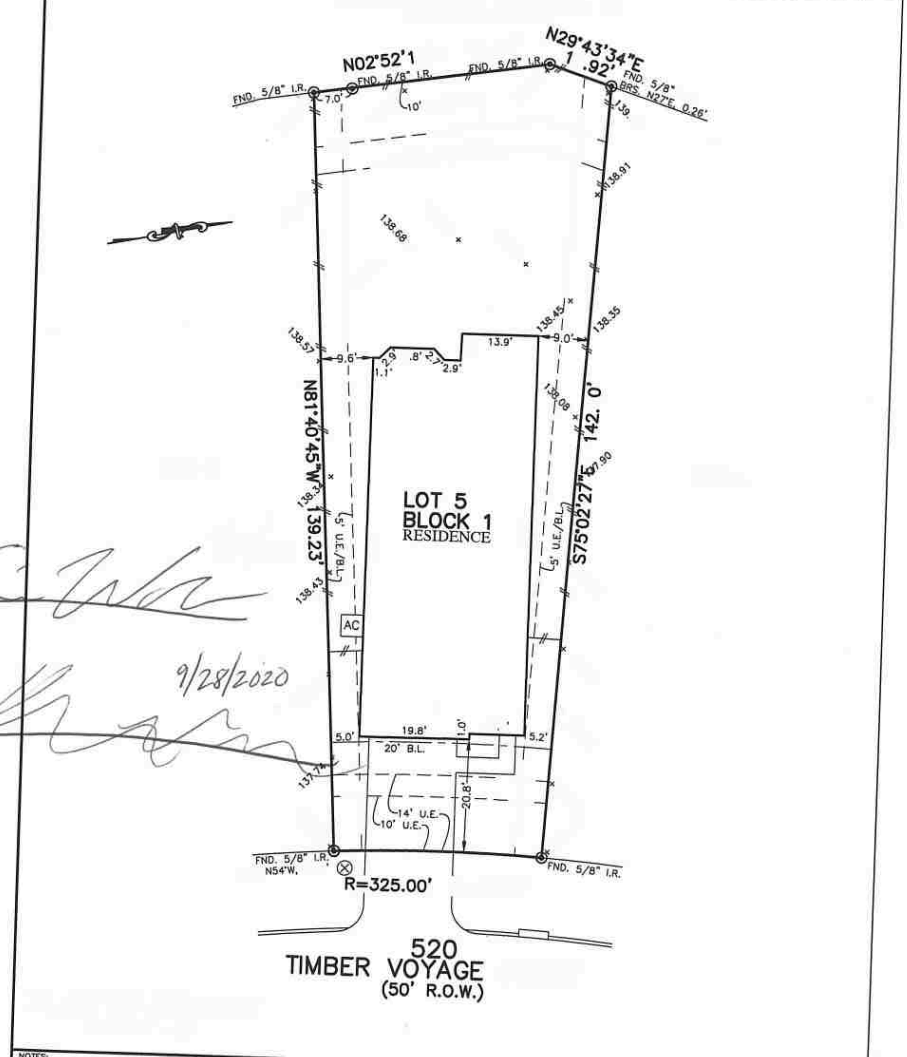


50

FLATWORK	B.L. BUILDING LINE	F.O.T. TOP OF FORM	U.V.E. UNDESTRUCTURED VISIBILITY EASEMENT
FRONT LOAD BUILDING	FRONT BUILDING LINE	UTILITY EASEMENT	M.A.C.C.E. MAINTENANCE & ACCESS EASEMENT
3 CAM BUILDING LINE	3 CAM BUILDING LINE	WATER LINE EASEMENT	A.C.C.E. ACCESS EASEMENT
BUILDING GUIDELINES	BUILDING LINE	STORM SEWER EASEMENT	A.E. AERIAL EASEMENT
EXT. EXTENDED	EXT. EXTENDED	SANITARY SEWER EASEMENT	D.E. DRAINAGE EASEMENT
CHAIN LINK FENCE	CHAIN LINK FENCE	RIGHT-OF-WAY	E.E. ELECTRIC EASEMENT
OVERHEAD ELECTRIC	OVERHEAD ELECTRIC	PRIVATE UTILITY EASEMENT	W.V. WATER VALVE
		PRIVATE UTILITY EASEMENT	F.I. FIRE HYDRANT
		PRIVATE UTILITY EASEMENT	M. MONUMENT
		PRIVATE UTILITY EASEMENT	W.M. WATER METER
		PRIVATE UTILITY EASEMENT	C.A. CITY ANCHORS
		PRIVATE UTILITY EASEMENT	P.M. PAD MOUNTED TRANSFORMER
		PRIVATE UTILITY EASEMENT	T. TELEPHONE
		PRIVATE UTILITY EASEMENT	G.M. GAS METER
		PRIVATE UTILITY EASEMENT	T.F. TABLE/FERRETTAL
		PRIVATE UTILITY EASEMENT	W.M. WATER METER
		PRIVATE UTILITY EASEMENT	C.I. CITY ANCHORS
		PRIVATE UTILITY EASEMENT	M. MANHOLE
		PRIVATE UTILITY EASEMENT	I. INLET
		PRIVATE UTILITY EASEMENT	V. VALVE

*K.E. W...*  
*K. K...*  
 9/28/2020



NOTES:  
 ALL BEARINGS SHOWN HEREON BASED ON THE LAST SURVEY OF THE SUBJECT PROPERTY.

LAK AND KRISTIN COURT  
 ALLPOINTS JOB#: G.F.:7712001483  
 JOB: 533-007  
 FLOOD ZONE: X/X SHADED

EFFECTIVE DATE: 8/18/2014  
 LOMR: 15-06-1222P DATE: 6/13/2016

THIS INFORMATION IS BASED ON GRAPHIC PLOTTING NOT ASSUME RESPONSIBILITY FOR EXACT DETERMINATION

LOT 5, BLOCK 1, GRAND CENTRAL PARK, SECTION 16, CAB. 2, SHT. 6191, MAP RECORDS, MONTGOMERY COUNTY, TEXAS

HEREBY CERTIFY THAT THIS SURVEY WAS MADE ON MAY 02, 2020.

STATE OF TEXAS REGISTERED PROFESSIONAL LAND SURVEYOR LAWRENCE W. BORSKI

©2020, ALLPOINTS LAND SURVEY, INC. ALL RIGHTS RESERVED.

ROAD - HOUSTON, TEXAS 713-468-7707