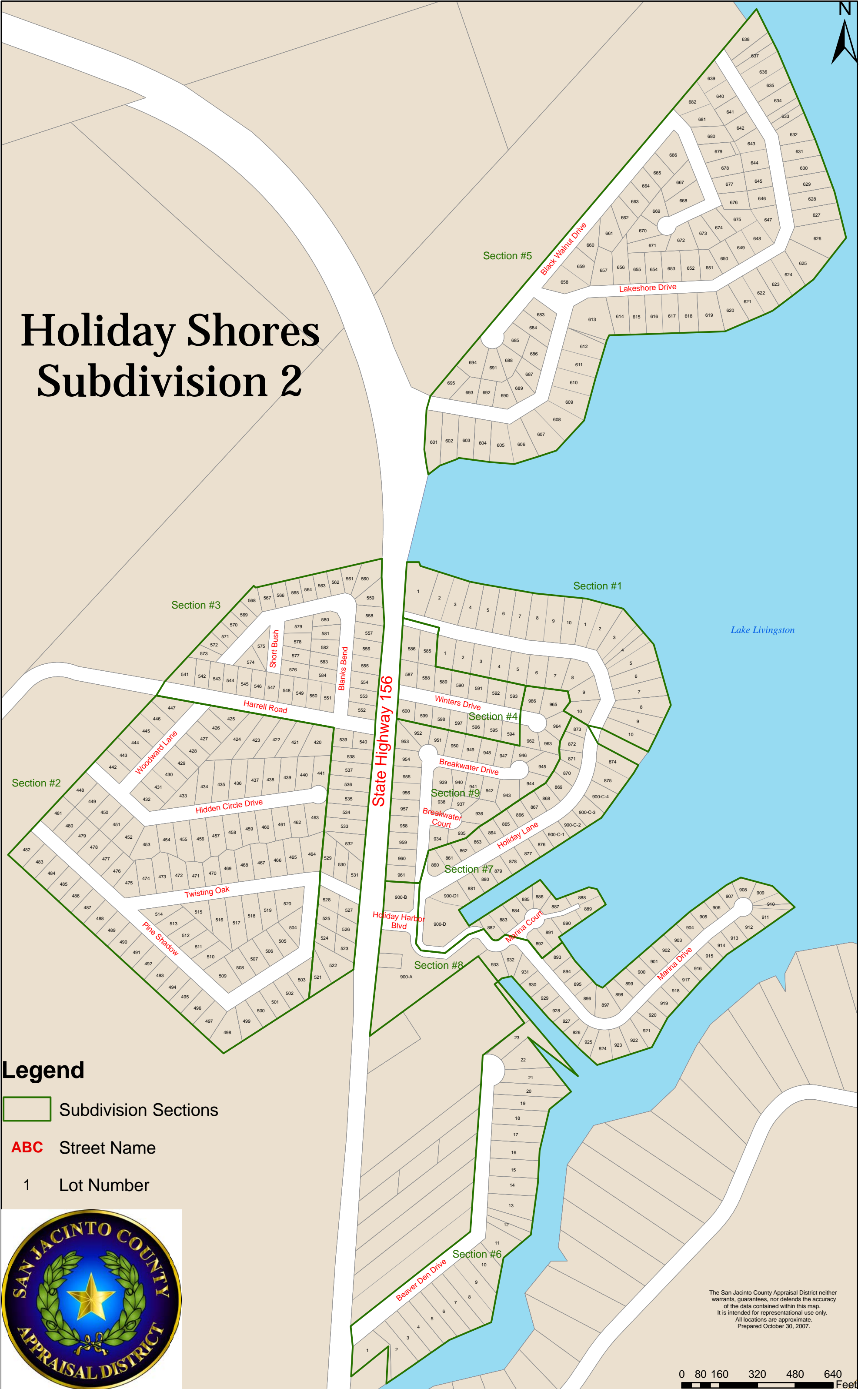


Holiday Shores Subdivision 2



Legend

- Subdivision Sections
- ABC** Street Name
- 1** Lot Number



The San Jacinto County Appraisal District neither warrants, guarantees, nor defends the accuracy of the data contained within this map. It is intended for representational use only. All locations are approximate. Prepared October 30, 2007.

0 80 160 320 480 640 Feet