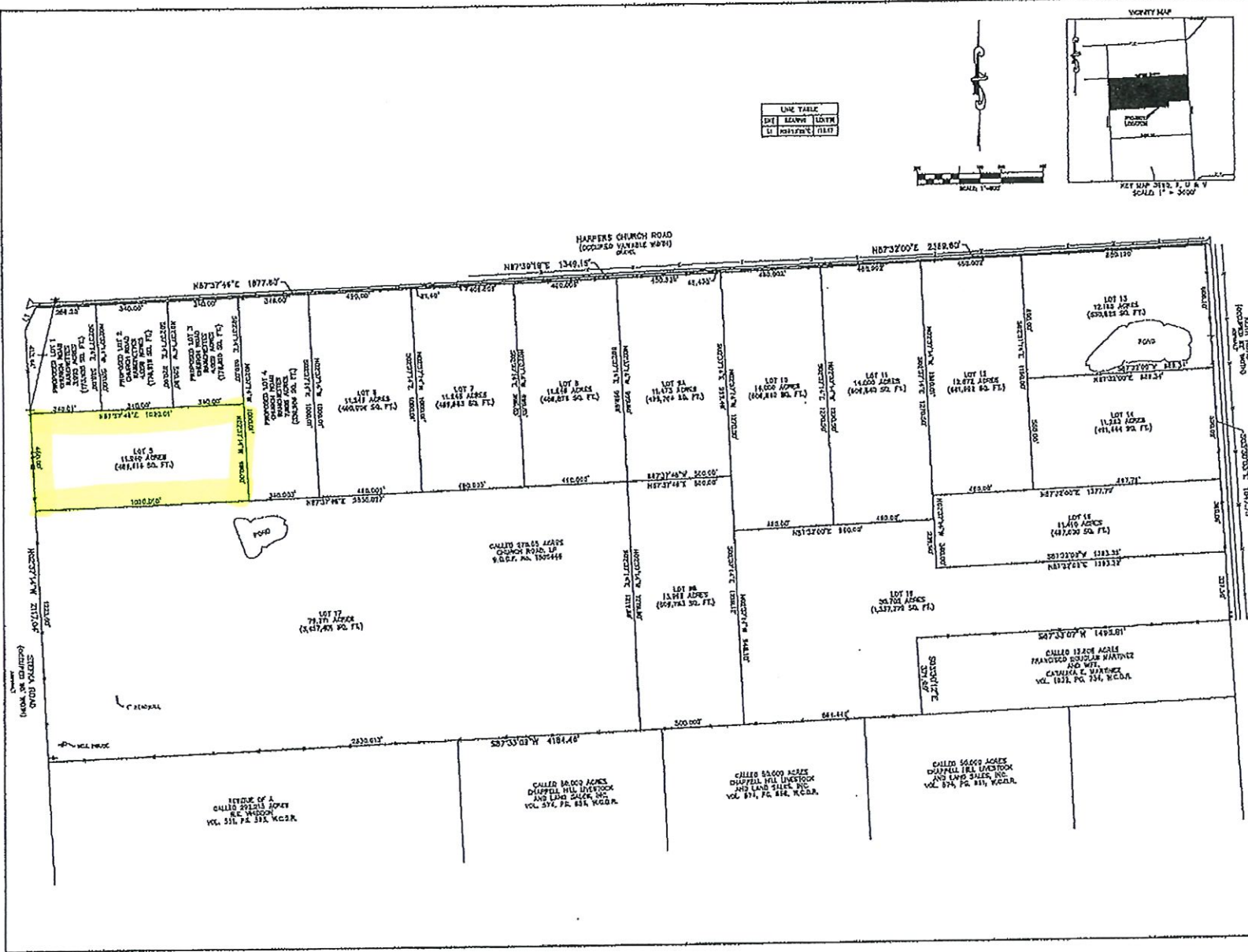


EXHIBIT "B"

SURVEY WITH LOTS

LOT	ACRES	LS/RS
1	11.150	LS
2	11.150	RS
3	11.150	LS
4	11.150	RS
5	11.150	LS
6	11.150	RS
7	11.150	LS
8	11.150	RS
9	11.150	LS
10	11.150	RS
11	11.150	LS
12	11.150	RS
13	11.150	LS
14	11.150	RS
15	11.150	LS
16	11.150	RS
17	11.150	LS
18	11.150	RS
19	11.150	LS
20	11.150	RS
21	11.150	LS
22	11.150	RS
23	11.150	LS
24	11.150	RS
25	11.150	LS
26	11.150	RS
27	11.150	LS
28	11.150	RS
29	11.150	LS
30	11.150	RS
31	11.150	LS
32	11.150	RS
33	11.150	LS
34	11.150	RS
35	11.150	LS
36	11.150	RS
37	11.150	LS
38	11.150	RS
39	11.150	LS
40	11.150	RS
41	11.150	LS
42	11.150	RS
43	11.150	LS
44	11.150	RS
45	11.150	LS
46	11.150	RS
47	11.150	LS
48	11.150	RS
49	11.150	LS
50	11.150	RS
51	11.150	LS
52	11.150	RS
53	11.150	LS
54	11.150	RS
55	11.150	LS
56	11.150	RS
57	11.150	LS
58	11.150	RS
59	11.150	LS
60	11.150	RS
61	11.150	LS
62	11.150	RS
63	11.150	LS
64	11.150	RS
65	11.150	LS
66	11.150	RS
67	11.150	LS
68	11.150	RS
69	11.150	LS
70	11.150	RS
71	11.150	LS
72	11.150	RS
73	11.150	LS
74	11.150	RS
75	11.150	LS
76	11.150	RS
77	11.150	LS
78	11.150	RS
79	11.150	LS
80	11.150	RS
81	11.150	LS
82	11.150	RS
83	11.150	LS
84	11.150	RS
85	11.150	LS
86	11.150	RS
87	11.150	LS
88	11.150	RS
89	11.150	LS
90	11.150	RS
91	11.150	LS
92	11.150	RS
93	11.150	LS
94	11.150	RS
95	11.150	LS
96	11.150	RS
97	11.150	LS
98	11.150	RS
99	11.150	LS
100	11.150	RS



**SURVEYOR'S NOTES**

1. THE BEARINGS SOUTH BEING ARE BASED ON THE TEXAS COORDINATE SYSTEM, SOUTH CENTRAL ZONE, NAD 83.

2. ACCORDING TO PLAT NO. 4444-2000000 (COMMUNITY-PANEL NO. 4444-2000000) MAP EFFECTIVE DATE FEBRUARY 18, 2004, THE SUBJECT PROPERTY LIES WITHIN THE AREA DESIGNATED AS 100% OF ENHANCED COVERAGE TO BE OUTSIDE THE 0.2% ANNUAL FLOOD FLOOD.

THE SURVEYOR IS BASED ON SCALING THE LOCATION OF THE SUBJECT TRACT ON THE LATEST AVAILABLE MAP, 2002 (IN ACCORDANCE TO GEORGIAN FLOOD INSURANCE RATES ACT) AND IS NOT INTENDING TO IDENTIFY SPECIFIC FLOODING CONDITIONS.

LONESTAR ALLIANCE

BOUNDARY EXHIBIT

CALLED 276.05 ACRES (FOUND 275.992 ACRES) TRACT OUT OF THE JUAN A. PADILLA SURVEY ABSTRACT NO. 48 WALLER COUNTY, TEXAS

**WEST BELT SURVEYING, INC.**

REGISTERED PROFESSIONAL SURVEYOR

NO. 10121

DATE: 02/15/2019

PROJECT: 15-007

FILE NO. 15-007

DATE: FEBRUARY 15, 2019

THIS DOCUMENT IS THE PROPERTY OF WEST BELT SURVEYING, INC. AND IS NOT TO BE REPRODUCED OR TRANSMITTED IN ANY FORM OR BY ANY MEANS, ELECTRONIC OR MECHANICAL, INCLUDING PHOTOCOPYING, RECORDING, OR BY ANY INFORMATION STORAGE AND RETRIEVAL SYSTEM.