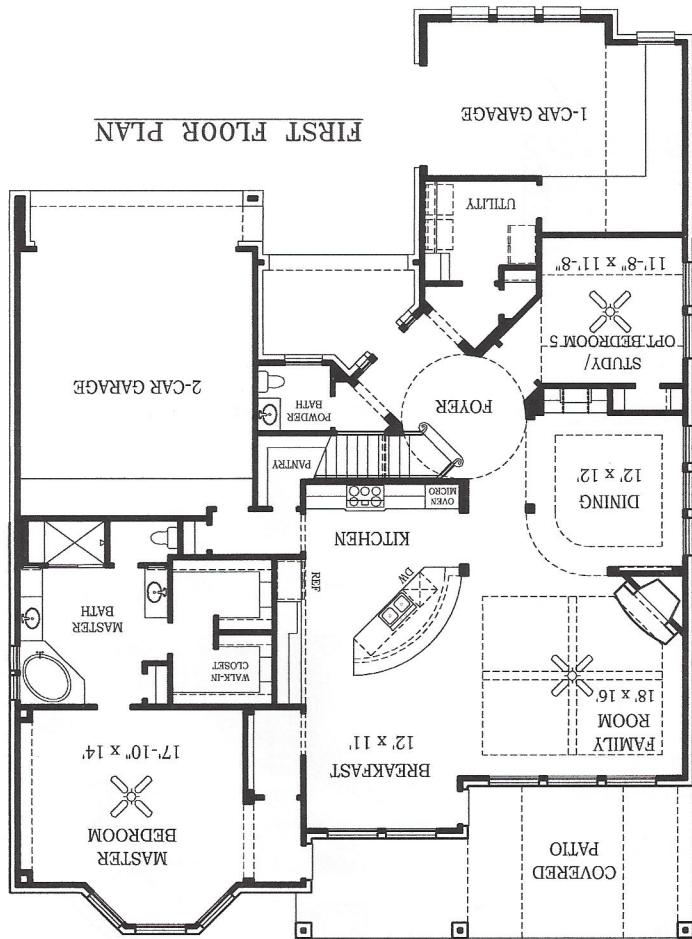


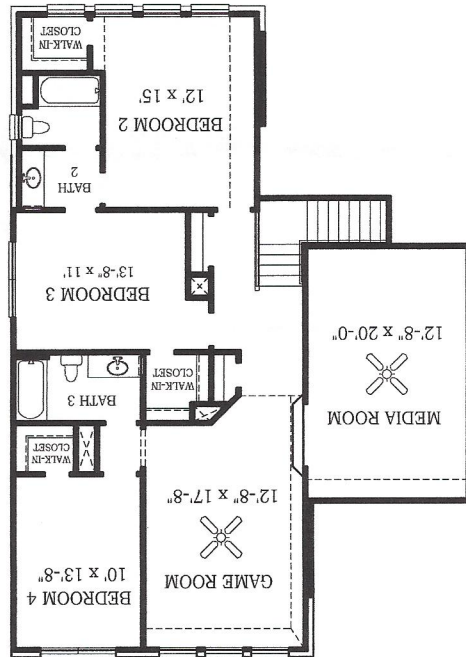
3,559 sq. ft.

Genoa

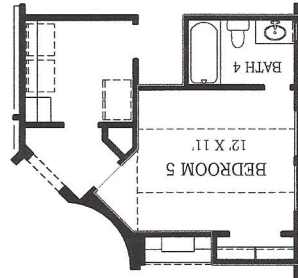
Plan 8090



SECOND FLOOR PLAN



OPTIONAL BEDROOM 5 AT THE STUDY



Square footage and room dimensions are approximate and may vary per elevation. Window placement, roof line and porches may also vary by elevation. Plans, features, prices and availability are subject to change without notice.

Print Date 06/05/14

The Sausalito Collection

Standard Features

ENERGY SAVINGS AND COMFORT

- 100% Compact Fluorescent Lamps and meets/exceeds current Energy Star standards
- EFL Heating and Cooling Energy Use Guarantee (limited)
- EFL Heating and Cooling Energy & Comfort Guarantee (limited)
- High Efficiency 16 SEER HVAC system with Trane condenser and 80% AFUE Trane furnace
- Honeywell® programmable thermostat
- R-13 wall insulation, living areas
- R-38 blown-in attic insulation, living areas
- R-22 insulation on sloped ceilings, at top plate per Energy Star specs, living areas
- Foil-backed R-8 A/C ductwork
- Polyce® insulation around windows, doors, bottom plate and other openings
- Double-pane LoE³ beige insulated vinyl windows that tilt-in for easy clean
- High-efficiency gas water heater
- Natural gas cooking
- Energy efficient Tech Shield® radiant barrier roof decking
- 1/2" Dow® R-3 insulated sheathing, except windstorm areas

EXTERIOR DETAILS

- Bricked first floor exterior, all sides. Stone or stucco accents, per plan.
- Engineered post tension slab
- Concrete driveways and walks
- Two exterior faucets
- Weatherproof exterior electrical outlets near front and rear doors
- Full sod in front and back yard, fenced rear yard
- Full sprinkler system
- Gutters on front of home
- Landscaped front yard to developer requirement
- Large covered front porches with choice of brick or flagstone floor, per plan.
- 8 Ft. Solid Mahogany wood front door with sand cast hardware
- Full-view rear door with integral blind
- Garage Door Opener with two remote controls
- Wayne-Dalton Charleston insulated garage doors

INTERIOR DETAILS

- Security System with motion detector and single key pad
- 10 ft. ceilings on first floor
- Rounded sheetrock corners
- 2 Piece crown molding in foyer, dining room, family room, with single crown molding in kitchen, breakfast, study master bedroom and master bath.
- 6-1/2 inch Baseboards throughout
- Fireplace with stone surround and cedar mantel or cast stone accented by eyeball light. Includes gas log inset with glass door front and remote control.
- Two-panel Roman arch, smooth, raised panel, interior passage doors
- Etched glass French doors at study.
- Iron spindle balusters with oversized oak handrail.
- Tile flooring in foyer, kitchen, breakfast room, bathrooms, and laundry room
- Energy Star rated multi-speed ceiling fan with wall switch control in master bedroom, family room, game room, and exterior side or rear patio, per plan
- 1/2" - 5# Rebond carpet pad with standard carpet
- Carpeting with a five-year wear limited warranty
- Insulated folding stair or door access to attic, per plan
- Pre-wired for telephones in kitchen, master bedroom, game room, study, and secondary bedrooms. Pre-wired for cable television outlets in family room, game room, master bedroom and secondary bedrooms.
- Smoke and carbon monoxide detectors
- Suspended light fixture in dining room, per plan
- Suspended pendant lighting over kitchen island, per plan.
- Satin or oil rubbed finish designer light fixtures, entry, dining room
- Two-tone decorator color scheme, featuring Toasted Almond walls with Shell White trim.
- 2 inch faux-wood blinds in all operable windows
- Interior electrical breaker service panel

- Foundation inset to accommodate optional safe in Master Bedroom closet
- Floor plug in Family Room, per plan
- Decora light switches

KITCHEN DETAILS

- 3 CM Granite countertops (choice of two colors standard) with polished square edge and 9-1/2 inch deep, 50/50 black Stainless Steel under-mount sink with tile backsplash.
- Complete GE® Stainless Steel appliance package including:
 - GE Profile® 5 burner gas cooktop
 - GE® built-in 36" double electric oven/convection oven with built-in GE Profile® designer vent hood
 - Energy Star rated GE® dishwasher with hidden controls
 - Built-in GE Profile® 2.2 cu. ft. microwave
 - Energy Star rated 24 cubic foot GE Profile® side-by-side Stainless Steel counter depth refrigerator with ice and water dispenser
- Recessed can lighting. Lighting and electrical outlets mounted under upper cabinets
- Custom Brandom Cabinetry with 42" high uppers, maple drawers with dove-tail construction, with knobs/pulls, and full extension guides. Islands with cabinet wrap detail, per plan.
- Tile flooring in kitchen and breakfast area
- Delta® Touch2O™ Trinsic Stainless or Cassidy Oil Rubbed Bronze faucet with soap dispenser
- Garbage disposal
- Kitchen countertop overhangs for informal dining, per plan

MASTER BATH DETAILS

- Royal® bisque Imperial, drop-in, garden tub with tile backsplash, wrapped with custom Brandom Cabinetry
- Brandom Cabinetry 36" high vanity, maple drawers with dove-tail construction, with knobs/pulls, and full extension guides, per plan
- Matching Brandom Cabinetry wooden medicine cabinet
- Delta® Stainless or Oil Rubbed Bronze faucets and Designer bath accessories
- Tile flooring
- Separate dropped shower with tile surround.
- Granite vanity tops with rectangular bisque, under mount double sinks
- Framed vanity mirrors
- Air conditioned, walk-in closets with fluorescent lighting
- Elongated bisque commode
- Rain glass window with blind

SECONDARY BATH DETAILS

- Royal® Prince bisque acrylic tub with tile shower walls
- Tile flooring
- Granite vanity tops with rectangular bisque under-mount sink.
- Brandom Cabinetry, maple drawers with dove-tail construction, with knobs/pulls, and full extension guides, per plan
- Matching Brandom Cabinetry wooden medicine cabinets
- Delta® Stainless or Oil Rubbed Bronze faucets and Designer bath accessories
- Elongated bisque commodes
- Powder bath with framed vanity mirror, granite countertop and Brandom cabinet with storage.

LAUNDRY ROOM DETAILS

- Optional GE® front-load electric laundry set
- Optional upgrade gas dryer hook-up
- Interior laundry room with tile flooring
- Freezer space, most plans
- Brandom cabinet and rod combination above washer / dryer area.

CONSTRUCTION DETAILS

- 10-Year Home Buyer's Warranty
- Post tension foundation certified on-site by an independent engineer
- High quality laminated Owens Corning® composition roof shingles with 30-year warranty
- 6-1/2 inch Baseboards in garage
- Detailed home inspection by independent third party inspector.

Important Note:

Features are subject to change without notice and may differ slightly in homes according to start date. Homes under construction may have included upgrades. 11.24.14

The Sausalito Collection

Standard Features



Modern Design • Performance Guaranteed • Green Certified

Graystone Hills –

- Security System
- Energy Star rated 24 cubic foot side-by-side stainless steel counter depth refrigerator with ice and water dispenser.
- Full sprinkler system (front and back).
- GE Profile 5 burner built-in gas cooktop
- 10 FT ceilings on first floor

Community Features

- Greenbelts
- Park
- Nature Reserve
- Community Pool and Clubhouse
- Close to I-45 access

Important note: Features are subject to change without notice and may differ slightly in homes according to start date. Homes under construction may have included upgrades. Please check with New Home Consultant for additional information.

11/24/14

Chesmar Homes is an Environments For Living Platinum, Certified Green Builder.

With an average HERS score of 65, each new Chesmar home comes with an Environments For Living comfort and performance guarantee, and is required to undergo twelve (12) third-party quality inspections to ensure that it meets the exacting standards to achieve the Environments For Living Platinum, Certified Green Builder designations. Third-party inspections and certifications include:

1. Foundation Pre-Pour
2. Foundation Pour
3. Foundation Elongation
4. Structural, Windstorm-Code
5. Mechanical, Electrical, Plumbing-Code
6. EFL Blocking
7. Duct Blaster
8. Insulation
9. Blower Door
10. Final Mechanical, Electrical, Plumbing
11. Cosmetic Quality Assurance
12. Quality Assurance Re-inspection



ENVIRONMENTS FOR *Living*