

Updates & Features

11723 Laneview Drive Houston, Texas 77070

- 5 Bedrooms / 2.5 Bathrooms: Five bedrooms provide ample living space, along with 2.5 bathrooms for convenience.
- Custom Resort-Style Pool: Enjoy a custom-designed resort-style pool complete with bubblers and a spa for built in relaxation.
- Professionally designed landscaping, accentuated by landscape lighting, enhances the front and backyards complete with an automatic sprinkler system.
- The downstairs features wood-style tile flooring, adding both elegance and durability.
- The kitchen boasts a spacious custom island with seating, perfect for gatherings and quartz countertops.
- Recessed lighting brightens key areas, including the kitchen, bathroom, and study.
- First floor primary suite includes dual walk-in closets and vanities along with a large tile shower.
- Enjoy both formal dining and flexible space on the first floor, adaptable to your needs.
- A wine fridge and nook adds a touch of luxury to your kitchen and beverage storage.
- Spacious living areas and generous bedroom sizes throughout the home ensure comfort and space
- A stunning fireplace serves as a focal point, adding warmth and charm along with custom woodwork details throughout the home
- Welcoming front porch with beautiful door.
- Large windows throughout the home fill the spaces with abundant natural light.
- There is ample storage throughout the property for organization and convenience.

Conveniently located to all of the many amenities in Lakewood Village and Vintage Park and zoned to highly acclaimed CyFair ISD.

We've asked the sellers a few questions to get to know their community...

11723 Laneview Drive Houston, Texas 77070

How would you describe the area, and what it's like living here?

This street is quiet with lots of loving families who been in the neighborhood for a long time just like our family! The neighborhood does not disappoint during the holiday season. No matter the holiday there is never a shortage of homes decked out with lights, decor and music!

How do people like to socialize in the neighborhood?

There seems to be something for everyone. The trails are wonderful and always full of people walking, biking, jogging and roller blading. The creeks often have kids fishing. The resident's club offers swimming, tennis, fishing and volleyball. We have parades for holidays and Santa comes to the club for Christmas, there's always something going on!

What are your favorite places to eat, shop, visit in the neighborhood?

We love Rudy's and Juanita's Mexican Restaurant and Kurrywallah Indian. Cypress Sweets is an amazing place that also offers special parties for birthdays and gatherings. Vintage Park is around the corner full of boutique shopping, restaurants and salons along with HEB and Whole Foods.

What else can you share with future buyers?

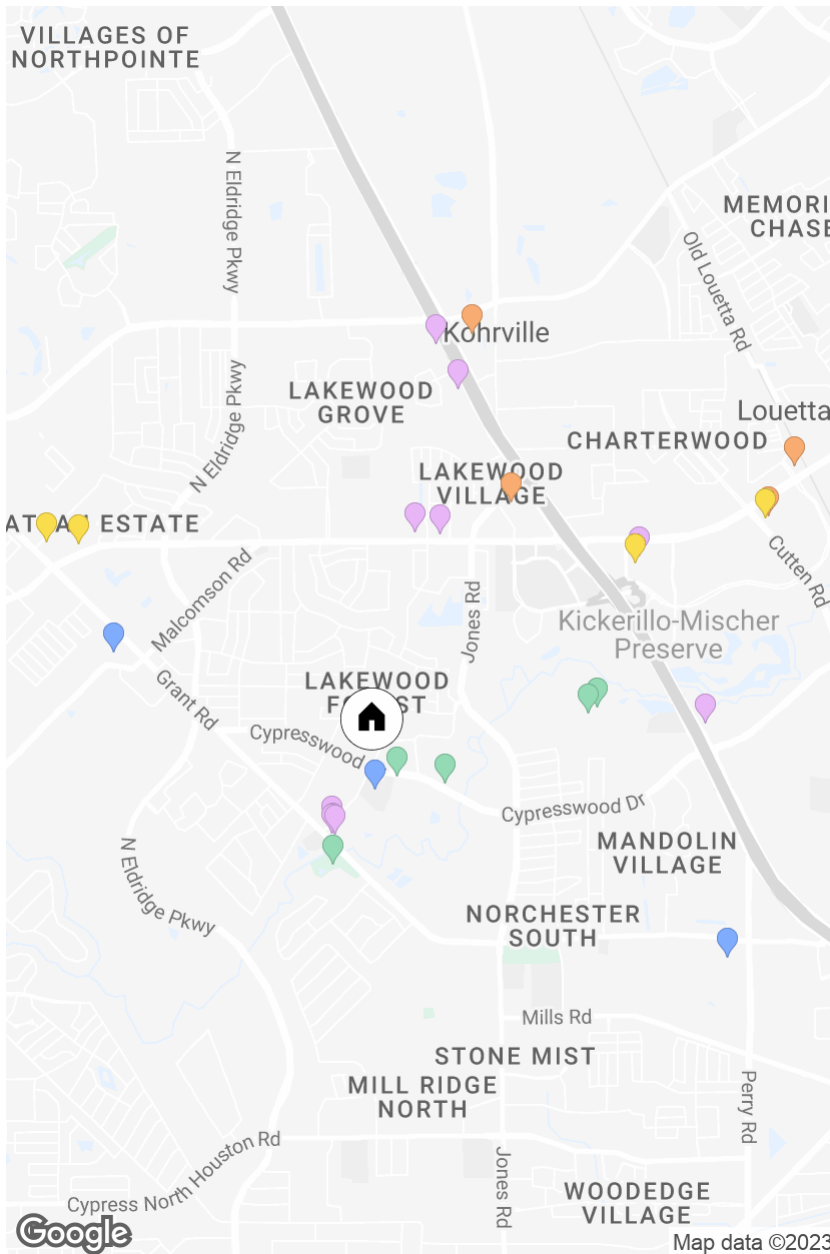
If you're looking for something close, but not in the middle of the hustle and bustle of this growing area, Lakewood Forest is it! Our family enjoyed Kickerillo Preserve and Russ Poppe Park! Its great to have it all nestled into the neighborhood.

This home is full of many great memories for us! It's a great layout and has plenty of space and the backyard and pool/spa is truly an oasis. We hope someone enjoys it as much as we have!

11723 Laneview Drive

Lakewood Forest

5 BD 3 BA 2941 SF



SCHOOLS

- Moore Elementary School, 0.36mi
- Hamilton Middle School, 1.37mi
- Cypress Creek High School, 2.19mi

RESTAURANTS

- Rudy's Grill & Cantina, 0.58mi
- Cypress Sweets, 0.61mi
- Crave Fusion Bistro & Cocktails, 0.62mi
- Lakewood Forest Shopping Center, 0.62mi
- Crust Pizza Co. - Louetta, 0.99mi
- Pizza Fino, 1.01mi
- Smoothie King, 1.71mi
- Salata, 1.60mi
- Red Robin Gourmet Burgers and Brews, 1.75mi
- Panera Bread, 1.96mi

PARKS

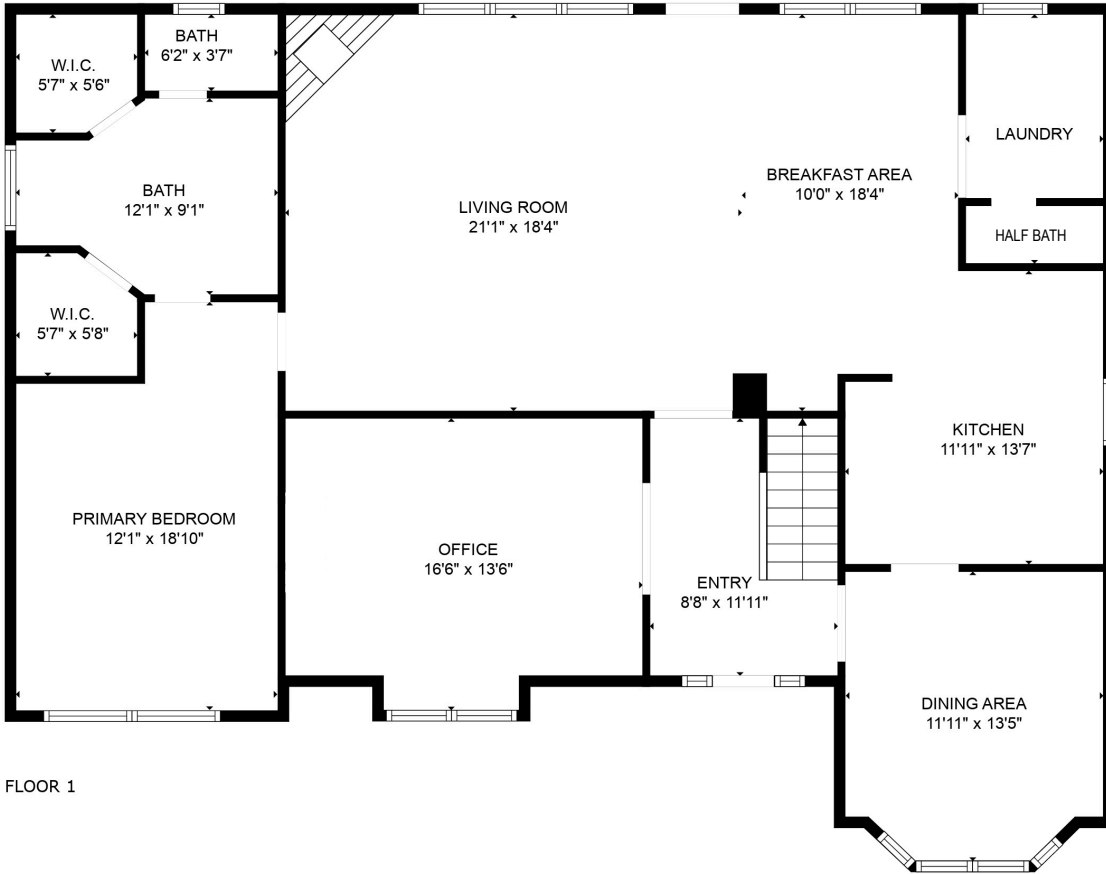
- Richard D Taylor Park, 0.32mi
- Lakewood Crossing Park, 0.49mi
- Russ Poppe Family Park, 0.77mi
- 100 Acre Wood Preserve, 1.11mi
- Cypress Creek MTB Trail parking OFFICIAL, 1.16mi

GROCERY STORES

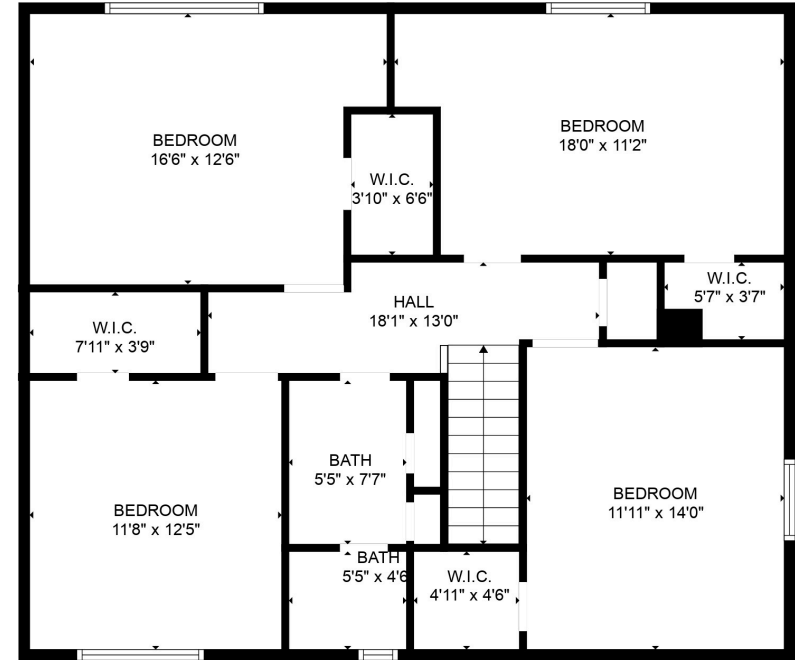
- Target Grocery, 1.32mi
- Sprouts Farmers Market, 2.04mi
- Whole Foods Market, 2.28mi
- ALDI, 2.52mi

GYMS

- CYCLEBAR, 1.57mi
- Pure Balance, 1.76mi
- Planet Fitness, 1.90mi
- Orangetheory Fitness, 2.26mi



FLOOR 1



FLOOR 2

GROSS INTERNAL AREA
 FLOOR 1: 1660 sq. ft, FLOOR 2: 1025 sq. ft
 TOTAL: 2685 sq. ft

MEASUREMENTS ARE CALCULATED BY CUBICASA TECHNOLOGY. DEEMED HIGHLY RELIABLE BUT NOT GUARANTEED.