



5

BEDROOMS

3

FULL BATHROOMS

2

PARTIAL BATHROOMS

3,681

± SQ.FT.

## 803 Walkwood Circle

in Memorial Thicket/Energy Corridor Area

\$765,000

- ❑ Great neighborhood with an active social group for people of all ages
- ❑ 24-hour neighborhood security service
- ❑ Located in the heart of the Energy Corridor w/easy access to Memorial, Eldridge, I-10, & Terry Hershey Park and quick access to restaurants (District 7 and Cafe Benedict's), private access greenspace, and bike trails
- ❑ Idyllic character house on a corner lot
- ❑ Wrap-around front porch
- ❑ Large pool with adjacent entertaining space
- ❑ So many windows - light and bright!
- ❑ Primary suite downstairs with huge walk-in closet and zen-like bathroom with skylight
- ❑ Separate guest suite/pool room with private access, kitchenette, full bathroom and skylight
- ❑ Kitchen has gas stovetop, stainless appliances, and two pantries
- ❑ Lovely, large living room with cathedral ceilings, gas statement fireplace and wet bar with cooler
- ❑ Marble window sills on ground floor
- ❑ No carpet throughout - wood & tile only
- ❑ Enclosed gameroom
- ❑ Tons of indoor storage space including an extra walk-in storage room
- ❑ Oversized two car garage with peg board walls throughout
- ❑ Nearby 'Watermark' mixed-use development coming soon ([www.watermarkdistrict.com](http://www.watermarkdistrict.com))

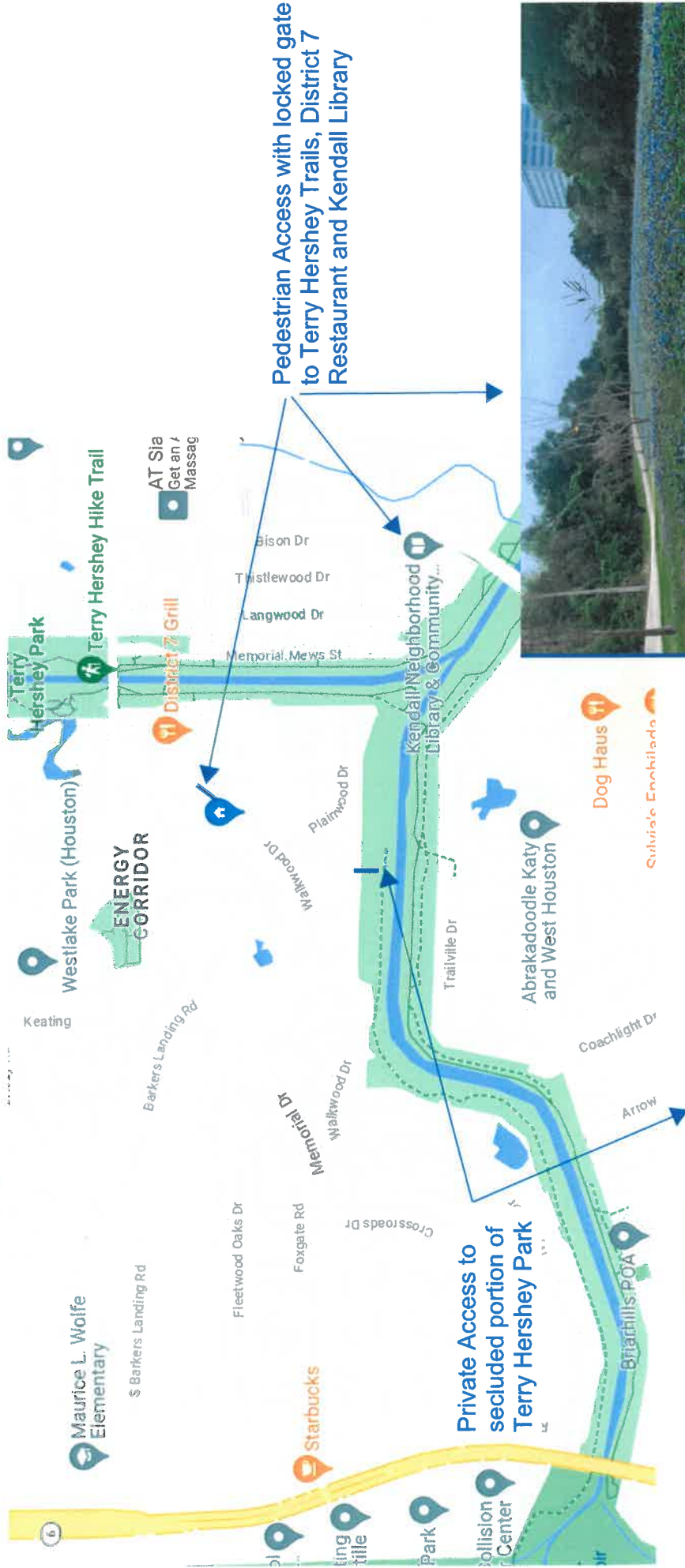
[sothebysrealty.com/id/MG2DRC](http://sothebysrealty.com/id/MG2DRC)

Martha Turner | Sotheby's  
INTERNATIONAL REALTY

Martha Turner Sotheby's International Realty - Memorial Brokerage

© 2023 Sotheby's International Realty. All Rights Reserved. Sotheby's International Realty® is a registered trademark and used with permission. Each Sotheby's International Realty office is independently owned and operated, except those operated by Sotheby's International Realty, Inc. This material is based upon information which we consider reliable but because it has been supplied by third parties, we cannot represent that it is accurate or complete and it should not be relied upon as such. All offerings are subject to errors, omissions, changes including price or withdrawal without notice. If your property is listed with a real estate broker, please disregard. It is not our intention to solicit the offerings of other real estate brokers. We are happy to work with them and cooperate fully. Equal Housing Opportunity.

# Memorial Thicket Area



Private Access to secluded portion of Terry Hershey Park

Pedestrian Access with locked gate to Terry Hershey Trails, District 7 Restaurant and Kendall Library

