

Updates & Features

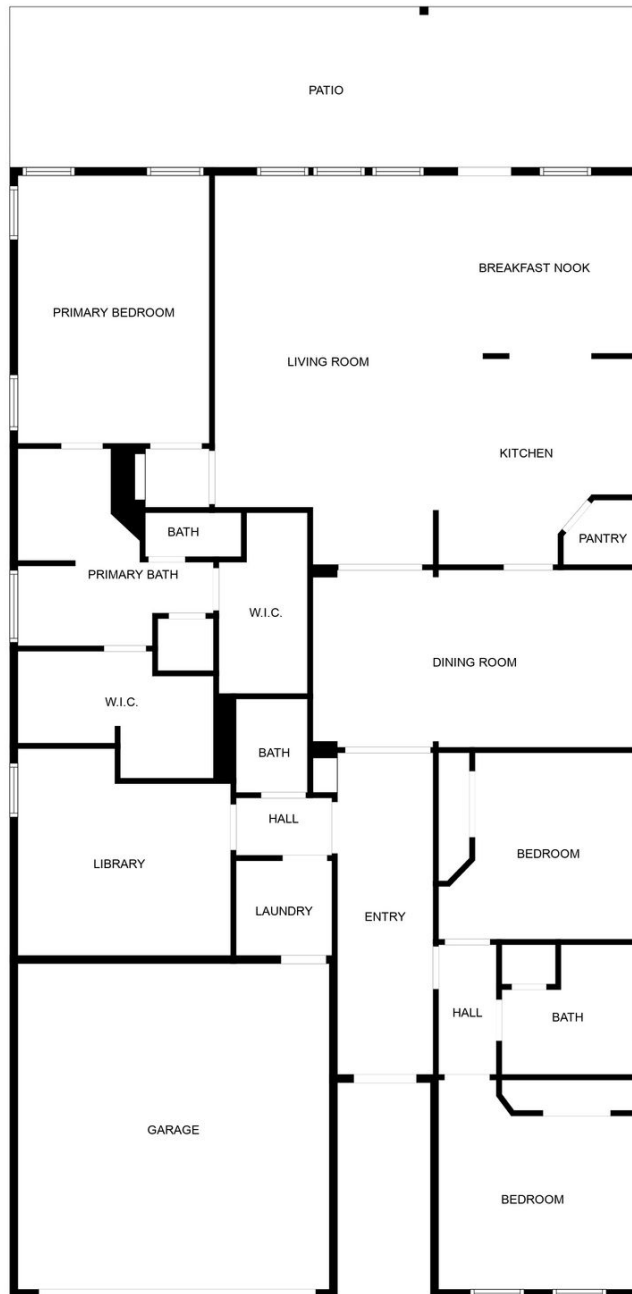
18543 Gardens End Lane Houston, TX 77084

- **Kitchen Open to Living Room:** Ideal for entertaining and open living.
- **Large Patio with Covered Area:** Outdoor versatility for all weather.
- **Granite Countertops:** Durable and luxurious kitchen surfaces.
- **Gas Appliances:** Precision cooking and energy efficiency.
- **Tall Ceilings:** Spaciousness and interior design potential.
- **Natural Light:** Abundant windows for bright living spaces.
- **Corner Lot:** Extra space, privacy, and landscaping potential.
- **Stone Brick Exterior:** Durable and timeless home exterior.
- **Brick Exterior Entry:** Adds charm to the welcoming entrance.
- **Grand Entryway:** Impressive and spacious first impression.
- **Tile Floors:** Easy maintenance and cool in summer.
- **Breakfast Bar:** Convenient dining and extra counter space.
- **Arched Doorways:** Architectural charm enhances design.
- **Study with Built-Ins:** Perfect home office with storage.
- **Lots of Storage:** Ample closet space for organization.

Surrounded by wonderful green spaces, Grand Oaks features walking trails, an Olympic-size swimming pool with water slides, plus a pool for children and an excellent playground.

Floorplan

18543 Gardens End Lane Houston, TX 77084

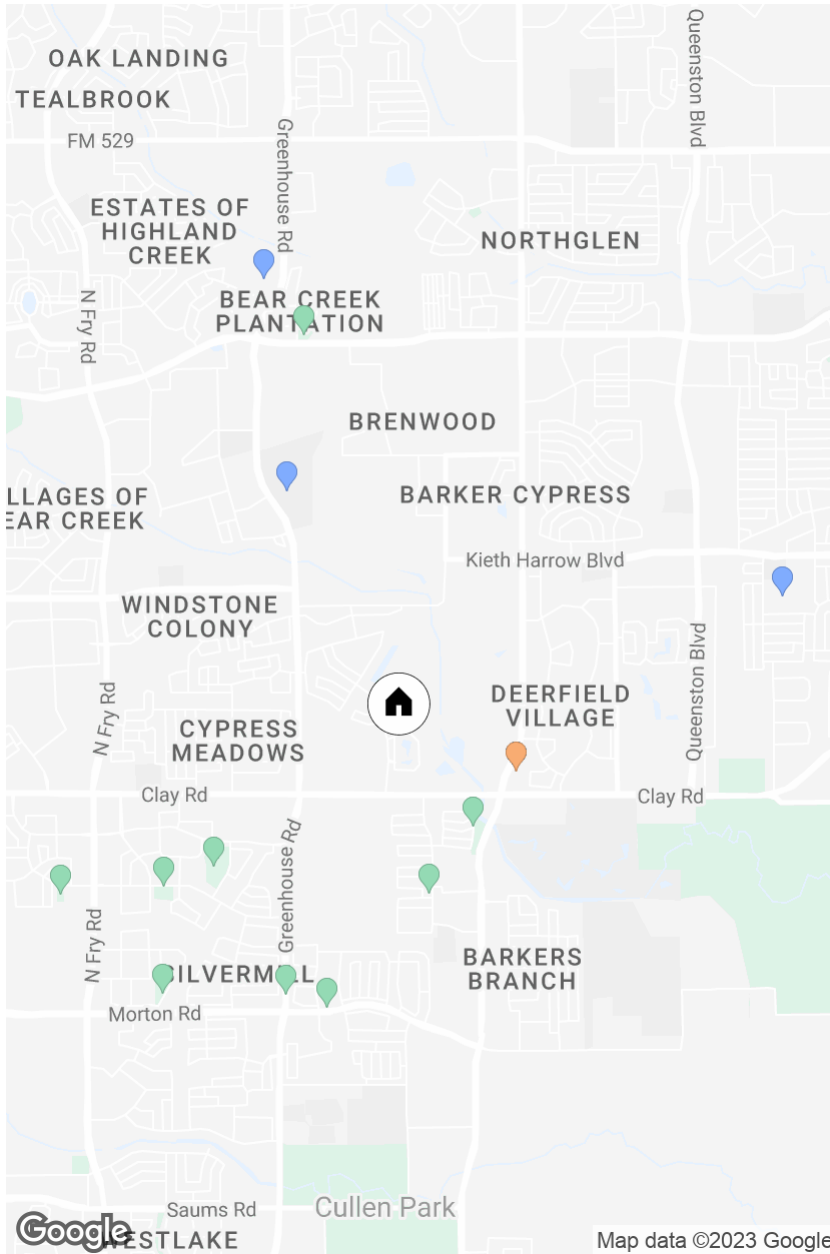


MEASUREMENTS ARE CALCULATED BY CUBICASA TECHNOLOGY. DEEMED HIGHLY RELIABLE BUT NOT GUARANTEED.

18543 Gardens End Lane

Listing Neighborhood

3 BD 2.5 BA 2376 SF



GROCERY STORES

Randalls, 0.69mi

PARKS

Wood Fern Park, 0.73mi

Rolling Green Park, 0.98mi

Mayde Creek M.U.D - North Park, 1.27mi

Westfield

Pool/Splashpad/Tennis/Playground, 1.53mi

South Mayde Creek Pocket Park, 1.60mi

Mayde Creek North Hike & Bike Trail, 1.60mi

Mayde Creek MUD - South Park, 1.92mi

BRENDA JILL GARCIA MEMORIAL PARK, 1.96mi

Ricewood Park, 1.99mi

SCHOOLS

Hoover Elementary School, 1.24mi

Watkins Middle School, 1.27mi

Cypress Lakes High School, 2.04mi