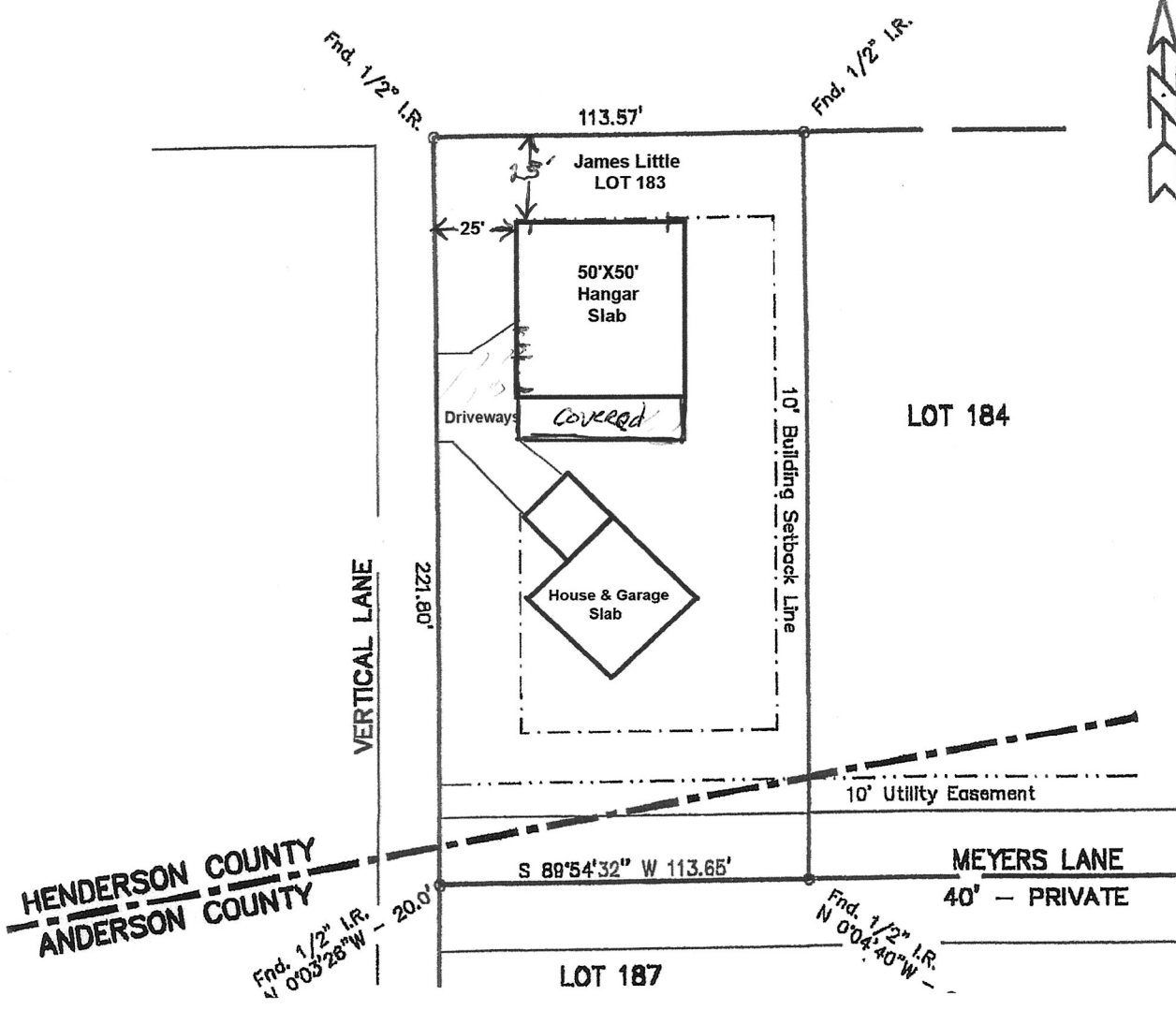


GRASS AIRSTRIP



For Committee review and approval:

- First build will be the 50 ft. X 50 ft. hangar with a 45 ft. opening on the north end.
- The roof will be a gable end on the north and south ends with a 3 on 12 pitch.
- There will be a 50X12 covered and open walled parking area on the south end
- The wall color will be charcoal, with black wainscoting, and black trim. Roof color galvalume.
- A 30 ft. drive will come off Vertical Lane to a 14X14 roll up door and the parking area.
- Sewer will accommodate 1 bath in the hangar and 1.5 baths in the future home.