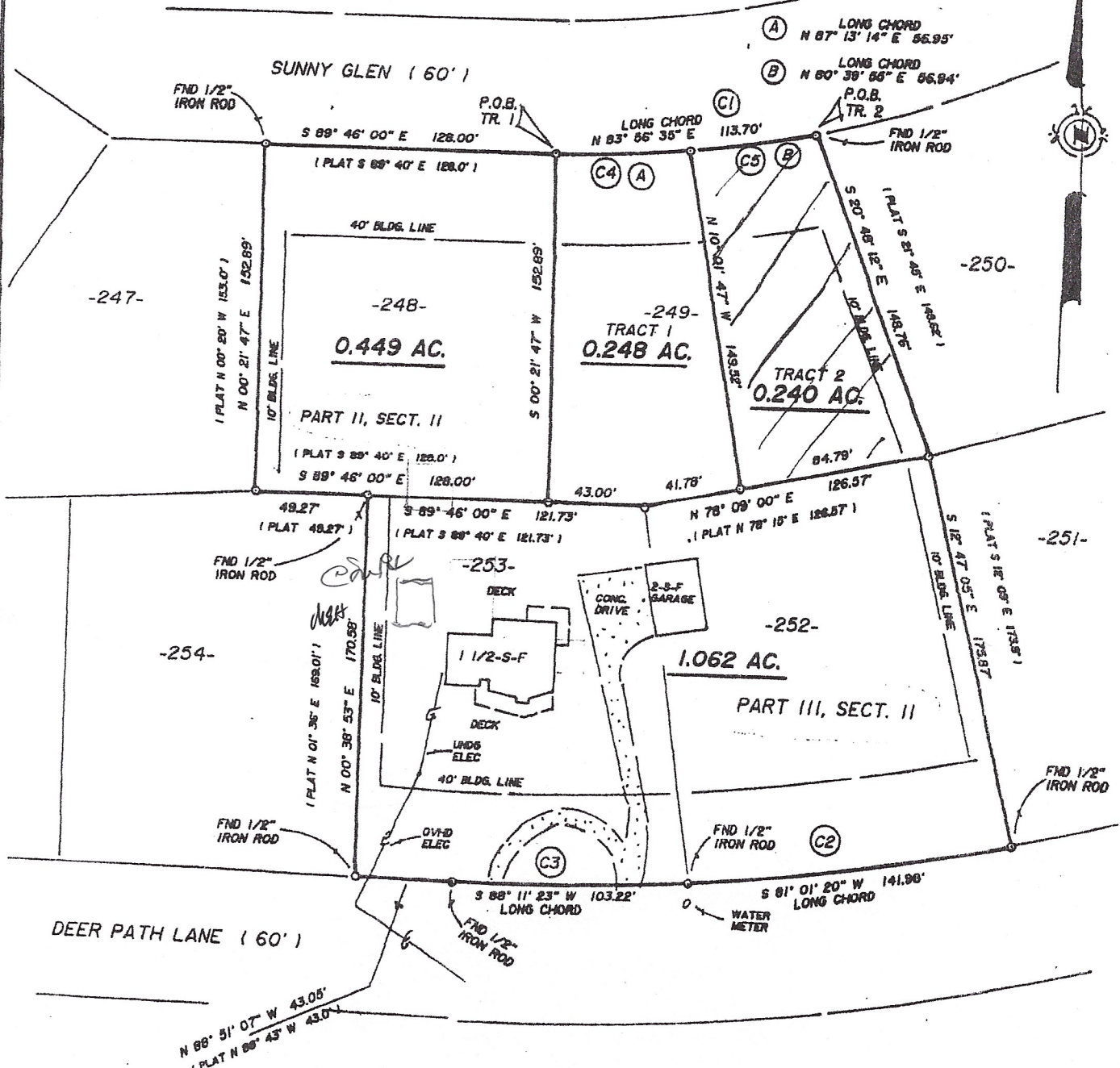


WOOD COUNTY, TEXAS



CURVE DATA

C1	Δ = 13°06'36"	R = 498.00'	L = 113.95'
C2	Δ = 08°16'29"	R = 983.94'	L = 142.10'
C3	Δ = 06°00'48"	R = 983.94'	L = 103.27'
C4	Δ = 06°33'21"	R = 498.00'	L = 56.98'
C5	Δ = 06°33'17"	R = 498.00'	L = 56.97'

NOTE: BEARINGS AS SHOWN HEREON ARE "TRUE BEARINGS" AS DETERMINED BY SOLAR OBSERVATION.

SUBDIVISION PLAT OF PART II, SECTION II, OF RECORD AT VOL. 4, PG. 44, PLAT RECORDS, WOOD COUNTY, TEXAS. SUBDIVISION PLAT OF PART III, SECTION II, OF RECORD AT VOL. 5, PG. 8, PLAT RECORDS, WOOD COUNTY, TEXAS.

REFERENCE W4613-46.DAT

1/2" IRON RODS SET AT ALL CORNERS EXCEPT AS SHOWN HEREON.

SEE "FIELD NOTES TRACT 1, 0.248 ACRES" & "FIELD NOTES TRACT 2, 0.240 ACRES" W4702 OF EVEN DATE HEREWITH FOR A WRITTEN DESCRIPTION OF THE ABOVE TRACTS.



We, Turner & Associates, do hereby certify that this plat was prepared from an actual survey made on the ground under our supervision during the month of October, 2001.

There are no discrepancies, apparent conflicts, shortages in area, visible boundary line conflicts, encroachments, or overlapping of improvements, no visible easements or rights-of-way, except as shown hereon.

The improvements on this tract do not lie within the limits of a "SPECIAL FLOOD HAZARD AREA" as defined by FLOOD HAZARD BOUNDARY MAP, COMMUNITY PLAN.



PLAT SHOWING SURVEY OF LOTS 248 & 249, PART II, SECT. II & LOTS 252 & 253, PART III, SECT. II