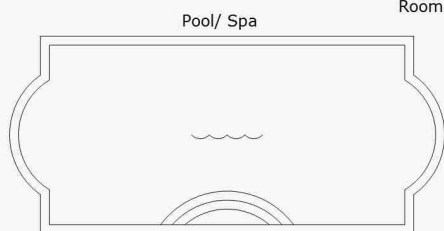
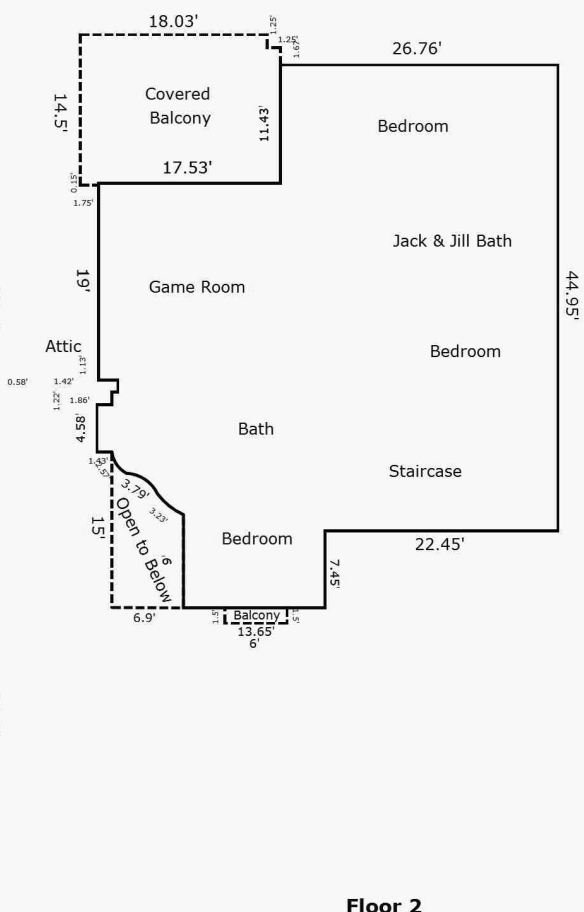
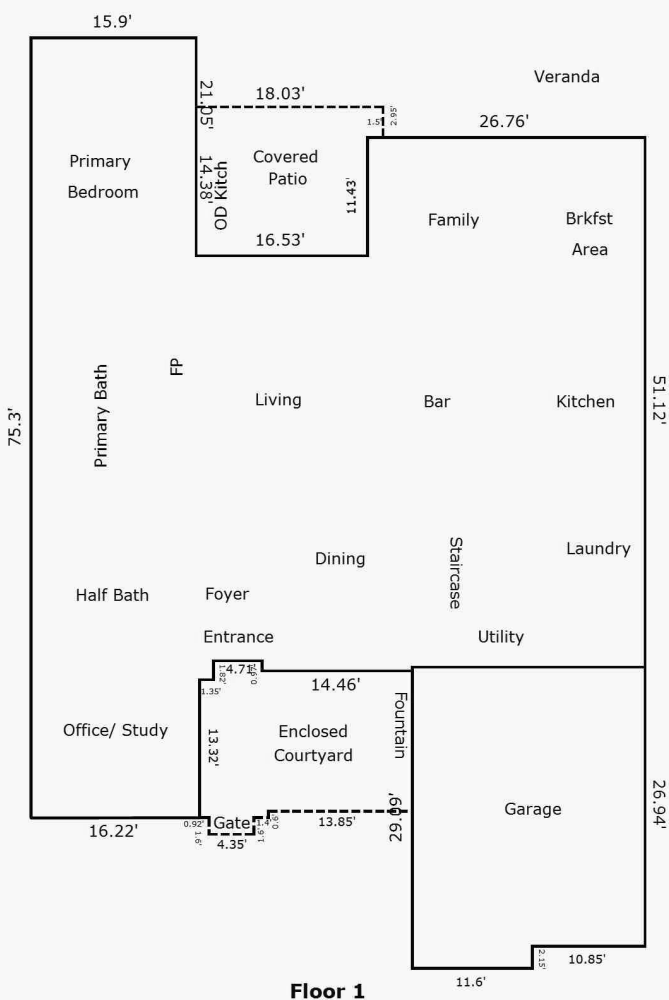


Room Labels are for Illustrative Purposes Only



Firepit



GLA Calculations were calculated in accordance with the American National Standard for Single-Family Residential Buildings (ANSI Z765-2021).

Living Area		Calculation Details	
First Floor	3229.99 Sq ft	15.9 × 21.05 = 334.7	
		51.12 × 22.45 = 1147.64	
		4.31 × 11.43 = 49.26	
		36.74 × 39.09 = 1436.17	
		1.82 × 1.35 = 2.46	
		16.22 × 15.14 = 245.57	
		0.5 × 16.22 × 0.02 = 0.16	
		14.46 × 0.97 = 14.03	
Second Floor	1849.78 Sq ft	13.65 × 7.45 = 101.65	
		0.5 × 22.45 × 0 = 0	
		36.1 × 1.55 = 56.11	
		0.5 × 2 × 2.5 = 2.5	
		36.1 × 2 = 72.2	
		0.5 × 2 × 3 = 3	
		38.6 × 2 = 77.2	
		0.5 × 2.04 × 1.4 = 1.42	
		41.6 × 2.04 = 84.7	
		44.43 × 4.58 = 203.49	
		43.01 × 1.22 = 52.47	
		42.43 × 1.13 = 47.95	
		44.29 × 19 = 841.51	
		26.76 × 11.43 = 305.86	
		Arc = 0.43	
		Negative Arc = 1.22	
		Arc = 0.5	
3 Car Attached Garage	-629.74 Sq ft	22.45 × 26.94 = 604.8	
		11.6 × 2.15 = 24.94	
Total Living Area (Rounded):		5080 Sq ft	
Non-living Area			
Open to Below	80.77 Sq ft	0.5 × 6.9 × 0.04 = 0.12	
		6.9 × 8.96 = 61.83	
		0.5 × 2.5 × 2 = 2.5	
		4.4 × 2 = 8.8	
		0.5 × 3 × 2 = 3	
		1.4 × 2 = 2.8	
		0.5 × 1.4 × 2.04 = 1.42	
		Negative Arc = 0.43	
		Arc = 1.22	
		Negative Arc = 0.5	
Juliet Balcony	9 Sq ft	6 × 1.5 = 9	
Covered Terrace	275.37 Sq ft	13.1 × 1.25 = 16.38	
		14.35 × 16.28 = 233.62	
		14.5 × 1.75 = 25.38	
Covered Patio	242.13 Sq ft	14.38 × 16.53 = 237.7	
		1.5 × 2.95 = 4.42	
Enclosed Courtyard	292.84 Sq ft	4.35 × 1.6 = 6.96	
		13.57 × 13.85 = 187.94	
		6.67 × 13.32 = 88.84	
		0.85 × 0.61 = 0.52	
		1.82 × 4.71 = 8.57	

Plat Map



Location Map

