

Map legend:

- COH ADDRESS POINT
 - Preliminary
 - Permanent Address
- ROADS**
- ABANDON
 - ACCESS
 - ALLEY
 - FREEWAY
 - FRONTAGE
 - HIGHWAY
 - HOV
 - LOCAL
 - MAJOR
 - MINOR
 - PRIVATE
 - PROPOSED
 - RAMP
 - TOLLWAY

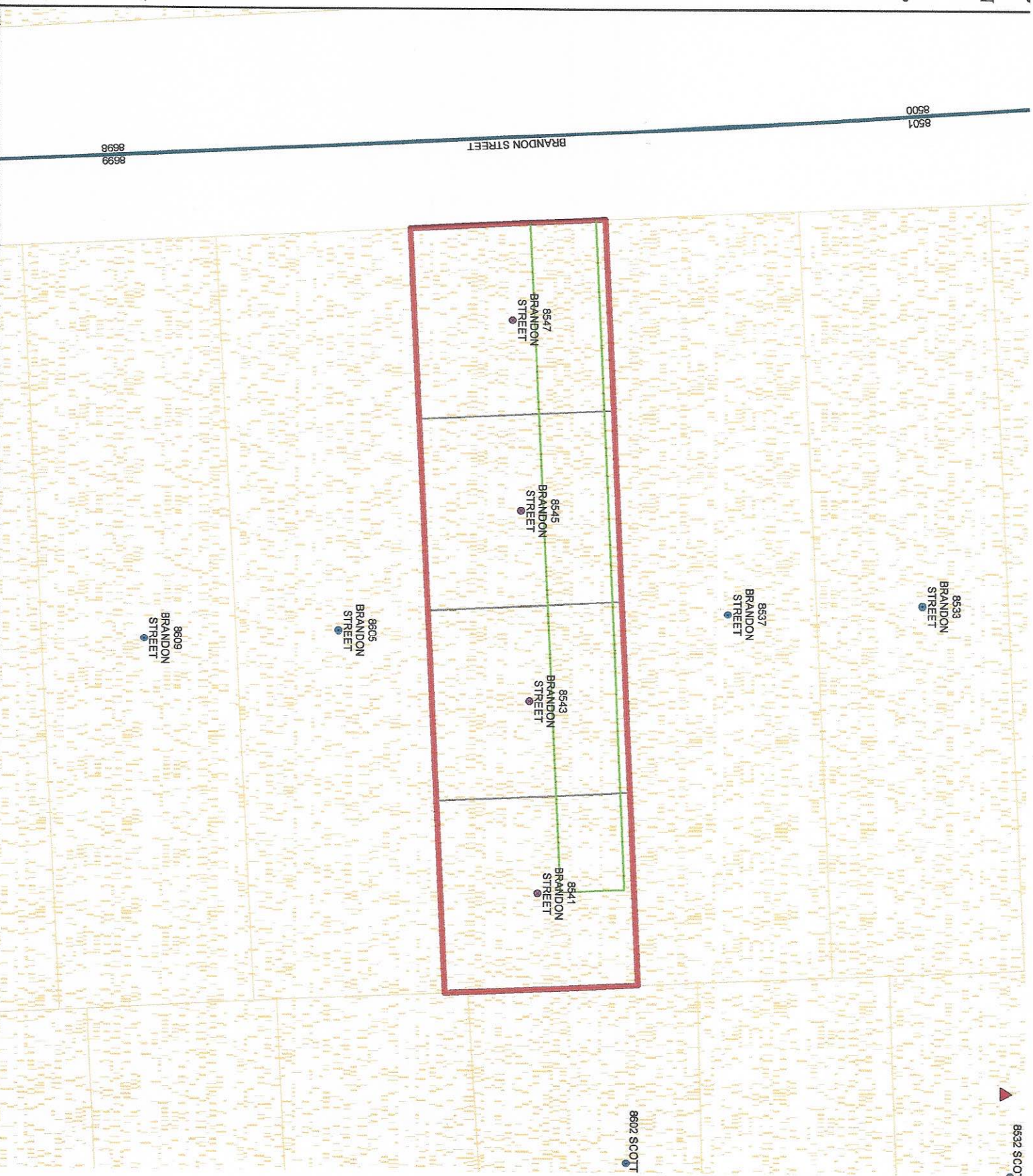
If green there has been a change on the preliminary data resulting in the creation of a new address.
If blue there has been a change on the preliminary data resulting in the modification of attributes or addresses.

Addresses on this map are considered preliminary until the parent plat has been recorded. Once recorded, address changes are handled by Code Enforcement, 00 per change.

This map is made available for reference purposes only and should not be substituted for a survey product. The City of Houston will not accept liability of any kind in conjunction with its use. All costs and new fees associated with this plat will be paid at recording.

Changes or modifications to the preliminary plat must be made on this document about your request to the Plat Tracker and plattracking@houston.gov.

Date: 9/30/2022



NEEDS CODE ENFORCEMENT FINAL APPROVAL ~ MUST ACCOMPANY RECORDED PLAT TO BE PERMITTED