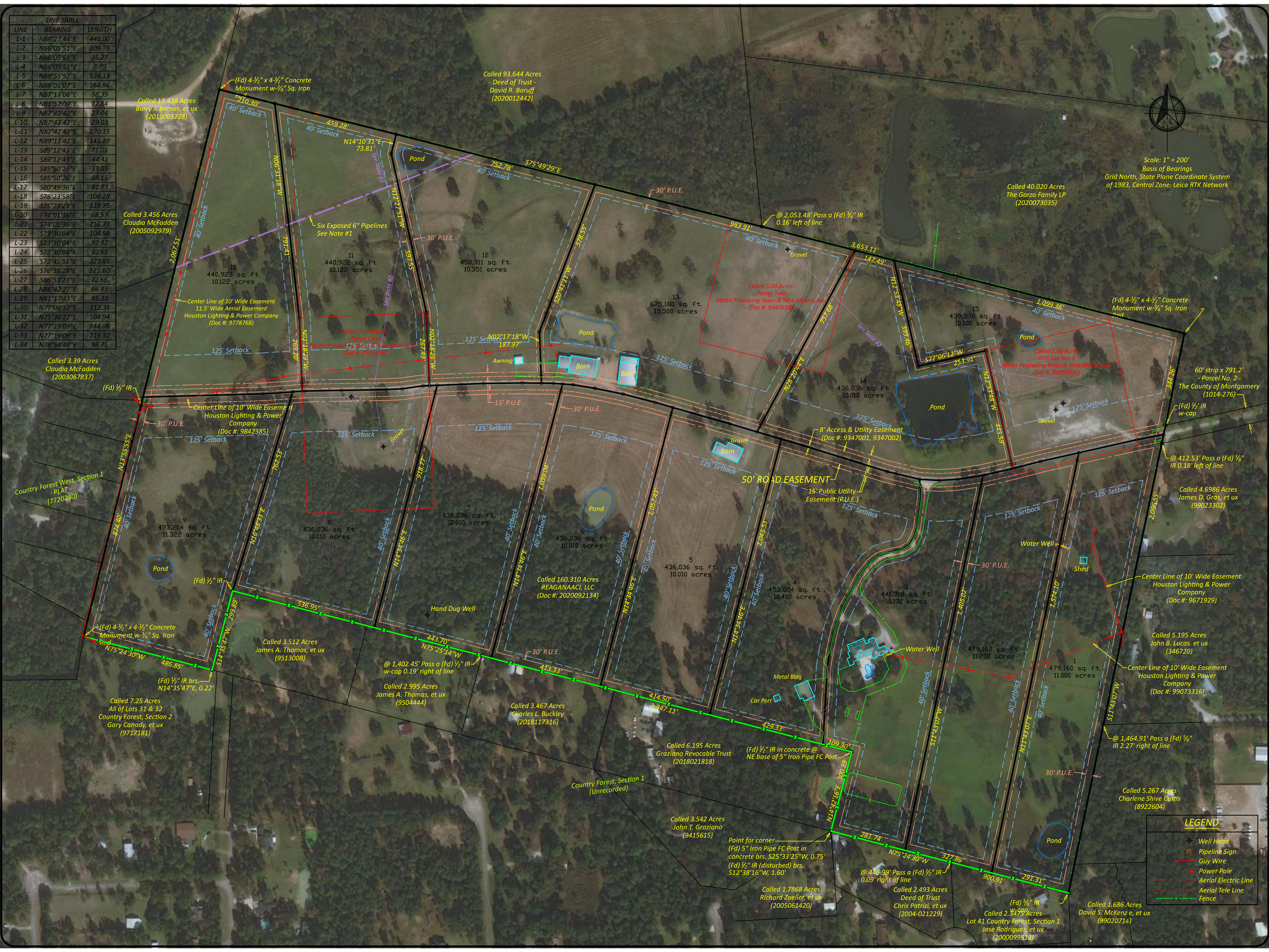


LINE	BEARING	LENGTH
L-1	N88°27'44"E	440.00'
L-2	N86°05'51"E	109.78'
L-3	N86°05'51"E	35.27'
L-4	N86°05'51"E	8.79'
L-5	N88°55'52"E	134.13'
L-6	N89°01'07"E	164.96'
L-7	N87°17'06"E	58.39'
L-8	N81°57'09"E	77.84'
L-9	N87°42'42"E	23.04'
L-10	N87°42'42"E	29.03'
L-11	N87°42'42"E	170.15'
L-12	N89°13'42"E	141.29'
L-13	S89°12'43"E	71.03'
L-14	S89°12'43"E	44.41'
L-15	S85°50'26"E	33.05'
L-16	S85°50'26"E	38.15'
L-17	S80°49'36"E	81.73'
L-18	S78°23'58"E	106.28'
L-19	S75°23'23"E	119.75'
L-20	S74°01'36"E	68.57'
L-21	S74°01'36"E	216.77'
L-22	S73°30'04"E	104.98'
L-23	S73°30'04"E	92.92'
L-24	S73°30'04"E	82.61'
L-25	S72°45'51"E	323.88'
L-26	S76°38'18"E	121.60'
L-27	S86°53'21"E	72.66'
L-28	N86°42'27"E	66.45'
L-29	N81°17'43"E	95.23'
L-30	N77°00'32"E	112.31'
L-31	N75°36'22"E	104.94'
L-32	N77°19'09"E	144.06'
L-33	N77°19'09"E	219.52'
L-34	N78°54'48"E	98.75'



Scale: 1" = 200'
Basis of Bearings
Grid North, State Plane Coordinate System
of 1983, Central Zone, Leica RTK Network



LEGEND	
	Well Head
	Pipeline Sign
	Guy Wire
	Power Pole
	Aerial Electric Line
	Aerial Tele Line
	Fence