

HOMES

Job No. L01
Scale: 1"=20'
Date: February 15, 2021
Drawn By: MBI
Field Crew: J01

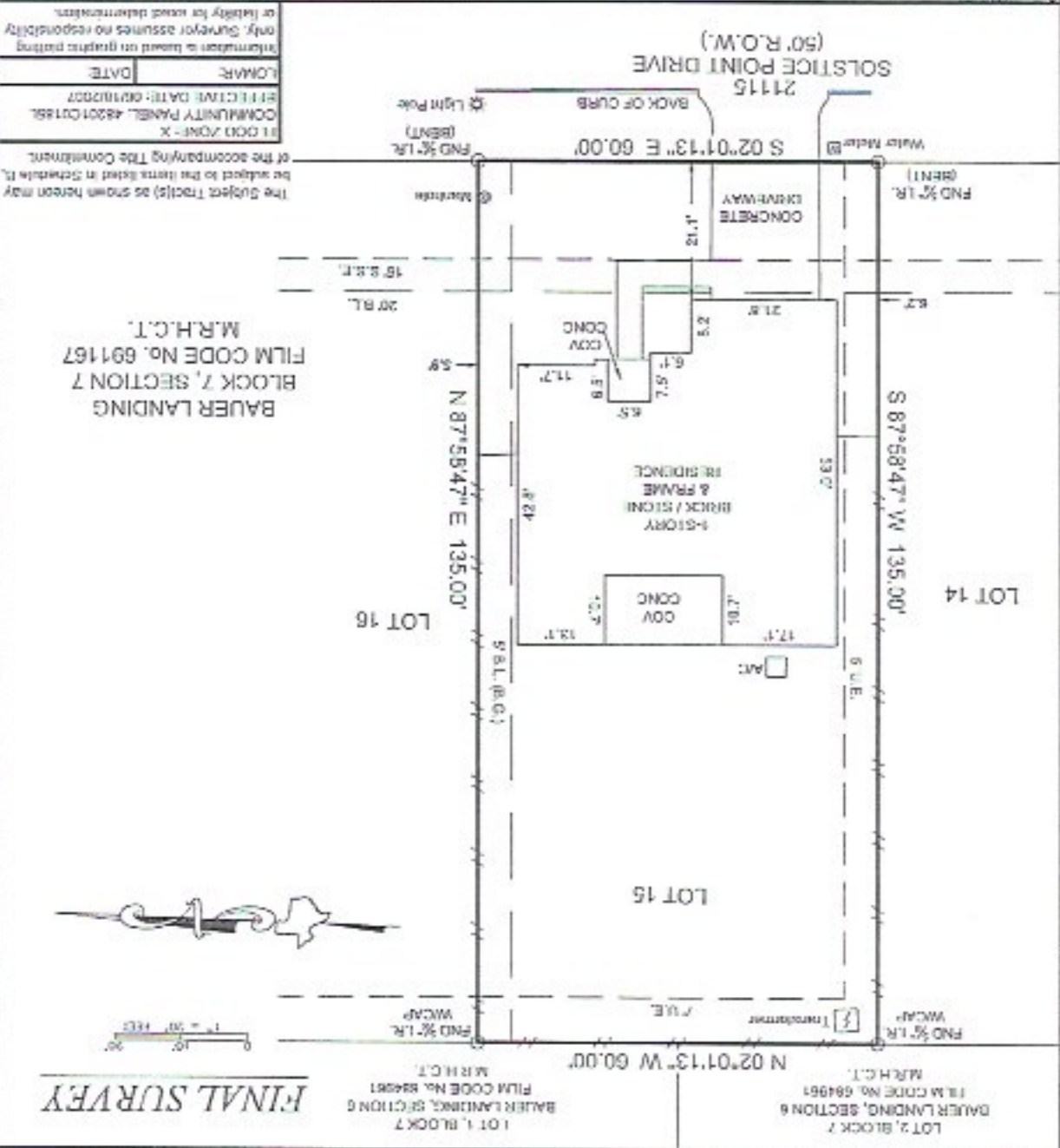
I hereby certify that this survey correctly represents the facts found at the time of survey.

Carey A. Johnson
Registered Professional Land Surveyor No. 6524

Address: 2115 Solstice Point Drive, Houston, TX 77447
Lot: 15 Block 7 Section 7
Survey: Addition Rights
Area: 8100 SQ. FT.
Subdivision: Bauer Landings
Film Code: 691167
Map: Houston
County: Harris, Texas

© 2019, Texas Professional Surveying, LLC. All Rights Reserved.

General Notes:
1) All bearings and distances are per recorded plat unless otherwise noted.
2) This survey was performed without benefit of a current title report. Surveyor does not warrant the land does not pertain to easements or restrictions not shown. Check with your local governing agencies for any additional easements, building lines or other restrictions not reflected on recorded plat.



FF - Finished Floor	FF - Finished Floor	BL - Building Line	Wood Fence
ELV - Elevation	ELV - Elevation	U.E. - Utility Easement	Wrought Iron Fence
FLY - Flycatcher	FLY - Flycatcher	(M.G.) - Rider/Guideline	Chain-link Fence
RF - Fire Hydrant	RF - Fire Hydrant	AL - Area Easement	Wire Fence
TR - Telephone Pedestal	TR - Telephone Pedestal	DL - Drainage Easement	Overhead Power Line
WV - Water Valve	WV - Water Valve	WLE - Water Line Easement	Power Line
CP - Cable Pedestal	CP - Cable Pedestal	SS.E. - Sanitary Sewer Easement	Easement Line
SM - Storm Sewer Easement	SM - Storm Sewer Easement	STN S.E. - Storm Sewer Easement	Building Line
ROW - Right-of-Way	ROW - Right-of-Way	PVT - Private	Boundary Line
TRF - Transformer	TRF - Transformer	TRF - Transformer	Survey Line
TM - Trench	TM - Trench		
SC - Sprinkler	SC - Sprinkler		
TS - Trench	TS - Trench		
IC - Ingression Control Valve	IC - Ingression Control Valve		
GV - Gas Valve	GV - Gas Valve		
CM - Gas Valve	CM - Gas Valve		
DM - Gas Valve	DM - Gas Valve		
EM - Gas Valve	EM - Gas Valve		
FM - Gas Valve	FM - Gas Valve		
GM - Gas Valve	GM - Gas Valve		
HM - Gas Valve	HM - Gas Valve		
IM - Gas Valve	IM - Gas Valve		
JM - Gas Valve	JM - Gas Valve		
KM - Gas Valve	KM - Gas Valve		
LM - Gas Valve	LM - Gas Valve		
MM - Gas Valve	MM - Gas Valve		
NM - Gas Valve	NM - Gas Valve		
OM - Gas Valve	OM - Gas Valve		
PM - Gas Valve	PM - Gas Valve		
QM - Gas Valve	QM - Gas Valve		
RM - Gas Valve	RM - Gas Valve		
SM - Gas Valve	SM - Gas Valve		
TM - Gas Valve	TM - Gas Valve		
UM - Gas Valve	UM - Gas Valve		
VM - Gas Valve	VM - Gas Valve		
WM - Gas Valve	WM - Gas Valve		
XM - Gas Valve	XM - Gas Valve		
YM - Gas Valve	YM - Gas Valve		
ZM - Gas Valve	ZM - Gas Valve		

X East - 5-17-21
 X [Signature] 5-17-21