



SYMBOL LEGEND

- Overhead Power Line
- Guy Wire
- Wood Fence
- Wrought Iron Fence
- Chainlink Fence
- Wire Fence
- Fire Hydrant
- Power Pole
- Telephone Pedestal
- Water Valve
- Water Meter
- Set from Rod w/WPS Cap
- Find from Rod

LINE	BEARING	DISTANCE
L1	N 07°18'56" W	22.47
L2	N 59°52'48" W	22.47
L3	N 60°19'45" W	40.50
L4	N 76°46'18" W	37.79
L5	N 84°36'36" W	231.06
L6	N 77°47'08" W	63.93
L7	N 42°46'23" W	68.35
L8	N 11°28'47" W	65.23
L9	N 31°52'07" W	59.44
L10	N 66°17'42" W	62.11
L11	S 79°56'43" W	111.12
L12	S 72°24'22" W	61.61
L13	S 86°59'39" W	47.09
L14	S 86°21'24" W	2225.28

MARIE WHITE, ET AL.
H.C.A.D. I.D. No. 16656

DANA REX CALHOUN
CALLED 30.773 ACRES
INSTRUMENT No. 1600018
O.P.R.H.C.T.

N 86°21'24" E 1541.93'

GEORGE G. OLIVER SURVEY
ABSTRACT No. 800

31.577 Acres

PORTION OF
EAST TEXAS HUNTING LANDS, LLC
CALLED 200.92 ACRES
VOL. 2020, PG. 1743
O.P.R.H.C.T.

REMAINDER OF
EAST TEXAS HUNTING LANDS, LLC
CALLED 200.92 ACRES
VOL. 2020, PG. 1743
O.P.R.H.C.T.

ROY C. HARRISON
INSTRUMENT No. 20002430,
O.P.R.H.C.T.

PERRY WALLACE SURVEY
ABSTRACT No. 1105

PETER WALLACE ESTATE
H.C.A.D. I.D. No. 16122

S 03°00'56" E 968.11'
APPARENT SURVEY LINE

POB
FND 2" I.P.

CARL BANKS AND
DONNA BANKS
CALLED 10 ACRES
VOL. 870, PG. 592
D.R.H.C.T.

JIMMY L. PATE AND
BILLIE J. PATE
CALLED 4.799 ACRES
VOL. 2019, PG. 336
O.P.R.H.C.T.

NANCY LEE HOCH
CALLED 4.799 ACRES
VOL. 2009, PG. 1220
O.P.R.H.C.T.

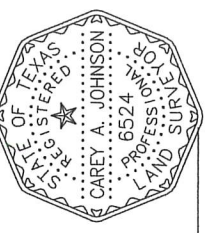
REMAINDER OF
EAST TEXAS HUNTING LANDS, LLC
CALLED 200.92 ACRES
VOL. 2020, PG. 1743
O.P.R.H.C.T.

BRENT CEMETERY ROAD
(15' ACCESS AND UTILITY EASEMENT)

SET 1/2" I.R. W/TPS CAP @ 25.00'

FND 1/2" I.P. L13
FND 1/2" I.R.

I hereby certify that this survey was made under my supervision on the ground of the above described property, and that the above plat or drawing reflects the findings on the ground of the property at this time and that this survey meets the minimum standards or practice as approved by the Texas Board of Professional Land Surveying.



Carey A. Johnson
Registered Professional Land Surveyor No. 6524

BOUNDARY SURVEY

BEING a 31.577 acre tract of land situated in the George G. Oliver Survey, Abstract Number 800, Houston County, Texas, being a portion of the remainder of that certain called 200.92 acre tract described in Instrument to East Texas Hunting Lands, LLC, recorded in Volume 2020, Page 1743 of the Official Public Records of Houston County, Texas (O.P.R.H.C.T.), said 31.577 acre tract being more particularly described by attached metes and bounds description.

General Notes:

- This survey was performed without benefit of a current title report. Surveyor did not abstract title and does not certify to easements or restrictions not shown. Check with your local governing agencies for any additional easements, building lines or other restrictions not reflected on survey.

This Property Lies in Zone X outside the 100 Year Flood Plain Per Graphic Scaling according to Community Panel No. 48225C0275D having an effective date 04/04/2011.

Job No.: U27-05 31.577AC
Scale: 1"=200'
Date: 11-25-2020
Drawn By: DJC
Field Crew: TC
Revised: _____

Purchaser: United Country Land and Timber
Address: Brent Cemetery Road, Kennard, Tx. 75847
Lot: _____ Block: _____ Section: A 800
Survey: George G. Oliver
Area: 31.577 Acres
Subdivision: _____ Sheet: _____ Records Cabinet: _____ County: Texas

Bearings shown hereon are based on GPS observations and are referenced to Basis of Bearings the NAD83, Texas State Plane Coordinate System, Central Zone (4203).

TEXAS
PROFESSIONAL
SURVEYOR
3032 N. FRAZIER STREET, CONROE, TX 77383
PH (936) 756-7447 - FAX (936) 756-7448
WWW.SURVINGINTEXAS.COM
FIRM REGISTRATION No. 101634-00



TEXAS PROFESSIONAL SURVEYING, LLC.

3032 N. FRAZIER STREET, CONROE, TEXAS 77303
(936)756-7447 FAX (936)756-7448
FIRM REGISTRATION No. 100834-00

FIELD NOTE DESCRIPTION
31.577 ACRES
IN THE GEORGE G. OLIVER SURVEY, ABSTRACT NUMBER 800,
HOUSTON COUNTY, TEXAS

BEING a 31.577 acre tract of land situated in the George G. Oliver Survey, Abstract Number 800, Houston County, Texas, being a portion of the remainder of that certain called 200.92 acre tract described in instrument to East Texas Hunting Lands, LLC, recorded in Volume 2020, Page 1743 of the Official Public Records of Houston County, Texas (O.P.R.H.C.T.), said 31.577 acre tract being more particularly described by metes and bounds as follows:

BEGINNING at a 2 inch iron pipe found in the apparent common line between said Oliver Survey and the Perry Wallace Survey, Abstract No. 1105, the westerly line of that certain tract described in instrument to Roy C. Harrison, recorded in Instrument Number 20002430, O.P.R.H.C.T., for the common easterly corner of said 200.92 acre tract and that certain called 10 acre tract described in instrument to Carl Bank and Donna Banks, recorded in Volume 870, Page 592 of the Deed Records of Houston County, Texas (D.R.H.C.T.), being the southeasterly corner of the herein described 31.577 acre tract;

• THENCE South 86°59'39" West, 862.21 feet, with the northerly line of said 10 acre tract, that certain called 4.799 acre tract described in instrument to Jimmy L. Pate and Billie J. Pate, recorded in Volume 2019, Page 336, O.P.R.H.C.T., and Brent Cemetery Road, to a ½ inch iron rod found at a bend in said road for the common northerly corner of said Pate 4.799 acre tract and that certain called 4.799 acre tract described in instrument to Nancy Lee Hoch, recorded in Volume 2000, Page 1220, O.P.R.H.C.T., being the southwesterly corner of the herein described 31.577 acre tract, from which a ¼ inch iron pipe found for an interior corner of said 200.92 acre tract bears South 86°59'39" West, 47.09 feet;

THENCE severing said 200.92 acre tract, along the approximate centerline of said Brent Cemetery Road, the following twelve (12) courses and distances:

- 1) North 09°15'55" West, 15.71 feet, to a calculated point for corner;
- 2) North 59°55'48" West, 22.42 feet, to a calculated point for corner;
- 3) North 60°19'45" West, 40.50 feet, to a calculated point for corner;
- 4) North 76°46'18" West, 37.79 feet, to a calculated point for corner;
- 5) North 84°36'36" West, 231.06 feet, to a calculated point for corner;
- 6) North 77°47'08" West, 63.93 feet, to a calculated point for corner;
- 7) North 42°46'23" West, 68.35 feet, to a calculated point for corner;
- 8) North 11°28'47" West, 65.23 feet, to a calculated point for corner;
- 9) North 31°52'07" West, 59.44 feet, to a calculated point for corner;
- 10) North 66°17'42" West, 62.11 feet, to a calculated point for corner;
- 11) South 79°56'43" West, 111.12 feet, to a calculated point for corner;

12) South 72°24'22" West, 61.61 feet, to a ½ inch iron rod with cap stamped "TPS 100834-00" set for the most westerly southwest corner of the herein described 31.577 acre tract;

THENCE North 02°15'30" West, continuing across said 200.92 acre tract, at a distance of 25.00 feet, pass a ½ inch iron rod with cap stamped "TPS 100834-00" set for reference, in all, a total distance of 672.33 feet to a ½ inch iron rod with cap stamped "TPS 100834-00" set in the common line of said 200.92 acre tract and a called 31.031 acre tract described in instrument to Jimmy Wayne Wood, recorded in Clerk's File No. 1902717, O.P.R.H.C.T., for the northwesterly corner of the herein described 31.577 acre tract, from which a ½ inch iron rod with cap found for reference bears South 86°21'24" West, 2,225.28 feet;

THENCE North 86°21'24" East, 1,541.93 feet, with the southerly line of said 31.031 acre tract, a called 30.773 acre tract described in instrument to Dana Rex Calhoun, recorded in Instrument Number 1600018, O.P.R.H.C.T., and a tract shown to be owned by Marie White, et al, per H.C.A.D. ID No. 16656, common to the northerly line of said 200.92 acre tract, to a ½ inch iron rod with cap found in the apparent common line between said Oliver and Wallace Surveys, the westerly line of a tract shown to be owned by Peter Wallace Estate, per HCAD ID No. 16122, for the common easterly corner of said 200.92 acre tract and said Marie White tract, being the northeasterly corner of the herein described 31.577 acre tract;

THENCE South 03°00'56" East, 968.11 feet, along the apparent common line between said Oliver and Wallace Surveys, with the westerly line of said Wallace Estate tract and said Harrison tract, common to the easterly line of said 200.92 acre tract, to the **PLACE OF BEGINNING**;

CONTAINING a computed area of 31.577 acres of land within this Field Note Description.

This Field Note Description was prepared from a survey performed on the ground on November 25, 2020 by Texas Professional Surveying, LLC., Registered Professional Land Surveyors and is referenced to Survey Drawing Project Number U27-05_31.577AC.

Bearings recited hereon are based on GPS observations and are referenced to the North American Datum (NAD) 1983, Texas State Plane Coordinate System, Central Zone (4203).

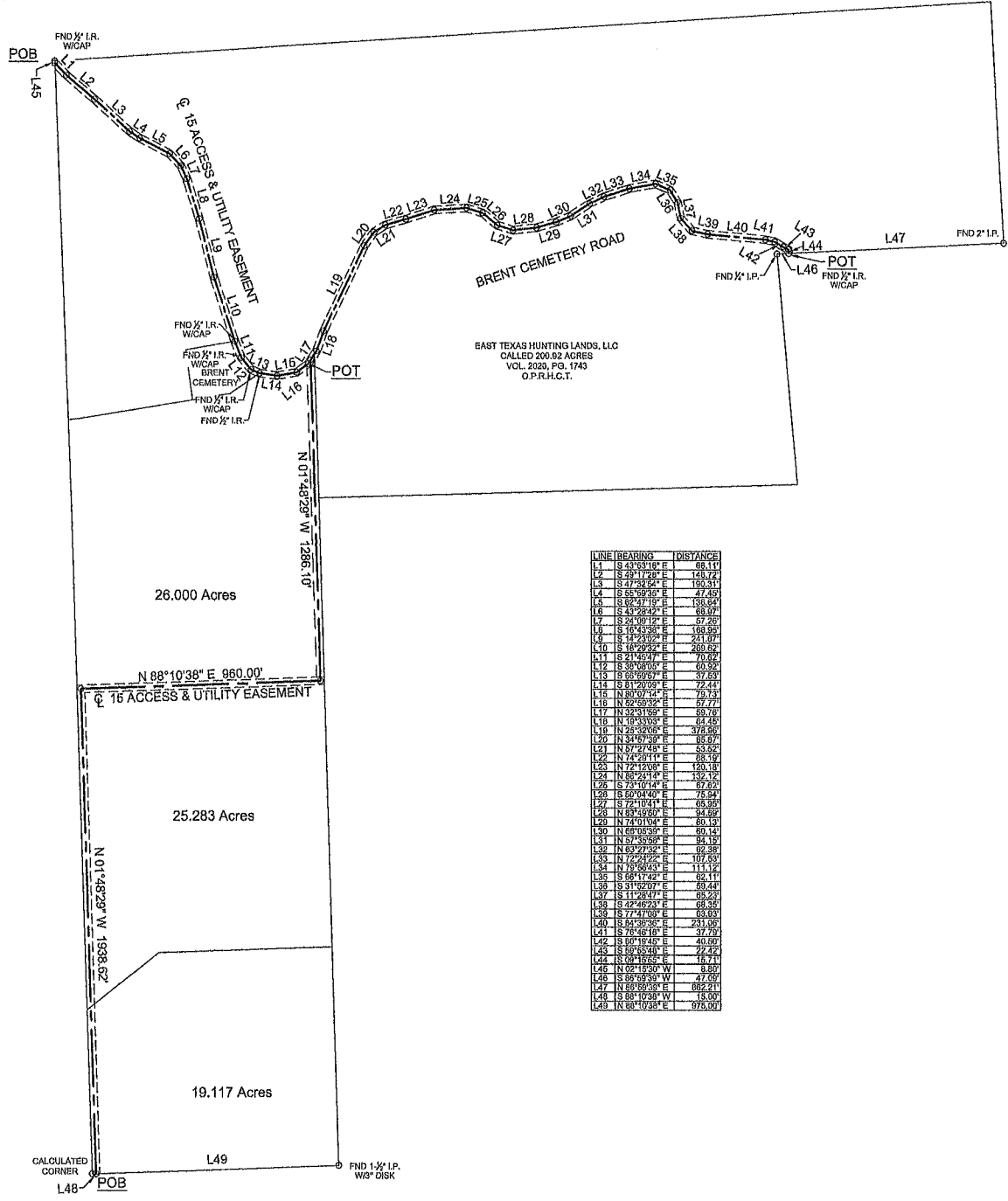
November 30, 2020
Date



Carey A. Johnson
R.P.L.S. No. 6524



- SYMBOL LEGEND**
- - - Overhead Power Line
 - - - Day Wire
 - - - Wood Fence
 - - - Wrought Iron Fence
 - - - Chainlink Fence
 - - - Wire Fence
 - - - Fire Hydrant
 - - - Power Pole
 - - - Telephone Pedestal
 - - - Water Valve
 - - - Water Meter
 - - - Set Iron Rod w/TPS Cap
 - - - Find Iron Rod



LINE	BEARING	DISTANCE
L1	S 43° 31' 19\"	88.11
L2	S 29° 17' 28\"	148.22
L3	S 47° 32' 22\"	150.31
L4	S 62° 56' 28\"	47.40
L5	S 82° 27' 19\"	138.54
L6	S 43° 28' 42\"	89.97
L7	S 43° 28' 42\"	97.40
L8	S 16° 43' 38\"	188.95
L9	S 16° 43' 38\"	211.87
L10	S 16° 43' 38\"	200.62
L11	S 21° 26' 47\"	70.82
L12	S 58° 56' 03\"	60.92
L13	S 88° 56' 03\"	37.63
L14	S 81° 20' 59\"	72.44
L15	N 80° 57' 38\"	79.73
L16	N 82° 52' 38\"	92.77
L17	N 32° 11' 59\"	59.76
L18	N 19° 03' 33\"	24.43
L19	N 26° 22' 03\"	37.50
L20	N 34° 47' 38\"	85.87
L21	N 77° 47' 03\"	53.92
L22	N 74° 30' 11\"	88.39
L23	N 72° 22' 03\"	120.18
L24	N 89° 27' 42\"	132.72
L25	S 73° 10' 14\"	87.67
L26	S 60° 04' 40\"	75.54
L27	S 72° 10' 41\"	65.98
L28	N 83° 46' 59\"	84.89
L29	N 74° 11' 04\"	80.19
L30	N 88° 05' 03\"	89.44
L31	N 87° 35' 58\"	84.19
L32	N 89° 27' 38\"	82.38
L33	N 72° 22' 03\"	117.60
L34	N 18° 56' 03\"	111.12
L35	S 88° 17' 42\"	82.11
L36	S 81° 02' 07\"	92.43
L37	S 11° 28' 47\"	85.23
L38	S 72° 46' 23\"	88.30
L39	S 77° 11' 03\"	83.83
L40	S 84° 38' 36\"	231.09
L41	S 69° 16' 10\"	37.99
L42	S 69° 16' 10\"	40.87
L43	S 69° 53' 48\"	22.42
L44	S 89° 10' 55\"	16.77
L45	N 02° 19' 30\"	8.00
L46	S 89° 58' 39\"	47.09
L47	N 89° 58' 39\"	62.21
L48	S 88° 10' 38\"	15.00
L49	N 88° 10' 38\"	975.00

15' ACCESS EASEMENT EXHIBIT

BEING a 30 foot Access and Utility Easement, (Easement), situated in the George O. Oliver Survey Abstract Number 800, Houston County, Texas, being over and across a portion of that certain called 200.92 acre tract, described in Instrument to East Texas Hunting Lands, L.L.C., recorded in Volume 2020, Page 1743, of the Official Public Records of Houston County, Texas (O.P.R.H.C.T.), said Easement being more particularly described by attached metes and bounds description.

BEING a 30 foot Access and Utility Easement, (Easement), situated in the George O. Oliver Survey Abstract Number 800, and in the E. L. Beard Survey, Abstract Number 228, Houston County, Texas, being over and across a portion of that certain called 200.92 acre tract, described in Instrument to East Texas Hunting Lands, L.L.C., recorded in Volume 2020, Page 1743, of the Official Public Records of Houston County, Texas (O.P.R.H.C.T.), said Easement being more particularly described by attached metes and bounds description.

I hereby certify that this survey was this day made under my supervision on the ground of the above described property, and that the above plot or drawing reflects the findings on the ground of the property at this time and that this survey meets the minimum standards of practice as approved by the Texas Board of Professional Land Surveying.



Carey A. Johnson
 Carey A. Johnson
 Registered Professional Land Surveyor No. 6524



3032 N. FRAZIER STREET - CONROCK, TX 77203
 PH (832) 756-7447 - FAX (832) 756-7448
 WWW.SHTVUYINGISLANDS.COM
 FPLS REGISTRATION NO. 00084-00

Bearings shown hereon are based on GPS observations and are referenced to
 Basis of Bearings the NAD83, Texas State Plane Coordinate System, Central Zone (4203).



TEXAS PROFESSIONAL SURVEYING, LLC.

3032 N. FRAZIER STREET, CONROE, TEXAS 77303
(936)756-7447 FAX (936)756-7448
FIRM REGISTRATION No. 100834-00

FIELD NOTE DESCRIPTION 30 FOOT ACCESS AND UTILITY EASEMENT IN THE GEORGE G. OLIVER SURVEY, ABSTRACT NUMBER 800 HOUSTON COUNTY, TEXAS

BEING a 30 foot Access and Utility Easement, (Easement), situated in the George G. Oliver Survey Abstract Number 800, Houston County, Texas, being over and across a portion of that certain called 200.92 acre tract, described in instrument to East Texas Hunting Lands, LLC, recorded in Volume 2020, Page 1743, of the Official Public Records of Houston County, Texas (O.P.R.H.C.T.), said Easement being more particularly described by metes and bounds as follows:

BEGINNING at a calculated point in the approximate centerline of Brent Cemetery Road at the intersection of the westerly line of said 200.92 acre tract, from which a ½ inch iron rod with cap found for the northwesterly corner of aid 200.92 acre tract, bears North 02°15'30" West, 8.80 feet;

THENCE with the approximate centerline of said Brent Cemetery Road the following forty-four (44) courses and distances, lying 15 feet adjacent and parallel to the following centerline description.:

1. South 43°53'16" East, 66.11 feet, to a calculated point for corner;
2. South 49°17'28" East, 148.72 feet, to a calculated point for corner;
3. South 47°32'54" East, 190.31 feet, to a calculated point for corner;
4. South 55°59'35" East 47.45 feet, to a calculated point for corner;
5. South 62°47'19" East, 136.64 feet, to a calculated point for corner;
6. South 43°28'42" East, 66.97 feet, to a calculated point for corner;
7. South 24°09'12" East, 57.26 feet, to a calculated point for corner;
8. South 16°43'38" East, 168.95 feet, to a calculated point for corner;
9. South 14°23'02" East, 241.67 feet, to a calculated point for corner;
10. South 18°29'32" East, 269.62 feet, to a ½ inch iron rod with cap found for corner;
11. South 21°45'47" East, 70.62 feet, to a ½ inch iron rod with cap found for corner;
12. South 38°08'05" East, 60.92 feet, to a ½ inch iron rod with cap found for corner;
13. South 66°59'57" East, 37.53 feet, to a ½ inch iron rod found for corner;
14. South 81°20'09" East, 72.44 feet, to a calculated point for corner;
15. North 80°07'14" East, 79.73 feet, to a calculated point for corner;
16. North 52°59'32" East, 57.77 feet, to a calculated point for corner;
17. North 32°31'59" East, 59.76 feet, to a calculated point for corner;
18. North 19°33'03" East, 84.45 feet, to a calculated point for corner;
19. North 25°32'06" East, 378.96 feet, to a calculated point for corner;
20. North 34°57'39" East, 65.87 feet, to a calculated point for corner;
21. North 57°27'48" East, 53.52 feet, to a calculated point for corner;
22. North 74°29'11" East, 88.19 feet, to a calculated point for corner;
23. North 72°12'08" East, 120.18 feet, to a calculated point for corner;
24. North 86°24'14" East, 132.12 feet, to a calculated point for corner;
25. South 73°10'14" East, 67.62 feet, to a calculated point for corner;
26. South 50°04'40" East, 75.94 feet, to a calculated point for corner;
27. South 72°10'41" East 65.95 feet, to a calculated point for corner;

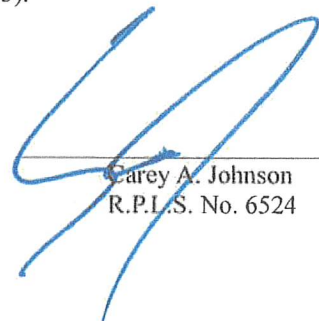
28. North 83°49'50" East, 94.59 feet, to a calculated point for corner;
29. North 74°01'04" East 80.13 feet, to a calculated point for corner;
30. North 66°05'39" East, 60.14 feet, to a calculated point for corner;
31. North 57°35'58" East, 94.15 feet, to a calculated point for corner;
32. North 63°27'32" East, 62.38 feet, to a calculated point for corner;
33. North 72°24'22" East, 107.53 feet, to a calculated point for corner;
34. North 79°56'43" East, 111.12 feet, to a calculated point for corner;
35. South 66°17'42" East, 62.11 feet, to a calculated point for corner;
36. South 31°52'07" East, 59.44 feet, to a calculated point for corner;
37. South 11°28'47" East 65.23 feet, to a calculated point for corner;
38. South 42°46'23" East, 68.35 feet, to a calculated point for corner;
39. South 77°47'08" East, 63.93 feet, to a calculated point for corner;
40. South 84°36'36" East, 231.06 feet, to a calculated point for corner;
41. South 76°46'18" East, 37.79 feet, to a calculated point for corner;
42. South 60°19'45" East, 40.50 feet, to a calculated point for corner;
43. South 59°55'48" East, 22.42 feet, to a calculated point for corner;
44. South 09°15'55" East 15.71 feet, to a ½ inch iron rod with cap found for in the most easterly south line of said 200.92 acre tract for the **POINT OF TERMINUS**, from which a ¼ inch iron pipe found for an interior corner of said 200.92 acre tract, bears South 86°59'39" West, 47.09 feet and a 2 inch iron pipe found for the most easterly southeast corner of said 200.92 acre tract, bears, North 86°59'39" East, 862.21 feet

This Field Note Description was prepared from a survey performed on the ground on August 13, 2020 by Texas Professional Surveying, LLC., Registered Professional Land Surveyors and is referenced to Survey Drawing Project Number U27-05.

Bearings recited hereon are based on GPS observations and are referenced to the North American Datum (NAD) 1983, Texas State Plane Coordinate System, Central Zone (4203).

August 18, 2020
Date




Carey A. Johnson
R.P.L.S. No. 6524