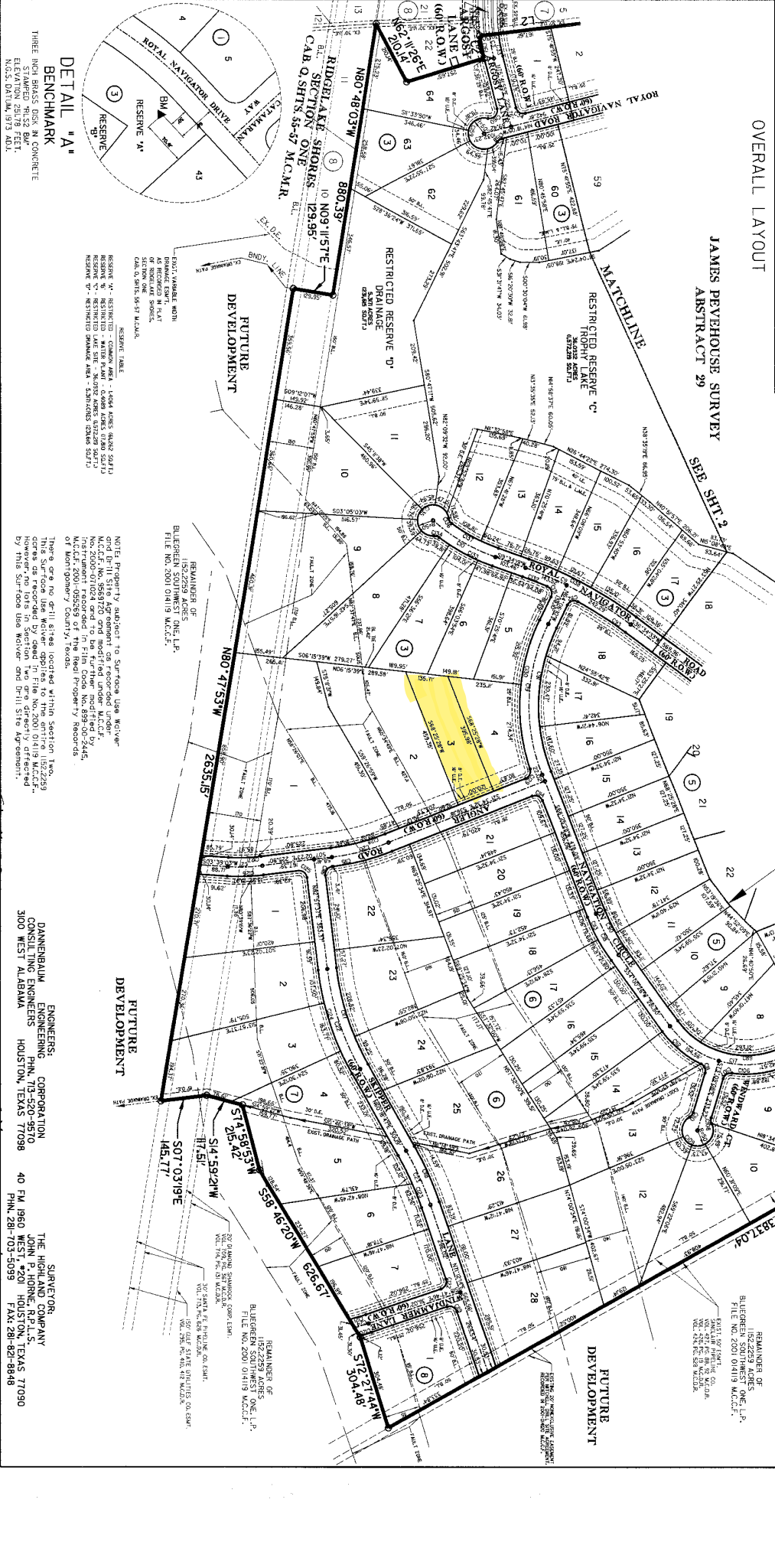
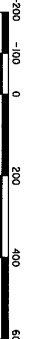


OVERALL LAYOUT



- NOTES:**
1. NO HOME, BUILDING OR FENCE CONSTRUCTION WITHIN 100' FEET FLOODWAY.
  2. SIDE BUILDING SETBACK LINES ARE A MINIMUM OF FIFTEEN (15) FEET UNLESS OTHERWISE NOTED.
  3. LOTS 1, 2, 3, 4, 5, 6, 7, 8, 9, 10, 11, 12, 13, 14, 15, 16, 17, 18, 19, 20, 21, 22, 23, 24, 25, 26, 27, 28, 29, 30, 31.
  4. BOLLING LINE
  5. BOLLING LINE
  6. BOLLING LINE
  7. BOLLING LINE
  8. BOLLING LINE
  9. BOLLING LINE
  10. BOLLING LINE
  11. BOLLING LINE
  12. BOLLING LINE
  13. BOLLING LINE
  14. BOLLING LINE
  15. BOLLING LINE
  16. BOLLING LINE
  17. BOLLING LINE
  18. BOLLING LINE
  19. BOLLING LINE
  20. BOLLING LINE
  21. BOLLING LINE
  22. BOLLING LINE
  23. BOLLING LINE
  24. BOLLING LINE
  25. BOLLING LINE
  26. BOLLING LINE
  27. BOLLING LINE
  28. BOLLING LINE
  29. BOLLING LINE
  30. BOLLING LINE
  31. BOLLING LINE
- NOTE:**
- THE RESIDENTIAL LOTS SHALL BE SERVED BY INDIVIDUAL HOME SEWER TREATMENT SYSTEMS. INSTALLATION AND OPERATION OF HOME SEWER TREATMENT SYSTEMS SHALL BE IN ACCORDANCE WITH THE APPLICABLE CODES AND REGULATIONS AND THE PROJECT'S GOVERNMENT CONDITIONS AND RESTRICTIONS FOR FLOODABLE ZONES. SECTION 7.02.
- NOTE:**
- RESTRICTIONS FOR FLOODABLE ZONES ARE SET FORTH UNLESS OTHERWISE NOTED.



SCALE 1"=200'

**OWNER:**  
**FIDELITY NATIONAL TITLE INSURANCE COMPANY**  
 10201 DEERWOOD PARK BLVD SUITE 102  
 JACKSONVILLE, FLORIDA 32256  
 PHONE : 904-854-8900  
 FAX : 904-854-1602

**OWNER:**  
**BLURGREN SOUTHWEST ONE, L.P.**  
 14500 RANCH ROAD 12, SUITE 2  
 WIMBERLEY, TEXAS 78676  
 PHONE : 512-244-4483  
 FAX : 512-244-5414

**FINAL PLAT**  
 OF  
**RIDGELAKE SHORES**  
**SECTION TWO**  
 (RECORDED IN C.A.B. IN SHRS. 12-2-05 M.C.C.F.)  
**AMENDING PLAT NO. 1**  
 BEING

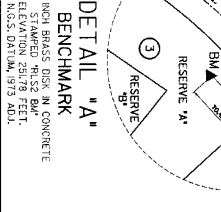
**352,747 ACRES OF LAND**  
 CONTAINING  
 8 BLOCKS  
 217 LOTS  
 4 RESERVES  
 43,245 ACRES IN RESERVE

**MARY CORNER SURVEY, ABSTRACT 9**  
**JAMES PEVEHOUSE SURVEY, ABSTRACT 29**  
 MONTGOMERY COUNTY, TEXAS  
 REASON FOR CORRECT BOUNDARY SURVEYERS ERRORS  
 ON THE NORTH AND WEST SIDES OF THE BLOCK TRACT  
 SCALES 1"=200'

REMAINER OF  
 352,747 ACRES  
 BLURGREN SOUTHWEST ONE, L.P.  
 FILE NO. 2001 04119 M.C.C.F.

REMAINER OF  
 352,747 ACRES  
 JAMES PEVEHOUSE SURVEY, ABSTRACT 29  
 FILE NO. 2001 04119 M.C.C.F.

REMAINER OF  
 352,747 ACRES  
 MARY CORNER SURVEY, ABSTRACT 9  
 FILE NO. 2001 04119 M.C.C.F.



**DETAIL "A"**  
 BENCHMARK  
 THREE INCH BRASS DISK IN CONCRETE  
 STAMPED "HLSZ BMT"  
 ELEVATION 123.95 FEET  
 NAD83, SAN VAN 557.001.

**RESERVE TABLE**

RESERVE NO.	RESERVE TYPE	RESERVE AREA	RESERVE PERCENT
1	RESTRICTED RESERVE 'A'	1.00 ACRES	0.0003%
2	RESTRICTED RESERVE 'B'	1.00 ACRES	0.0003%
3	RESTRICTED RESERVE 'C'	1.00 ACRES	0.0003%
4	RESTRICTED RESERVE 'D'	1.00 ACRES	0.0003%
5	RESTRICTED RESERVE 'E'	1.00 ACRES	0.0003%
6	RESTRICTED RESERVE 'F'	1.00 ACRES	0.0003%
7	RESTRICTED RESERVE 'G'	1.00 ACRES	0.0003%
8	RESTRICTED RESERVE 'H'	1.00 ACRES	0.0003%
9	RESTRICTED RESERVE 'I'	1.00 ACRES	0.0003%
10	RESTRICTED RESERVE 'J'	1.00 ACRES	0.0003%
11	RESTRICTED RESERVE 'K'	1.00 ACRES	0.0003%
12	RESTRICTED RESERVE 'L'	1.00 ACRES	0.0003%
13	RESTRICTED RESERVE 'M'	1.00 ACRES	0.0003%
14	RESTRICTED RESERVE 'N'	1.00 ACRES	0.0003%
15	RESTRICTED RESERVE 'O'	1.00 ACRES	0.0003%
16	RESTRICTED RESERVE 'P'	1.00 ACRES	0.0003%
17	RESTRICTED RESERVE 'Q'	1.00 ACRES	0.0003%
18	RESTRICTED RESERVE 'R'	1.00 ACRES	0.0003%
19	RESTRICTED RESERVE 'S'	1.00 ACRES	0.0003%
20	RESTRICTED RESERVE 'T'	1.00 ACRES	0.0003%
21	RESTRICTED RESERVE 'U'	1.00 ACRES	0.0003%
22	RESTRICTED RESERVE 'V'	1.00 ACRES	0.0003%
23	RESTRICTED RESERVE 'W'	1.00 ACRES	0.0003%
24	RESTRICTED RESERVE 'X'	1.00 ACRES	0.0003%
25	RESTRICTED RESERVE 'Y'	1.00 ACRES	0.0003%
26	RESTRICTED RESERVE 'Z'	1.00 ACRES	0.0003%
27	RESTRICTED RESERVE 'AA'	1.00 ACRES	0.0003%
28	RESTRICTED RESERVE 'AB'	1.00 ACRES	0.0003%
29	RESTRICTED RESERVE 'AC'	1.00 ACRES	0.0003%
30	RESTRICTED RESERVE 'AD'	1.00 ACRES	0.0003%
31	RESTRICTED RESERVE 'AE'	1.00 ACRES	0.0003%

**REMAINER OF**  
 352,747 ACRES  
 BLURGREN SOUTHWEST ONE, L.P.  
 FILE NO. 2001 04119 M.C.C.F.

**REMAINER OF**  
 352,747 ACRES  
 JAMES PEVEHOUSE SURVEY, ABSTRACT 29  
 FILE NO. 2001 04119 M.C.C.F.

**REMAINER OF**  
 352,747 ACRES  
 MARY CORNER SURVEY, ABSTRACT 9  
 FILE NO. 2001 04119 M.C.C.F.

**DATE:** 2005-06-28  
**DRAWN BY:** [Name]

**ENGINEERS:**  
**THE HIGHLAND COMPANY**  
 40 FM 1860 WEST, #201  
 HOUSTON, TEXAS 77098  
 PHONE: 281-703-5099  
 FAX: 281-921-8848

**ENGINEERS:**  
**BLURGREN SOUTHWEST ONE, L.P.**  
 40 FM 1860 WEST, #201  
 HOUSTON, TEXAS 77098  
 PHONE: 281-703-5099  
 FAX: 281-921-8848

**ENGINEERS:**  
**JAMES PEVEHOUSE SURVEY, ABSTRACT 29**  
 40 FM 1860 WEST, #201  
 HOUSTON, TEXAS 77098  
 PHONE: 281-703-5099  
 FAX: 281-921-8848

**ENGINEERS:**  
**MARY CORNER SURVEY, ABSTRACT 9**  
 40 FM 1860 WEST, #201  
 HOUSTON, TEXAS 77098  
 PHONE: 281-703-5099  
 FAX: 281-921-8848