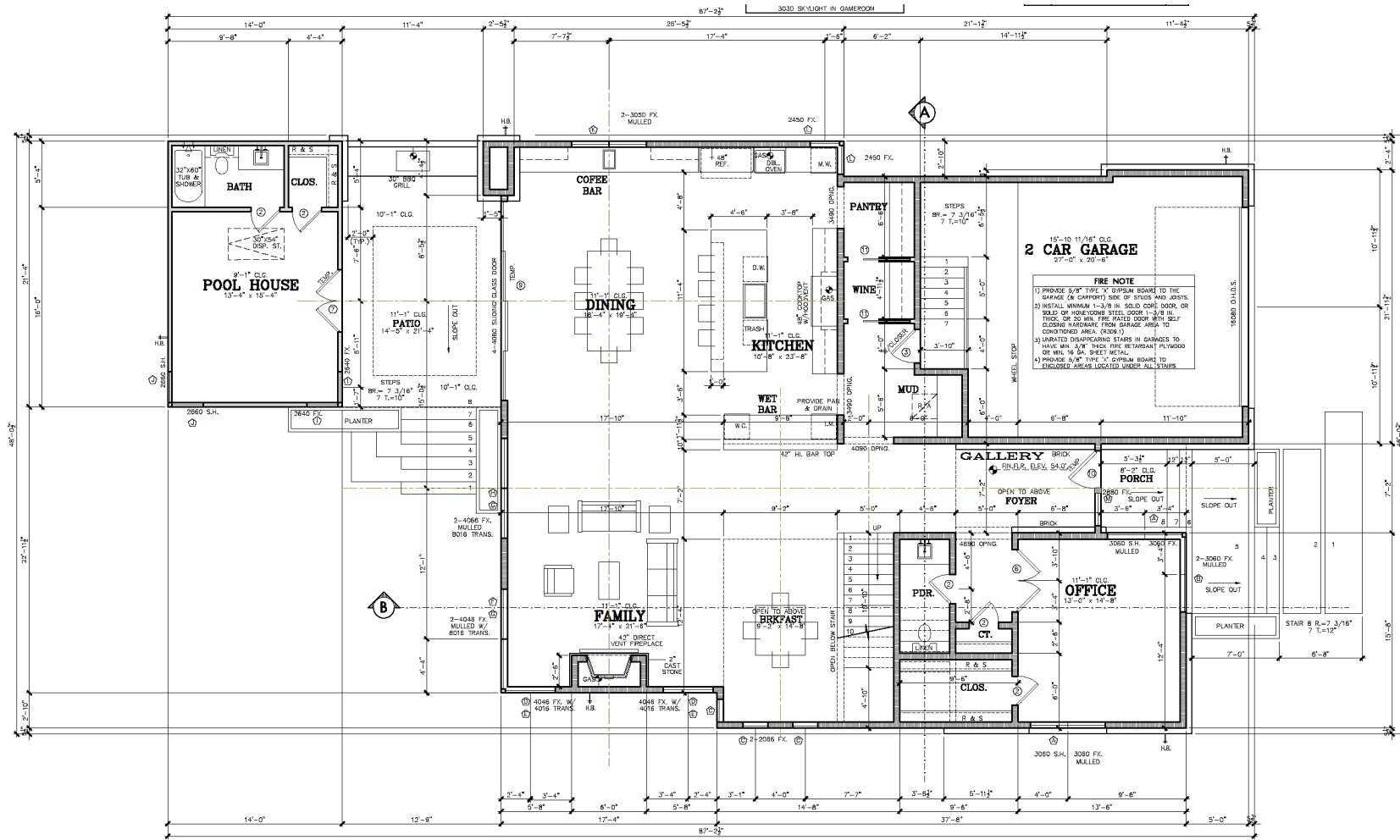


# SCALE<sup>®</sup>

DESIGN + BUILD

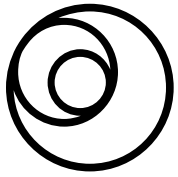
832.380.4289 | www.scaledesignbuild.com

# 4022 Merrick Street



## FIRST FLOOR

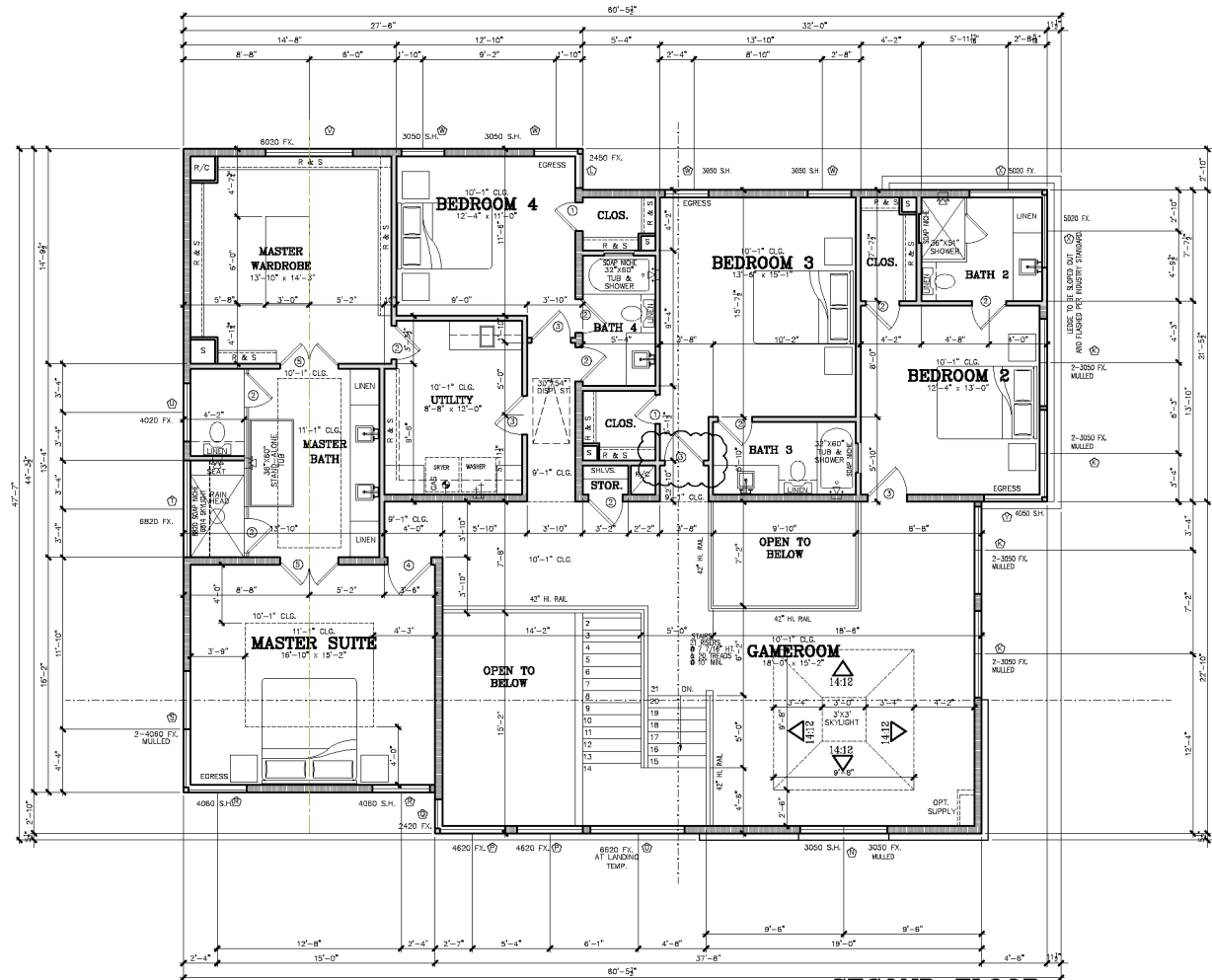
SCALE: 1/4" = 1'-0" 10'-11" CEILINGS U.N.O.  
DRAWN BY P.M. PLECHINA, SET BY B.H. HENRI



**SCALE**<sup>®</sup>  
DESIGN + BUILD

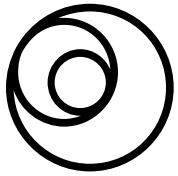
832.380.4289 | www.scaledesignbuild.com

# 4022 Merrick Street



## SECOND FLOOR

SCALE: 1/4" = 1'-0" 10'-1" CEILING U.L.O.  
SUGGESTED FLOOR SYSTEM: 22" TRUSSES  
ALL SOUP INCHES 25/32" U.L.O.  
FIELD VERIFY RETURN AIR LOCATIONS



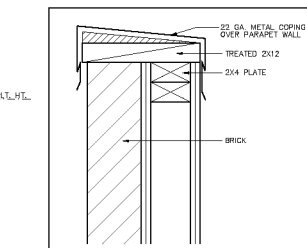
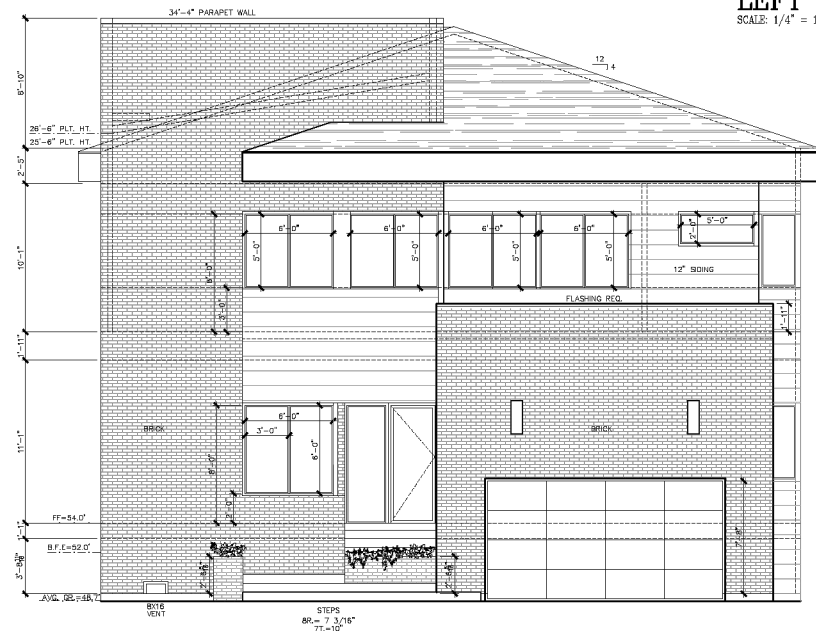
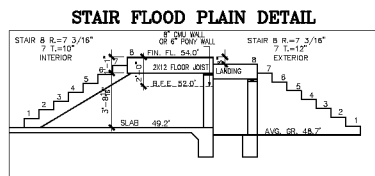
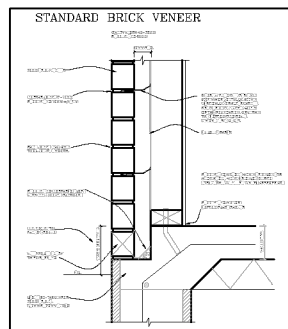
**SCALE**<sup>®</sup>  
DESIGN + BUILD

832.380.4289 | www.scaledesignbuild.com

4022 Merrick Street



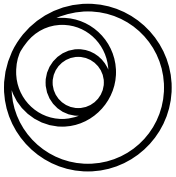
**LEFT ELEVATION**  
SCALE: 1/4" = 1'-0"



**METAL CAP DETAIL**  
SCALE: 3" = 1'-0"

**FRONT ELEVATION**

SCALE: 1/4" = 1'-0"  
PRIMARY EXTERIOR MATERIAL: STUCCO  
SECONDARY EXTERIOR MATERIAL: BRICK/FIBER CEMENT BOARD  
ROOF MATERIAL: COMPOSITION SHINGLES  
ALL DOOR AND WINDOW ASSEMBLIES TO HAVE MATCHING BRICK MOLD OR EQUAL SURROUNDS.  
MATCH TRANSOMS TO UNITS BELOW.  
HEAD HEIGHTS TAKEN FROM IMMEDIATE INTERIOR FLOOR LEVEL.  
SOFFIT AND RIDGE VENTING PER BUILDER SPEC'S.  
SLOPE BALCONES FOR DRAIN OFF  
PROVIDE SECURITY HINGES ON ALL OUT-SWINGING EXTERIOR DOORS.  
FLASH ALL PLACES WHERE MATERIAL TRANSITIONS TO ANOTHER MATERIAL PER INDUSTRY STANDARDS.



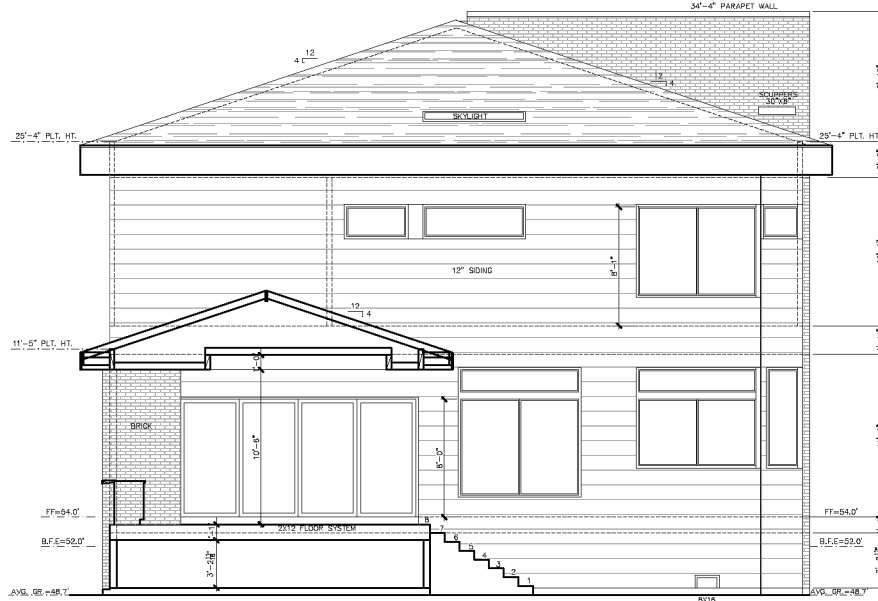
**SCALE**<sup>®</sup>  
DESIGN + BUILD

832.380.4289 | www.scaledesignbuild.com

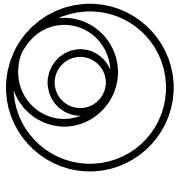
# 4022 Merrick Street



**RIGHT ELEVATION**  
SCALE: 1/4" = 1'-0"



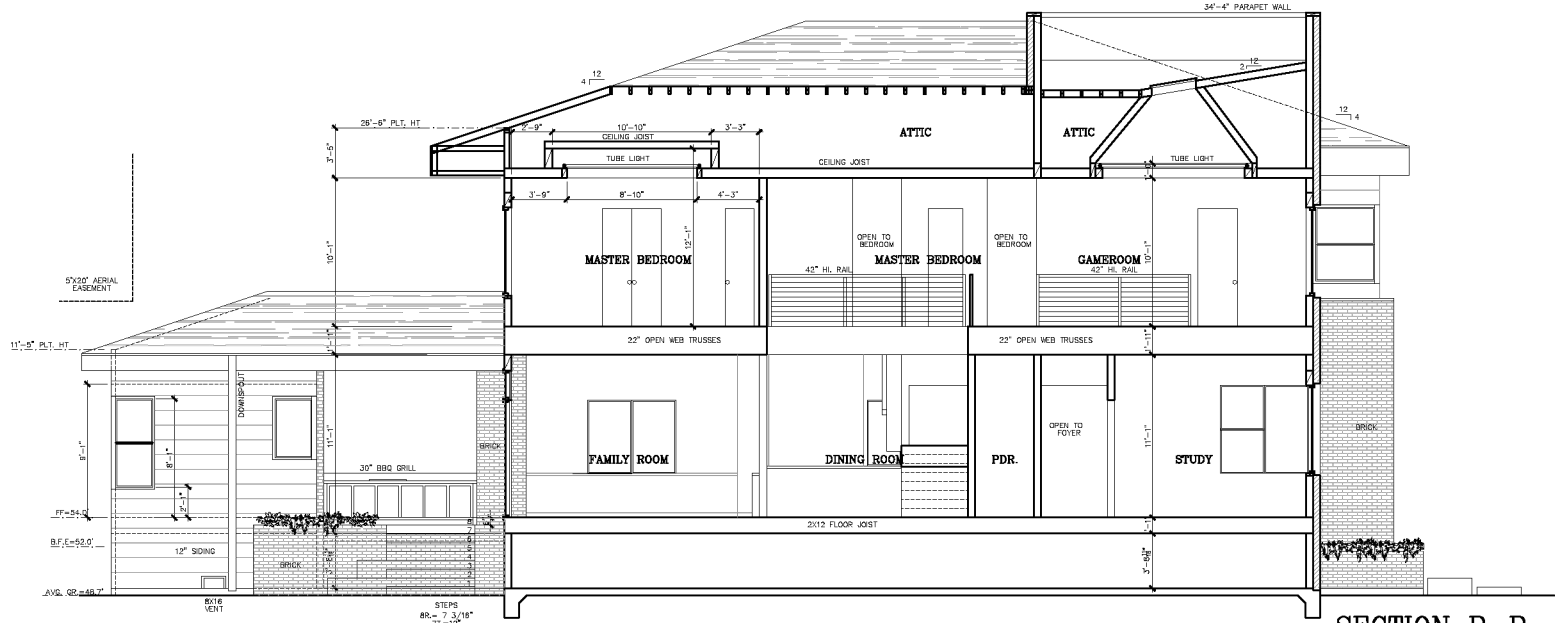
**REAR ELEVATION**  
SCALE: 1/4" = 1'-0"



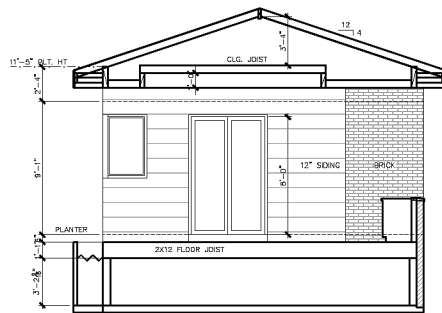
**SCALE**<sup>®</sup>  
DESIGN + BUILD

832.380.4289 | www.scaledesignbuild.com

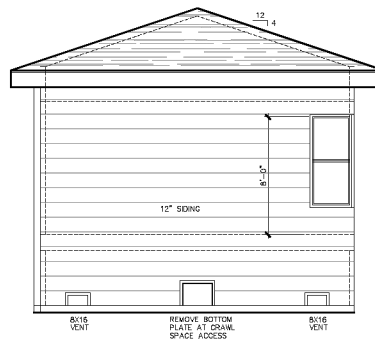
# 4022 Merrick Street



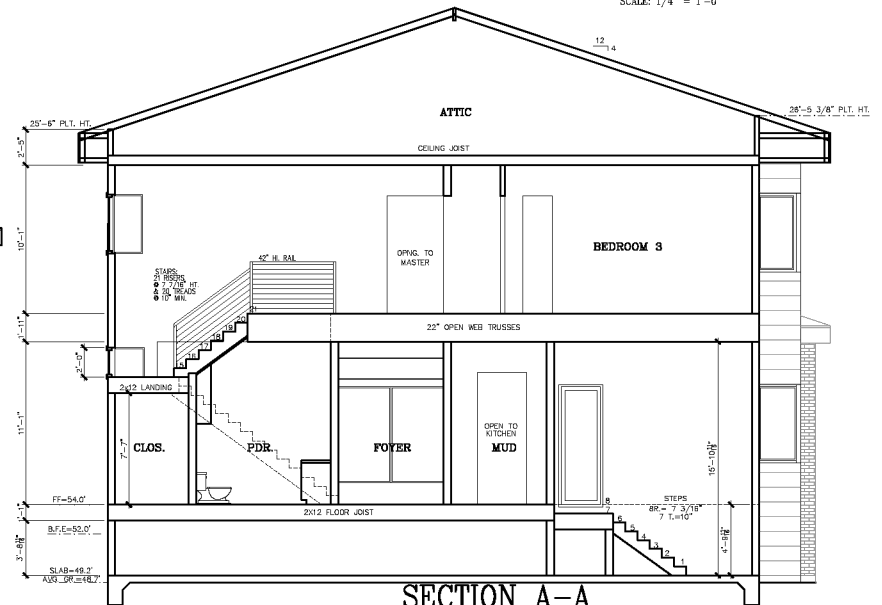
**SECTION B-B**  
SCALE: 1/4" = 1'-0"



**FRONT POOL HOUSE**  
SCALE: 1/4" = 1'-0"



**REAR POOL HOUSE**  
SCALE: 1/4" = 1'-0"



**SECTION A-A**  
SCALE: 1/4" = 1'-0"