



**HILLMAN HUGHES**  
EAST END HOMES



# HOME INFORMATION AND AMENITIES

**W**ELCOME to The Hillman Hughes Subdivision from Graywood Homes. These homes are a very proven lifestyle patio home plans. Available both in first or second floor living set ups. The Lorne Park Plan is very unique for a patio home community with downstairs living, front porch and yard space! The Erindale Plan & The Mavis Plans are a European style second-floor flat living plan with two bedrooms downstairs divided by a full bath. The primary bedroom has soaring ceilings with an incredible spa bathroom and huge closet. With so much natural light in the living room and kitchen. Stainless steel appliances, ECO-Wide features, solid wood cabinets, snow white quartz counter and wood floors.

Some plans include porches, balconies, computer nooks or yards. Hillman Hughes is a brand-new community with ease of access to major shopping, schools and parks. Have you heard about all the new developments in the East End; hike and bike trails directly in front of the subdivision, Tier 1 University and so much more... **CALL TODAY!**



2 Story Living



3 Bedrooms



2.5 Bathrooms

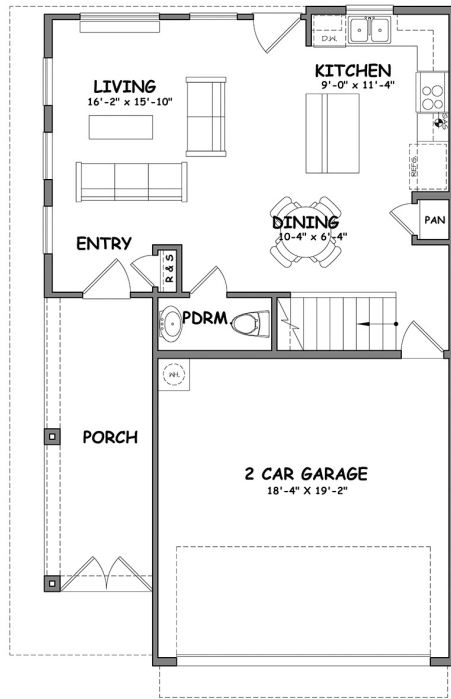


2 Garage

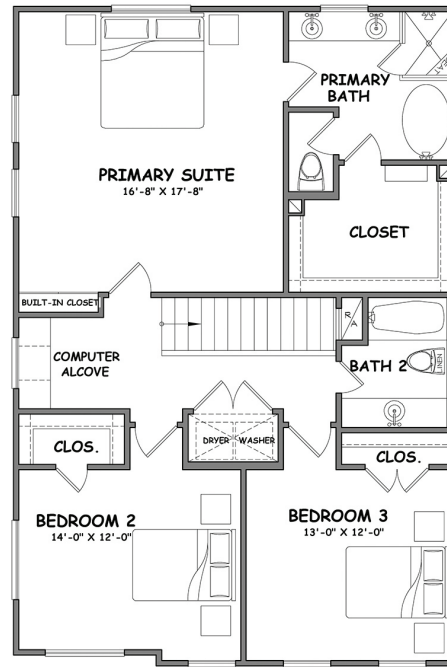


# FLOOR PLANS

## PLAN A – THE LORNE PARK – 1745 SQ FT

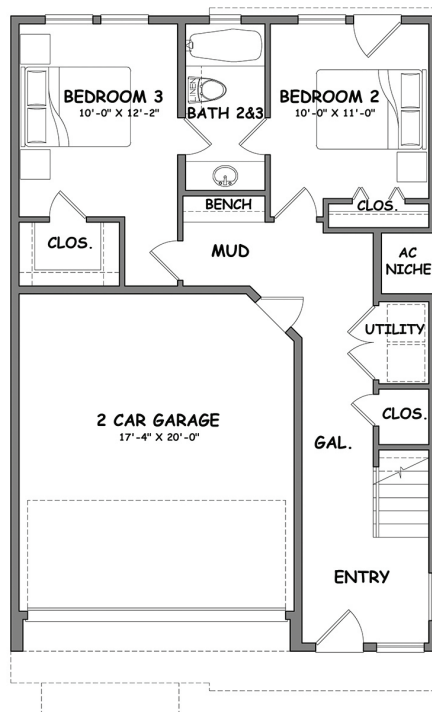


FIRST FLOOR PLAN

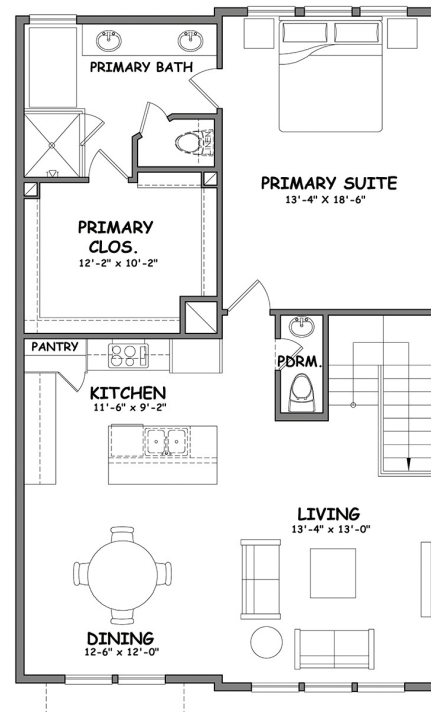


SECOND FLOOR PLAN

## PLAN B – THE ERINDALE – 1857 SQ FT

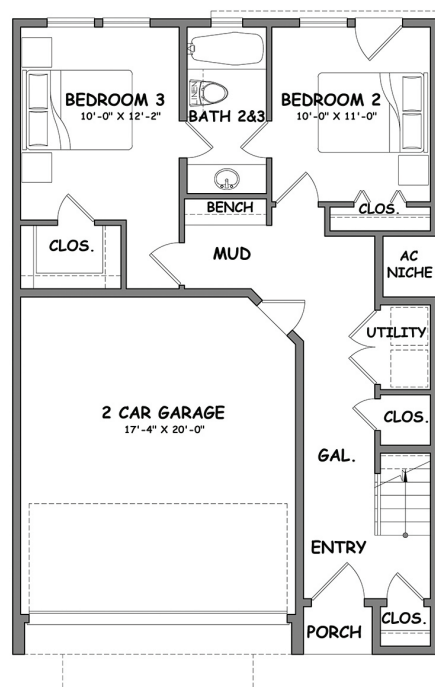


FIRST FLOOR PLAN

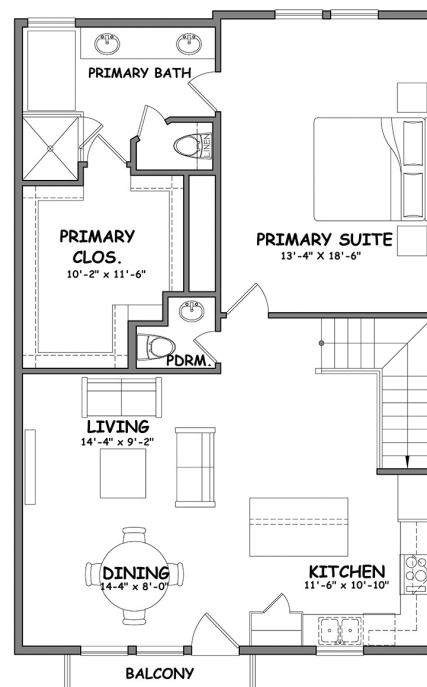


SECOND FLOOR PLAN

## PLAN C – THE MAVIS – 1778 SQ FT



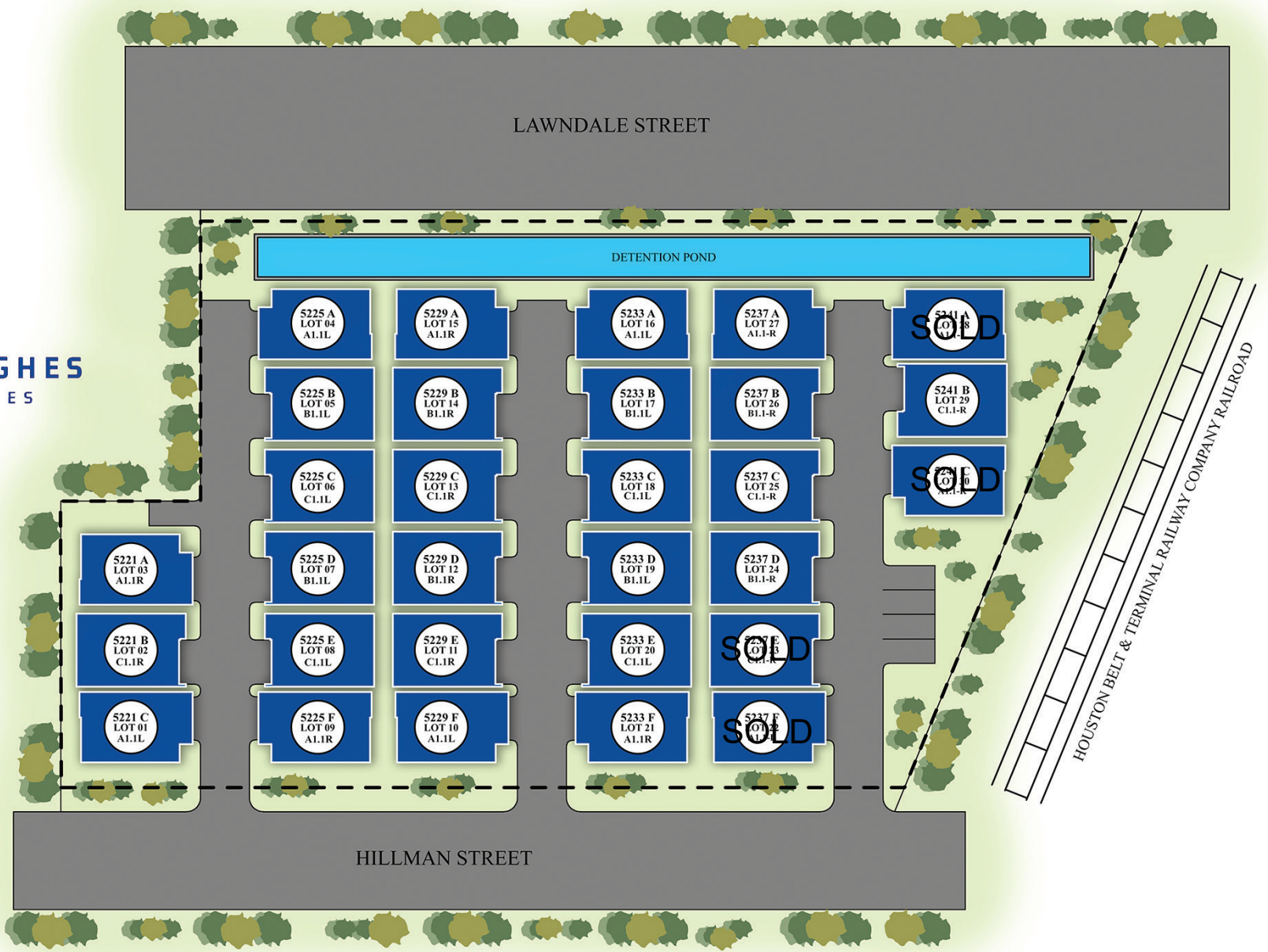
FIRST FLOOR PLAN



SECOND FLOOR PLAN



# SITE PLAN & MAP



SUBJECT TO CHANGE



Downtown Houston - 2.4 Miles



University of Houston Central - .89 Miles



The Texas Medical Center - 3.3 Miles



Gus Wortham Golf Course - 1.8 Miles



Starbucks - 1.5 Miles



Kroger - 1.3 Miles



H-E-B - 3.0 Miles



Gulf Gate Mall - 2.6 Miles





 **TROTWOOD REALTY**

📧 info@txland.net 📞 713-222-7400