

# Lawrence Builders Home Warranty



## Workmanship Warranty ✓

Quality is important, especially in your new home. Your workmanship warranty provides coverage from the day of closing and establishes the standards applicable to the fit, finish and materials used in the construction of your home.

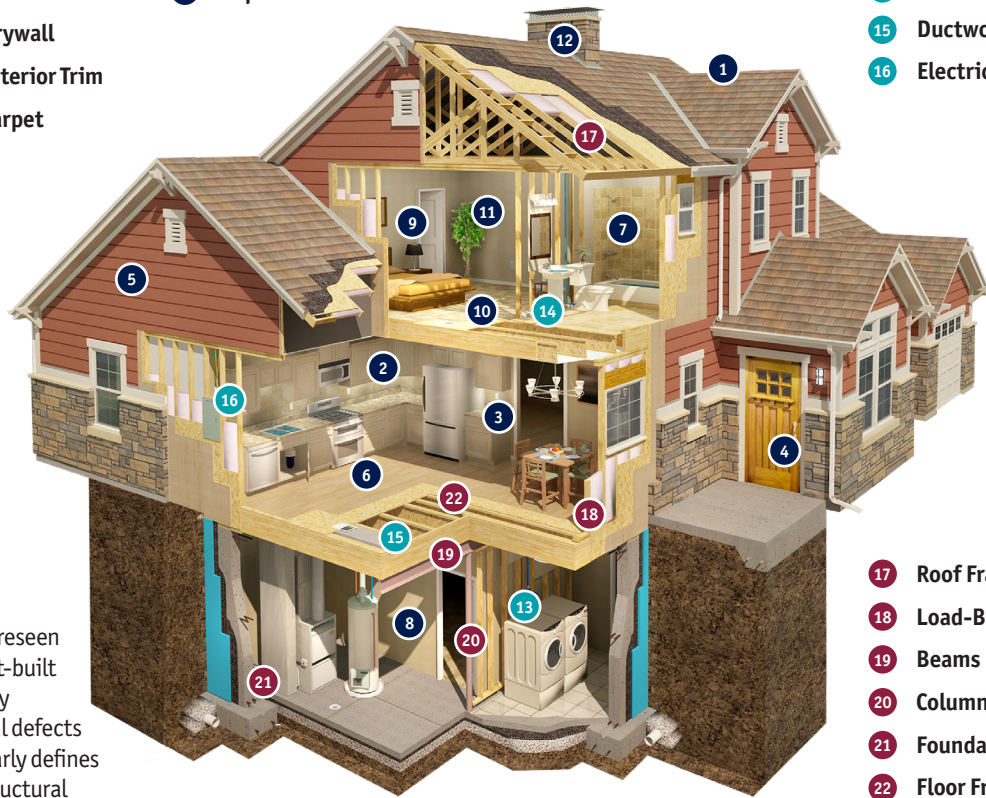
- 1 Roof Covering
- 2 Cabinets
- 3 Countertops
- 4 Door Panels
- 5 Exterior Siding
- 6 Hardwood Floor
- 7 Ceramic Tile
- 8 Drywall
- 9 Interior Trim
- 10 Carpet
- 11 Paint
- 12 Fireplace



## Distribution Systems Warranty ✓

While you rarely see them, essential functions such as electrical, plumbing and mechanical systems are working behind the walls of your new home. Your distribution systems warranty begins at closing and establishes the standards for your home's wiring, piping and ductwork.

- 13 Supply Piping
- 14 Waste Piping
- 15 Ductwork
- 16 Electrical Wiring



- 17 Roof Framing
- 18 Load-Bearing Walls
- 19 Beams
- 20 Columns
- 21 Foundation
- 22 Floor Framing



## Structural Warranty ✓

While your home was carefully constructed, occasionally unforeseen problems arise, even in the best-built homes. Your structural warranty provides coverage for structural defects from the day of closing and clearly defines the standards related to the structural integrity of the load-bearing elements of the home.

Homeowner's Request at [www.lawrencebuilder.com](http://www.lawrencebuilder.com)