



Notable Features + Amenities

5 Bedrooms | 4 Full and 1 Half Baths | 4-Car Attached Garage
5,581 Sq. Ft. (Per Appraisal) | 40,000 Lot Sq. Ft. (Per HCAD) | Built in 1970 (Per HCAD)

Recent Renovations by Current Owner

- Renovations began in 2018 and concluded in 2020
- New IPE exterior decks
- New 50-year TPO roof
- Upgraded electrical systems
- New Insulation
- Complete kitchen remodel; new custom cabinets, lighting, appliances, and counters
- Care was taken to retain/restore the Mid-Century Modern details
- All windows re-glazed and resealed

Formal Living Room / Entry – 20' x 20'

- 8' Ceiling
- Solid wood double door main entry doors flanked by full-lite floor-to-ceiling windows
- Sunken seating area in center of room with vaulted skylight
- Coat closet with hanging rod and wood paneled door
- Madagascar Dalbergia Rosewood (now extinct) paneled walls
- Recessed lighting
- Terrazzo floors

Powder Bath – 6' x 5'

- 8' Ceiling
- Custom Agape brand wall-mounted mirror with LED backlighting
- Floor-to-ceiling mosaic tile wall paneling
- Agape brand porcelain pedestal sink with touch-free faucet
- Kohler commode with "smart seat"
- Pendant light fixture
- Terrazzo floors

Dining Room – 22' x 14'

- 9' 6" Ceiling
- Floor-to-ceiling sliding glass double door to rear patio; flanked by floor-to-ceiling sidelights
- Built-in buffet cabinetry with granite countertop, cabinet storage, overhead display cabinetry, and Madagascar Dalbergia Rosewood cabinet veneer
- Madagascar Dalbergia Rosewood (now extinct) paneled wall
- Floor-to-ceiling brick accent wall
- Mid-Century chandelier
- Recessed lighting
- Terrazzo floors

Family Room – 28' x 20'

- 8' Ceiling
- Floor-to-ceiling sliding glass double door to rear patio; flanked by floor-to-ceiling sidelights
- Built-in cabinetry with mosaic tile backing
- Closet: Stacked Samsung washer and dryer and two overhead shelves
- Recessed lighting
- 5" Baseboards
- Terrazzo floors

Kitchen – 27' x 15'

- 8' Ceiling
- Floor-to-ceiling sliding glass double door to exterior patio; flanked by floor-to-ceiling sidelights
- Italian Statuario marble slab countertops with marble slab full backsplash
- Island with breakfast bar, Italia Statuario marble slab countertop with waterfall edge, and custom cabinetry
- Marble sink with gooseneck faucet
- Bosch induction cooktop with five burners (on island)
- Stainless steel Bosch oven set inside custom cabinet
- Stainless steel Bosch microwave set inside custom cabinet
- Gaggenau refrigerator and freezer with cabinet facade
- Custom display cabinets with tinted glass door and LED backlighting
- Bosch refrigerator and freezer combo with cabinet facade

- All custom cabinetry with soft close drawers and cabinet doors, finished walnut and stainless-steel interiors, and electronic Blu Motion enhancements
- Floor-to-ceiling brick accent wall
- Recessed lighting
- Terrazzo floors

Utility Room – 18' x 5'

- 8' Ceiling
- Three skylights
- Space for full-size washer and dryer with electric connections
- Plumbing connections to install utility sink
- Storage closet with built-in shelving
- Storage closet with hanging rod and overhead shelving
- Overhead cabinet storage
- Garage access
- Recessed lighting
- 6" Baseboards
- Laminate tile floors

Upstairs Full Bath – 8' x 8'

- 8' Shiplap ceiling
- Floor-to-ceiling brick walls
- Located above the Den with floor-to-ceiling windowed walls
- Adjacent sitting area (10' x 6') with "viewing platform" (15' x 5') overlooking the lush natural surroundings of the home
- Porcelain pedestal sink
- Kohler commode
- Shower with brick surround and waterfall shower head
- 3-Bulb vanity sconce
- Storage nook with hanging rod
- Recessed lighting
- Concrete floors

Den – 23' x 13'

- 24' Shiplap ceiling; Sunken room with spiral staircase to upper levels
- Two floor-to-ceiling windowed walls with views of the rear grounds/bayou
- Gas fireplace set in brick surround
- Two brick walls
- Spiral staircase to main level
- Studio track lighting
- Terrazzo floors

Primary Bedroom – 16' x 15'

- 9' Ceiling
- Four full-lite floor-to-ceiling windows
- Atrium with floor-to-ceiling windows and one sliding glass door
- Exposed brick accent wall
- Ceiling fan
- Recessed lighting
- Entry: Terrazzo floors
- Rest of room: Bolle natural wood floors with a hand polished Scandinavian white oil finish

Primary Closet / Dressing Room – 20' x 15'

- 9' Ceiling
- One skylight
- Flos vintage Mid-Century Modern chandelier from the 60's
- Wet bar/coffee bar with marble countertop, built-in sink, adjacent refrigerator drawer with cabinet façade, and custom cabinetry
- Custom Teak cabinetry
- One wrap-around overhead shelf
- Six overhead shelves
- Fifteen hanging rods
- Packing island with wooden countertop and built-in cabinetry
- Recessed lighting
- Bolle natural wood floors with a hand polished Scandinavian white oil finish

Primary Bathroom – 16' x 15'

- 9' Ceiling
- Four full-lite floor-to-ceiling windows
- Floating vanity with wooden countertop, dual rectangular vessel sinks with polished nickel hardware, and custom Teak cabinetry
- Agape brand freestanding bathtub set in Teak surround
- Shower with glass enclosure, Italian Statuario marble and wood surround, rainfall shower head, polished nickel hardware, and marble floor
- Private lavatory closet
- Bocci Mid-Century Chandelier with three artistic glass blown pendants
- Three Viabizzuno vanity sconces with glass shades
- Italian Statuario marble slab accent wall
- Recessed lighting
- Cushion-cut Italian Salvatori marble tile floors laid in Herringbone pattern

Bedroom 1 – 16' x 12'

- 8' Ceiling
- Three full-lite floor-to-ceiling windows
- Built in workstation with custom cabinetry and five floating shelves
- Recessed lighting
- Terrazzo floors

Bedroom 2 – 16' x 12'

- 8' Ceiling
- Three full-lite floor-to-ceiling windows
- Built-in custom Eucalyptus cabinetry
- Closet: Sliding door entry with two hanging rods and one overhead shelf
- Recessed lighting
- 6" Baseboards
- Terrazzo floors

Bedroom 3 / Flex room – 16' x 12'

- 8' Ceiling
- Three full-lite floor-to-ceiling windows
- Built-in custom walnut cabinetry
- Exposed brick accent wall
- Recessed lighting
- 5" Baseboards
- Bolle natural wood floors with a hand polished Scandinavian white oil finish

Shared Bathroom – 15' x 11'

- 8' Ceiling
- Two skylights
- Vanity: Granite countertop and backsplash, two rectangular vessel sinks, and custom walnut cabinetry
- Wall mounted mirror with built-in LED lighting
- One vanity sconce
- Private water closet: shower with sliding glass door, ceramic tile surround, and polished nickel hardware
- Private lavatory with Toto commode
- 5" Baseboards
- Terrazzo floors

Bedroom 4 – 15' x 12'

- 8' Ceiling
- One full-lite window
- Walk in closet with hanging rods and built in shelving
- Recessed lighting
- Exposed brick walls
- Terrazzo floors

Bedroom 4 Bathroom – 12' x 5'

- 8' Ceiling
- One skylight
- Vanity: Reclaimed floating walnut countertop
- 2-Bulb vintage light fixture
- Toto commode
- Shower/tub combo with glass entry, mosaic tile surround, and polished nickel hardware
- Terrazzo floors

Site Plan



SITE PLAN





Floor Plan Main Residence

**Total Finished
Square Footage: 5,557 SQ FT**

Above-Grade: 4,942 SQ FT Below-Grade: 615 SQ FT

Plus 898 SQ FT 4-Car Garage on Main Level

Plus 81 SQ FT Storage on Main Level

Plus 49 SQ FT Workshop on Main level

Calculated per ANSI Standard Z765-2003.

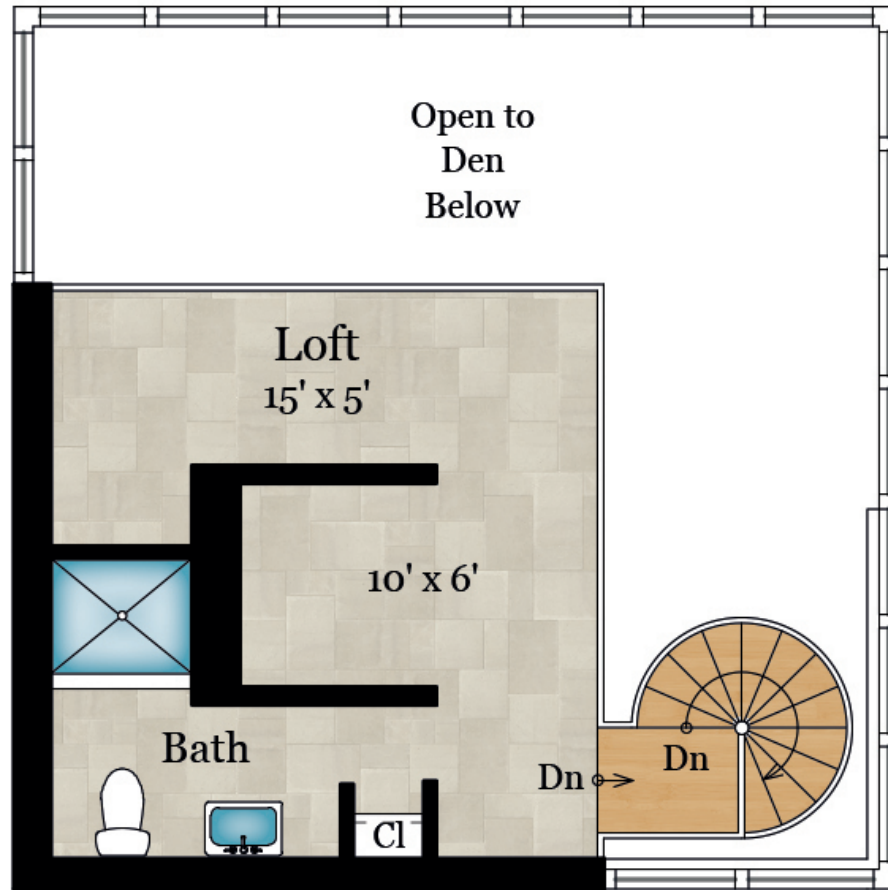
* Total Finished & Unfinished Square Footage: 6,585 SQ FT





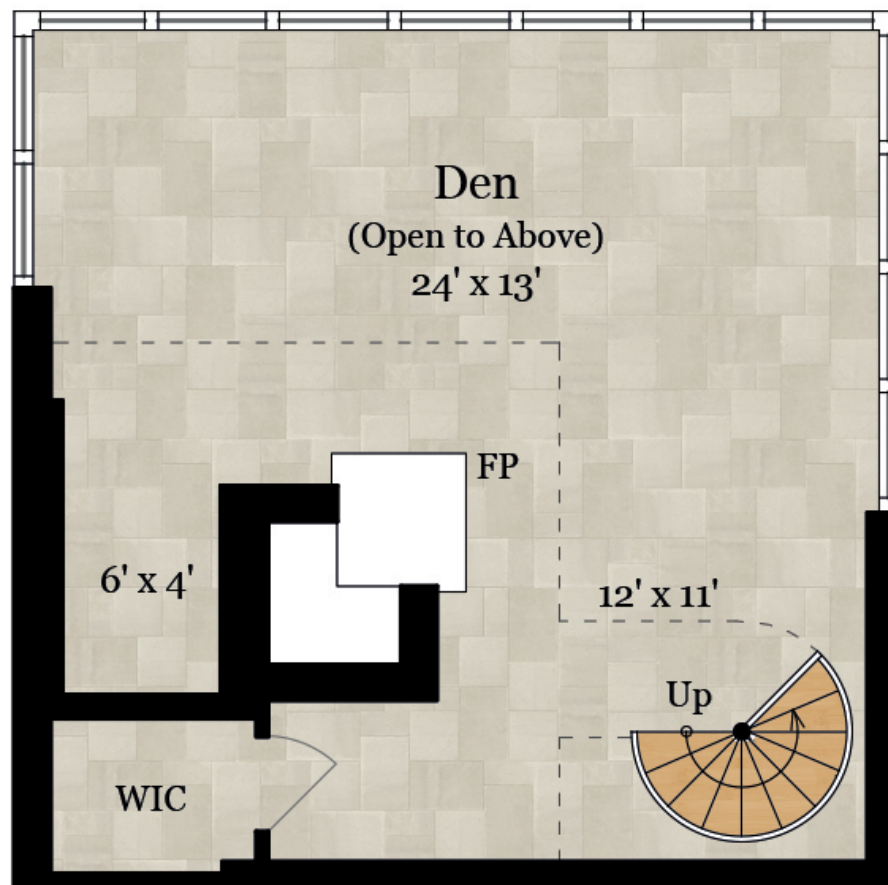
Floor Plan

Upper Level / Lower Level



UPPER LEVEL

316 SQ FT



LOWER LEVEL

615 SQ FT

