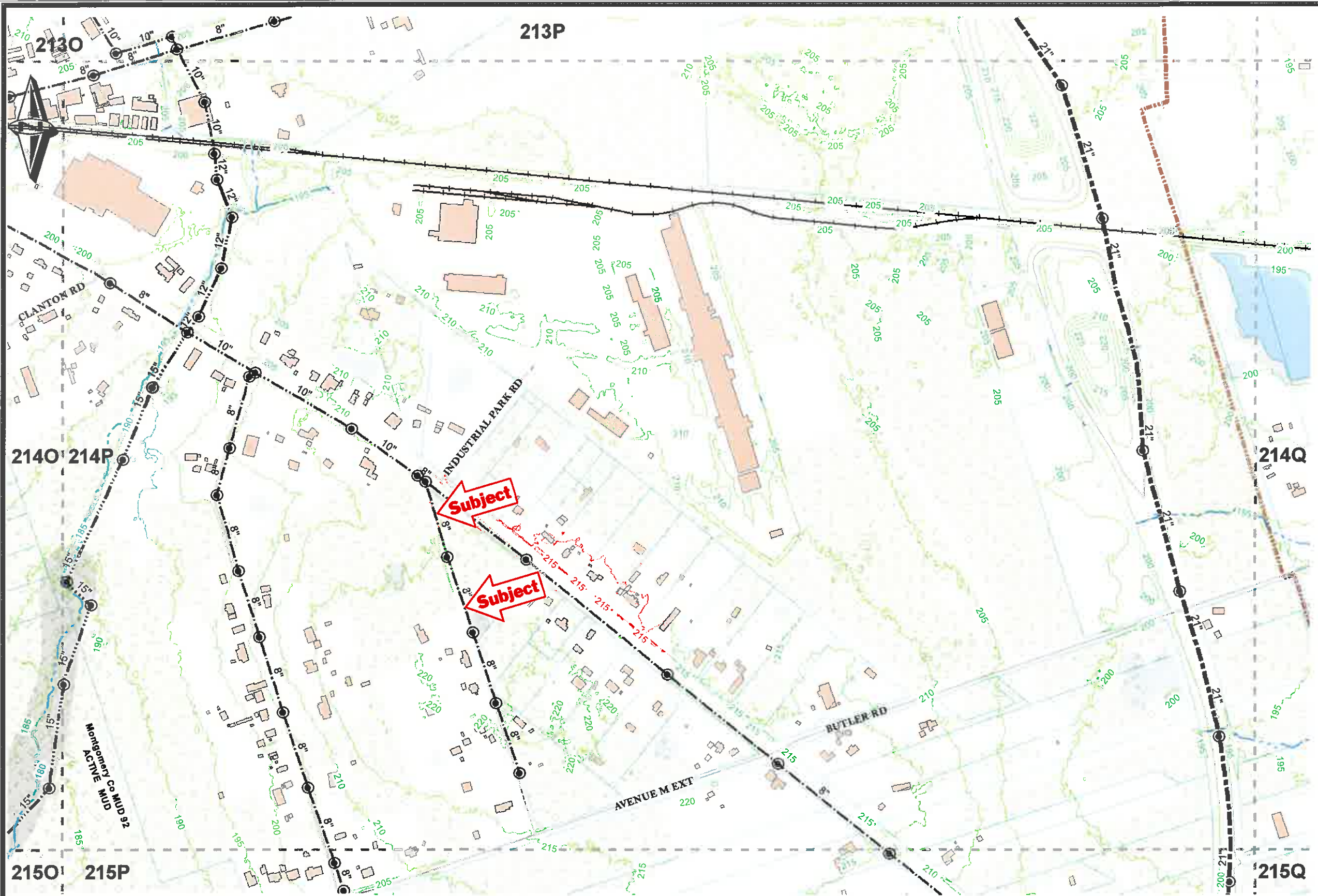


The City of Conroe provides this information with the understanding that it is not guaranteed to be accurate, correct or complete. This product is for informational purposes and may not have been prepared for or be suitable for legal, engineering, or surveying purposes. It does not represent an on-the-ground survey and represents only the approximate relative location of property boundaries. Conclusions drawn from this information are the responsibility of the user. Every effort has been made to ensure the accuracy, correctness and timeliness of the materials presented. The City of Conroe assumes no liability for damages incurred directly or indirectly as a result of incomplete, incorrect or omitted information, even if the City is advised of the possibility that the information may not be accurate. The user of this information assumes all liability for their dependence on this information and assumes all responsibility for its use.



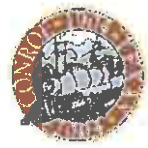
- Legend**
- Conroe City Limits
  - Conroe Planning Area
  - Conroe ETJ
  - Water
  - Map Book Grid
- Sewer Line Size**
- Force Main
  - 6"
  - 8"
  - 10"
  - 12"
  - 15"
  - 16"
  - 18"
  - 21"
  - 24"
  - 30"
  - 36"
  - 42"
  - 48"
  - 51"
  - 54"
  - 60"
- Manholes
  - Lift Stations

The City of Conroe provides this information with the understanding that it is not guaranteed to be accurate, correct or complete. Conclusions drawn from this information are the responsibility of the user. Every effort has been made to ensure the accuracy, correctness and timeliness of the materials presented. The City of Conroe assumes no liability for damages incurred directly or indirectly as a result of incomplete, incorrect or omitted information, even if the City is advised of the possibility that the information may not be accurate. The user of this information assumes all liability for their dependence on this information.

**Notes:**  
 5-Foot contours from City of Conroe/HGAC LIDAR Survey dated 2008.  
 Wetlands by U.S. Fish and Wildlife Service National Wetlands Inventory.  
 Flood data by Federal Emergency Management Agency (FEMA).



- Basemap**
- FEMA Floodway
  - 100-Year Flood
  - 500-Year Flood
  - Freshwater Emergent Wetland
  - Freshwater Forested/Shrub Wetland
  - Other Wetland
  - Freshwater Pond
  - Lake
  - Riverine



**City of Conroe, Texas**  
 P. O. Box 3066 Conroe, Texas 77305  
 Phone: (936) 522-3100 Fax: (936) 522-3125  
 www.cityofconroe.org  
 Our Mission:  
 "To protect and serve the citizens of Conroe and exceed their expectations"

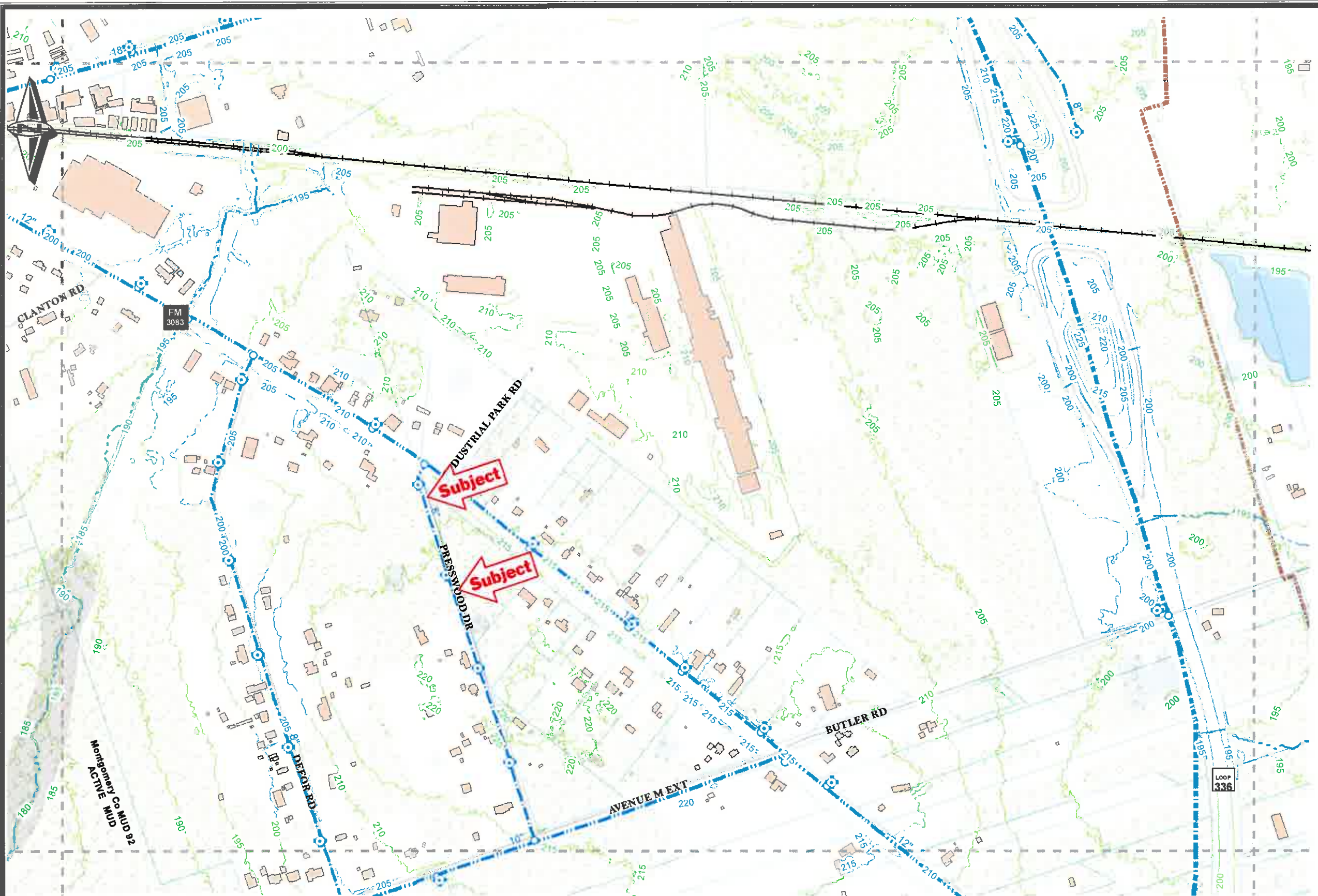
# 214P

## SEWER BOOK

Edition: 2012.12



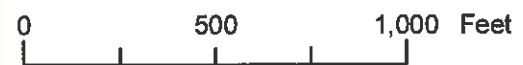
The City of Conroe provides this information with the understanding that it is not guaranteed to be accurate, correct or complete. This product is for informational purposes and may not be suitable for legal, engineering, or surveying purposes. It does not represent an on-the-ground survey and represents only the approximate relative location of property boundaries. Conclusions drawn from this information are the responsibility of the user. Every effort has been made to ensure the accuracy, correctness and timeliness of the materials presented. The City of Conroe assumes no liability for damages incurred directly or indirectly as a result of incomplete, incorrect or omitted information, even if the City is advised of the possibility that the information may not be accurate. The user of this information assumes all liability for their dependence on this information and assumes all responsibility for its use.



- ### Legend
- Conroe City Limits
  - Conroe Planning Area
  - Conroe ETJ
  - Water
  - Map Book Grid
  - Hydrants
  - Blow Off Valve
  - Elevated Storage
  - Gate Valve
  - Hydrant Valve
  - Ground Storage
  - Master Meter
  - Riser Valve
  - Water Treatment Plant
  - Water Well
- 1
  - 2"
  - 4"
  - 6"
  - 8"
  - 10"
  - 12"
  - 16"
  - 18"
  - 20"
  - 24"

The City of Conroe provides this information with the understanding that it is not guaranteed to be accurate, correct or complete. Conclusions drawn from this information are the responsibility of the user. Every effort has been made to ensure the accuracy, correctness and timeliness of the materials presented. The City of Conroe assumes no liability for damages incurred directly or indirectly as a result of incomplete, incorrect or omitted information, even if the City is advised of the possibility that the information may not be accurate. The user of this information assumes all liability for their dependence on this information.

**Notes:**  
 5-Foot contours from City of Conroe/HGAC LIDAR Survey dated 2008.  
 Wetlands by U.S. Fish and Wildlife Service National Wetlands Inventory.  
 Flood data by Federal Emergency Management Agency (FEMA).



- Basemap**
- FEMA Floodway
  - Freshwater Emergent Wetland
  - Freshwater Pond
  - 100-Year Flood
  - Freshwater Forested/Shrub Wetland
  - Lake
  - 500-Year Flood
  - Other Wetland
  - Riverine



**City of Conroe, Texas**  
 P. O. Box 3096 Conroe, Texas 77305  
 Phone: (936) 522-3100 Fax: (936) 522-3125  
 www.cityofconroe.org  
**Our Mission:**  
 "To protect and serve the citizens of Conroe and exceed their expectations."

# 214P

## WATER BOOK

Edition: 2012.12