

# Texas Reserve Included Feature

## LUXURY KITCHEN FEATURES:

- Cutting Edge Stainless Steel Built-In Appliance Package:
  - Fully Integrated Dishwasher
  - 30" Self-Cleaning Double Oven
  - 30" Gas Cooktop with Sealed Burners
  - Microwave with Soft Touch Panel
  - Side by Side Refrigerator with Ice Maker and Water Dispenser
- Durable and Attractive Ceramic Tile in Kitchen and Breakfast Area
- 42" Raised Panel Stained Cabinets with Crown Moulding and Under Cabinet Lighting
- Granite Countertops with a Choice of Edge
- Natural Stone Backsplash, available in various patterns
- Deep Dual Basin Stainless Steel Undermount Sink
- Satin Nickel Faucet with Pull Out Spray Nozzle
- Insulated Garbage Disposal
- Recessed Lighting in Kitchen and Breakfast Areas, per plan
- Pendant Lighting Over Kitchen Island, per plan
- Under Cabinet Lighting
- Electric and Gas Connections at Cooktop
- Spacious Pantry, per plan

## ELEGANT MASTER BATH:

- Durable and Attractive Ceramic Tile on Bath Floor
- Luxurious Garden Tub with Therapeutic Jets
- Recessed Shower with Mesh Tile Flooring and Semi-Frameless Glass Shower Enclosure
- Opaque Rain Glass Window at Tub, per plan
- Climate Controlled Master Closet with Fluorescent Lighting
- Dual Stained Vanity Cabinets
- Matching Stained Medicine Cabinets
- Stylish Dual Cultured Marble Vanity Tops, per plan
- Full Width Vanity Mirror
- Brushed Nickel Washerless Faucets
- Brushed Nickel Plumbing Accessories
- Water Conserving Elongated Commode

## IDEAL SECONDARY BATHS:

- Durable and Attractive Ceramic Tile on Bath Floors and Shower Surrounds
- Stained Vanity Cabinets
- Coordinating Medicine Cabinets, per plan
- Stylish Cultured Marble Vanity Tops
- Full Width Vanity Mirror
- Brushed Nickel Washerless Facuets
- Brushed Nickel Plumbing Accessories
- Water Conserving Elongated Commode

## POWDER ROOM FEATURES (per plan):

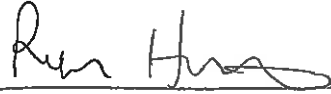
- Durable and Attractive Ceramic Tile Flooring
- Porcelain Pedestal Sink
- Decorative Oval Beveled Mirror
- Brushed Nickel Washerless Faucet
- Brushed Nickel Plumbing Accessories
- Water Conserving Elongated Commode

## UTILITY ROOM FEATURES:

- Durable and Attractive Ceramic Tile Flooring
- Shelving and Cabinets for Convenient Storage
- Top Load Washer and Electric Dryer
- Freezer Space with water line, per plan

## INTERIOR DESIGN CONSULTATION:

- All customers buying at pre-construction receive a complimentary (2) hour design consultation with a professional designer.

X 

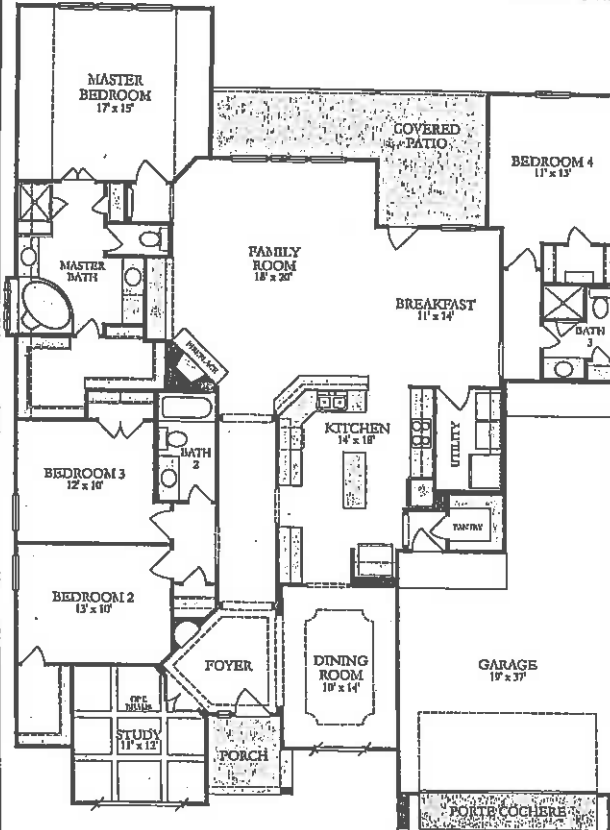
# LENNAR.COM

The specific features in a home may vary from home to home and from one community to another. We reserve the right to substitute equipment, material, appliances and brand names with items of equal or higher, in our sole opinion, value. Color and size variations may occur. The prices of our homes, included features, and available locations are subject to change without notice. Please see actual home purchase agreement for additional information, disclosures and disclaimers relating to the home and its features. 06/03/15

Plan 5531

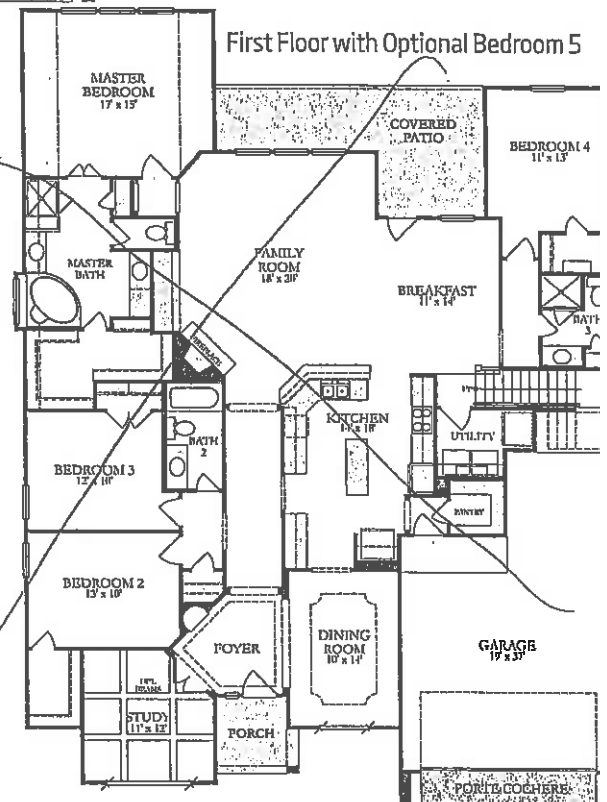
- 4 Bedrooms
- 3 Bathrooms
- 3 Car Garage
- 2,753 Sq. Ft.

Coral

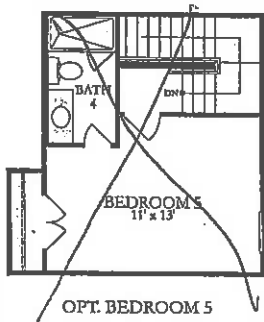


First Floor

First Floor with Optional Bedroom 5



Options



*X*

*Ru*



EVERYTHING'S INCLUDED

# Texas Reserve Included Features

## ATTRACTIVE INTERIORS

Durable and Attractive Ceramic Tile in Foyer  
Brushed Nickel Door Hardware  
Shed Resistant, Continuous Filament Carpet with Stainguard  
1/2 -Inch, 6-Pound Nominal Carpet Pad  
5 3/4" Base Boards Throughout the First Floor Living Area  
5-Blade Ceiling Fan with Light Kit in Master Bedroom,  
Secondary Bedrooms, Family Room, Study and  
Game Room, per plan  
Direct Vent Fireplace with Gas Logs and Remote Control  
Cast Stone Fireplace Surround  
Divided Lite Windows to Complement Front Elevations  
2" Faux Wood Blinds on All Operable Windows  
Rounded Drywall Corners Throughout Home (excludes  
window returns)  
Monterrey Drag Textured Walls and Ceiling  
8' Raised Panel Interior Doors on First Floor, per plan  
Divided Lite French Doors at Study, per plan  
Metal Stair Balusters, per plan  
Designer Light Fixtures Throughout Home  
Decora Rocker Switches Throughout Home  
Crown Molding in Entry, Extended Foyer, Family Room,  
Breakfast Room, Dining Room, Study & Master Bedroom  
Floor Plug in Family Room for Convenient Lamp Placement

## EXTERIOR DESIGN & CONSTRUCTION FEATURES:

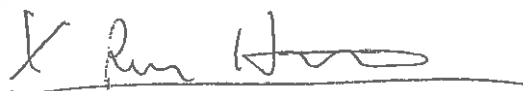
Eye-Catching Exterior Elevation with Architectural Detailing  
Weatherproof Fiber-Cement Siding with 30 Year Warranty  
Landscape package with Backyard Fencing, per community  
guidelines  
Full Sod in Front and Rear Yards  
Fully Automatic Irrigation System  
Front Elevation Gutters  
Stylish 8' Energy Efficient Front Door  
8' Full Lite Back Patio Door with Built-In Mini-Blind  
Brick Front Porch, per community  
30-Year High Quality Dimensional Shingles  
Two-Tone Exterior Paint Package  
Designer Coach Lights  
Hose Bibbs at Front and Rear of Home  
Genuine Fired Clay Brick  
Masonry Address Block  
Covered Concrete Patio, per plan  
Deadbolt Locks on Exterior Doors, where applicable  
Weatherproof Exterior Outlets at Front and Rear of Home  
Design Enhanced Insulated Over-Head Garage Door and Opener and 2 Remotes  
Exterior Ceiling Fan on Rear Porches, per plan  
Bricked 1st Floor Exterior, all 4 Sides

## EXTERIOR DESIGN & CONSTRUCTION FEATURES (cont.):

- 3000 PSI Post-Tension Foundation Certified by an Independent Engineer
- Engineered Subfloor Framing System on Two Story Homes
- 3/4-Inch Tongue and Groove Subflooring Secured with Screws and Adhesive on Two Story Homes

## ENERGY EFFICIENCY & TECHNOLOGY:

- Energy Star 3.0 Builder - Every Home Independently Inspected to Meet Stringent Energy Star Guidelines
- Exterior Air Filtration Damper
- Automated Keyless Entry
- Programmable Thermostat with Humidity Control
- Lennox 16-SEER Air Conditioning System
- Dual-Zone Air Conditioning System, on Two-Story Plans
- Radiant Barrier Roof Decking to Reduce Attic Temperature
- Roof Ventilation and Air Vents, per plan
- (1) 50-Gallon or (2) 40-Gallon High Efficiency Gas Water Heaters, per plan
- R-38 Insulation in Flat Ceilings (where accessible)
- R-22 Insulation on Sloped Ceilings and Attic Walls (where accessible)
- R-13 Insulation and R-3 Sheathing on Exterior
- Poly Seal Insulation Throughout to Minimize Air Infiltration and Ensure Energy Efficiency
- High Performance, Multi-Layer Low E Insulated Windows for Added Energy Efficiency
- Vinyl Window Frames in Tan Color
- Structured Wiring System to Meet or Exceed Development Specifications
- Wiring for Telephone Outlets in All Bedrooms, Study and Game Room, per plan
- Wiring for Cable, Data, and Phone Outlets in All Bedrooms, Family Room, Study, Game Room, and Media Room, per plan
- Surround Sound Pre-Wire in Family Room, per plan
- Multi-port Branch and Tee Plumbing System
- Security System with Motion Detector, Keypad and Sensors at First Floor Windows and Exterior Doors



EVERYTHING'S  
INCLUDED