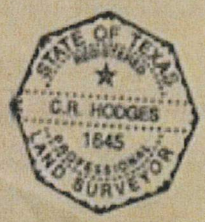
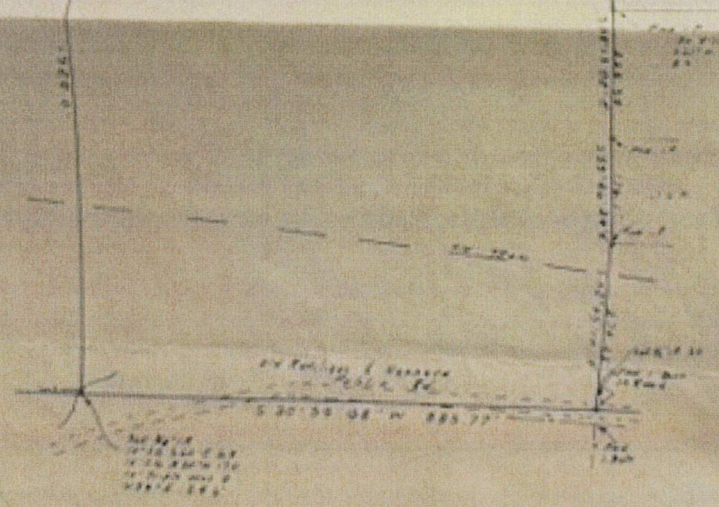


JOHN ROY STEVEY, A-14

1" = 200 Feet
 HOUSTON COUNTY
 April 9, 1991

40.950 Ac.



I, C.R. HODGES, A REGISTERED PROFESSIONAL LAND SURVEYOR IN THE STATE OF TEXAS, DO HEREBY CERTIFY THAT THE PROPERTY COVERED BY THE ABOVE PLAT THEREON IS TRUE AND CORRECT AND WAS SURVEYED ON THE GROUND BY ME OR UNDER MY SUPERVISION. THERE ARE NO ENCROACHMENTS, OVERLAPS, OR VISIBLE EASEMENTS, EXCEPT AS SHOWN.

C.R. Hodges
 REGISTERED PROFESSIONAL SURVEYOR
 NO. 1445, TEXAS

Field Notes for 40.959 Acres
JOHN BOX SURVEY, A-14
Houston County, Texas

40.959 acres out of and a part of JOHN BOX SURVEY, A-14, in the Houston County, Texas and being the same land described in a deed to A.C. Billingsley from E.C. Billingsley recorded in Vol. 469, Page 125 of the Houston County Deed Records, which 40.959 acres more particularly described by acres and bounds as follows:

BEGINNING on a found iron pipe w/c FIA V13 and iron bolt for the North, North West corner of this tract, same being the North, North West corner of said original called 40 acre tract, from which a found 26" Pine brs. N 3° E 11.22 feet, a 22" Pine brs. N 37° W 17.2 feet and a 24" P.O. brs. S 40° W 17.5 feet and being the South corner of a USA tract and the North East corner of Mattie Colbert Hrs. 4.6 acre tract;

THENCE S 57° 56' 13" E 1219.33 feet to a found iron pipe for corner, from which a 30" Elm brs. S 60° W 8.5 feet;

THENCE S 58° 13' 08" E 224.54 feet to iron pipe found for government corner;

THENCE S 59° 46' 24" E 176.1 feet to iron pipe found for government corner;

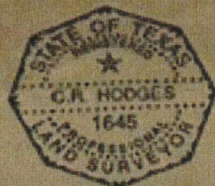
THENCE S 52° 45' 10" E 274.23 feet to iron bolt found for corner in the old Ratcliff and Kennard road, set 1/2 inch iron rod for reference corner N 52° 45' 10" W 20.0 feet;

THENCE S 30° 34' 48" W 875.77 feet to a 5/8 inch iron rod set for corner, same being the North East corner of a 40 acre tract from which a 10" S.C. brs. S 60° E 5.8 feet, a 10" S.C. brs. N 20° W 17.0 feet and a 10" Triple Water Oak brs. N 34° E 24.4 feet;

THENCE N 59° 54' 00" W 1920.0 feet to concrete monument found for corner, same being the North West corner of the said 40.0 acre tract and the North East corner of the J.E. Stead 17.205 acre tract;

THENCE N 32° 32' 36" E 969.42 feet to the place of beginning and containing 40.959 acres of land more or less.

Field Notes Prepared April 12, 1991.



I, C.R. Hodges, a Registered Professional Land Surveyor in the State of Texas, do hereby certify that the property covered by the above field notes therein are true and correct and was surveyed on the ground by me or under my supervision. There are no encroachments, overlaps, or visible easements, except as shown.

C.R. Hodges
Registered Professional Surveyor
No. 1645, Texas