

GRAPHIC SCALE
(1" = 30')
1 inch = 30 ft

LEGEND:

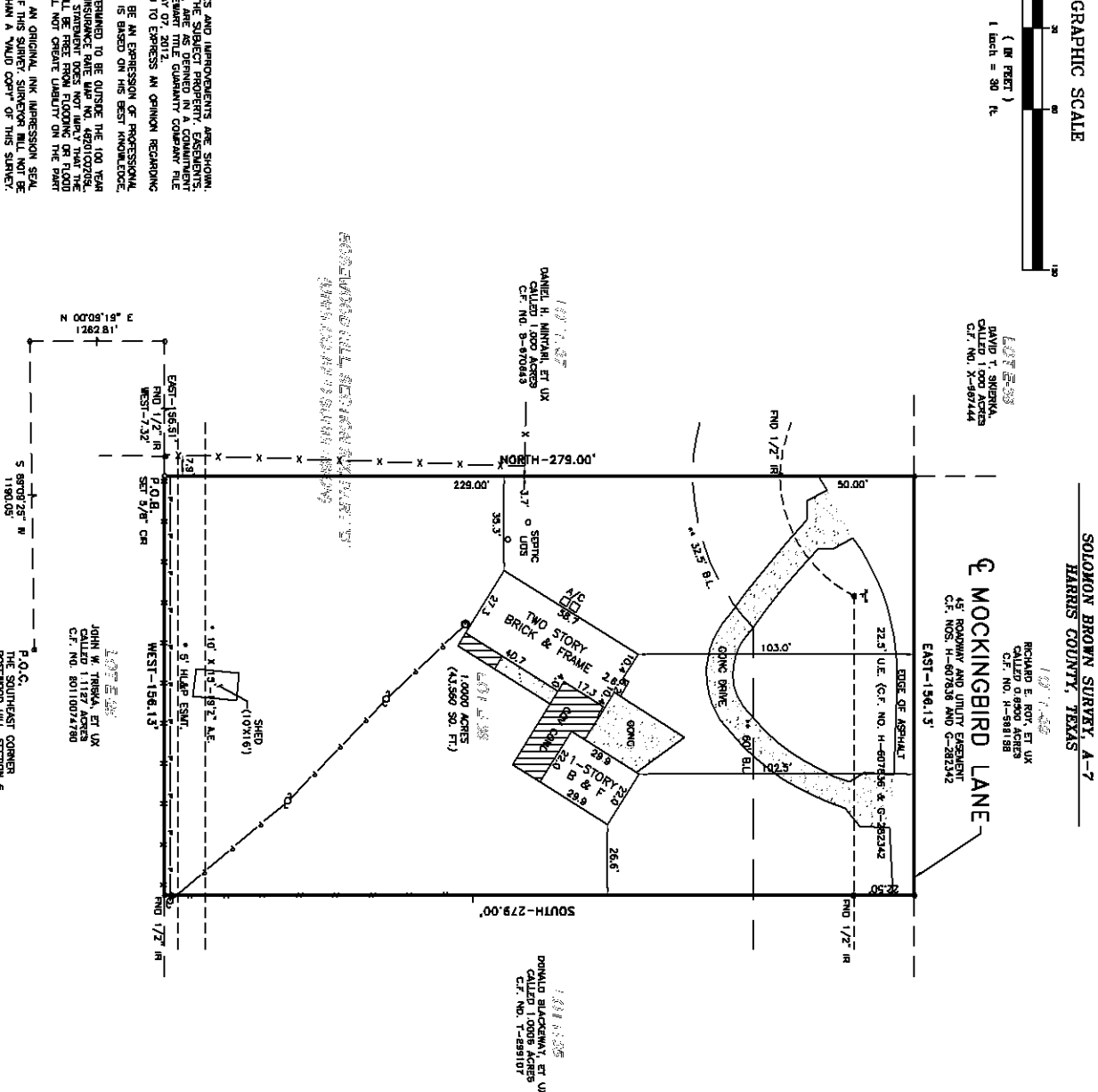
- 1 - ELECTRIC BOX
- 2 - TELEPHONE BOX
- 3 - CABLE TELEVISION BOX
- 4 - WATER METER
- 5 - WATER METER
- 6 - LIGHT POLE
- 7 - SHED
- 8 - STORM SEWER MANHOLE
- 9 - STORM SEWER MANHOLE
- 10 - ELECTRIC MANHOLE
- 11 - SAMPLE WELL
- 12 - WATER WELL
- 13 - DRAINAGE ALIET
- 14 - UTILITY MARKER
- 15 - UTILITY MARKER
- 16 - UTILITY MARKER
- 17 - UTILITY MARKER
- 18 - UTILITY MARKER
- 19 - UTILITY MARKER
- 20 - UTILITY MARKER
- 21 - UTILITY MARKER
- 22 - UTILITY MARKER
- 23 - UTILITY MARKER
- 24 - UTILITY MARKER
- 25 - UTILITY MARKER
- 26 - UTILITY MARKER
- 27 - UTILITY MARKER
- 28 - UTILITY MARKER
- 29 - UTILITY MARKER
- 30 - UTILITY MARKER
- 31 - UTILITY MARKER
- 32 - UTILITY MARKER
- 33 - UTILITY MARKER
- 34 - UTILITY MARKER
- 35 - UTILITY MARKER
- 36 - UTILITY MARKER
- 37 - UTILITY MARKER
- 38 - UTILITY MARKER
- 39 - UTILITY MARKER
- 40 - UTILITY MARKER
- 41 - UTILITY MARKER
- 42 - UTILITY MARKER
- 43 - UTILITY MARKER
- 44 - UTILITY MARKER
- 45 - UTILITY MARKER
- 46 - UTILITY MARKER
- 47 - UTILITY MARKER
- 48 - UTILITY MARKER
- 49 - UTILITY MARKER
- 50 - UTILITY MARKER
- 51 - UTILITY MARKER
- 52 - UTILITY MARKER
- 53 - UTILITY MARKER
- 54 - UTILITY MARKER
- 55 - UTILITY MARKER
- 56 - UTILITY MARKER
- 57 - UTILITY MARKER
- 58 - UTILITY MARKER
- 59 - UTILITY MARKER
- 60 - UTILITY MARKER
- 61 - UTILITY MARKER
- 62 - UTILITY MARKER
- 63 - UTILITY MARKER
- 64 - UTILITY MARKER
- 65 - UTILITY MARKER
- 66 - UTILITY MARKER
- 67 - UTILITY MARKER
- 68 - UTILITY MARKER
- 69 - UTILITY MARKER
- 70 - UTILITY MARKER
- 71 - UTILITY MARKER
- 72 - UTILITY MARKER
- 73 - UTILITY MARKER
- 74 - UTILITY MARKER
- 75 - UTILITY MARKER
- 76 - UTILITY MARKER
- 77 - UTILITY MARKER
- 78 - UTILITY MARKER
- 79 - UTILITY MARKER
- 80 - UTILITY MARKER
- 81 - UTILITY MARKER
- 82 - UTILITY MARKER
- 83 - UTILITY MARKER
- 84 - UTILITY MARKER
- 85 - UTILITY MARKER
- 86 - UTILITY MARKER
- 87 - UTILITY MARKER
- 88 - UTILITY MARKER
- 89 - UTILITY MARKER
- 90 - UTILITY MARKER
- 91 - UTILITY MARKER
- 92 - UTILITY MARKER
- 93 - UTILITY MARKER
- 94 - UTILITY MARKER
- 95 - UTILITY MARKER
- 96 - UTILITY MARKER
- 97 - UTILITY MARKER
- 98 - UTILITY MARKER
- 99 - UTILITY MARKER
- 100 - UTILITY MARKER

SURVEY NOTES:

1. THE ABOVE PROPERTY OF INTEREST AND IMPROVEMENTS ARE SHOWN.
2. THE SURVEY WAS MADE BY THE SURVEYOR IN ACCORDANCE WITH THE
3. BUILDING LINES, RESTRICTIONS, ETC., ARE AS SHOWN IN A COMMUNITY
4. FOR TITLE INSURANCE PURPOSES BY STEWART TITLE GUARANTEE COMPANY FILE
5. NO. 12011444, EXPIRE DATE JAN 17, 2012.
6. DIMENSIONS OR TIME.
7. THE WORD CERTIFY IS UNDERSTOOD TO BE AN EXPRESSION OF PROFESSIONAL
8. JUDGMENT BY THE SURVEYOR WHICH IS BASED ON HIS BEST KNOWLEDGE,
9. INFORMATION AND RECORDS AVAILABLE TO HIM AT THE TIME OF THE SURVEY.
10. PROPERTY LIES IN ZONE "X" AREAS DETERMINED TO BE OUTSIDE THE 100 YEAR
11. FLOODPLAIN ACCORDING TO THE FLOOD INSURANCE RATE MAP NO. 4620102094,
12. EFFECTIVE DATE 6-18-07. THIS FLOOD INSURANCE DOES NOT IMPLY THAT THE
13. PLANNED THIS FLOOD STRATEGY SHALL NOT BE AFFECTED BY THE FLOOD
14. OF THE SURVEYOR.
15. ONLY THOSE SURVEYS WHICH BEAR AN ORIGINAL INK IMPRESSION SEAL
16. WILL BE CONSIDERED A VALID COPY OF THIS SURVEY. SURVEYOR WILL NOT BE
17. RESPONSIBLE FOR ANYTHING OTHER THAN A VALID COPY OF THIS SURVEY.

LEGEND:

- 1 - ELECTRIC BOX
- 2 - TELEPHONE BOX
- 3 - CABLE TELEVISION BOX
- 4 - WATER METER
- 5 - WATER METER
- 6 - LIGHT POLE
- 7 - SHED
- 8 - STORM SEWER MANHOLE
- 9 - STORM SEWER MANHOLE
- 10 - ELECTRIC MANHOLE
- 11 - SAMPLE WELL
- 12 - WATER WELL
- 13 - DRAINAGE ALIET
- 14 - UTILITY MARKER
- 15 - UTILITY MARKER
- 16 - UTILITY MARKER
- 17 - UTILITY MARKER
- 18 - UTILITY MARKER
- 19 - UTILITY MARKER
- 20 - UTILITY MARKER
- 21 - UTILITY MARKER
- 22 - UTILITY MARKER
- 23 - UTILITY MARKER
- 24 - UTILITY MARKER
- 25 - UTILITY MARKER
- 26 - UTILITY MARKER
- 27 - UTILITY MARKER
- 28 - UTILITY MARKER
- 29 - UTILITY MARKER
- 30 - UTILITY MARKER
- 31 - UTILITY MARKER
- 32 - UTILITY MARKER
- 33 - UTILITY MARKER
- 34 - UTILITY MARKER
- 35 - UTILITY MARKER
- 36 - UTILITY MARKER
- 37 - UTILITY MARKER
- 38 - UTILITY MARKER
- 39 - UTILITY MARKER
- 40 - UTILITY MARKER
- 41 - UTILITY MARKER
- 42 - UTILITY MARKER
- 43 - UTILITY MARKER
- 44 - UTILITY MARKER
- 45 - UTILITY MARKER
- 46 - UTILITY MARKER
- 47 - UTILITY MARKER
- 48 - UTILITY MARKER
- 49 - UTILITY MARKER
- 50 - UTILITY MARKER
- 51 - UTILITY MARKER
- 52 - UTILITY MARKER
- 53 - UTILITY MARKER
- 54 - UTILITY MARKER
- 55 - UTILITY MARKER
- 56 - UTILITY MARKER
- 57 - UTILITY MARKER
- 58 - UTILITY MARKER
- 59 - UTILITY MARKER
- 60 - UTILITY MARKER
- 61 - UTILITY MARKER
- 62 - UTILITY MARKER
- 63 - UTILITY MARKER
- 64 - UTILITY MARKER
- 65 - UTILITY MARKER
- 66 - UTILITY MARKER
- 67 - UTILITY MARKER
- 68 - UTILITY MARKER
- 69 - UTILITY MARKER
- 70 - UTILITY MARKER
- 71 - UTILITY MARKER
- 72 - UTILITY MARKER
- 73 - UTILITY MARKER
- 74 - UTILITY MARKER
- 75 - UTILITY MARKER
- 76 - UTILITY MARKER
- 77 - UTILITY MARKER
- 78 - UTILITY MARKER
- 79 - UTILITY MARKER
- 80 - UTILITY MARKER
- 81 - UTILITY MARKER
- 82 - UTILITY MARKER
- 83 - UTILITY MARKER
- 84 - UTILITY MARKER
- 85 - UTILITY MARKER
- 86 - UTILITY MARKER
- 87 - UTILITY MARKER
- 88 - UTILITY MARKER
- 89 - UTILITY MARKER
- 90 - UTILITY MARKER
- 91 - UTILITY MARKER
- 92 - UTILITY MARKER
- 93 - UTILITY MARKER
- 94 - UTILITY MARKER
- 95 - UTILITY MARKER
- 96 - UTILITY MARKER
- 97 - UTILITY MARKER
- 98 - UTILITY MARKER
- 99 - UTILITY MARKER
- 100 - UTILITY MARKER



METES AND BOUNDS DESCRIPTION

ALL THAT CERTAIN 1,000 ACRES (43,560 SQUARE FEET) TRACT OR PARCEL OF LAND KNOWN AS LOT E-38 OF ROSEMOUND HILLS SECTION SIX, PART B-18, AN UNPLATTED SUBDIVISION OF THE SOLOMON BROWN SURVEY, HARRIS COUNTY, TEXAS, AND BEING MORE PARTICULARLY DESCRIBED BY METES AND BOUNDS AS FOLLOWS:

COMMENCING AT THE SOUTHWEST CORNER OF ROSEMOUND HILLS SECTION SIX, SAID POINT BEING THE SOUTHWEST CORNER OF A 172,278 ACRES TRACT IN THE SAID SOLOMON BROWN SURVEY AS SHOWN ON PLAT BY W.B. BARKUD, REGISTERED ENGINEER, DATED DECEMBER 9, 1977

THENCE S 89°02'25" W-1190.05 FEET TO THE SOUTHWEST CORNER OF SAID SECTION SIX;

THENCE N 02°02'10" E-1282.81 FEET ALONG THE WEST LINE OF SAID SECTION SIX TO A POINT;

THENCE EAST-156.51 FEET TO A 5/8 INCH IRON ROD WITH CAP SET FOR THE SOUTHWEST CORNER AND THE POINT OF BEGINNING OF HERBEN DESCRIBED TRACT, FROM WHICH A 1/2 INCH IRON AT FENCE CORNER BEARS WEST-7.32 FEET;

THENCE NORTH AT A DISTANCE OF 228.00 FEET PASSING A 1/2 INCH IRON ROD FOUND FOR REFERENCE AND COMMENCING FOR A TOTAL DISTANCE OF 279.00 FEET TO THE POINT OF BEGINNING OF HERBEN DESCRIBED TRACT, SAID CORNER BEING IN THE CENTER OF A 50.0 FOOT CUL-DE-SAC AT THE WESTERN END OF MOCKINGBIRD LANE, A 43.0 FOOT ROADWAY AND UTILITY EASEMENT AS RECORDED UNDER CLERK'S FILE NOS. H-607838 AND G-282342 OF THE REAL PROPERTY RECORDS OF HARRIS COUNTY, TEXAS;

THENCE EAST-156.13 ALONG THE CENTER LINE OF SAID MOCKINGBIRD LANE TO THE NORTHEAST CORNER OF LOT E-38 AND THE HERBEN DESCRIBED TRACT;

THENCE SOUTH AT A DISTANCE OF 22.50 FEET PASSING A 1/2 INCH IRON ROD FOUND FOR REFERENCE AND COMMENCING FOR A TOTAL DISTANCE OF 279.00 FEET TO A 1/2 INCH IRON ROD FOUND FOR THE SOUTHWEST CORNER OF LOT E-38 AND THE HERBEN DESCRIBED TRACT;

THENCE WEST-156.13 FEET TO THE POINT OF BEGINNING AND COMMENCING 1,000 ACRES (43,560 SQUARE FEET) OF LAND, MORE OR LESS.

SURVEYORS CERTIFICATION

I, ROBERT D. PICKERING, A REGISTERED PROFESSIONAL LAND SURVEYOR IN THE STATE OF TEXAS, DO HEREBY CERTIFY THAT THE ABOVE SURVEY WAS MADE BY ME OR UNDER MY SUPERVISION OF THE PROPERTY DESCRIBED HEREON (AND/OR BY METES AND BOUNDS ON ATTACHED SHEET), IS CORRECT AND TRUE AND THAT I AM A MEMBER IN GOOD STANDING OF THE TEXAS SURVEYORS ASSOCIATION. I HAVE NOT BEEN CONVICTED OF ANY CRIME THAT WOULD DISQUALIFY ME FROM EXERCISING MY PROFESSIONAL RIGHTS AND PRIVILEGES.

Robert D. Pickering
ROBERT D. PICKERING DATE
REGISTERED PROFESSIONAL LAND SURVEYOR
TEXAS REGISTRATION NO. 9879

PICKERING & ASSOCIATES
PROFESSIONAL LAND SURVEYORS
7702 Pin Oak Street
Morganway, Texas 77316
Phone: (936) 447-4703
Mobile: (281) 804-0785
pickering@boudmail.com

Copyright 2012

SHEET 1 OF 1

SCALE: 1"=30'	DATE: 08-03-12
REVISION:	
BOOK: N/A	
DRAWN BY: J.P.	
APPROVED BY: R.D.P.	
PROJECT NO.: 7073-12	

STEWART TITLE COMPANY

PURCHASER: BENJAMIN K. TOMASETTI AND DIANE CANCA TOMASETTI
LENDER: JP MORGAN CHASE BANK
PROPERTY ADDRESS: 18711 WOKINGBIRD LANE
TOMBALL, TEXAS 77377

LAND TITLE SURVEY

ALL THAT CERTAIN 1,000 ACRES (43,560 SQUARE FEET) TRACT OR PARCEL OF LAND SITUATED IN THE SOLOMON BROWN SURVEY, PART B-18, HARRIS COUNTY, TEXAS, (SEE ATTACHED METES AND BOUNDS DESCRIPTION)

PICKERING & ASSOCIATES
PROFESSIONAL LAND SURVEYORS
7702 Pin Oak Street
Morganway, Texas 77316
Phone: (936) 447-4703
Mobile: (281) 804-0785
pickering@boudmail.com

Copyright 2012