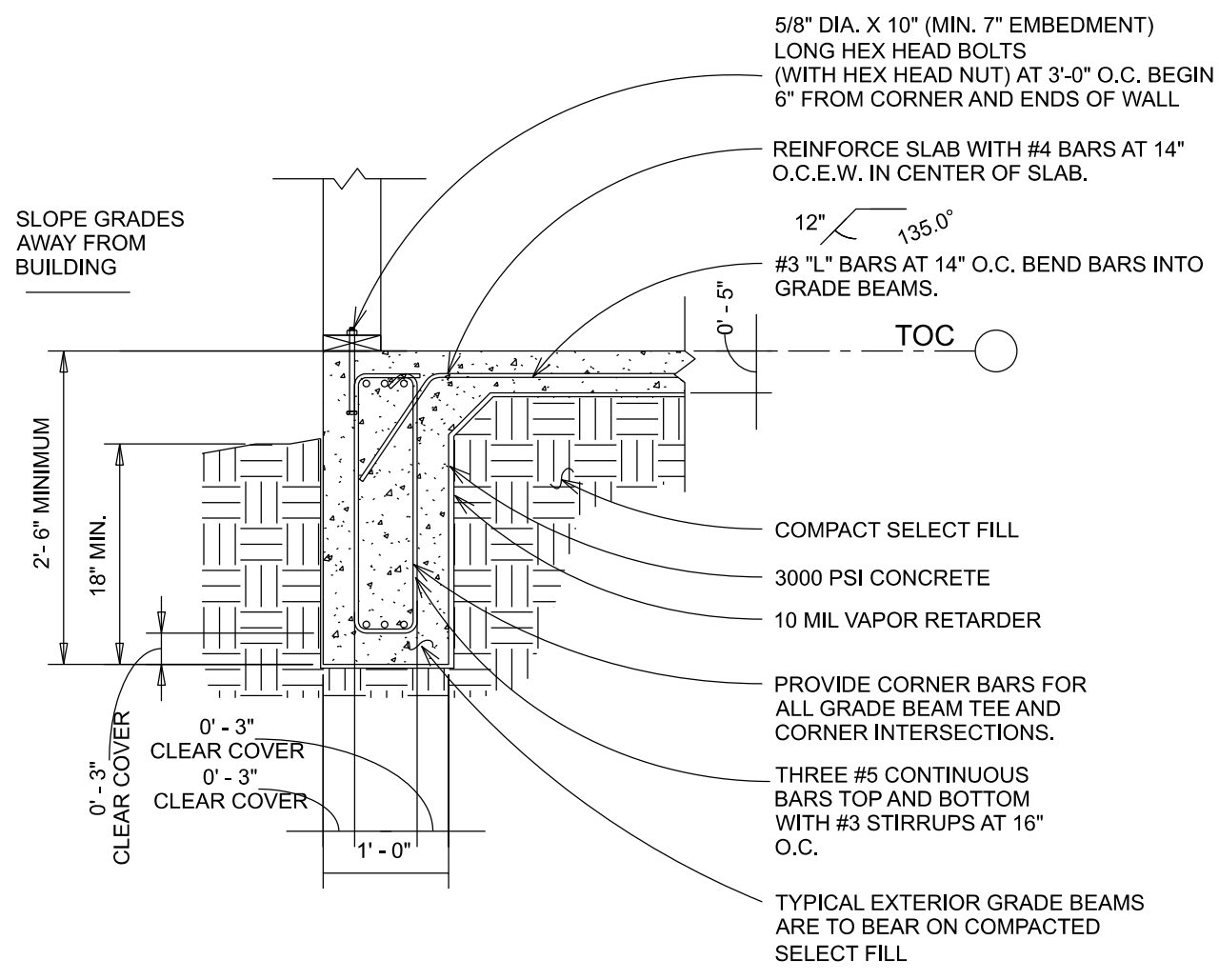
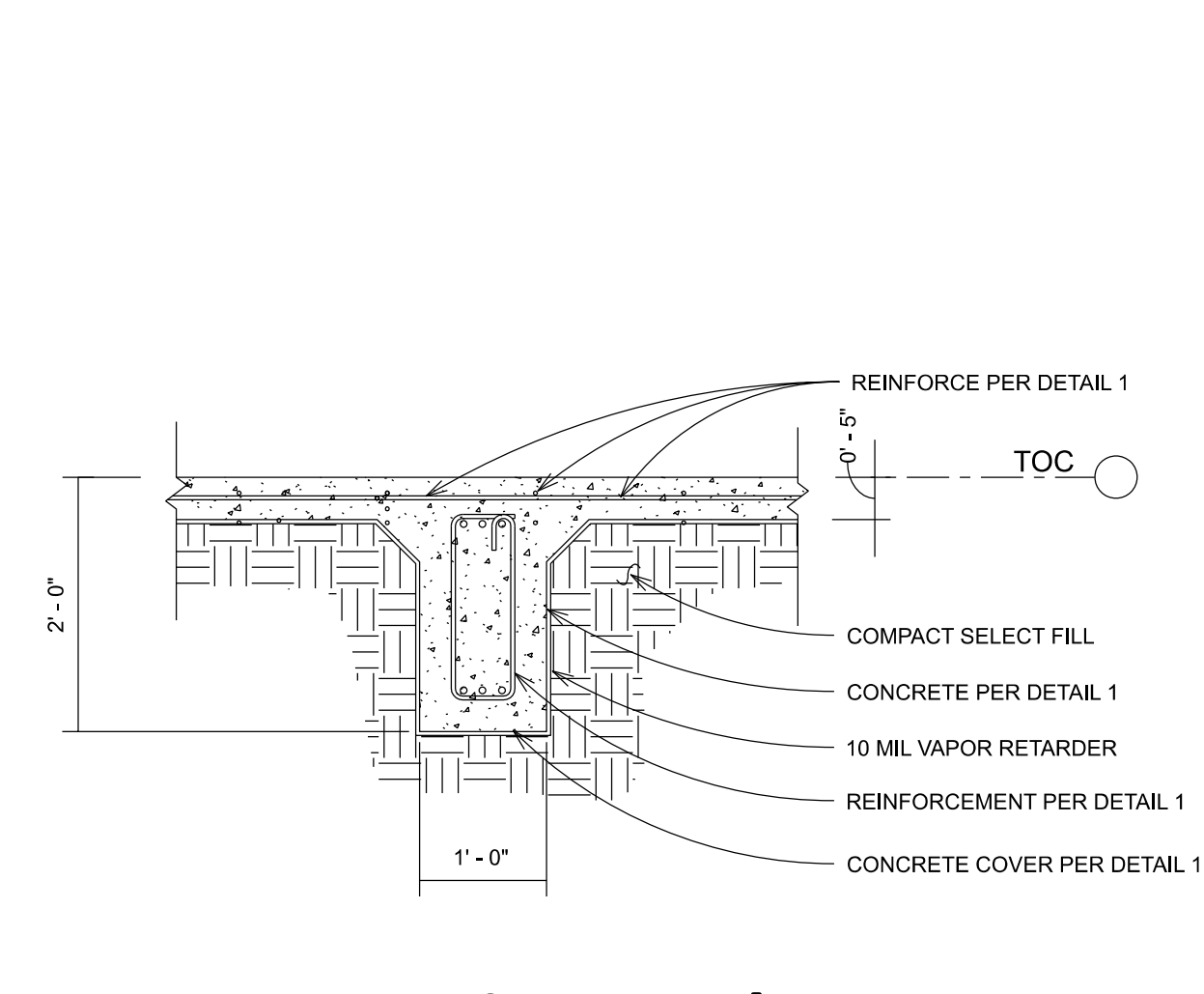


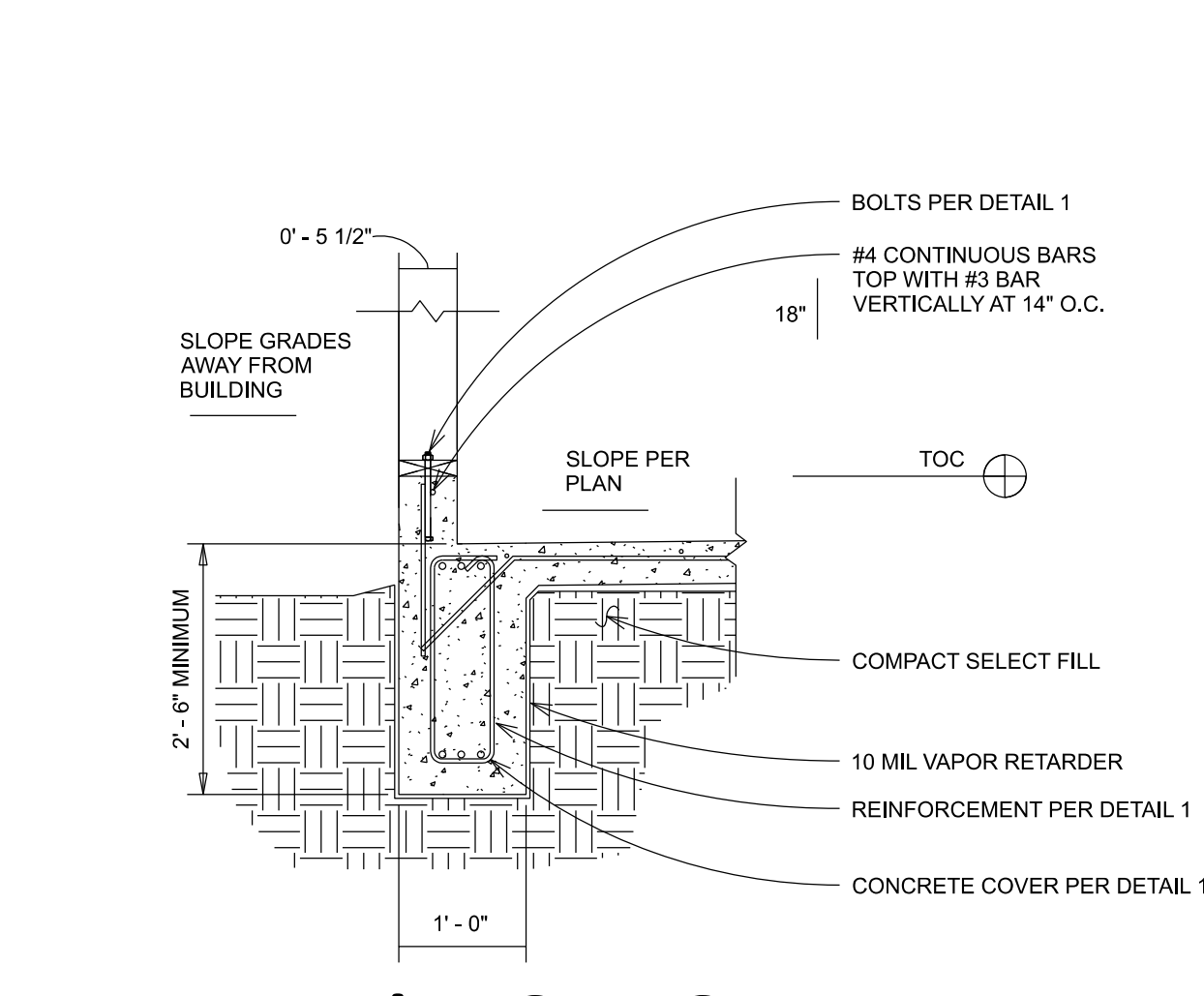
**ANCHOR BOLT NOTES:**  
 1. INSTALL 5/8"Ø ANCHOR BOLTS WITH 7" MINIMUM EMBEDMENT INTO CONCRETE AT ALL INTERIOR & EXTERIOR LOADBEARING WALLS.  
 2. EACH SILL PLATE PIECE SHALL HAVE (2) BOLTS MINIMUM. HOLD-DOWN ANCHORS ARE NOT TO BE CONSIDERED AN ANCHOR BOLT.  
 3. LOCATE BOLTS WITHIN 1'-0" OF SILL PLATE PIECE ENDS AND AT 3'-0"OC MAXIMUM.



**1 Exterior Grade Beam**  
 S0.3 NTS

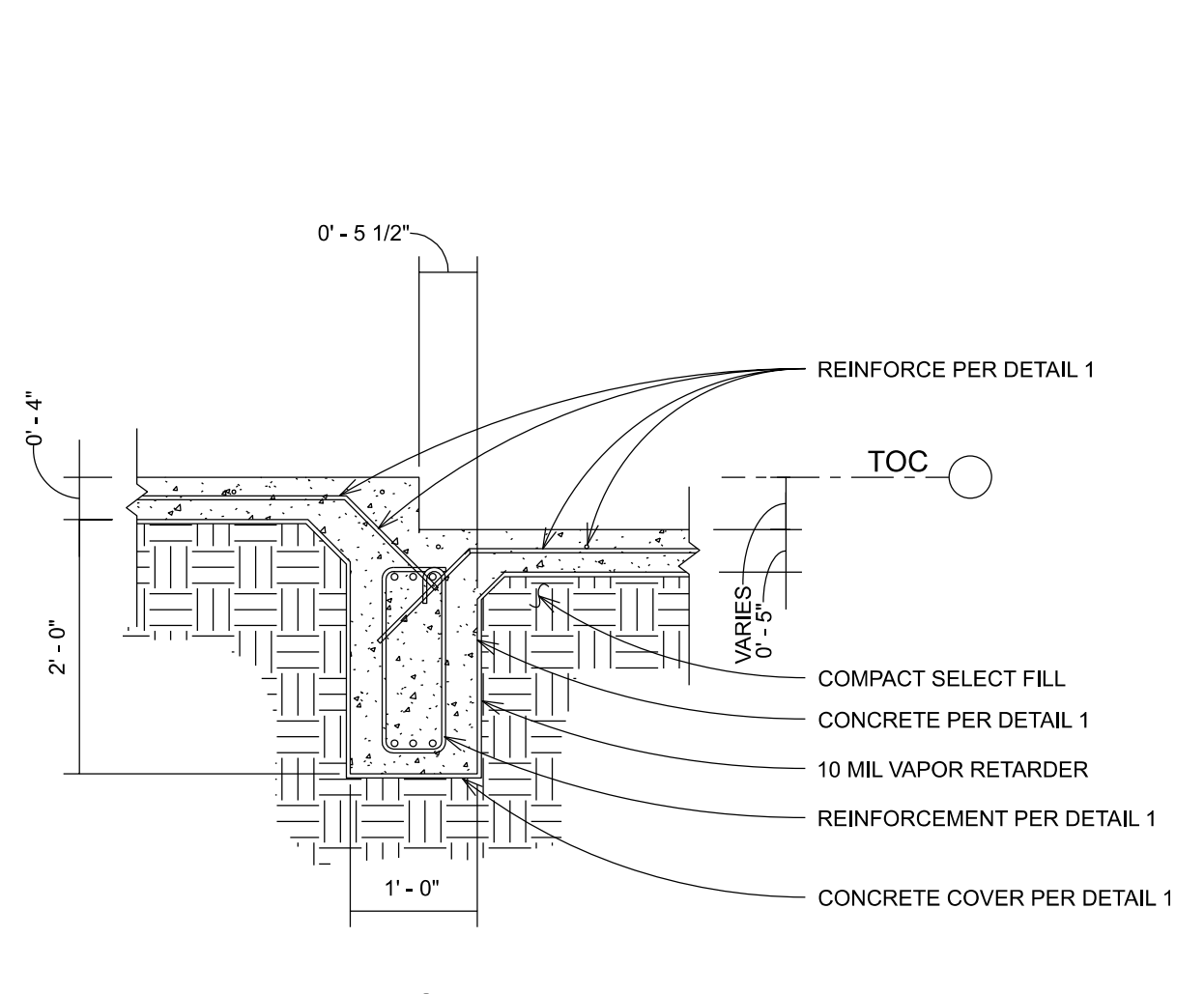


**2 Interior Grade Beam**  
 S0.3 NTS

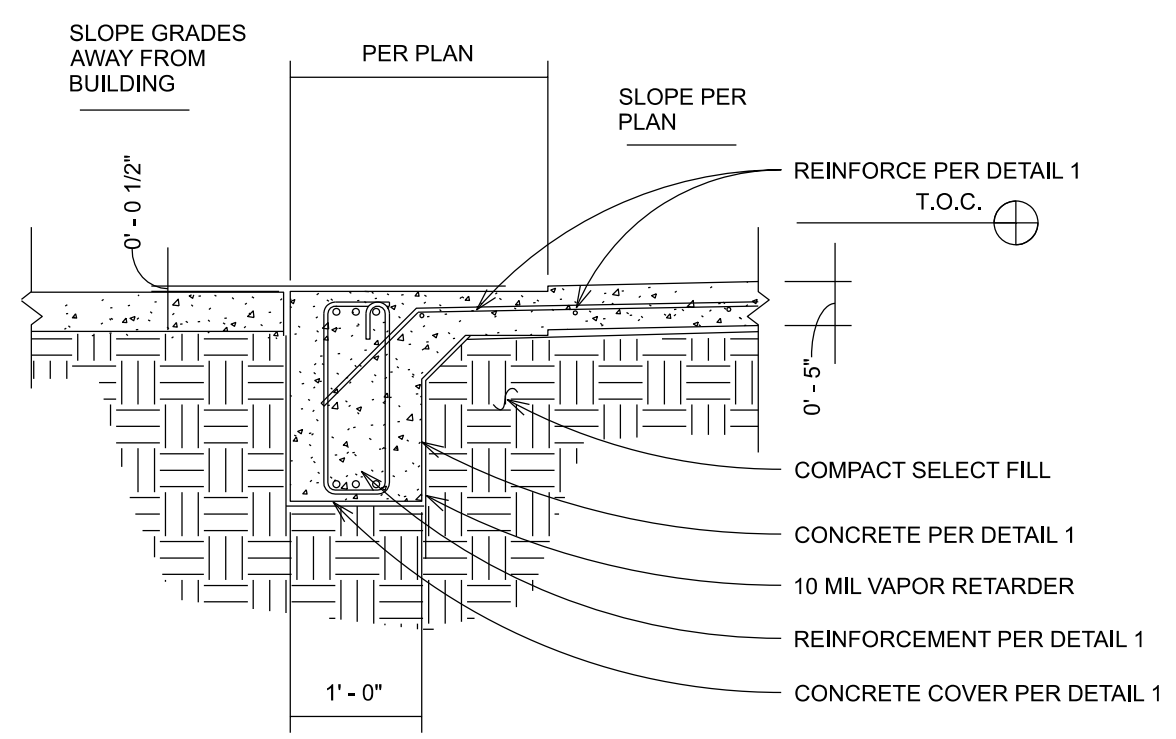


**3 Exterior G.B. Garage Front**  
 S0.3 NTS

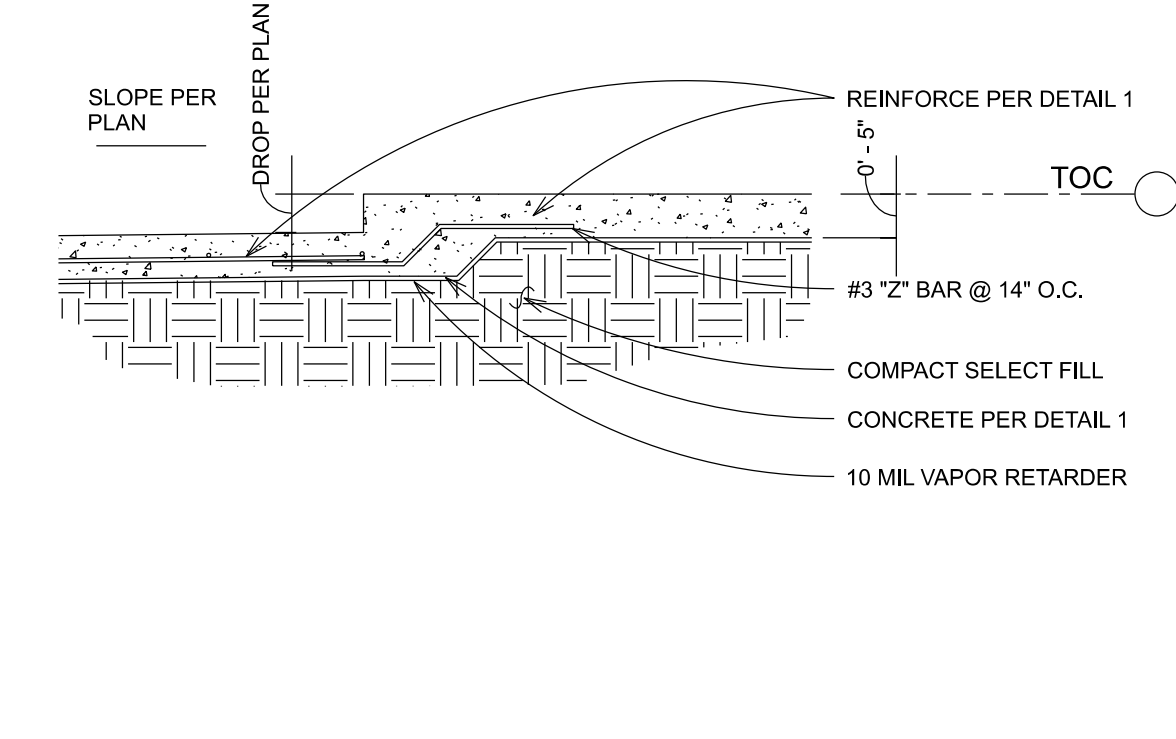
BUILDER/CONTRACTOR TO VERIFY ALL DIMENSIONS, FLOOR PENETRATIONS, DROP AREAS, AND BLOCKOUT LOCATIONS ON SITE.



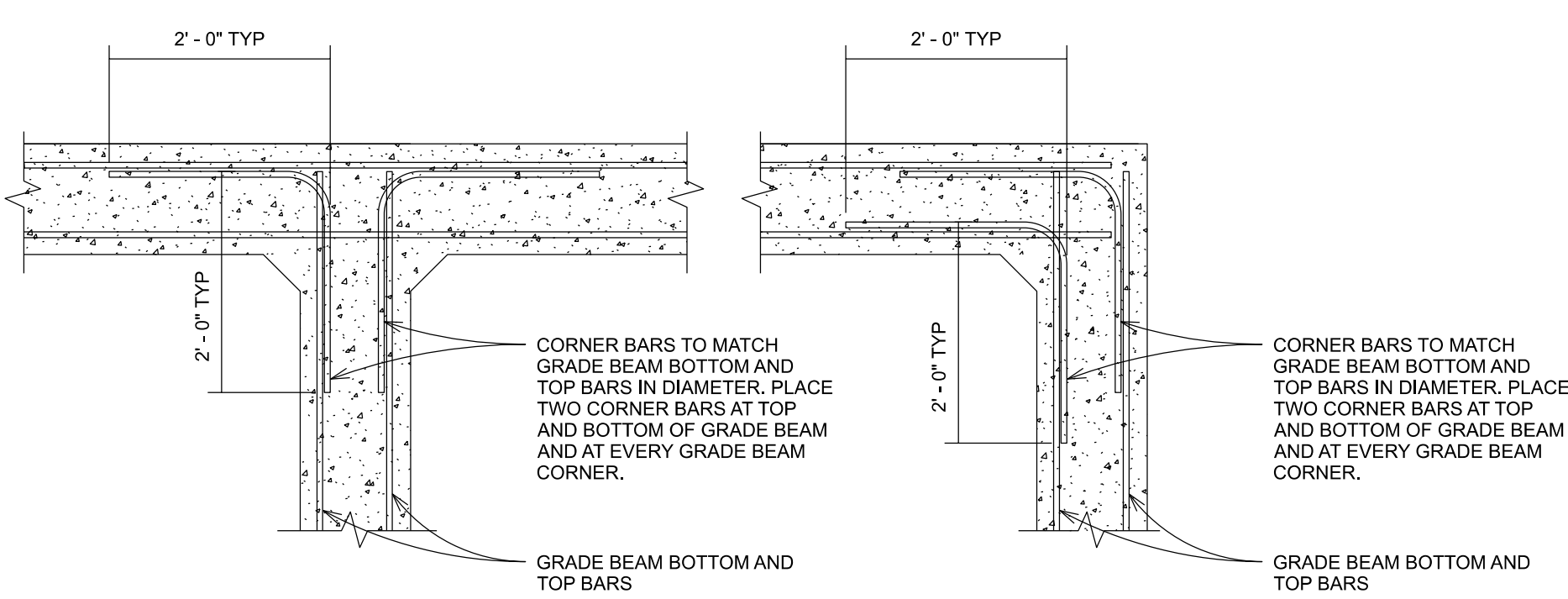
**4 Interior Beam Drop**  
 S0.3 NTS



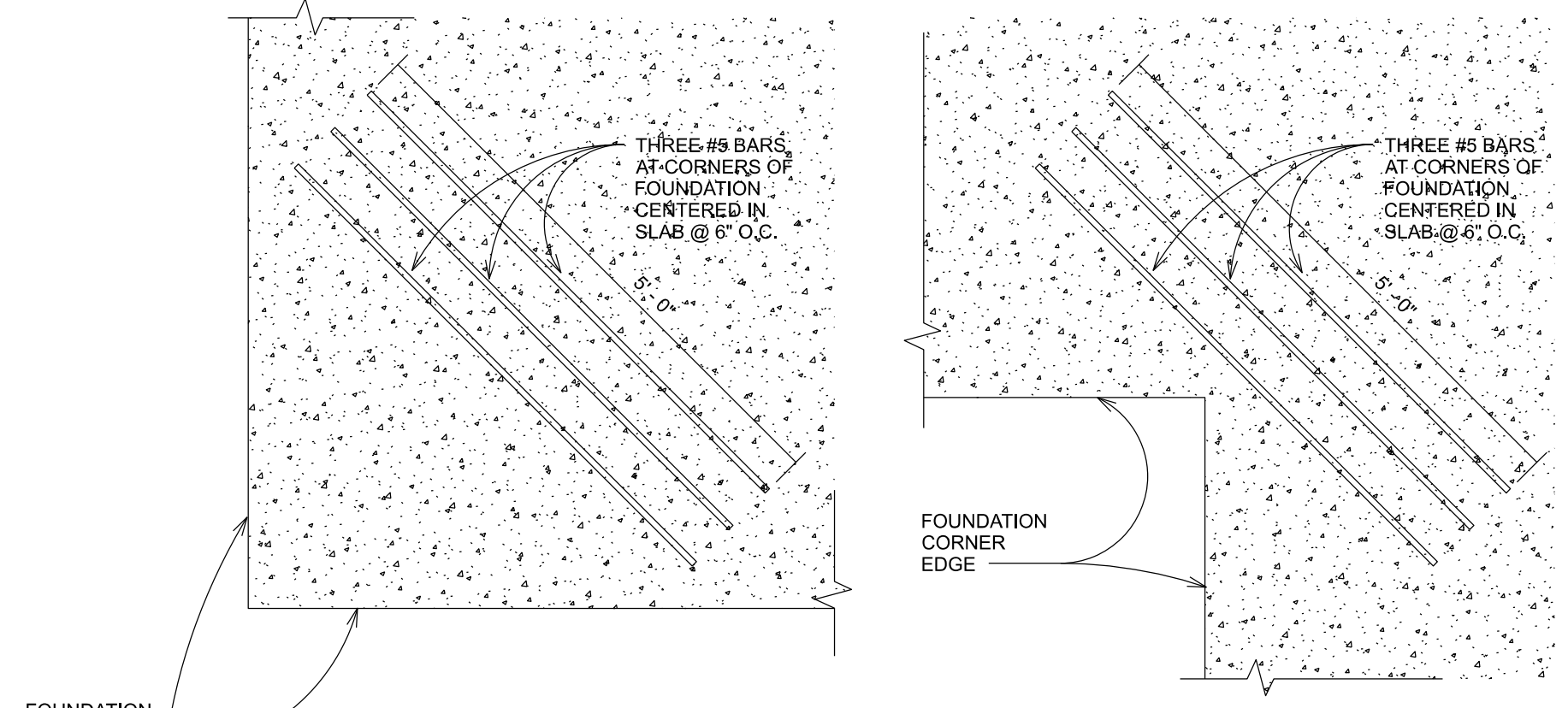
**5 Exterior G. B. Garage Drop**  
 S0.3 NTS



**6 Interior Slab Drop**  
 S0.3 NTS



**A Tee & Corner Grade Beam Tee Corner Bars**  
 S0.3 NTS



**B Extra Slab Corner Rebar**  
 S0.3 NTS

288 ENGINEERING LLC  
 TBPE FIRM NO 14418  
 PHI: 832-656-3552  
 2715 NOBLE OAK LN.  
 PEARLAND, TX-77584

Project:  
 SINGLE FAMILY RESIDENCE  
 320 TURNING BAYOU TRAIL  
 ANGLETON, TX-77515

Revisions:  
 Sheet Title:

FOUNDATION DETAILS

Drawn By: RR  
 Checked By: NS  
 Project No.: 100031  
 Project Phase: NOT FOR CONSTRUCTION  
 Date: 01/13/2022  
 Sheet No.:

**S0.3**