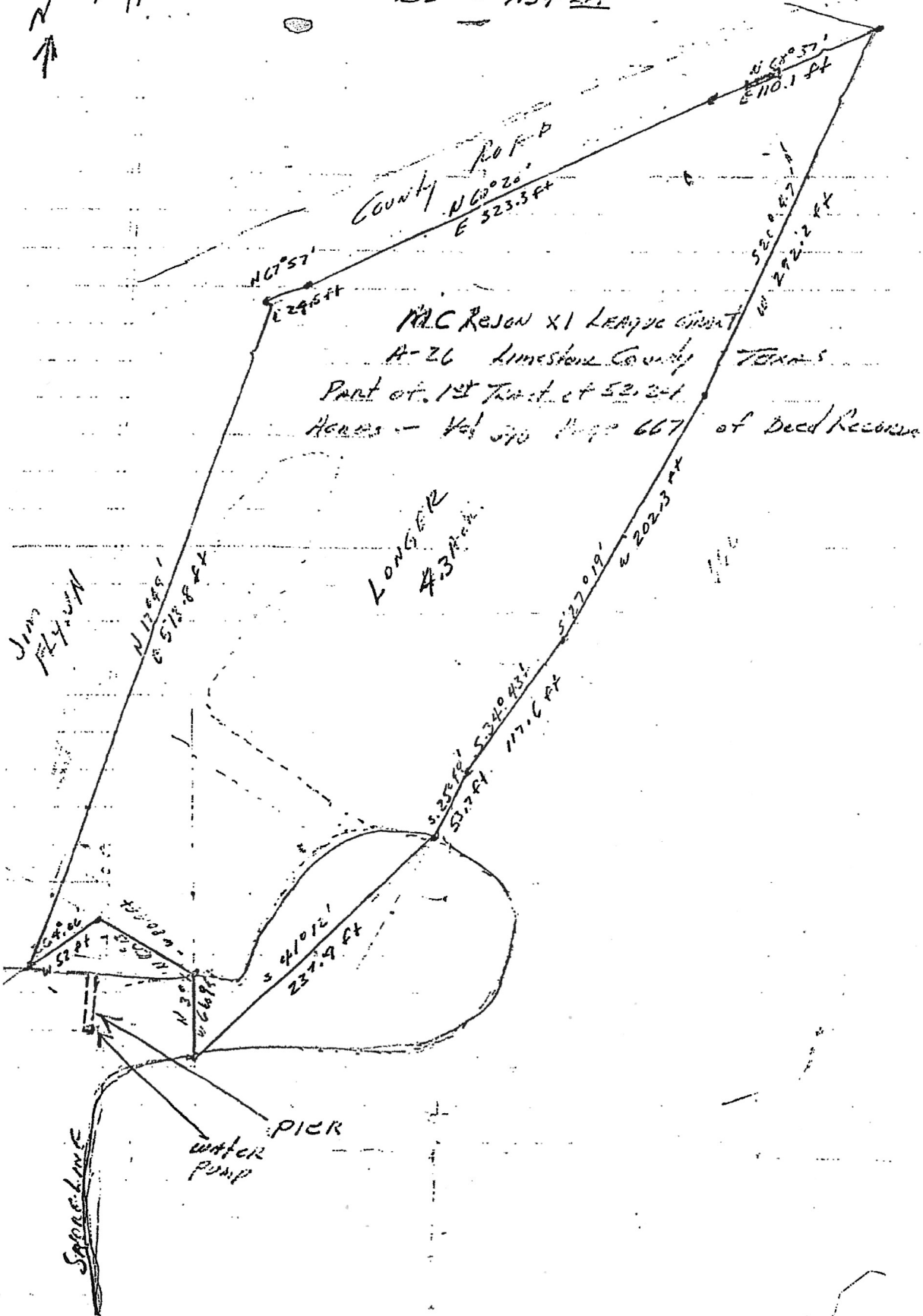


N  
↑

Beginning  
N 11° 40' 52"  
E 1191.6

Scale  $\frac{3}{32}'' = 7.54 \text{ LF}$

NE  
Corner



County Road

N 67° 57'  
E 229.5 ft

N 60° 20'  
E 523.3 ft

N 60° 57'  
E 110.1 ft

S 29° 42' W  
242.2 ft

MAC REASON XI LEAGUE GRANT  
A-26 Limestone County TEXAS  
Part of 1st Tract of 52.34  
Acres - Vol 370 Page 667 of Deed Records

LONGER  
43 ACRES

S 27° 09' W  
202.3 ft

S 35° 42' E 534.9 ft  
S 77° 41' E 171.6 ft

S 41° 02' E  
237.4 ft

N 30° 00' W  
66.9 ft

N 30° 00' W  
66.9 ft

PICK  
water  
pump

Sapona Line

Jims  
Flycatcher