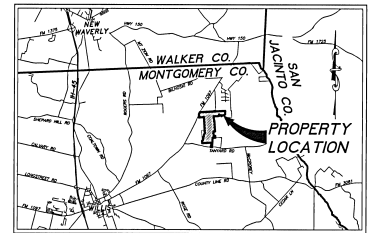
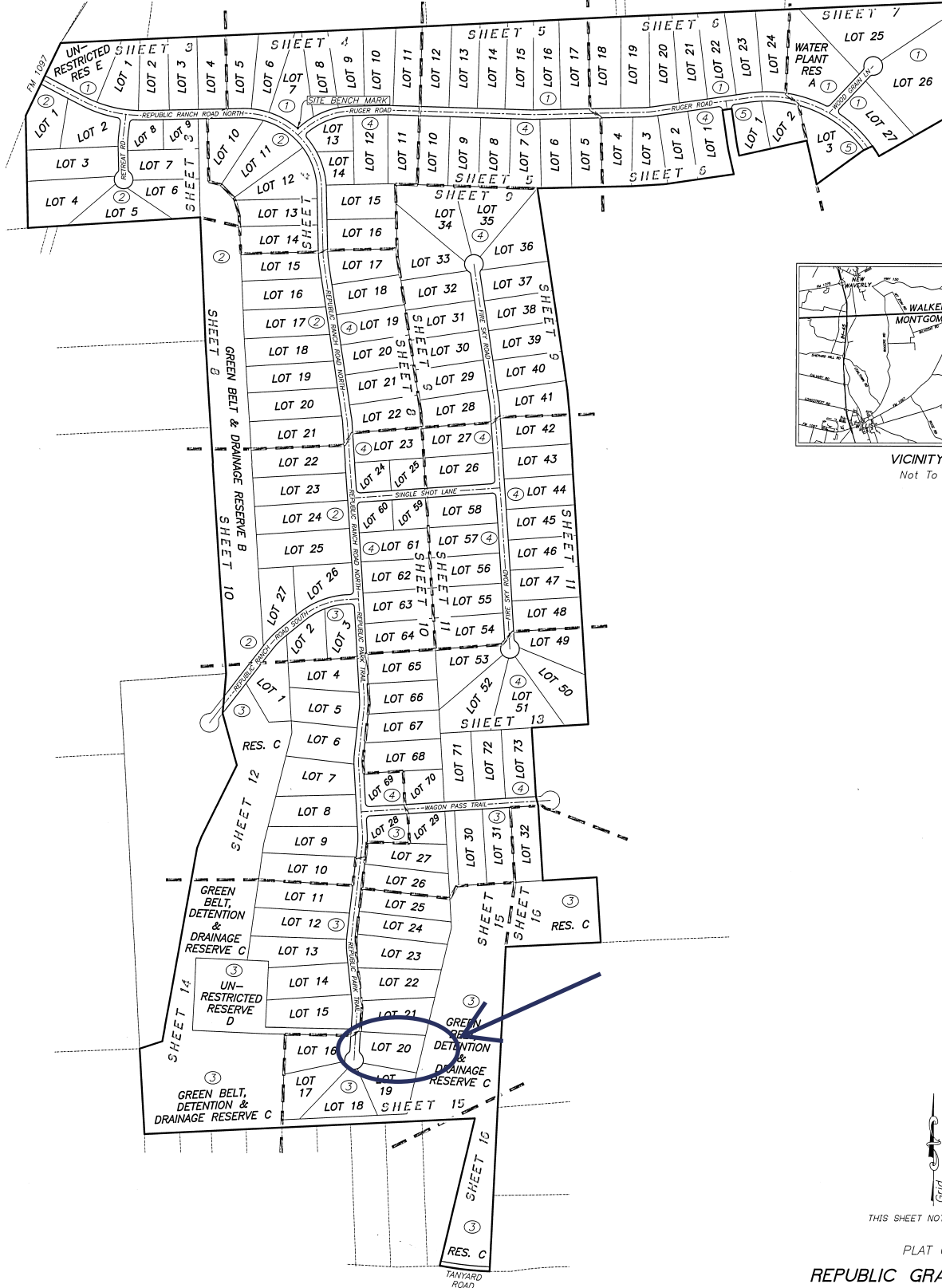


REPUBLIC GRAND RANCH SECTION 1 SHEET INDEX

OWNER / DEVELOPER
 REPUBLIC GRAND RANCH, LLC
 10154 S.H. 150,
 New Waverly, TX 77358
 920-713-1041
 Ronna Haves,
 Authorized Agent
 P. O. Box 261,
 Skull Valley, TX 76338
 rhavesconsulting@gmail.com



- LEGEND**
- ④ Block Number
 - CMF Found Concrete Monument, size and type as noted
 - PKF Found Pine Knot
 - 3/8" Found 3/8" Iron Rod
 - 4/8" Found 4/8" Iron Rod, with cap as noted, unless otherwise noted
 - 5/8" Found 5/8" Iron Rod, with cap as noted
 - Found 5/8" Iron Rod with 1-3/4" blue plastic cap mtd.
 - Found 5/8" Iron Rod with 1-3/4" blue plastic cap mtd.
 - MICHAEL, A. HAMMOND 0123 62335, UNLESS OTHERWISE NOTED
 - CFN Clerk's File Number
 - PUE, DE & NTE Public Utility Easement, Drainage Easement & Nature Trail Easement
 - MCDR Montgomery County Deed Records
 - MCPDR Montgomery County Official Public Records
 - MCPHR Montgomery County Real Property Records
 - MCPR Montgomery County Plat Records
 - VB Vegetative Buffer
 - VWDE Variable Width Private Drainage Easement

DOC # 2020146985
 Cabinet 002 Sheet 8889

INDIVIDUAL SHEETS INDEX

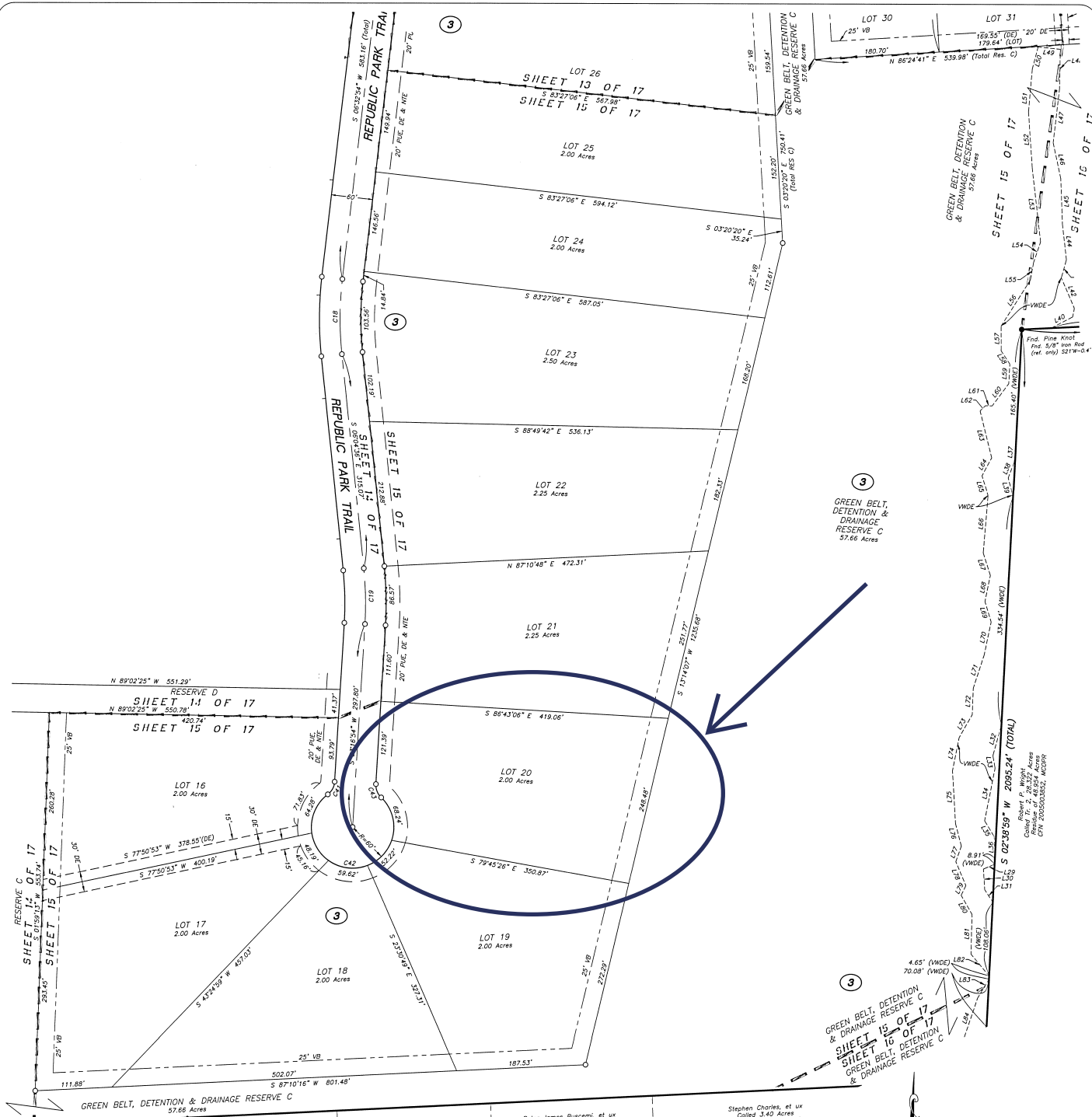
1	Vicinity Map and Sheet Number Layout	10	Block 2, 3 and 4
2	Certifications, Dedications and Notes	11	Block 4
3	Blocks 1 and 2	12	Blocks 3 and 4
4	Blocks 1, 2 and 4	13	Blocks 3 and 4
5	Blocks 1 and 4	14	Block 3
6	Blocks 1, 4 and 5	15	Block 3
7	Blocks 1 and 5, Line and Curve Tables	16	Block 3
8	Blocks 2 and 4	17	VWDE Line Tables
9	Block 4		

THIS SHEET NOT TO SCALE

PLAT OF
**REPUBLIC GRAND RANCH
 SECTION 1**
 CONTAINING 5 BLOCKS, 162 LOTS, 5 RESERVES

A SUBDIVISION CONTAINING 458.42 ACRES OF LAND,
 OUT OF THE 4818.84 ACRE REPUBLIC GRAND
 RANCH, LLC TRACT, CLERK'S FILE No. 2019113827,
 MONTGOMERY COUNTY OFFICIAL PUBLIC RECORDS
 JOSE MARIA DE LA GARZA SURVEY, A-15
 MONTGOMERY COUNTY, TEXAS

OCTOBER 2020
 Namken, Inc.
 P.O. Box 1158, New Waverly, TX 77358
 TPELS Firm No. 10194090
 216-661-3329



DOC # 2020146985
Cabinet 00Z Sheet 6903

OWNER / DEVELOPER
REPUBLIC GRAND RANCH, LLC
1015A S.H. 150,
New Waverly, TX 77358
925-713-1841

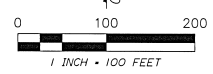
Renee Howes,
Authorized Agent
P. O. Box 261,
Skull Valley, AZ 85338
rhowesconsulting@gmail.com

Stephen Charles, et ux
Called 3.40 Acres
CFN 9641236, MCOPRR

Jeff McWhorter, et ux
Called 4.6 Acres
CFN 2000068351, MCOPRR

Wesley Bush, et ux
Called 4.454 Acres
CFN 9906031, MCOPRR

Marshall B. Elmore, et ux
Called 4.282 Acres
CFN 2003028443, MCOPRR



PLAT OF
REPUBLIC GRAND RANCH
SECTION 1
CONTAINING 5 BLOCKS, 162 LOTS, 5 RESERVES

A SUBDIVISION CONTAINING 458.42 ACRES OF LAND,
OUT OF THE 4818.84 ACRE REPUBLIC GRAND
RANCH, LLC TRACT, CLERK'S FILE NO. 2019113827,
MONTGOMERY COUNTY OFFICIAL PUBLIC RECORDS
JOSE MARIA DE LA GARZA SURVEY, A-15
MONTGOMERY COUNTY, TEXAS

OCTOBER 2020

Namken, Inc.
P.O. Box 1158, New Waverly, TX 77358
TSP/ELS Firm No. 10194090
336-661-3325

Job No. 20-007

SHEET 15 OF 17

INDIVIDUAL SHEETS INDEX			
1	Vicinity Map and Sheet Number Layout	10	Block 2, 3 and 4
2	Certifications, Dedications and Notes	11	Block 4
3	Blocks 1 and 2	12	Blocks 3 and 4
4	Blocks 1, 2 and 4	13	Blocks 3 and 4
5	Blocks 1 and 4	14	Block 3
6	Blocks 1, 4 and 5	15	Block 3
7	Blocks 1 and 5, Line and Curve Tables	16	Block 3
8	Blocks 2 and 4	17	VWDE Line Tables
9	Block 4		

- LEGEND**
- Block Number
 - C&M Found Concrete Monument, size and type as noted
 - PKF Found Pine Knot
 - 5/8" Found 5/8" Iron Rod
 - 4/8" (A/RP) Found 1/2" Iron Rod with cap as noted, unless otherwise noted
 - 5/8" Found 5/8" Iron Rod with cap as noted
 - Found 5/8" Iron Rod with 1-3/4" blue plastic cap mkt.
 - MICHAEL A. WALKER W/LS 65155 UNLESS otherwise noted
 - CFN Clerk's File Number
 - PUE, DE & NTE Public Utility Easement, Drainage Easement & Nature Trail Easement
 - MCOR Montgomery County Deed Records
 - MCOPR Montgomery County Official Public Records
 - MCOPRR Montgomery County Official Public Records
 - MCPR Montgomery County Plat Records
 - VB Vegetative Buffer
 - VWDE Variable Width Private Drainage Easement