



Montague



ELEVATION A left



ELEVATION B



ELEVATION C



ELEVATION D



ELEVATION E

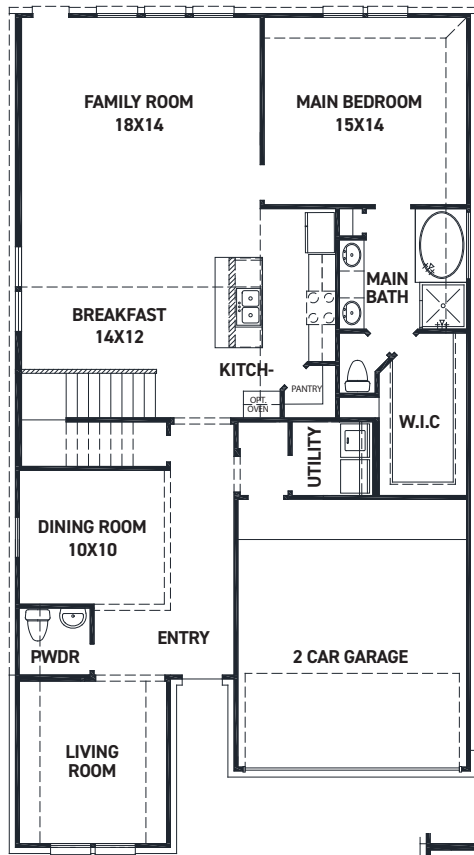
REV 10/22 (451M)



These drawings are conceptual only and are for the convenience of reference. They should not be relied upon as representations, express or implied, of the final detail of the residences. The builder expressly reserves the right to make modifications, revisions, and changes it deems desirable in its sole and absolute discretion. Dimensions and square footages are approximate and may vary with actual construction.



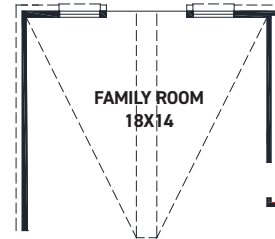
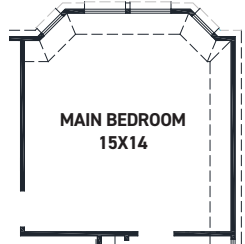
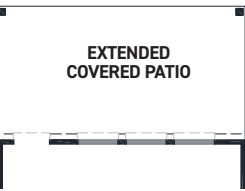
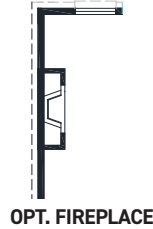
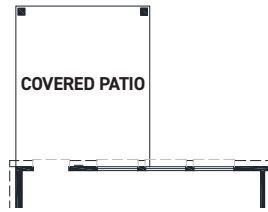
newmarkhomes.com



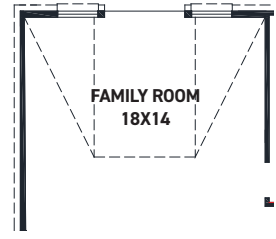
FIRST FLOOR PLAN

FEATURES:

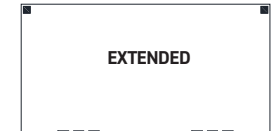
- 2,259 SQUARE FT.
- 3 BEDROOM
- 2 1/2 BATHROOM
- 2 CAR GARAGE



OPT. POINTED VAULT



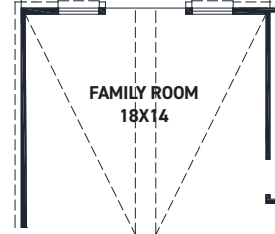
OPT. ARCHED VAULT



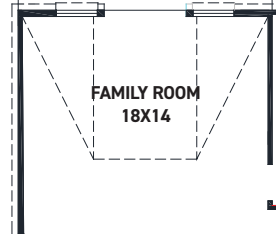
EXTENDED



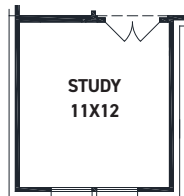
EXTENDED



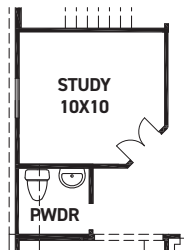
OPT. EXTENDED COVERED PATIO W/ POINTED VAULT



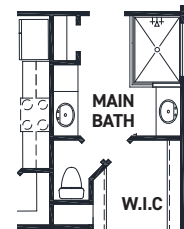
OPT. EXTENDED COVERED PATIO W/ ARCHED VAULT



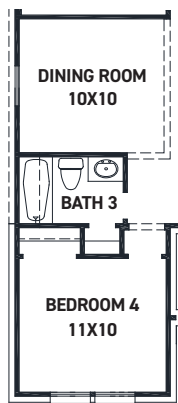
OPT. STUDY @ LIVING



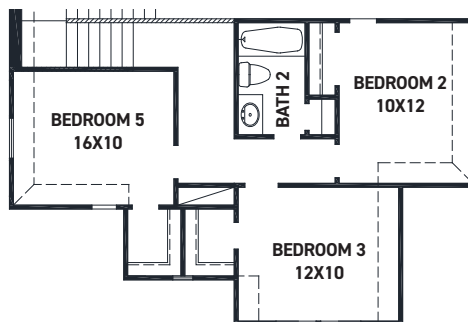
OPT. STUDY @ DINING



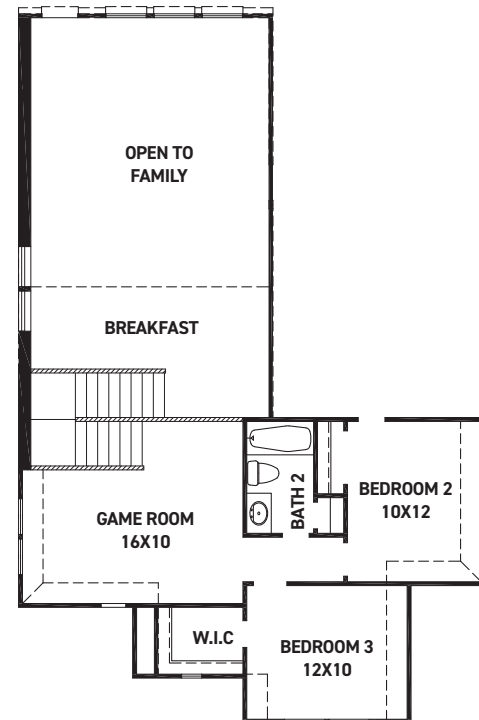
OPT. ENLARGED MAIN SHOWER



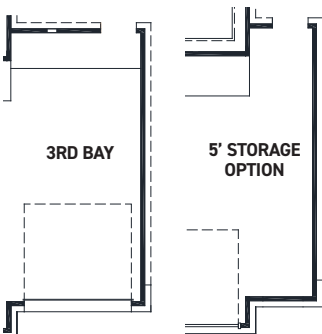
OPT. BEDROOM 4 W/ BATH 3 @ LIVING



OPT. BEDROOM 5 @ GAME ROOM



SECOND FLOOR PLAN



REV 10/22 (451M)



These drawings are conceptual only and are for the convenience of reference. They should not be relied upon as representations, express or implied, of the final detail of the residences. The builder expressly reserves the right to make modifications, revisions, and changes it deems desirable in its sole and absolute discretion. Dimensions and square footages are approximate and may vary with actual construction.