

GENERAL NOTES:

- GALVANIZED FLASHING: SEE GAUGE AT ALL VALLEYS, HIPS, AND BRIDGE. PROVIDE FOR VENT THROUGH ROOFING THROUGH ROOF WITH DANCES AND GUTTERS BEYOND GUTTER.
- GALVANIZED IRON FLASHING AT ALL ROOF TO WALL AND ROOF TO CHIMNEY INTERFACES.
- ROOF GUTTERS AND DOWN SPOUTS PER SPECIFICATIONS SEE BUILDER.
- CONTINUOUS GALVANIZED IRON EAVE FLASHING.
- ATTIC VENTILATION TYPE AND AMOUNT PER SPECIFICATIONS SEE BUILDER.
- APPLIED CRACKED ROOFING SHALL BE APPLIED OVER MAIN ROOF DECK AND FRAME.
- ROOF FLATE HEIGHTS SHOWN ARE AT EXTERIOR FRAME WALL CONDITIONS. ADJUST ROOF FLATE HEIGHT FROM HEIGHT SHOWN AT CONDITIONS WHERE THE ROOF IS SUPPORTED BY BEAMS CENTERED OVER LOAD BEARING COLUMNS.

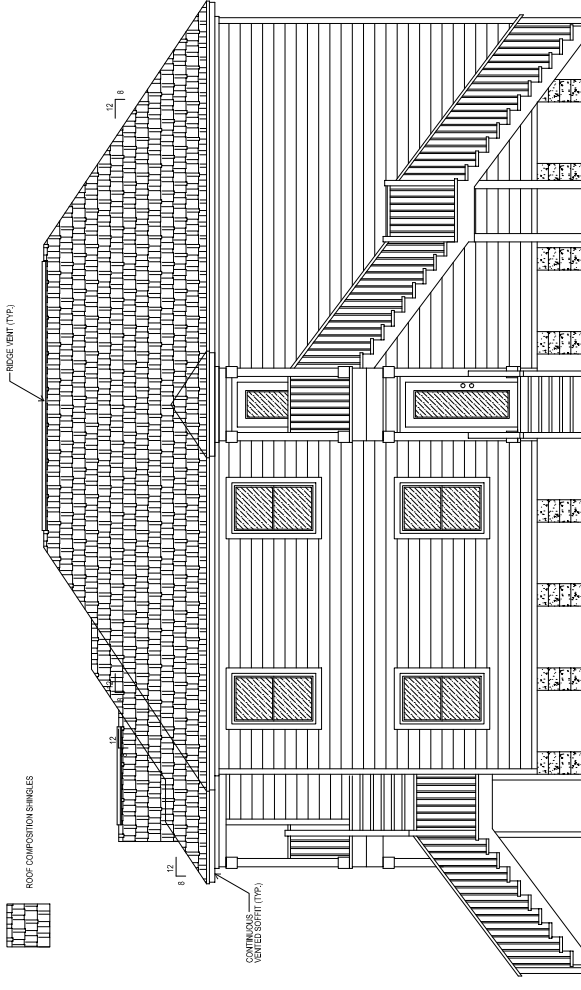
ROOF SLOPE NOTES:
FOR ROOF SLOPES OF 4:12 OR GREATER, 1 LAYER OF 5/8" LB. FT.
FOR ROOF SLOPES FROM 2:12 TO 4:12, 2 LAYERS OF 5/8" LB. FT.
FOR ROOF SLOPES UNDER 2:12, ASPHALT SHINGLES ARE NOT ALLOWED.



CONTINUOUS VENTED SOFFIT (TYP.)

ROOF VENT (TYP.)

ROOF VENT (TYP.)



19'4" 2ND F.L. HT.

19'4" 2ND F.L. HT.

10'4" 2ND F.F.

10'4" 2ND F.F.

8'4" F.L. HT.

8'4" F.L. HT.

FF+425

FF+425

500'VR D.F.E.+42Z

500'VR D.F.E.+42Z

100'VR B.F.E.+35Z

100'VR B.F.E.+35Z

NGS-387

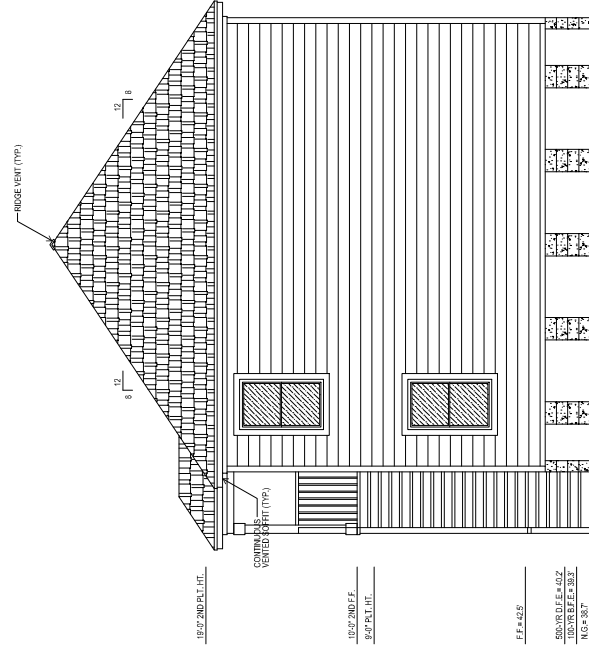
NGS-387

FRONT ELEVATION

RIGHT ELEVATION

CONTINUOUS VENTED SOFFIT (TYP.)

ROOF VENT (TYP.)



19'4" 2ND F.L. HT.

19'4" 2ND F.L. HT.

10'4" 2ND F.F.

10'4" 2ND F.F.

8'4" F.L. HT.

8'4" F.L. HT.

FF+425

FF+425

500'VR D.F.E.+42Z

500'VR D.F.E.+42Z

100'VR B.F.E.+35Z

100'VR B.F.E.+35Z

NGS-387

NGS-387

19'4" 2ND F.L. HT.

19'4" 2ND F.L. HT.

10'4" 2ND F.F.

10'4" 2ND F.F.

8'4" F.L. HT.

8'4" F.L. HT.

FF+425

FF+425

500'VR D.F.E.+42Z

500'VR D.F.E.+42Z

100'VR B.F.E.+35Z

100'VR B.F.E.+35Z

NGS-387

NGS-387

LEFT ELEVATION

REAR ELEVATION