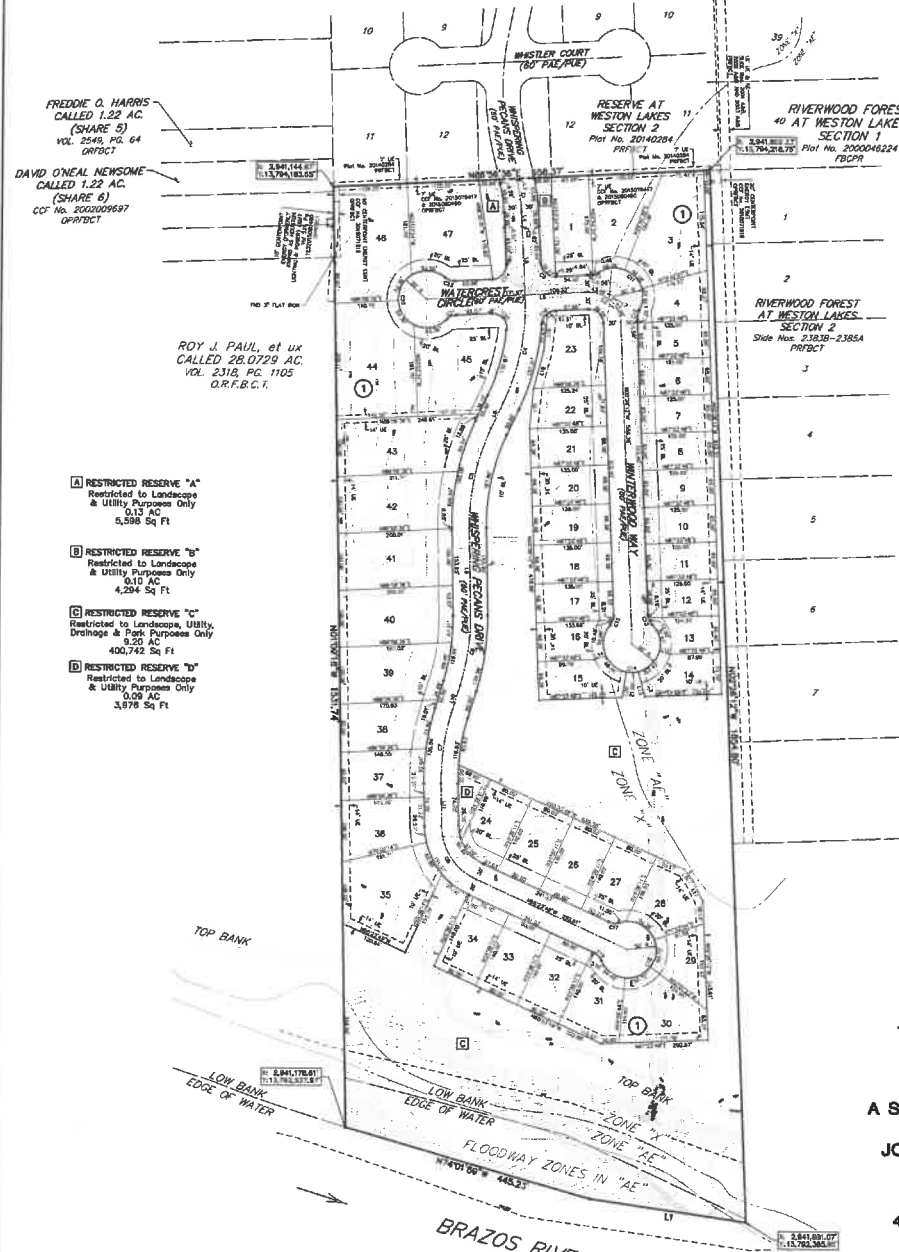


LINE	BEARING	DISTANCE	LINE	BEARING	DISTANCE	LINE	BEARING	DISTANCE
1	N89°46'42" W	277.34	31	S00°00'00" E	25.00	61	S00°00'00" E	25.00
2	S89°46'42" W	277.34	32	S00°00'00" E	25.00	62	S00°00'00" E	25.00
3	N89°46'42" E	277.34	33	S00°00'00" E	25.00	63	S00°00'00" E	25.00
4	S89°46'42" E	277.34	34	S00°00'00" E	25.00	64	S00°00'00" E	25.00
5	N89°46'42" W	277.34	35	S00°00'00" E	25.00	65	S00°00'00" E	25.00
6	S89°46'42" W	277.34	36	S00°00'00" E	25.00	66	S00°00'00" E	25.00
7	N89°46'42" E	277.34	37	S00°00'00" E	25.00	67	S00°00'00" E	25.00
8	S89°46'42" E	277.34	38	S00°00'00" E	25.00	68	S00°00'00" E	25.00
9	N89°46'42" W	277.34	39	S00°00'00" E	25.00	69	S00°00'00" E	25.00
10	S89°46'42" W	277.34	40	S00°00'00" E	25.00	70	S00°00'00" E	25.00
11	N89°46'42" E	277.34	41	S00°00'00" E	25.00	71	S00°00'00" E	25.00
12	S89°46'42" E	277.34	42	S00°00'00" E	25.00	72	S00°00'00" E	25.00
13	N89°46'42" W	277.34	43	S00°00'00" E	25.00	73	S00°00'00" E	25.00
14	S89°46'42" W	277.34	44	S00°00'00" E	25.00	74	S00°00'00" E	25.00
15	N89°46'42" E	277.34	45	S00°00'00" E	25.00	75	S00°00'00" E	25.00
16	S89°46'42" E	277.34	46	S00°00'00" E	25.00	76	S00°00'00" E	25.00
17	N89°46'42" W	277.34	47	S00°00'00" E	25.00	77	S00°00'00" E	25.00
18	S89°46'42" W	277.34	48	S00°00'00" E	25.00	78	S00°00'00" E	25.00
19	N89°46'42" E	277.34	49	S00°00'00" E	25.00	79	S00°00'00" E	25.00
20	S89°46'42" E	277.34	50	S00°00'00" E	25.00	80	S00°00'00" E	25.00

DISTRICT NAMES	
WATER	FIRST BOND COUNTY, TEXAS, DISTRICT NO. 1
WATER	FIRST BOND COUNTY, TEXAS, DISTRICT NO. 2
WATER	FIRST BOND COUNTY, TEXAS, DISTRICT NO. 3
WATER	FIRST BOND COUNTY, TEXAS, DISTRICT NO. 4
WATER	FIRST BOND COUNTY, TEXAS, DISTRICT NO. 5
WATER	FIRST BOND COUNTY, TEXAS, DISTRICT NO. 6
WATER	FIRST BOND COUNTY, TEXAS, DISTRICT NO. 7
WATER	FIRST BOND COUNTY, TEXAS, DISTRICT NO. 8
WATER	FIRST BOND COUNTY, TEXAS, DISTRICT NO. 9
WATER	FIRST BOND COUNTY, TEXAS, DISTRICT NO. 10
WATER	FIRST BOND COUNTY, TEXAS, DISTRICT NO. 11
WATER	FIRST BOND COUNTY, TEXAS, DISTRICT NO. 12
WATER	FIRST BOND COUNTY, TEXAS, DISTRICT NO. 13
WATER	FIRST BOND COUNTY, TEXAS, DISTRICT NO. 14
WATER	FIRST BOND COUNTY, TEXAS, DISTRICT NO. 15
WATER	FIRST BOND COUNTY, TEXAS, DISTRICT NO. 16
WATER	FIRST BOND COUNTY, TEXAS, DISTRICT NO. 17
WATER	FIRST BOND COUNTY, TEXAS, DISTRICT NO. 18
WATER	FIRST BOND COUNTY, TEXAS, DISTRICT NO. 19
WATER	FIRST BOND COUNTY, TEXAS, DISTRICT NO. 20

**General Notes**

- All cut-and-put roads are fifty feet (50'), unless otherwise noted.
- All block corners and sub-block corners to tangent roads are twenty-five feet (25').
- All "L" shaped lots are fifty feet (50') wide at the narrow end.
- All "T" shaped lots are fifty feet (50') wide at the narrow end.
- All "Y" shaped lots are fifty feet (50') wide at the narrow end.
- All "Z" shaped lots are fifty feet (50') wide at the narrow end.
- All "U" shaped lots are fifty feet (50') wide at the narrow end.
- All "V" shaped lots are fifty feet (50') wide at the narrow end.
- All "W" shaped lots are fifty feet (50') wide at the narrow end.
- All "X" shaped lots are fifty feet (50') wide at the narrow end.
- All "Y" shaped lots are fifty feet (50') wide at the narrow end.
- All "Z" shaped lots are fifty feet (50') wide at the narrow end.
- All "AA" shaped lots are fifty feet (50') wide at the narrow end.
- All "BB" shaped lots are fifty feet (50') wide at the narrow end.
- All "CC" shaped lots are fifty feet (50') wide at the narrow end.
- All "DD" shaped lots are fifty feet (50') wide at the narrow end.
- All "EE" shaped lots are fifty feet (50') wide at the narrow end.
- All "FF" shaped lots are fifty feet (50') wide at the narrow end.
- All "GG" shaped lots are fifty feet (50') wide at the narrow end.
- All "HH" shaped lots are fifty feet (50') wide at the narrow end.
- All "II" shaped lots are fifty feet (50') wide at the narrow end.
- All "JJ" shaped lots are fifty feet (50') wide at the narrow end.
- All "KK" shaped lots are fifty feet (50') wide at the narrow end.
- All "LL" shaped lots are fifty feet (50') wide at the narrow end.
- All "MM" shaped lots are fifty feet (50') wide at the narrow end.
- All "NN" shaped lots are fifty feet (50') wide at the narrow end.
- All "OO" shaped lots are fifty feet (50') wide at the narrow end.
- All "PP" shaped lots are fifty feet (50') wide at the narrow end.
- All "QQ" shaped lots are fifty feet (50') wide at the narrow end.
- All "RR" shaped lots are fifty feet (50') wide at the narrow end.
- All "SS" shaped lots are fifty feet (50') wide at the narrow end.
- All "TT" shaped lots are fifty feet (50') wide at the narrow end.
- All "UU" shaped lots are fifty feet (50') wide at the narrow end.
- All "VV" shaped lots are fifty feet (50') wide at the narrow end.
- All "WW" shaped lots are fifty feet (50') wide at the narrow end.
- All "XX" shaped lots are fifty feet (50') wide at the narrow end.
- All "YY" shaped lots are fifty feet (50') wide at the narrow end.
- All "ZZ" shaped lots are fifty feet (50') wide at the narrow end.



FREDDIE G. HARRIS  
CALLED 1.22 AC.  
(SHARE 5)  
VOL. 2549, PG. 64  
OPRFCT

DAVID O'NEAL NEWSOME  
CALLED 1.22 AC.  
(SHARE 6)  
CC No. 200200687  
OPRFCT

ROY J. PAUL, et ux  
CALLED 28.0729 AC.  
VOL. 2318, PG. 1105  
O.R.F.B.C.I.

- A** RESTRICTED RESERVE "A"  
Restricted to Landscape  
& Utility Purposes Only  
0.13 AC  
5,598 Sq Ft
- B** RESTRICTED RESERVE "B"  
Restricted to Landscape  
& Utility Purposes Only  
0.10 AC  
4,294 Sq Ft
- C** RESTRICTED RESERVE "C"  
Restricted to Landscape, Utility,  
Drainage & Park Purposes Only  
3.20 AC  
400,742 Sq Ft
- D** RESTRICTED RESERVE "D"  
Restricted to Landscape  
& Utility Purposes Only  
0.09 AC  
3,678 Sq Ft

**RESERVE AT WESTON LAKES SECTION 4**  
A SUBDIVISION OF 27.49 ACRES OF LAND  
OUT OF THE  
JOHN RANDON SURVEY, ABSTRACT 76  
CITY OF WESTON LAKES  
FORT BEND COUNTY, TEXAS  
47 LOTS 4 RESERVES 1 BLOCK  
MARCH 2019

DEVELOPER/OWNER: SURFACE PROPERTIES INVESTMENT FUND  
BY L.P., A TEXAS LIMITED PARTNERSHIP

ENGINEER/SURVEYOR: J.C. JONES & CARTER  
1500 WESTON DRIVE  
FURNACE, TEXAS 77441  
ATTN: ANGE K. SANCHEZ, P.E.

