

Floor Finish Schedule

Room Number	Finish Description
101	1/2" x 8" Oak
102	1/2" x 8" Oak
103	1/2" x 8" Oak
104	1/2" x 8" Oak
105	1/2" x 8" Oak
106	1/2" x 8" Oak
107	1/2" x 8" Oak
108	1/2" x 8" Oak
109	1/2" x 8" Oak
110	1/2" x 8" Oak
111	1/2" x 8" Oak
112	1/2" x 8" Oak
113	1/2" x 8" Oak
114	1/2" x 8" Oak
115	1/2" x 8" Oak
116	1/2" x 8" Oak
117	1/2" x 8" Oak
118	1/2" x 8" Oak
119	1/2" x 8" Oak
120	1/2" x 8" Oak
121	1/2" x 8" Oak
122	1/2" x 8" Oak
123	1/2" x 8" Oak
124	1/2" x 8" Oak
125	1/2" x 8" Oak
126	1/2" x 8" Oak
127	1/2" x 8" Oak
128	1/2" x 8" Oak
129	1/2" x 8" Oak
130	1/2" x 8" Oak
131	1/2" x 8" Oak
132	1/2" x 8" Oak
133	1/2" x 8" Oak
134	1/2" x 8" Oak
135	1/2" x 8" Oak
136	1/2" x 8" Oak
137	1/2" x 8" Oak
138	1/2" x 8" Oak
139	1/2" x 8" Oak
140	1/2" x 8" Oak
141	1/2" x 8" Oak
142	1/2" x 8" Oak
143	1/2" x 8" Oak
144	1/2" x 8" Oak
145	1/2" x 8" Oak
146	1/2" x 8" Oak
147	1/2" x 8" Oak
148	1/2" x 8" Oak
149	1/2" x 8" Oak
150	1/2" x 8" Oak
151	1/2" x 8" Oak
152	1/2" x 8" Oak
153	1/2" x 8" Oak
154	1/2" x 8" Oak
155	1/2" x 8" Oak
156	1/2" x 8" Oak
157	1/2" x 8" Oak
158	1/2" x 8" Oak
159	1/2" x 8" Oak
160	1/2" x 8" Oak

1st Floor Plan

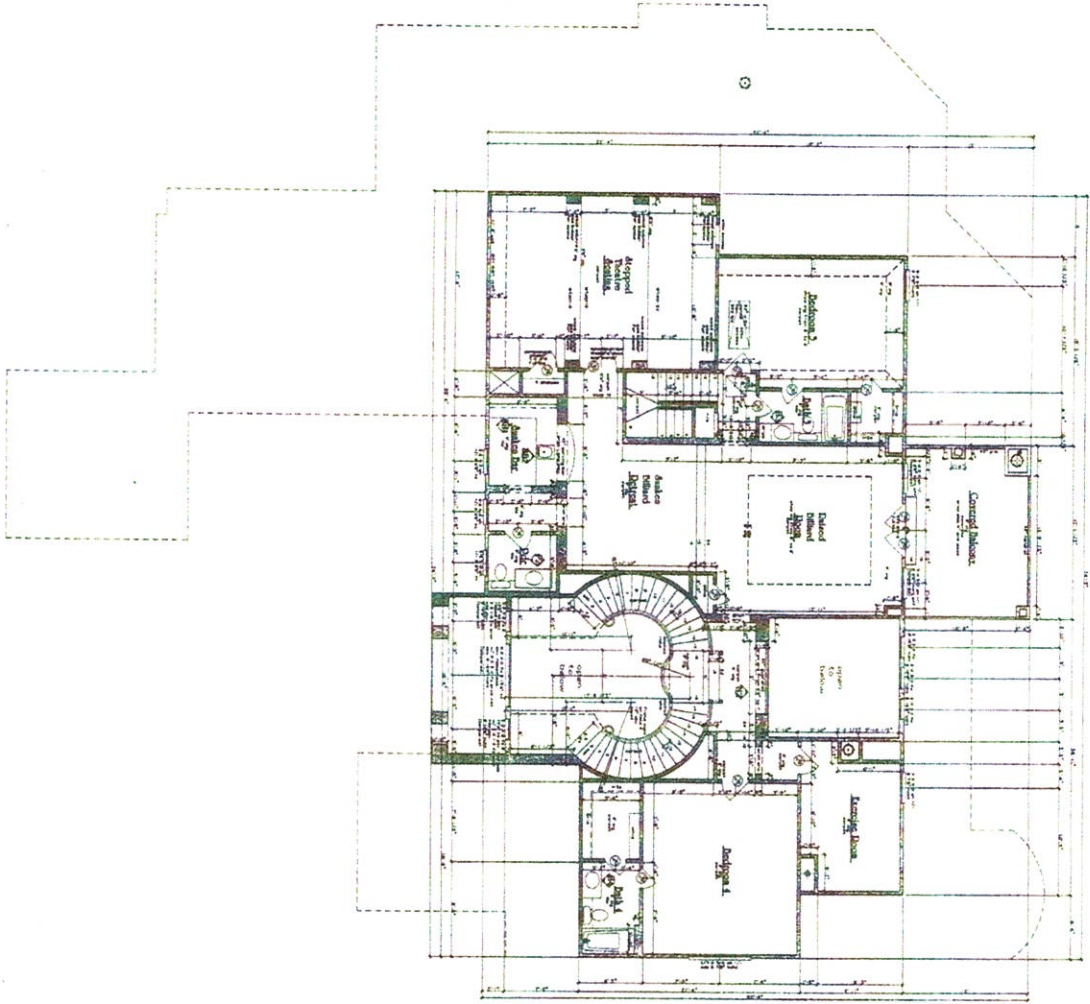
Scale: 1/4" = 1'-0"

Notes:

- ALL WALLS TO BE FINISHED WITH 5/8" GYPSUM BOARD OVER STUDS AND JOISTS.
- ALL CEILING TO BE FINISHED WITH 5/8" GYPSUM BOARD OVER JOISTS.
- ALL FLOORING TO BE INSTALLED OVER 1/2" GYPSUM BOARD OVER CONCRETE SLAB.
- ALL DOORS TO BE 1 1/2" SOLID CORE WITH 6" FLUSH FINISH.
- ALL WINDOWS TO BE 2" EASY OPEN WITH 1/2" GYPSUM BOARD OVER SILLING AND CASING.
- ALL WALLS TO BE PAINTED WITH SEMI-GLOSS ENAMEL.
- ALL CEILING TO BE PAINTED WITH SEMI-GLOSS ENAMEL.
- ALL FLOORING TO BE INSTALLED OVER 1/2" GYPSUM BOARD OVER CONCRETE SLAB.
- ALL DOORS TO BE 1 1/2" SOLID CORE WITH 6" FLUSH FINISH.
- ALL WINDOWS TO BE 2" EASY OPEN WITH 1/2" GYPSUM BOARD OVER SILLING AND CASING.
- ALL WALLS TO BE PAINTED WITH SEMI-GLOSS ENAMEL.
- ALL CEILING TO BE PAINTED WITH SEMI-GLOSS ENAMEL.
- ALL FLOORING TO BE INSTALLED OVER 1/2" GYPSUM BOARD OVER CONCRETE SLAB.

DATE: _____
 DRAWN BY: _____
 CHECKED BY: _____
 TITLE: _____
 PROJECT: _____
 SHEET NO.: _____
 OF _____ SHEETS

SECTION	DATE



FRONTIER
 ARCHITECTS
 1111 14th St. N.E.
 Grand Rapids, MI 49503
 (616) 961-1111
 www.frontierarchitects.com

DESIGNER	FRONTIER
OWNER	
DATE	
SCALE	1/4" = 1'-0"
NO.	3
OF 3 SHEETS	

Frontier Designs

a division of Frontier Homebuilders, Inc.

NO.	3
OF 3 SHEETS	
DATE	
SCALE	1/4" = 1'-0"
NO.	3
OF 3 SHEETS	