

**WOOD**

- Included
- Area 1
- Area 2
- Area 3

*[Handwritten signature]*

**The Ashleigh | Plan 5183 | First Floor**

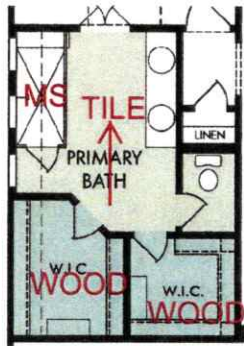
**3,192 sq. ft. | 4 Bed | 3.5 Bath | 3 Car Tandem Garage | 1 Story**

**FLEX LIVING OPTIONS:** Primary Shower, Sliding Door, Deluxe Kitchen, Primary Suite Bay, Utility Room, Fireplace, Guest Suite, Guest Shower

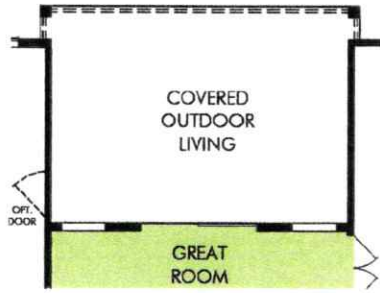
REV 01/19  
Hou 5183-BASE

Any floorplan and/or elevation rendering is an artist's conceptual rendering intended to provide a general overview, but any such rendering does not constitute actual plans and specifications for any home. Renderings and pictures are representative and may depict floorplans, elevations, options, upgrades, landscaping, and other features and amenities that are not included as part of all homes and/or may not be available for all lots and/or in all communities. Rendering may not be drawn to scale. Any provided dimensions are approximate and actual dimensions may vary. Homes may be constructed with a floor plan that is the reverse of the floor plan rendering. Plans are copyrighted and/or otherwise subject to intellectual property rights of Meritage and/or others and cannot be reproduced or copied without Meritage's prior written consent. Plans and specifications, home features, and community information are subject to change, and homes to prior sale, at any time without notice or obligation. Additionally, deviations and variations may exist in any constructed home, including, without limitation: (i) substitution of materials and equipment of substantially equal or better quality; (ii) minor style, lot orientation, and color changes; (iii) minor variances in square footage and in room and space dimensions; and in window, door, utility outlet, and other placement locations; (iv) changes or may be required by any clubs, individual, county or local governmental authority in order to accommodate requested selections and/or options; and (v) value engineering and field changes.

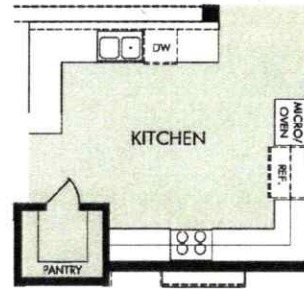




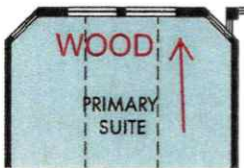
① PRIMARY SHOWER  
BTH0103



② SLIDING DOOR AT GREAT ROOM  
WIN9000



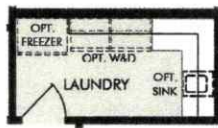
③ DELUXE KITCHEN  
(STUDIO M)



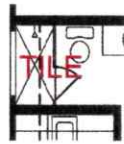
④ PRIMARY SUITE BAY  
BAY0005



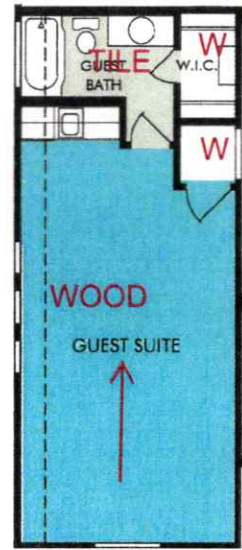
⑥ FIREPLACE AT GREAT ROOM  
FPC0001



⑤ UTILITY ROOM CABINETS  
(STUDIO M)



⑧ GUEST SUITE SHOWER  
PLM0700



⑦ GUEST SUITE  
RMO0300

- Included
- Area 1
- Area 2
- Area 3

**The Ashleigh | Plan 5183 | Options**  
**3,192 sq. ft. | 4 Bed | 3.5 Bath | 3 Car Tandem Garage | 1 Story**

REV 01/19  
Hou 5183-BASE

Any floor plan and/or elevation rendering is an artist's conceptual rendering intended to provide a general overview, but any such rendering does not constitute actual plans and specifications for any home. Renderings and pictures are representative and may depict floor plans, elevations, options, upgrades, landscaping, and other features and amenities that are not included as part of all homes and/or may not be available for all lots and/or in all communities. Renderings may not be drawn to scale. Any provided dimensions are approximate and actual dimensions may vary. Homes may be constructed with a floor plan that is the reverse of the floor plan rendering. Plans are copyright(s) and/or otherwise subject to intellectual property rights of Meritage and/or others and cannot be reproduced or copied without Meritage's prior written consent. Plans and specifications, home features, and community information are subject to change, and homes for prior sale, at any time without notice or obligation. Additionally, deviations and variations may exist in any constructed home, including, without limitation: (i) substitution of materials and equipment of substantially equal or better quality; (ii) minor size, of coloration, and color changes; (iii) minor variances in square footage and in room and space dimensions; and in window, door, utility outlet, and other improvement locations; (iv) changes as may be required by any state, federal, county, or local governmental authority in order to accommodate requested selections and/or options; and (v) value engineering and field changes.