



55.5 ACRE LCR 426
LIMESTONE COUNTY, TEXAS
55.5 +/- ACRES | STOCK POND



55.5 ACRE LCR 426



Attractive 55.5 +/- acres located in Limestone County, 15 minutes south of Mexia. Excellent blend of open and wooded areas on this tract. Fenced and cross-fenced with stock pond near front of property. Land has a fenced out homestead and with a little TLC could be a beautiful weekend place. Several nice homesites surrounded by pastures and large, mature oaks, crape myrtles, and pear trees. Natural gas well-site located near back property line and surrounded by cedar trees. A fenced out hay trap is located along southern boundary line. AG EXEMPT. Electric (Navasota Co-op) available along the road. Call to schedule your showing!



Markham Realty
Selling Quality Texas Properties Since 1970
contact@markhamrealty.com
936-295-5989 | markhamrealty.com



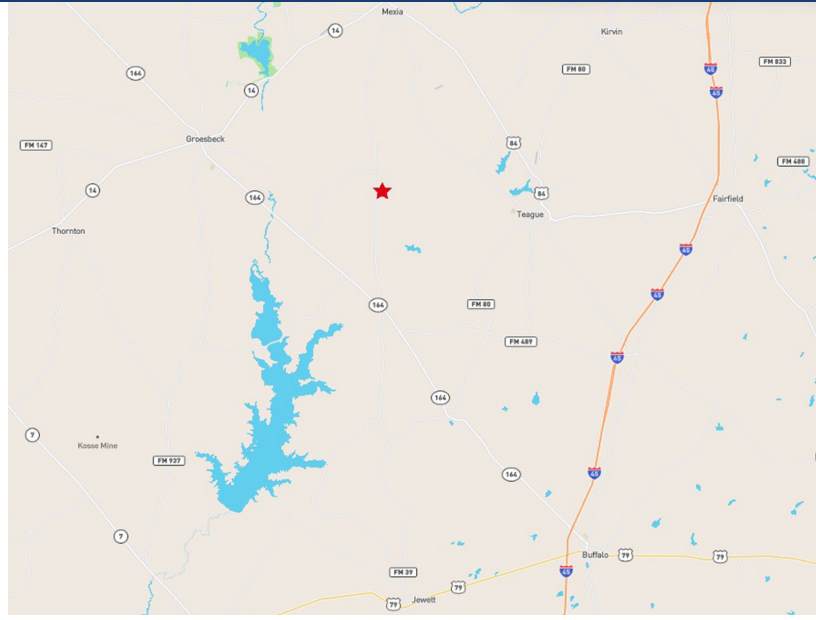
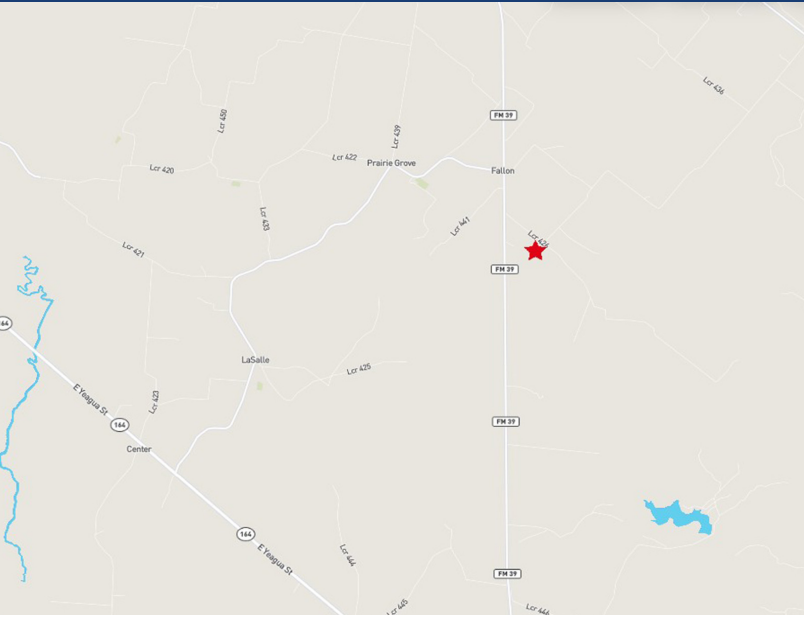
Scan here for additional information & photos.



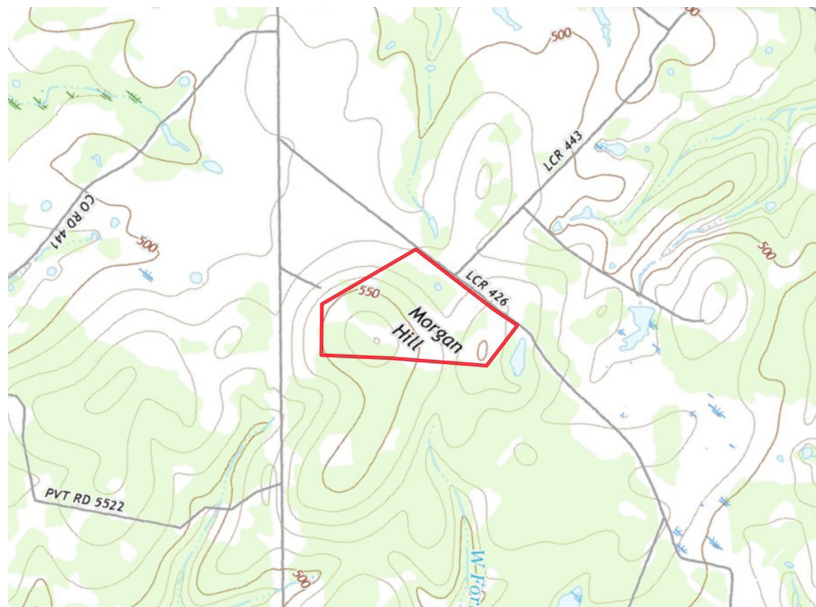
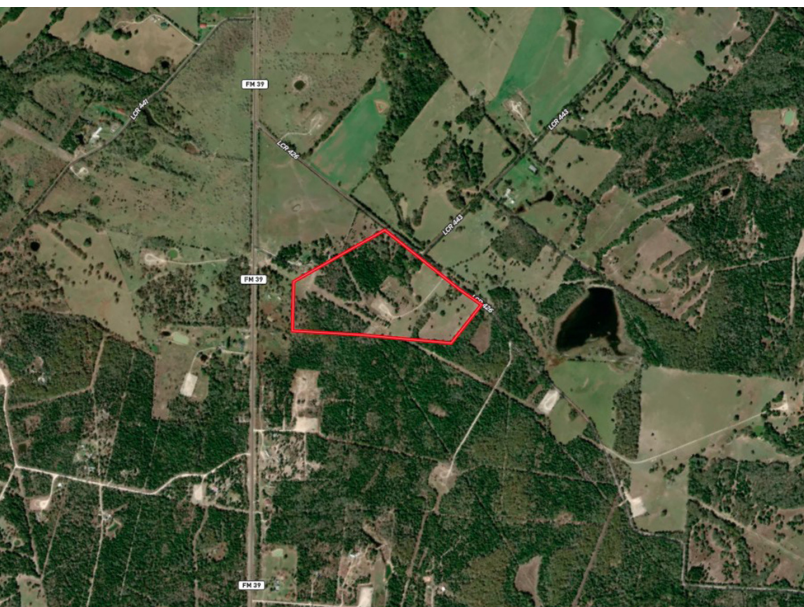
Information furnished is from sources deemed reliable, but is not guaranteed by Markham Realty, Inc. The offerings are subject to change in price, errors, omissions, prior sales, or withdrawal without notice. Square footage, acreage size and lot dimensions are approximate. All persons and firms named in this brochure are licensed brokers or salespersons. Markham Realty, Inc. will co-broker with any licensed Broker if Broker and/or agent accompanies his or her prospective buyer from the first (1st) showing forward.

55.5 ACRE LCR 426

LIMESTONE COUNTY, TEXAS



From Mexia, South FM 39, Left LCR 426, Property on the Right. <https://maps.app.goo.gl/LZKk6Td28Yc1HcGR7>



Markham Realty
Selling Quality Texas Properties Since 1970
contact@markhamrealty.com
936-295-5989 | markhamrealty.com



Scan here for additional information & photos.



Information furnished is from sources deemed reliable, but is not guaranteed by Markham Realty, Inc. The offerings are subject to change in price, errors, omissions, prior sales, or withdrawal without notice. Square footage, acreage size and lot dimensions are approximate. All persons and firms named in this brochure are licensed brokers or salespersons. Markham Realty, Inc. will co-broker with any licensed Broker if Broker and/or agent accompanies his or her prospective buyer from the first (1st) showing forward.