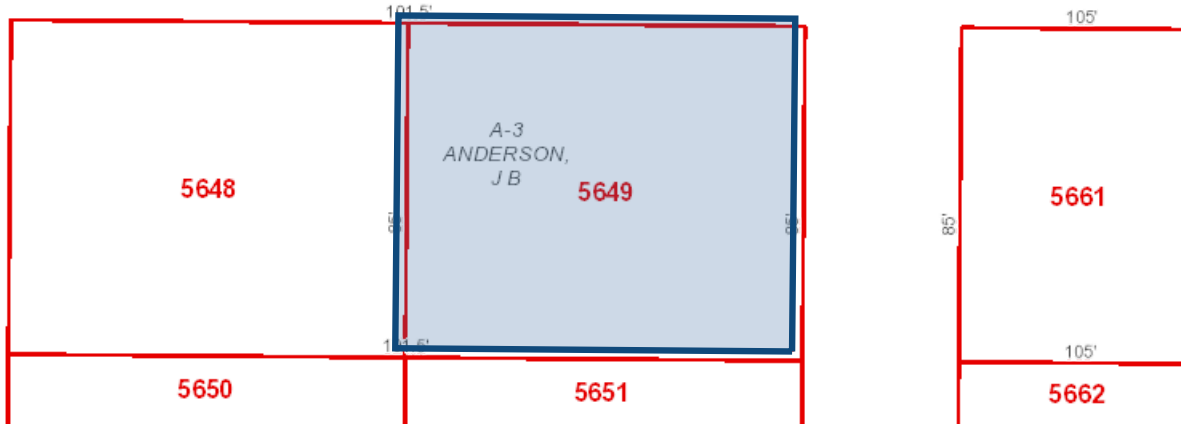


Map



Property Details

Account		
Property ID:	5649	Geographic ID: 2075-0005-0002-01
Type:	Real	Zoning:
Property Use:		Condo:
Location		
Situs Address:	400 S E 3RD TX	
Map ID:	AREA "A"	Mapsco:
Legal Description:	G W MORRIS, BLOCK 5, LOT 2, ACRES .2048	
Abstract/Subdivision:	2075 - G W MORRIS	
Neighborhood:	MKTADJCC	
Owner		
Owner ID:	172651	
Name:	BLANN JASON & DONNA	
Agent:		
Mailing Address:	400 SE 3RD ST COOPER, TX 75432	
% Ownership:	100.0%	
Exemptions:	DP - DISABILITY HS - HOMESTEAD For privacy reasons not all exemptions are shown online.	

Property Values

Improvement Homesite Value:	\$58,690 (+)
Improvement Non-Homesite Value:	\$0 (+)

Land Homesite Value:	\$8,930 (+)
Land Non-Homesite Value:	\$0 (+)
Agricultural Market Valuation:	\$0 (+)
Market Value:	\$67,620 (=)
Agricultural Value Loss: ?	\$0 (-)
Appraised Value:	\$67,620 (=)
Homestead Cap Loss: ?	\$641 (-)
Assessed Value:	\$66,979
Ag Use Value:	\$0

VALUES DISPLAYED ARE 2023 PRELIMINARY VALUES AND ARE SUBJECT TO CHANGE PRIOR TO CERTIFICATION.

Information provided for research purposes only. Legal descriptions and acreage amounts are for appraisal district use only and should be verified prior to using for legal purpose and or documents. Please contact the Appraisal District to verify all information for accuracy.

Property Taxing Jurisdiction

Owner: BLANN JASON & DONNA %**Ownership:** 100.0%

Entity	Description	Tax Rate	Market Value	Taxable Value
CAD	Central Appraisal District	0.000000	\$67,620	\$66,979
CC	CITY OF COOPER	0.688062	\$67,620	\$66,979
CS	COOPER I S D	0.917500	\$67,620	\$0
DC	DELTA COUNTY	0.430338	\$67,620	\$66,979
DE	DELTA CO EMSD #1	0.045000	\$67,620	\$66,979
DM	DELTA MUD	0.097460	\$67,620	\$66,979
RB	DELTA R&B	0.092257	\$67,620	\$63,979

Total Tax Rate: 2.270617

Property Improvement - Building

Type: RESIDENTIAL **State Code:** A1 **Living Area:** 1,698.00sqft **Value:** \$58,690

Type	Description	Class CD	Exterior Wall	Year Built	SQFT
RES	RES	FR3	VY	1950	1,292.00
RES	RES	CP		1900	273.00
RES	RES	CP		1900	133.00
SHED	SHED	SW3		0	468.00

Property Land

Type	Description	Acreage	Sqft	Eff Front	Eff Depth	Market Value	Prod. Value
2075	G W MORRIS	0.2048	8,925.00	0.00	0.00	\$8,930	\$0

Property Roll Value History

Year	Improvements	Land Market	Ag Valuation	Appraised	HS Cap Loss	Assessed
2024	N/A	N/A	N/A	N/A	N/A	N/A
2023	\$58,690	\$8,930	\$0	\$67,620	\$641	\$66,979
2022	\$56,430	\$4,460	\$0	\$60,890	\$0	\$60,890
2021	\$39,920	\$3,120	\$0	\$43,040	\$3,344	\$39,696
2020	\$34,770	\$2,230	\$0	\$37,000	\$913	\$36,087
2019	\$34,770	\$2,230	\$0	\$37,000	\$4,194	\$32,806
2018	\$29,990	\$2,230	\$0	\$32,220	\$2,396	\$29,824
2017	\$27,570	\$2,230	\$0	\$29,800	\$2,687	\$27,113
2016	\$24,660	\$2,230	\$0	\$26,890	\$2,242	\$24,648
2015	\$24,690	\$2,230	\$0	\$26,920	\$4,513	\$22,407
2014	\$18,140	\$2,230	\$0	\$20,370	\$0	\$20,370
2013	\$18,140	\$2,230	\$0	\$20,370	\$0	\$20,370

Property Deed History

Deed Date	Type	Description	Grantor	Grantee	Volume	Page	Number
7/8/2022	WD	WARRANTY DEED	SEDDIGHI HOSSEIN	BLANN JASON & DONNA	394	428	22-1006
9/16/2021	WD	WARRANTY DEED	VICK JERRY W	SEDDIGHI HOSSEIN	386	702	21-1284
9/16/2021	H	HEIRSHIP	VICK JERRY W ET UX	VICK JERRY W	386	697	21-1283
7/10/2006	WDVL	WARRANTY DEED WITH VENDORS LIEN	BAZAZZODEH REZA	VICK JERRY W ET UX	283	169	
1/30/1996	OT	OTHER		BAZAZZODEH REZA	214	800	

Estimated Tax Due

****ATTENTION****

Indicated amount may not reflect delinquent tax due beyond a 5-year history. Partial payments or contract payments may not be reflected. Quarter payments that are made according to Section 31.031 of the Texas Property Tax Code are not considered delinquent.

****PRIOR TO MAKING FULL OR PARTIAL PAYMENTS PLEASE CONTACT OUR OFFICE FOR A CURRENT AMOUNT DUE****

****WE CANNOT GUARANTEE THE ACCURACY OF THE AMOUNT DUE LISTED BELOW****

If Paid:



Year	Taxing Jurisdiction	Taxable Value	Base Tax	Base Taxes Paid	Base Tax Due	Discount/Penalty & Interest	Attorney Fees	Amount Due
2023	CITY OF COOPER	\$66,979	\$460.85	\$231.33	\$229.52	\$16.06	\$0.00	\$245.58
2023	DELTA COUNTY	\$66,979	\$288.24	\$144.68	\$143.56	\$10.05	\$0.00	\$153.61
2023	DELTA CO EMSD #1	\$66,979	\$30.14	\$15.13	\$15.01	\$1.05	\$0.00	\$16.06
2023	DELTA MUD	\$66,979	\$65.28	\$32.77	\$32.51	\$2.28	\$0.00	\$34.79
2023	DELTA R&B	\$63,979	\$59.03	\$29.63	\$29.40	\$2.05	\$0.00	\$31.45
	2023 Total:		\$903.54	\$453.54	\$450.00	\$31.49	\$0.00	\$481.49
2022	CITY OF COOPER	\$60,890	\$440.79	\$440.79	\$0.00	\$0.00	\$0.00	\$0.00
2022	COOPER I S D	\$41,466	\$457.33	\$457.33	\$0.00	\$0.00	\$0.00	\$0.00
2022	DELTA COUNTY	\$60,890	\$303.35	\$303.35	\$0.00	\$0.00	\$0.00	\$0.00
2022	DELTA CO EMSD #1	\$60,890	\$33.49	\$33.49	\$0.00	\$0.00	\$0.00	\$0.00
2022	DELTA MUD	\$60,890	\$68.22	\$68.22	\$0.00	\$0.00	\$0.00	\$0.00
2022	DELTA R&B	\$59,435	\$63.32	\$63.32	\$0.00	\$0.00	\$0.00	\$0.00
	2022 Total:		\$1,366.50	\$1,366.50	\$0.00	\$0.00	\$0.00	\$0.00
2021	CITY OF COOPER	\$0	\$317.51	\$317.51	\$0.00	\$0.00	\$0.00	\$0.00
2021	DELTA COUNTY	\$0	\$59.51	\$59.51	\$0.00	\$0.00	\$0.00	\$0.00
2021	DELTA CO EMSD #1	\$0	\$24.38	\$24.38	\$0.00	\$0.00	\$0.00	\$0.00

2021	DELTA MUD	\$0	\$49.83	\$49.83	\$0.00	\$0.00	\$0.00	\$0.00
2021	DELTA R&B	\$0	\$14.49	\$14.49	\$0.00	\$0.00	\$0.00	\$0.00
	2021 Total:		\$465.72	\$465.72	\$0.00	\$0.00	\$0.00	\$0.00
2020	CITY OF COOPER	\$33,087	\$288.28	\$288.28	\$0.00	\$0.00	\$0.00	\$0.00
2020	DELTA COUNTY	\$26,087	\$59.51	\$59.51	\$0.00	\$0.00	\$0.00	\$0.00
2020	DELTA CO EMSD #1	\$36,087	\$24.52	\$24.52	\$0.00	\$0.00	\$0.00	\$0.00
2020	DELTA MUD	\$36,087	\$46.97	\$46.97	\$0.00	\$0.00	\$0.00	\$0.00
2020	DELTA R&B	\$26,087	\$14.49	\$14.49	\$0.00	\$0.00	\$0.00	\$0.00
	2020 Total:		\$433.77	\$433.77	\$0.00	\$0.00	\$0.00	\$0.00
2019	CITY OF COOPER	\$29,806	\$273.50	\$273.50	\$0.00	\$0.00	\$0.00	\$0.00
2019	DELTA COUNTY	\$22,806	\$59.51	\$59.51	\$0.00	\$0.00	\$0.00	\$0.00
2019	DELTA CO EMSD #1	\$32,806	\$22.96	\$22.96	\$0.00	\$0.00	\$0.00	\$0.00
2019	DELTA MUD	\$32,806	\$43.19	\$43.19	\$0.00	\$0.00	\$0.00	\$0.00
2019	DELTA R&B	\$22,806	\$14.49	\$14.49	\$0.00	\$0.00	\$0.00	\$0.00
	2019 Total:		\$413.65	\$413.65	\$0.00	\$0.00	\$0.00	\$0.00
2018	CITY OF COOPER	\$26,824	\$251.40	\$251.40	\$0.00	\$0.00	\$0.00	\$0.00
2018	DELTA COUNTY	\$19,824	\$59.51	\$59.51	\$0.00	\$0.00	\$0.00	\$0.00
2018	DELTA CO EMSD #1	\$29,824	\$13.15	\$13.15	\$0.00	\$0.00	\$0.00	\$0.00
2018	DELTA MUD	\$29,824	\$40.01	\$40.01	\$0.00	\$0.00	\$0.00	\$0.00
2018	DELTA R&B	\$19,824	\$14.49	\$14.49	\$0.00	\$0.00	\$0.00	\$0.00
	2018 Total:		\$378.56	\$378.56	\$0.00	\$0.00	\$0.00	\$0.00
2017	CITY OF COOPER	\$24,113	\$261.29	\$261.29	\$0.00	\$0.00	\$0.00	\$0.00
2017	DELTA COUNTY	\$17,113	\$59.51	\$59.51	\$0.00	\$0.00	\$0.00	\$0.00
2017	DELTA CO EMSD #1	\$27,113	\$13.13	\$13.13	\$0.00	\$0.00	\$0.00	\$0.00
2017	DELTA MUD	\$27,113	\$37.25	\$37.25	\$0.00	\$0.00	\$0.00	\$0.00
2017	DELTA R&B	\$17,113	\$14.49	\$14.49	\$0.00	\$0.00	\$0.00	\$0.00
	2017 Total:		\$385.67	\$385.67	\$0.00	\$0.00	\$0.00	\$0.00

2016	CITY OF COOPER	\$21,648	\$234.58	\$234.58	\$0.00	\$0.00	\$0.00	\$0.00
2016	DELTA COUNTY	\$14,648	\$59.51	\$59.51	\$0.00	\$0.00	\$0.00	\$0.00
2016	DELTA CO EMSD #1	\$24,648	\$11.93	\$11.93	\$0.00	\$0.00	\$0.00	\$0.00
2016	DELTA MUD	\$24,648	\$33.86	\$33.86	\$0.00	\$0.00	\$0.00	\$0.00
2016	DELTA R&B	\$14,648	\$14.49	\$14.49	\$0.00	\$0.00	\$0.00	\$0.00
	2016 Total:		\$354.37	\$354.37	\$0.00	\$0.00	\$0.00	\$0.00
2015	CITY OF COOPER	\$19,407	\$210.30	\$210.30	\$0.00	\$0.00	\$0.00	\$0.00
2015	DELTA COUNTY	\$12,407	\$59.51	\$59.51	\$0.00	\$0.00	\$0.00	\$0.00
2015	DELTA CO EMSD #1	\$22,407	\$11.20	\$11.20	\$0.00	\$0.00	\$0.00	\$0.00
2015	DELTA MUD	\$22,407	\$30.79	\$30.79	\$0.00	\$0.00	\$0.00	\$0.00
2015	DELTA R&B	\$12,407	\$14.49	\$14.49	\$0.00	\$0.00	\$0.00	\$0.00
	2015 Total:		\$326.29	\$326.29	\$0.00	\$0.00	\$0.00	\$0.00
2014	CITY OF COOPER	\$17,370	\$182.70	\$182.70	\$0.00	\$0.00	\$0.00	\$0.00
2014	DELTA COUNTY	\$10,370	\$59.51	\$59.51	\$0.00	\$0.00	\$0.00	\$0.00
2014	DELTA CO EMSD #1	\$20,370	\$6.11	\$6.11	\$0.00	\$0.00	\$0.00	\$0.00
2014	DELTA MUD	\$20,370	\$27.99	\$27.99	\$0.00	\$0.00	\$0.00	\$0.00
2014	DELTA R&B	\$10,370	\$14.49	\$14.49	\$0.00	\$0.00	\$0.00	\$0.00
	2014 Total:		\$290.80	\$290.80	\$0.00	\$0.00	\$0.00	\$0.00
2013	CITY OF COOPER	\$17,370	\$180.28	\$180.28	\$0.00	\$0.00	\$0.00	\$0.00
2013	DELTA COUNTY	\$10,370	\$59.51	\$59.51	\$0.00	\$0.00	\$0.00	\$0.00
2013	DELTA CO EMSD #1	\$20,370	\$6.11	\$6.11	\$0.00	\$0.00	\$0.00	\$0.00
2013	DELTA MUD	\$20,370	\$27.99	\$27.99	\$0.00	\$0.00	\$0.00	\$0.00
2013	DELTA R&B	\$10,370	\$14.49	\$14.49	\$0.00	\$0.00	\$0.00	\$0.00
	2013 Total:		\$288.38	\$288.38	\$0.00	\$0.00	\$0.00	\$0.00