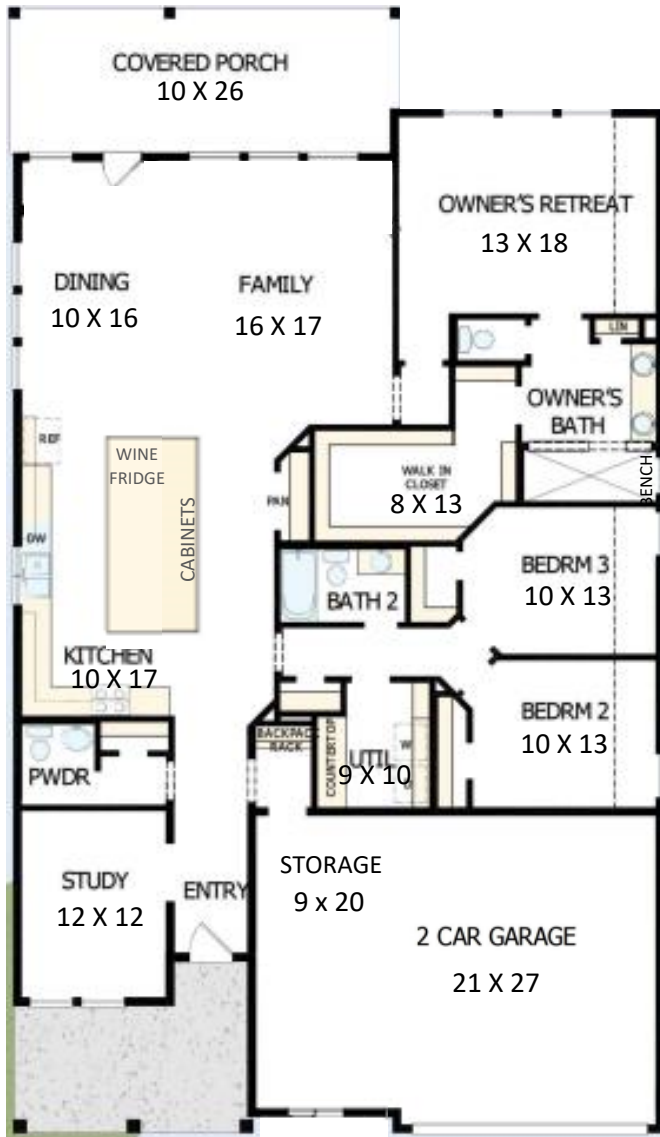


HOME SWEET *Quick Move-in* HOME

EXPLORE OUR QUICK MOVE-IN HOME OF THE MONTH!
29630 CEDAR ELM WAY



THE HENNESSEY 'E' 2271 SQ FT. / 1 STORY

3-Bedrooms, 2-1/2 Bath. Study. Huge Island w/wine fridge & extra cabinets. Oversized Dining. Super Shower w/bench @ Master Bath. Large walk-in closet. Enlarged Covered Patio. 2-1/2 Car Garage. April completion.

FOR MORE INFORMATION, CONTACT:
Beverly Bradley, Sr. Sales Consultant/Owner
David Weekley Homes
832-687-0172



See a David Weekley Homes Sales Consultant for details. Prices, plans, dimensions, features, specifications, materials, and availability of homes or communities are subject to change without notice or obligation. Illustrations are artist's depictions only and may differ from completed improvements. Copyright ©2018 David Weekley Homes - All Rights Reserved. 290837 Phoenix, AZ (PHXW102034)



Design Selections

B-K11.7.5

KITCHEN



CABINETS
KENT MOORE HARVARD
MAIN – EXTRA WHITE
ISLAND – MIDNIGHT MYSTIQUE

BACKSPLASH
EM MIZU WHITE
ECLIPSE 4X4 WHITE
GROUT

COUNTERTOP
QUARTZ HELIX
STRAIGHT EDGE

FLOORING
PEMBROKE
WILD DUNES
SPC



**ISLAND
PENDANTS**
KICHLER EVERLY
BLACK 42047BK



FAUCET
MOEN SLEEK
MATTE BLACK

OWNER'S BATH



CABINETS
KENT MOORE
HARVARD
EXTRA WHITE

COUNTERTOP
QUARTZ BLANCO
MAPLE STRAIGHT
EDGE

**FLOOR AND
SHOWER**
EM REALM II
ASSEMBLY 12x24
STRAIGHT WARM
GREY GROUT



PLUMBING
MOEN GIBSON
MATTE BLACK

SECONDARY BATHS



CABINETS
KENT MOORE
HARVARD
EXTRA WHITE

COUNTERTOP
QUARTZ BLANCO
MAPLE STRAIGHT
EDGE

**FLOOR AND
SHOWER**
EM REALM II
ASSEMBLY 12x24
STRAIGHT WARM
GREY GROUT

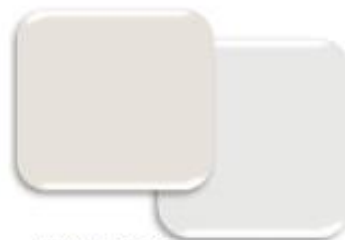
WHOLE HOME



CARPET
ALBERT PLACE FOG



FLOORING
PEMBROKE
WILD DUNES SPC



WALL COLOR
HERON PLUME
SW6070

TRIM COLOR
SNOWBOUND
SW7004



LIGHTING
KICHLER CROSSBY
BLACK



HARDWARE
KWIKSET BRETON LEVER BLACK