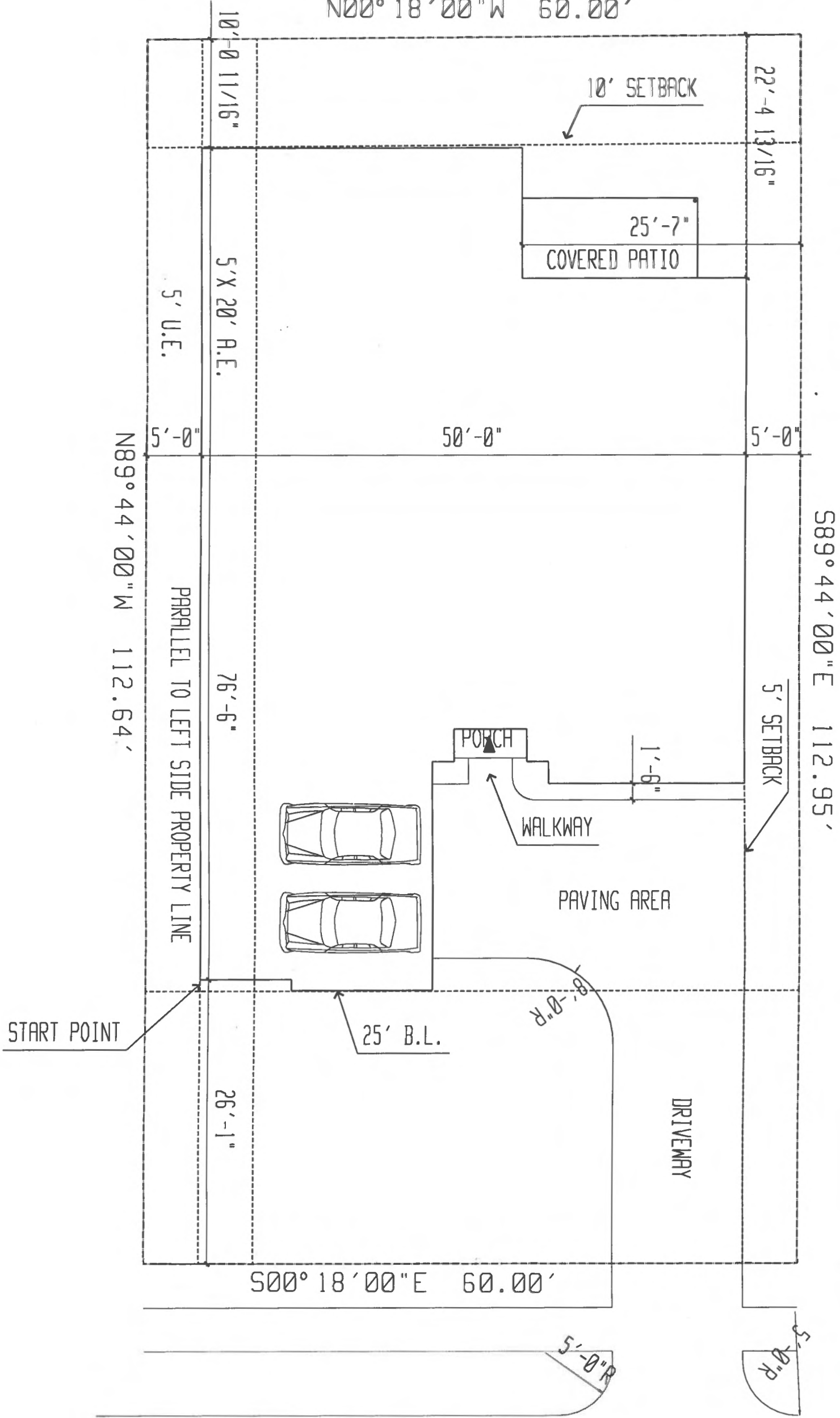


NORTH



N00° 18' 00" W 60.00'



S00° 18' 00" E 60.00'

3606 LAS PALMAS

SITE PLAN

ORIGINAL DATE, <b>Jul 2, 02</b>	REV1:
REVISION DATE:	REV2:
DRAWN:	REV3:
SCALE:	REV4:
1" = 10'-0"	REV5:
	REV6:
	REV7:

SHEET  
R0.1  
OF  
SHEETS



