

PALERMO

PLAN 388 • 3295 SQ. FT.

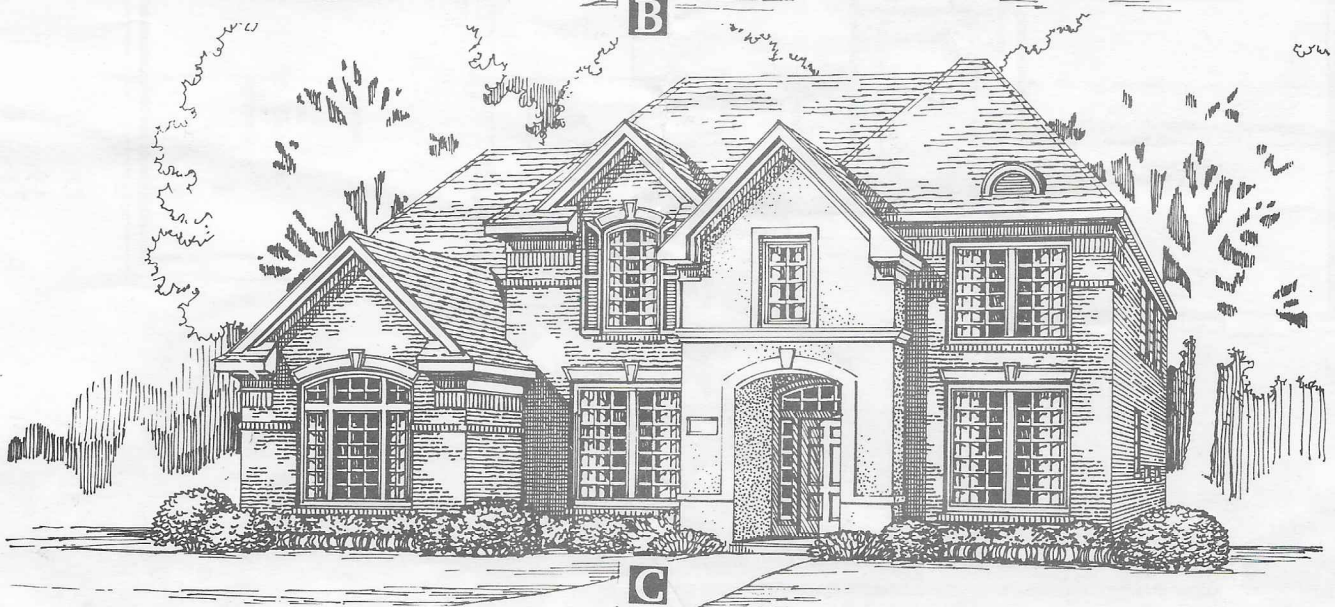
VILLAGE BUILDERS



A

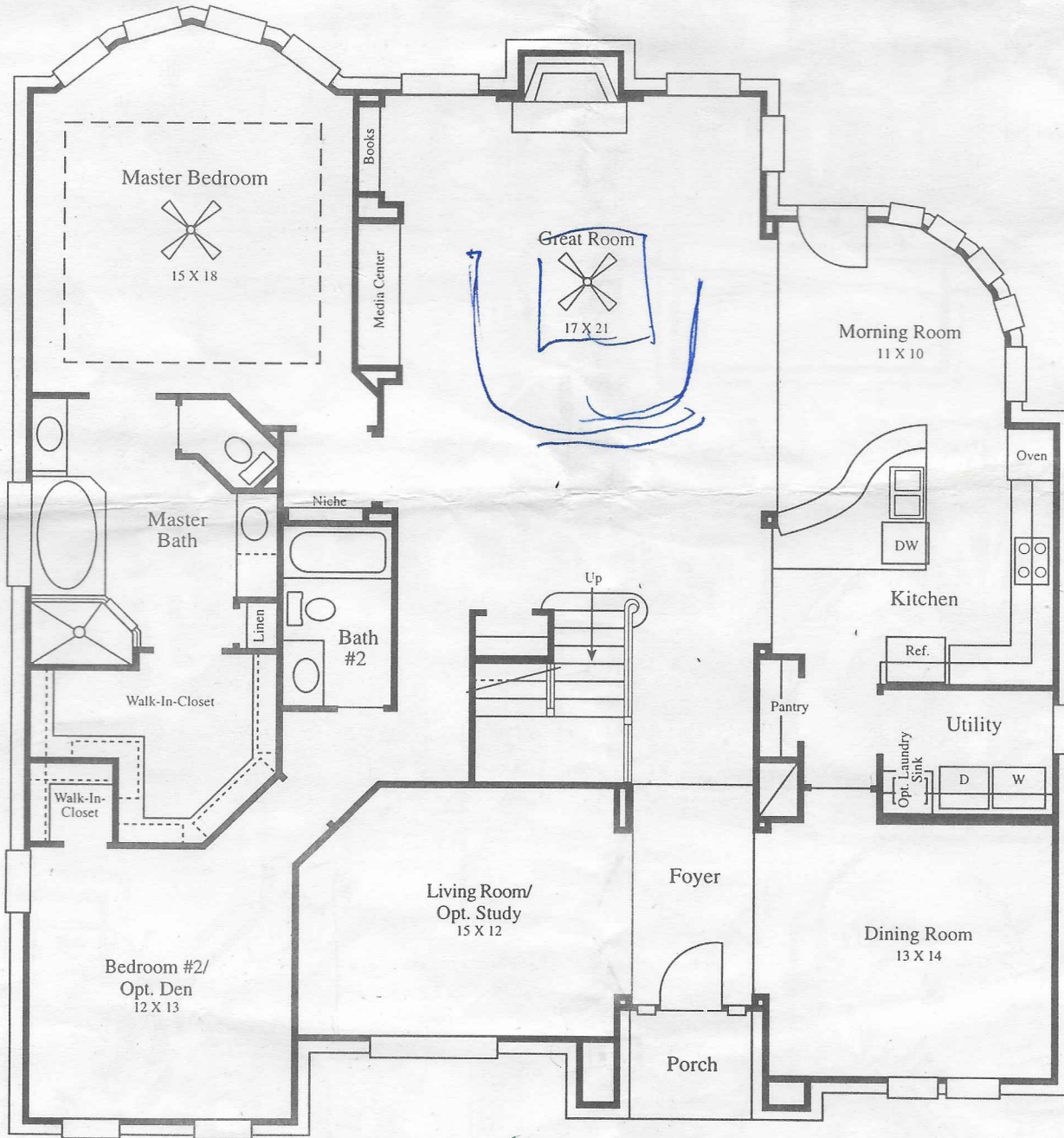


B



C

- Two bedrooms up and two bedrooms down make this home ideal for families with a small infant, live-in nanny, maid or relative. An optional 5th bedroom with bath is also available upstairs for growing families.
- The second downstairs bedroom offers great flexibility, as it can be separated from the master or accessed from the same hall. One option uses the room as a den allowing the master closet to increase in size and the second full bath to down-size to a powder.
- The dramatic Great Room includes a sloped ceiling, back-vent fireplace with decorative windows, plus a built-in media center and bookcases.
- The large, open kitchen features a piano-shaped island, spacious pantry and dramatic curved morning room.



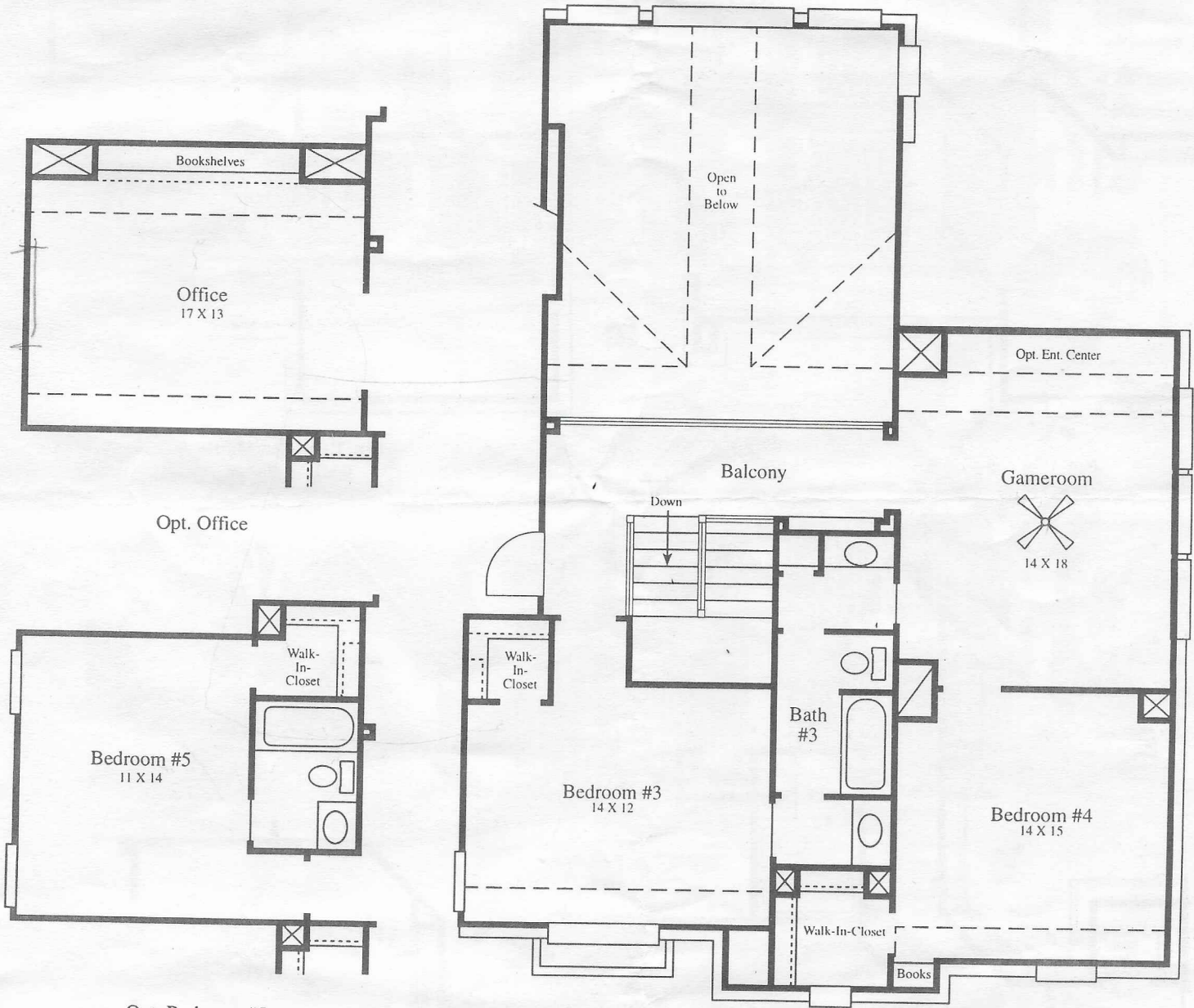
First Floor



Window placement, roof line and porches may vary by elevation. Square footage and room dimensions are approximate. Variances in square footage may occur in different elevations or when different exterior materials are used. Plans, specifications and special features are subject to change without notice.



- The master suite is highlighted by a coffered ceiling, bowed-bay sitting area and a generous bath with an over-sized (and expandable) walk-in closet and split his and hers vanities.
- Upstairs, both bedrooms feature walk-in closets. The spacious game room is isolated from downstairs for minimal noise disruptions. An optional home office is also available upstairs.



Opt. Bedroom #5

Second Floor

