

# HENDLEY RESIDENCE PATTISON, TEXAS



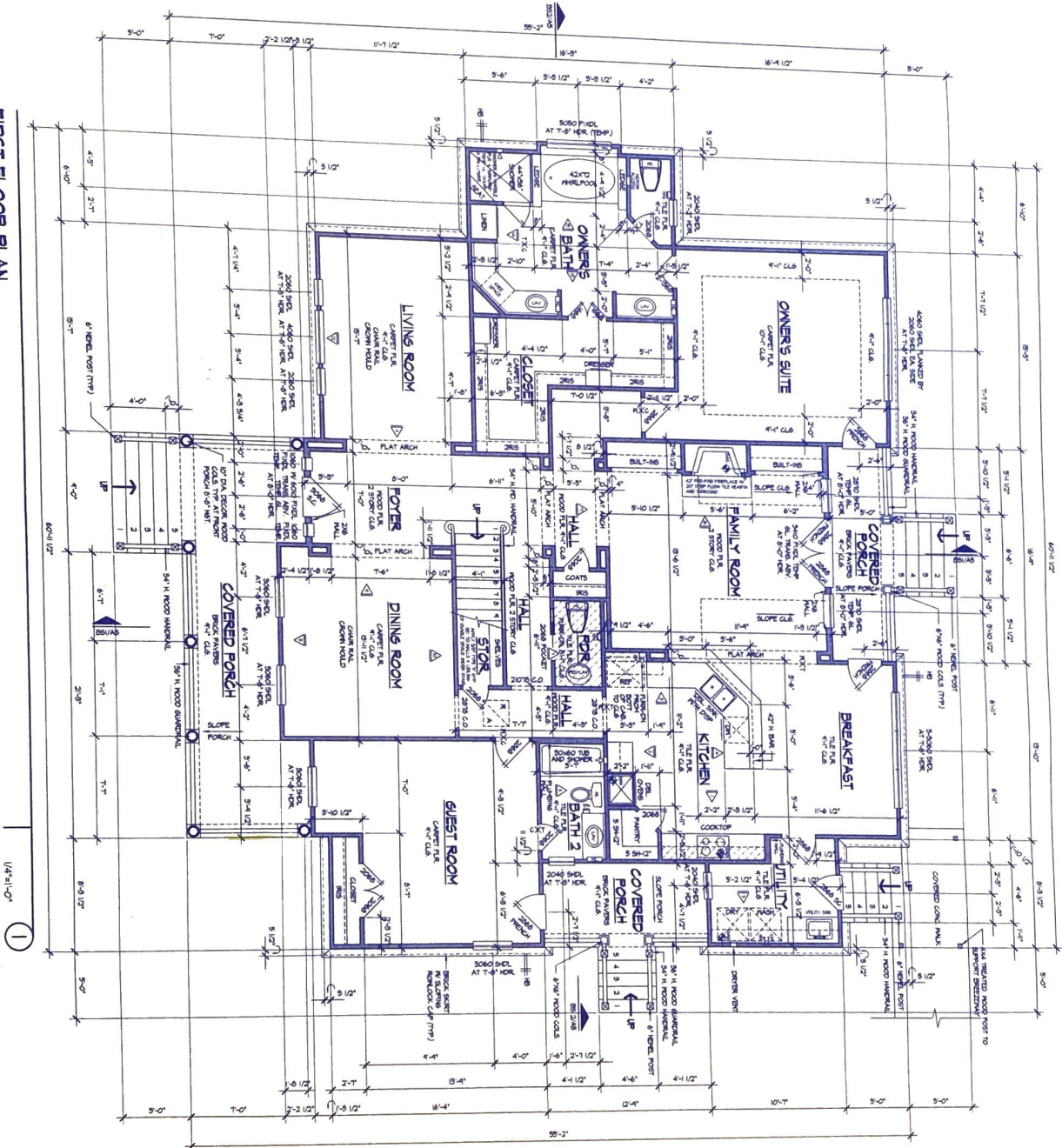
THE  
CLERKLEY  
GROUP INC.

ARCHITECTURE • PLANNING  
16225 Park Ten Place, Suite 830  
Houston, Texas 77084-5155

©COPYRIGHT 1996 THE CLERKLEY GROUP INC.  
ALL RIGHTS RESERVED

© THE CLERKLEY GROUP INC. These plans are copyrighted and are subject to copyright protection under the provisions of Section 103 of the Copyright Act of 1976, as amended December 1, 1980. Copyright Act of 1976, as amended December 1, 1980. All rights reserved. No part of these plans may be reproduced, stored in a retrieval system, or transmitted in any form or by any means, electronic, mechanical, photocopying, recording, or by any information storage and retrieval system, without the prior written permission of The Clerkley Group, Inc. All other reproductions, whether partial or complete, are prohibited. No part of these plans may be reproduced, stored in a retrieval system, or transmitted in any form or by any means, electronic, mechanical, photocopying, recording, or by any information storage and retrieval system, without the prior written permission of The Clerkley Group, Inc. All other reproductions, whether partial or complete, are prohibited.

FIRST FLOOR PLAN



SQUARE FOOTAGES	
FIRST FLOOR	2525
SECOND FLOOR	640
TOTAL LIVING	3040
PORCHES	410
PATIO	40
STORAGE	40
MISC. AREAS	40
TOTAL SLAB	3590

1/4"=1'-0"

A-2

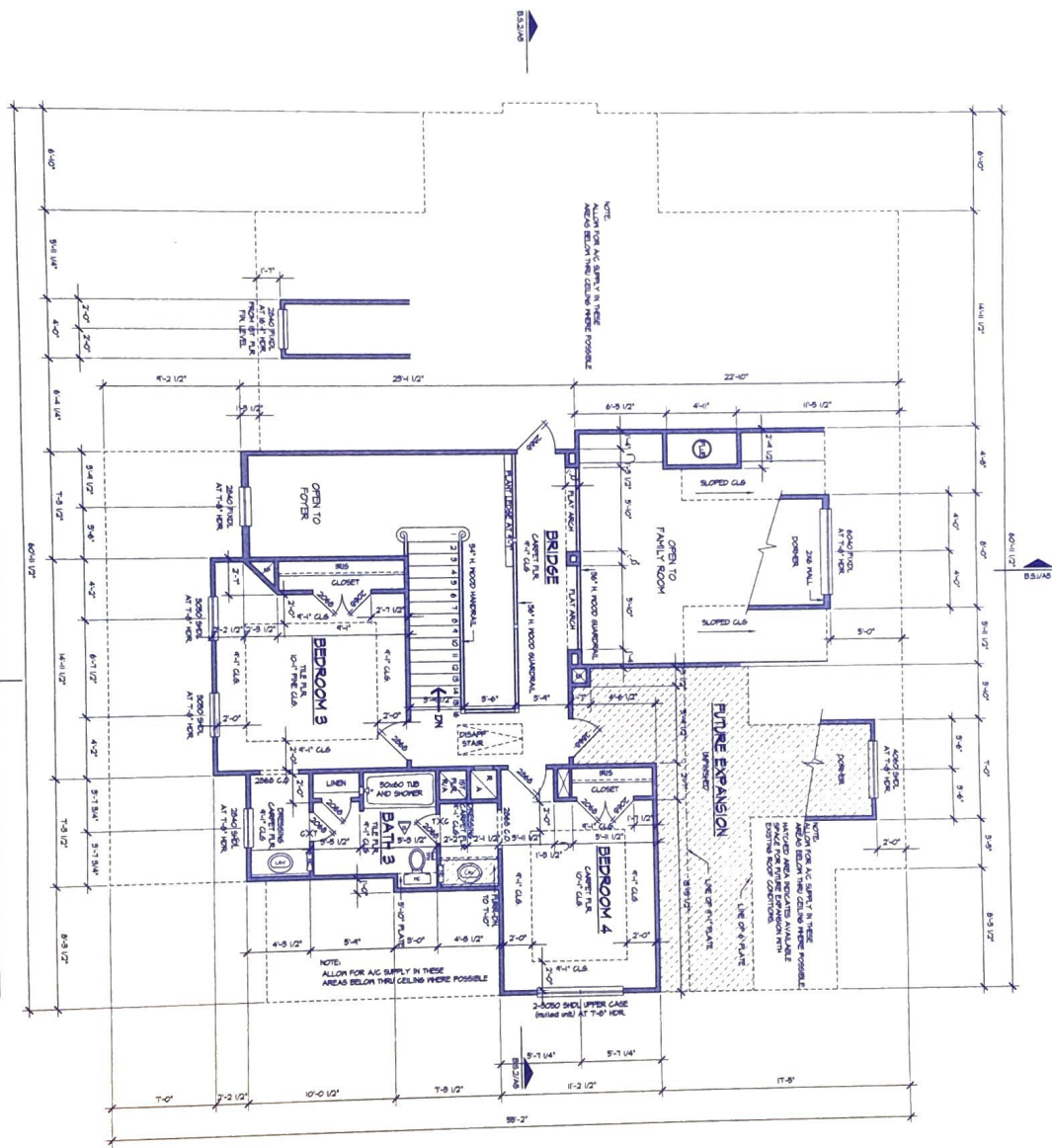
THE CLERKLEY GROUP INC.  
 DEC 18 1998

ARCHITECTURE • PLANNING  
 16225 Park Ten Place, Suite 830  
 Houston, Texas 77084-5155  
 © COPYRIGHT 1998 THE CLERKLEY GROUP INC.  
 ALL RIGHTS RESERVED

PROJECT:  
 HENDLEY RESIDENCE  
 FIRST FLOOR PLAN

PROJ. DATE: 10/29/98  
 PROJECT NO.: HEN9006  
 DRAWN BY: CF  
 CHECKED BY:  
 REVISION:  
 REVISION:

SECOND FLOOR PLAN



1/4" = 1'-0"

THE CLERKLEY GROUP INC.  
 ARCHITECTURE • PLANNING  
 16225 Park Ten Place, Suite 830  
 Houston, Texas 77084-5155  
 © COPYRIGHT 1996 THE CLERKLEY GROUP INC.  
 ALL RIGHTS RESERVED

PROJECT:  
 HENDLEY RESIDENCE  
 SECOND FLOOR PLAN

PROJ. DATE:	10/22/96
PROJECT NO.:	HEN-9606
DRAWN BY:	CF
CHECKED BY:	
REVISION:	
REVISION:	