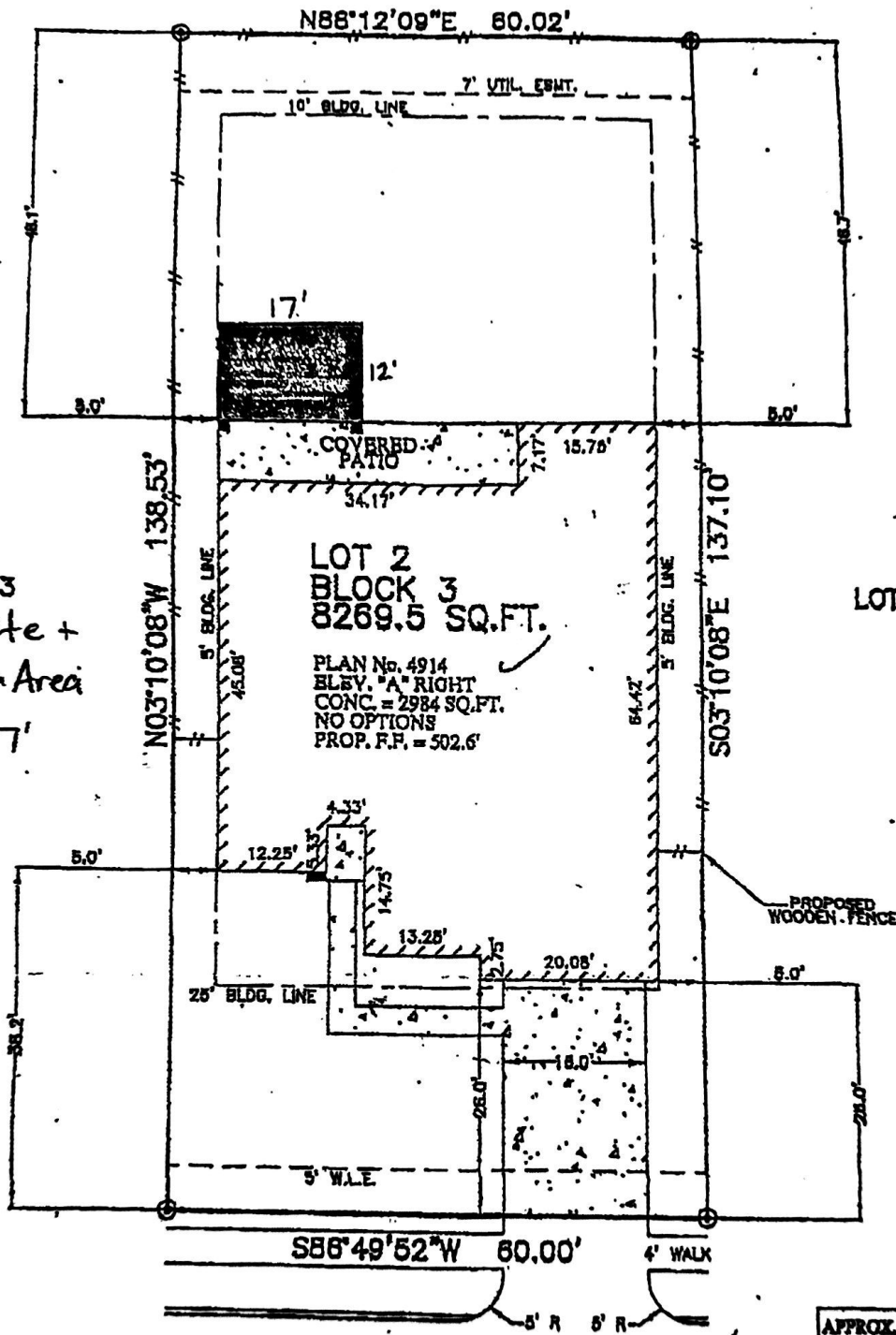


RESIDUE OF CALLED 8.78 ACRES
 F.R.E. NO. 20080109732 K.C.O.P.R.R.P.



LOT 2
 BLOCK 3
 8269.5 SQ.FT.
 PLAN No. 4914
 ELEV. "A" RIGHT
 CONC. = 2984 SQ.FT.
 NO OPTIONS
 PROP. F.H. = 502.6'

LOT 3
 Concrete +
 Pergola Area
 12' x 17'

LOT 1

15410 MONTREAL DRIVE
 (50' R.O.W.)
 28' CONCRETE PAVEMENT

PRELIMINARY ONLY

PLOT PLAN
 SCALE: 1 = 20'

APPROX. LOT COVERAGE 42.20%	
FENCE (LIN. FT.)	2513 LB.
HOUSE AREA	2983.9 SQ. FT.
FRONT SOD:	148 SQ. YD.
BACK SOD:	363 SQ. YD.
LEFT SOD:	8 SQ. YD.
RIGHT SOD:	8 SQ. YD.
R.O.W. SOD:	36 SQ. YD.
TOTAL SOD:	563 SQ. YD.
A/C PAD	16 SQ. FT.
PRIVATE WALK	74 SQ. FT.
PUBLIC WALK	176 SQ. FT.
DRIVEWAY	416 SQ. FT.
IN-TURN	196 SQ. FT.
TOTAL PAVING:	878 SQ. FT.

NOTES:
 1. ALL BEARINGS SHOWN HEREON ARE BASED ON THE RECORDED PLAT.
 2. THIS PLOT PLAN WAS PREPARED WITHOUT BENEFIT OF A TITLE REPORT. THERE MAY BE EASEMENTS, BUILDING LINES & OTHER MATTERS OF RECORD NOT SHOWN HEREON. SURVEYOR OR ALLPOINTS SERVICES CORP. IS NOT LIABLE FOR ANY DAMAGES THAT MAY INCUR IN ANY EVENT THE BUILDER BUILDS ANY IMPROVEMENTS CLOSER THAN 5.0' OR WITHIN AN EASEMENT.