



Notable Features + Amenities

This traditional French style home is a timeless classic! Foyer with curved staircase is flanked by formal living and dining rooms. Nicely appointed rooms with faux finished walls, rich hardwood floors, and crown moulding. Living room flows to a library with fireplace, built-in bookcases, and views to back patio/pool area. The large family room has an adjoining wetbar and access to outdoors. Spacious kitchen with stainless steel appliances and gas cooktop, and a butler's pantry passing through to dining room. Breakfast area in kitchen with large bay window. Primary suite on second floor with fireplace, luxurious bathroom, and two closets with Programme Martin storage systems. Four additional bedrooms on second floor with en-suite baths. Third floor flex room can be extra bedroom or game room. Carpet, paint, and hardwoods freshened up in 2022. Three-car garage with guest apartment. Lovely back yard with salt water pool and lush landscaping.

5/6 Bedrooms | 5 Full and 2 Half Baths | 3-Car Detached Garage
6,012 Sq. Ft. (Per HCAD) | 13,740 Lot Sq. Ft. (Per HCAD) | Built in 1994 (Per HCAD)
Garage Apartment - 1 Bedroom | 1 Full Bathroom | 888 Sq. Ft. (Per HCAD)

Foyer – 25' x 11'

- 11' Ceiling
- Solid wood double door entry with full-lite beveled glass transom
- Three arched and cased entryways; one to Formal Dining Room, one to Formal Living Room, and one to Family Room
- Elevator access to all three floors
- Curved staircase with hardwood treads and a hardwood balustrade
- Two single-candle brass wall sconces with fabric shades
- Two dual-candle brass wall sconces with fabric shades
- Recessed lighting
- 6" Multi-piece crown moulding
- 9" Multi-piece baseboards with quarter round
- 5" Oak floors

Formal Living Room – 18' x 15'

- 11' Ceiling
- Four sets of 3-lite stationary French double doors with 2-lite arched transoms and custom drapes
- Gas fireplace set in slab stone surround with slab stone hearth and cast stone mantel
- Sliding pocket door to Study
- Stencil painted walls
- Recessed lighting
- 6" Multi-piece crown moulding
- 9" Multi-piece baseboards with quarter round
- 5" Oak floors

Formal Dining Room – 18' x 15'

- 11' Ceiling
- Two sets of 3-lite stationary French double doors with 2-lite arched transoms and custom drapes
- 12-Candle iron chandelier
- Swinging door to Butler's Pantry
- Recessed lighting
- 6" Multi-piece crown moulding
- 9" Multi-piece baseboards with quarter round
- 5" Oak floors

Kitchen – 17' x 15'

- 11' Ceiling
- Two 3-lite windows with crank operation and custom drapes
- Granite countertops with 4" stone full backsplash
- Dual basin Kallista Fireclay sink with stainless steel faucet
- Stainless steel SubZero fridge and freezer combo
- Stainless steel Bosch dishwasher
- Stainless steel Thermador dual oven
- Stainless steel Thermador cooktop with five gas burners and built-in vent (on island)
- Faux painted finish on cabinetry
- Four overhead double door cabinets with dentil millwork
- Ten under-counter drawers
- Eight under-counter cabinets
- One under-counter trash bin drawer
- Island with granite countertop, cooktop, and ten under-counter drawers
- Chef's desk with wooden countertop, seven under-counter drawers, and under-counter knee space
- Walk-in pantry with built-in shelving and a keyed silver closet inside
- Concealed storage closet below staircase
- Recessed lighting

- 6" Multi-piece crown moulding
- 9" Multi-piece baseboards with quarter round
- 5" Oak floors

Butler's Pantry – 7' x 7'

- 11' Ceiling
- One 4-lite beveled glass window
- Granite countertops
- Faux painted finish on cabinetry
- Four overhead double door display cabinets with beveled glass fronts, adjustable glass shelving, and dentil millwork
- Thirteen undercounter drawers
- Two undercounter double door cabinets
- Recessed lighting
- 6" Multi-piece crown moulding
- 9" Multi-piece baseboards with quarter round
- 5" Oak floors

Breakfast Room – 16' x 15'

- 11' Ceiling
- Two 3-lite windows with crank operation
- Bay of five 3-lite windows; two are crank operation
- 6-Candle iron chandelier
- Serving counter from Kitchen with bead-board toe-kick and space for up to four stools
- Rear staircase with hardwood treads and new carpet stair-runner
- Recessed lighting
- 6" Multi-piece crown moulding
- 9" Multi-piece baseboards with quarter round
- 5" Oak floors

Family Room – 25' x 22'

- 11' Ceiling
- Two sets of stationary 3-lite French double doors with custom drapes
- Set of 3-lite French double doors
- Gas fireplace with cast stone mantel and hearth, and a cast stone over-mantel extending to the ceiling
- Two built-in double door cabinets with adjustable shelving overhead
- Stone serving counter from Wet Bar with slab stone toe-kick
- Directional art lighting
- Recessed lighting
- 6" Multi-piece crown moulding
- 9" Multi-piece baseboards with quarter round
- 5" Oak floors

Study – 16' x 16'

- 11' Ceiling
- Three 3-lite windows with custom drapes
- Two sets of 3-lite French double doors; one set is stationary with custom drapes
- Gas fireplace set in slab stone surround with slab stone hearth and millwork mantel
- Two arched bookcases; each with four adjustable shelves and a double door cabinet below
- Directional art lighting
- Recessed lighting
- 6" Multi-piece crown moulding
- 9" Multi-piece baseboards with quarter round
- 5" Oak floors

Wet Bar – 9' x 8'

- 11' Ceiling
- Slab stone countertop with leathered finish
- Under-mount sink with brass faucet
- SubZero ice maker
- Stainless steel wine mini-fridge
- Overhead diagonal box wine storage for 42 bottles
- Pantry with built-in shelving
- Five under-counter cabinets
- Five under-counter drawers
- 2-Bulb iron chandelier with glass shades
- Recessed lighting
- 6" Multi-piece crown moulding
- 9" Multi-piece baseboards with quarter round
- 5" Oak floors

Powder Room – 8' x 8'

- 8' 6" Ceiling
- Burl wood Bombay chest vanity with porcelain sink, nickel faucet, and built in drawers
- Two dual-candle iron wall sconces with fruit-shaped hanging glass ornaments
- Antique mirror with brass frame
- Faux painted finish on walls
- Recessed lighting
- 6" Multi-piece crown moulding
- 9" Multi-piece baseboards with quarter round
- 5" Oak floors

Primary Bedroom – 21' x 18'

- 12' Barrel vaulted ceiling with cove lighting
- Two 6-lite windows with plantation shutters and crank operation
- Gas fireplace with brick firebox, cast stone mantel and cast stone hearth
- Two brass wall sconces with fabric shades
- Double door closet with six wrap-around shelves
- Recessed lighting
- 6" Multi-piece crown moulding
- 9" Multi-piece baseboards
- New carpet floors

Primary Bathroom – 20' x 11'

- 12' Barrel vaulted ceiling
- One 6-lite window with arched transom and plantation shutters
- Brass chandelier with colored glass pendants and five candles
- Vanity 1 - Marble countertop and backsplash with porcelain sink, brass faucet, makeup knee space, thirteen under-counter drawers, and one under-counter single door cabinet
- Vanity 2 - Marble countertop and backsplash with porcelain sink, brass faucet, twelve under-counter drawers, and one under-counter double door cabinet
- Ceiling to counter mirror above each vanity; one mirror has two sets of four built-in mirrored shelves
- Soaking tub with marble tile surround, brass faucet, and decorative marble accent band
- Walk-in shower with marble tile surround, 6" tile floor, shampoo shelf cutout, brass faucet and shower head, seamless glass door, and bench seat
- Lavatory closet with one 3-lite window with plantation shutter, Kohler commode, and a brass toilet paper holder
- Two brass wall sconces with fabric shades
- Recessed lighting
- 9" Multi-piece baseboards with quarter round
- 5" Oak floors

Primary Closet 1 – 10' x 7'

- 10' Ceiling
- Two 2-lite windows with plantation shutters
- Programme Martin closet system with two built-in hanging rods with three adjustable rods each, four additional hanging rods, fourteen acrylic faced drawers, four adjustable shelves, and three adjustable drawers
- Five coat hooks
- Two fluorescent light fixtures
- 9" Multi-piece baseboards
- New carpet floors

Primary Closet 2 – 14' x 7'

- 10' Ceiling
- Three 2-lite windows with plantation shutters
- Two hanging rods with overhead shelving
- Programme Martin closet system with three adjustable hanging rods, six acrylic faced drawers, two additional adjustable hanging rods, five adjustable shelves, and seven acrylic faced drawers
- Two fluorescent light fixtures
- 9" Multi-piece baseboards
- New carpet floors

Bedroom 1 – 14' x 13'

- 12' Tray vaulted ceiling
- Two 3-lite windows with plantation shutters and crank operation
- Full length fashion mirror mounted on back of entry door
- Walk-in closet (5' x 4') with wrap around shelving and automatic lighting
- Two fluorescent light fixtures
- 9" Multi-piece baseboards with quarter round
- 5" Oak floors

Bedroom 1 Bathroom – 9' x 5'

- 10' Ceiling
- One 2-lite window with plantation shutters
- Vanity with 3" stone tile countertop and backsplash, built-in mirror, porcelain sink, and brushed nickel faucet
- Shower/tub combo with 6" tile surround with accent band (matching vanity countertop), and brushed nickel faucet/shower head
- One brushed nickel towel rack
- One brushed nickel hand towel ring
- Four under-counter drawers
- One under-counter single door cabinet
- Kohler commode
- Recessed lighting
- 6" Multi-piece crown moulding
- 9" Multi-piece baseboards with quarter round
- 2" Oak floors

Bedroom 2 – 14' x 14'

- 10' Ceiling
- Two 6-lite windows with plantation shutters and crank operation
- Walk-in closet with three hanging rods, three shelves (two wrap-around), and automatic lighting
- Built-in set of five book shelves
- Ceiling fan with built-in lighting
- 3' Beadboard wainscoting
- 6" Multi-piece crown moulding
- 9" Multi-piece baseboards
- New carpet floors

Bedroom 2 Vanity Area – 8' x 6'

- 10' Ceiling
- Vanity with engineered countertop and backsplash, porcelain sink, brass faucet, knee space, four under-counter drawers, and one under-counter single door cabinet
- Built-in dresser with one overhead double door cabinet and ten under-counter drawers
- One brass hand towel ring
- Medicine cabinet with three shelves
- Recessed lighting
- 6" Multi-piece crown moulding
- 9" Multi-piece baseboards
- New carpet floors

Bedroom 3 Vanity Area – 8' x 5'

- 10' Ceiling
- Vanity with engineered countertop and backsplash, porcelain sink, brass faucet, knee space, four under-counter drawers, and one under-counter single door cabinet
- Built-in dresser with one overhead double door cabinet and ten under-counter drawers
- One brass hand towel ring
- Medicine cabinet with three shelves
- Recessed lighting
- 6" Multi-piece crown moulding
- 9" Multi-piece baseboards
- New carpet floors

Jack & Jill Bath – 8' x 7'

- 10' Ceiling
- Two 3-lite windows with plantation shutters and crank operation
- Shower/tub combo with 6" tile surround, brass faucet and shower head, and soap shelf cutout
- Linen cabinet
- Laundry hamper
- One brass towel rack
- One brass toilet paper holder
- Kohler commode
- Recessed lighting
- 6" Multi-piece crown moulding
- 9" Multi-piece baseboards
- 3" Stone tile floors set diagonally

Bedroom 3 – 14' x 14'

- 10' Ceiling
- Two 6-lite windows with plantation shutters and crank operation
- Walk-in closet (7' x 4') with mirror mounted on the door, light fixture, two wall-to-wall shelves, three hanging rods, a built-in set of six shelves, and automatic lighting
- Ceiling fan with built in lighting
- 3' Beadboard wainscoting
- 6" Multi-piece crown moulding
- 8" Multi-piece baseboards
- New carpet floors

Bedroom 4 – 16' x 14'

- 12' Tray vaulted ceiling
- Four 3-lite windows with plantation shutters and crank operation
- Two built-in book shelves with two under-counter double door cabinets and four adjustable shelves each
- Walk-in closet (5' x 5') with three hanging rods (one dress height), two wall-to-wall shelves, built-in set of five shelves, wall-mounted mirror, two overhead shelves, and automatic lighting
- Decorative bronze with glass chandelier
- Two brass wall sconces with fabric shades
- 6" Multi-piece crown moulding
- 9" Multi-piece baseboards
- New carpet floors

Bedroom 4 Bathroom – 9' x 5'

- 10' Ceiling
- One 2-lite window with plantation shutters and crank operation
- Vanity with marble countertop and backsplash, porcelain sink with brass faucet, one under-counter double door cabinet, and four under-counter drawers
- Medicine cabinet with three shelves
- Shower/tub combo with 6" tile surround, stone tile accent band, brass faucet and shower head, and shampoo shelf cutout
- One brass toilet paper holder
- One brass hand towel ring
- Kohler commode
- Recessed lighting
- 6" Multi-piece crown moulding
- 9" Multi-piece baseboards with quarter round
- 2" Oak floors

Laundry Room – 11' x 10'

- 10' Ceiling
- Engineered countertops
- Porcelain utility sink with polished nickel faucet
- Space for full size washer and dryer
- One overhead single door cabinet
- One overhead double door cabinet
- Two overhead shelves
- One hanging rod
- Seven under-counter drawers
- Three under-counter double door cabinets
- Three under-counter single door cabinets
- Fluorescent light fixture
- 9" Multi-piece baseboards
- 8" Tile floors

3rd Floor Flex Room (Bedroom 5) – 30' x 16'

- 8' Ceiling
- Two 6-lite windows with arched plantation shutters, crank operation, and bench seat
- Built-in day bed with two storage drawers
- Office space with built-in desk (8' x 6') with keyboard tray, six under-counter drawers, and six adjustable shelves
- Closet (3' x 3') with two shelves, and one hanging rod
- Elevator access
- Ceiling fan with built-in lighting
- 9" Multi-piece baseboards
- New carpet floors

3rd Floor Bathroom – 9' x 5'

- 8' Ceiling
- Vanity with engineered countertop, backsplash, and sink, polished nickel faucet, and one under-counter double door cabinet
- Pewter framed mirror
- Shower/tub combo set in 6" tile surround, with sliding glass door and polished nickel faucet and shower head
- One polished nickel towel rack
- One polished nickel hand towel ring
- Kohler commode
- Recessed lighting
- 9" Multi-piece baseboards
- 8" Tile floors laid diagonally

Guest Apartment Living Room – 19' x 15'

- 8' Ceiling
- Two 6-lite arched windows with crank operation and bench seats
- Double-door storage closet
- Ceiling fan
- Fluorescent lighting
- 5" Baseboards with quarter round
- 2" Hardwood floors

Guest Apartment Kitchenette (Part of Living Room)

- Granite countertops with 4" stone tile full backsplash
- Dual basin stainless steel sink with stainless steel faucet
- GE dishwasher
- Magic Chef 4-burner electric range with oven
- Kenmore vent-hood
- Three overhead single door cabinets
- Two overhead double door cabinets
- One under-counter double door cabinet
- Four under-counter drawers

Guest Apartment Bedroom – 13' x 11'

- 8' Ceiling
- One 6-lite arched window with crank operation and bench seat
- Ceiling fan with built-in lighting
- Closet with three hanging rods and overhead shelving
- 5" Baseboards
- Carpet floors

5315 Longmont Drive

Guest Apartment Bathroom – 9' x 5'

- 8' Ceiling
- 2-Lite window with crank operation
- Granite countertop and backsplash
- Porcelain sink with polished nickel faucet
- One under-counter double door cabinet
- Tub/shower combo set in porcelain tile surround with sliding glass door
- Pendant light fixture with domed glass shade
- 5" Baseboards
- 8" Porcelain tile floors

Outdoor Kitchen

- Granite countertop
- Built-in stainless steel Dacor gas grill
- Built-in stainless steel Dacor 2 burner cooktop
- Three under-counter stainless steel drawers
- Stainless steel under-counter refrigerator

Pool Bathroom – 10' x 5'

- 8' Ceiling
- 2-Lite operational sliding window
- Porcelain pedestal sink with polished nickel faucet
- Built-in mirror over sink with glass and polished nickel shelf below
- Motion activated 2-candle wall sconce over mirror
- Polished nickel hand towel ring
- Polished nickel toilet paper holder
- American standard toilet
- 12" Fossil stone tile floor and baseboards

Miscellaneous Features

- Extra washer/dryer connections in garage
- Storage closet in garage
- All exterior light fixtures and fans recently replaced; circa 2022

Site Plan



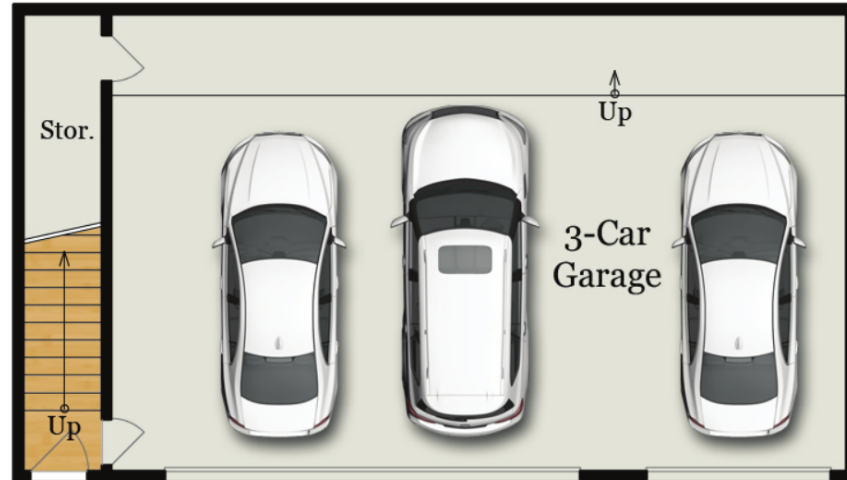


Floor Plan

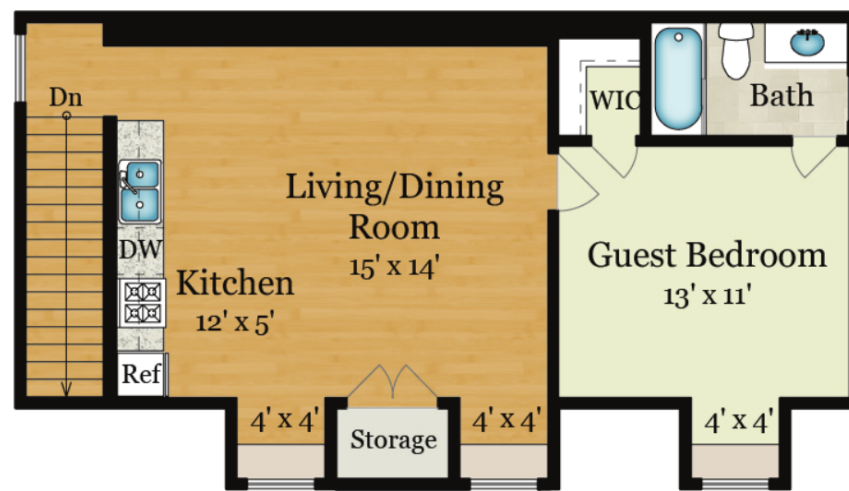




Garage & Garage Apartment Floor Plan



DETACHED GARAGE



GARAGE APARTMENT
(LOCATED ABOVE DETACHED GARAGE)



MAIN RESIDENCE
UPPER LEVEL 2