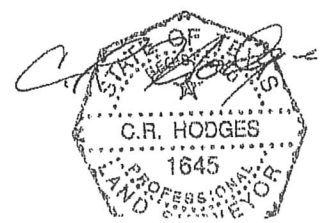
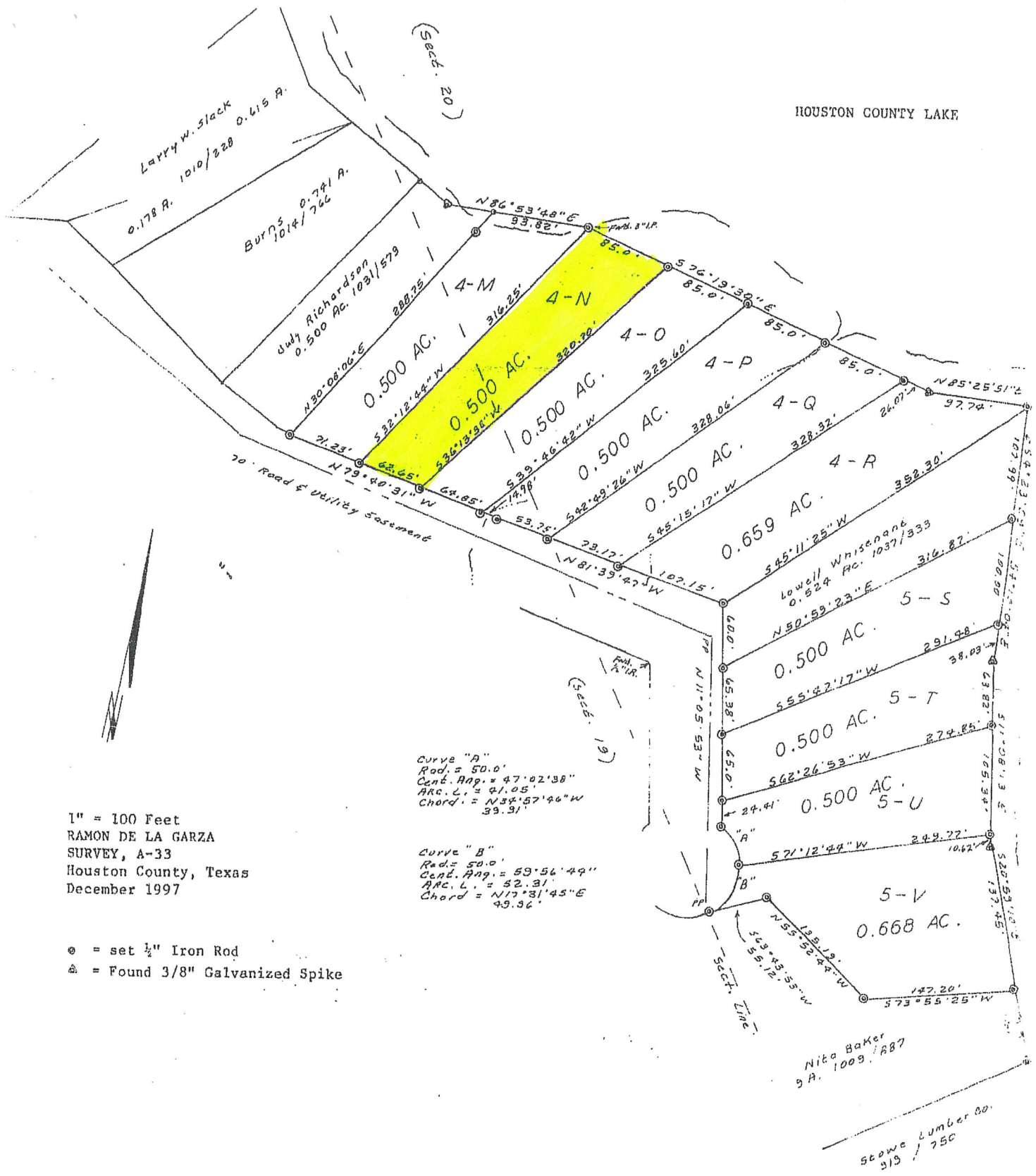


HOUSTON COUNTY LAKE



Field Notes for 0.500 Acre
RAMON DE LA GARZA SURVEY, A-33
Houston County, Texas

Tract 4-N,

0.500 acre out of and a part of the RAMON DE LA GARZA SURVEY, A-33 in Houston County, Texas and being out of and a part of an original 3.159 acres tract, described in a deed to C. Bert Dickens Co., L.C. from Champion Realty Corp., recorded in Vol. 1061, page 467 of the Official Records of Houston County, which 0.500 acre more particularly described by metas and bounds as follows:

BEGINNING on a $\frac{1}{2}$ inch iron rod set for the South West corner of this tract and the South East corner of Tract 4-M, also a 0.500 acre tract and being in a North line of a 70' Roadway and Utility Easement and also being S 79° 40' 31" E 71.23 feet from a $\frac{1}{2}$ inch iron rod found for the South East corner of Judy Richardson 0.500 acre tract, recorded in Vol. 1031, Page 579 and also being the South West corner of said original 3.159 acres tract;

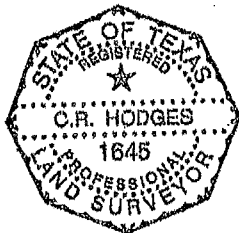
THENCE N 32° 12' 44" E 316.25 feet to a 3 inch iron pipe found for corner in the fee taking line of a South line of Houston County Lake, same being the North East corner of said Tract 4-N;

THENCE S 76° 19' 30" E 85.0 feet to a $\frac{1}{2}$ inch iron rod set for corner, same being the North West corner of Tract 4-O, also a 0.500 acre tract, and also being in the fee taking line of a South line of Houston County Lake;


THENCE S 36° 13' 38" W 320.70 feet to a $\frac{1}{2}$ inch iron rod set for corner, same being the South West corner of said Tract 4-O, also a 0.500 acre tract and being in a North line of a 70' Roadway and Utility Easement;

THENCE N 79° 40' 31" W 62.65 feet to the place of beginning and containing 0.500 acre of land more or less.

Field Notes Prepared December 1997.



I, C.R. Hodges, a Registered Professional Land Surveyor in the State of Texas, do hereby certify that the property covered by the above field notes thereon are true and correct and was surveyed on the ground by me or under my supervision.


Registered Professional Surveyor
No. 1645, Texas